

Fepic®



FABRIC DETAIL

TOP-GEORGETTE  
INNER-SANTOON  
BOTTOM-SANTOON  
DUPATTA-NET

**ROSEMEEN**  
premium

D.NO.34001



QR

**WASHING INSTRUCTIONS**

DO NOT USE ANY TYPE OF BLEACH OR STAIN REMOVING CHEMICALS  
BEFORE CUTTING / STITCHING , FABRIC SHOULD BE SOAKED BE SOAKED IN WATER  
( ALL COMPONENTS SEPARATELY ) FOR 15 MINUTES

DO NOT KEEP WET FABRIC IN TWISTED FROM IN ORDER TO AVOID COPY MARKS I  
WASH COLOURED AND WHITE FABRICS SEPARATELY

IRON CLOTHES AT MODERATE TEMPERATURE I DO NOT DRY FABRIC IN DIRECT SUNLIGHT  
( EXTRA LACES, HANGINGS AND ACCESSORIES ARE NOT INDUDED )



Fepic®



**WASHING INSTRUCTIONS**

DO NOT USE ANY TYPE OF BLEACH OR STAIN REMOVING CHEMICALS  
BEFORE CUTTING / STITCHING , FABRIC SHOULD BE SOAKED IN WATER  
( ALL COMPONENTS SEPARATELY ) FOR 15 MINUTES  
DO NOT KEEP WET FABRIC IN TWISTED FROM IN ORDER TO AVOID COPY MARKS |  
WASH COLOURED AND WHITE FABRICS SEPARATELY  
IRON CLOTHES AT MODERATE TEMPERATURE | DO NOT DRY FABRIC IN DIRECT SUNLIGHT  
( EXTRA LACES, HANGINGS AND ACCESSORIES ARE NOT INLUDED )

**Rosemeen®**  
MEENARA

D.NO.88004





FABRIC DETAI  
TOP-GEORGETTE  
INNER-SANTOON  
BOTTOM-SANTOON  
DUPATTA-NET



**ROSEMEEN**

PARADISE

D.NO.42002

QR

**WASHING INSTRUCTIONS**

DO NOT USE ANY TYPE OF BLEACH OR STAIN REMOVING CHEMICALS BEFORE CUTTING / STITCHING . FABRIC SHOULD BE SOAKED BE SOAKED IN WATER ( ALL COMPONENTS SEPARATELY ) FOR 15 MINUTES

DO NOT KEEP WET FABRIC IN TWISTED FROM IN ORDER TO AVOID COPY MARKS !  
WASH COLOURED AND WHITE FABRICS SEPARATELY  
IRON CLOTHES AT MODERATE TEMPERATURE | DO NOT DRY FABRIC IN DIRECT SUNLIGHT



Fepic®



D.NO.83003 I

ROSEWOOD  
ROSEWOOD

**WASHING INSTRUCTIONS**

DO NOT USE ANY TYPE OF BLEACH OR STAIN REMOVING CHEMICALS  
 BEFORE CUTTING / STITCHING , FABRIC SHOULD BE SOAKED IN WATER  
 ( ALL COMPONENTS SEPARATELY ) FOR 15 MINUTES  
 DO NOT KEEP WET FABRIC IN TWISTED FROM IN ORDER TO AVOID COPY MARKS !  
 WASH COLOURED AND WHITE FABRICS SEPARATELY  
 IRON CLOTHES AT MODERATE TEMPERATURE ! DO NOT DRY FABRIC IN DIRECT SUNLIGHT  
 ( EXTRA LACES, HANGINGS AND ACCESSORIES ARE NOT INLUDED )

**FABRIC DETAIL**

TOP-GEORGTTE  
 BOTTOM-RACHEL NET JACQUARD  
 ( WITH SANTOON INNER )  
 DUPATTA-NET EMBROIDERED  
 INNER-SANTOON



QR



**Fepic**<sup>®</sup>

D.NO.83003 H

**ROSEWOOD**  
ROSEWOOD

**WASHING INSTRUCTIONS**

DO NOT USE ANY TYPE OF BLEACH OR STAIN REMOVING CHEMICALS  
 BEFORE CUTTING / STITCHING , FABRIC SHOULD BE SOAKED IN WATER  
 ( ALL COMPONENTS SEPARATELY ) FOR 15 MINUTES  
 DO NOT KEEP WET FABRIC IN TWISTED FROM IN ORDER TO AVOID COPY MARKS !  
 WASH COLOURED AND WHITE FABRICS SEPARATELY  
 IRON CLOTHES AT MODERATE TEMPERATURE ! DO NOT DRY FABRIC IN DIRECT SUNLIGHT  
 ( EXTRA LACES, HANGINGS AND ACCESSORIES ARE NOT INLUDED )

**FABRIC DETAIL**

TOP-GEORGTTE  
 BOTTOM-RACHEL NET JACQUARD  
 ( WITH SANTOON INNER )  
 DUPATTA-NET EMBROIDERED  
 INNER-SANTOON



QR



**Epic**<sup>®</sup>



**D.NO**  
**58006**





**Epic**®

**D.NO**  
**58002**



**ROSEMEEN**  
**RIONA**

**QR**  
**WASHING INSTRUCTIONS**

**FABRIC DETAI**  
TOP-NET  
INNER-SANTOON  
BOTTOM-SANTOON  
DUPATTA-NET

DO NOT USE ANY TYPE OF BLEACH OR STAIN REMOVING CHEMICALS  
BEFORE CUTTING / STITCHING , FABRIC SHOULD BE SOAKED IN WATER  
( ALL COMPONENTS SEPARATELY ) FOR 15 MINUTES  
DO NOT KEEP WET FABRIC IN TWISTED FROM IN ORDER TO AVOID COPY MARKS |  
WASH COLOURED AND WHITE FABRICS SEPARATELY  
IRON CLOTHES AT MODERATE TEMPERATURE | DO NOT DRY FABRIC IN DIRECT SUNLIGHT



**D.NO**  
**58001**



**ROSEMEEN**  
**RIONA**

**QR**

**WASHING INSTRUCTIONS**

DO NOT USE ANY TYPE OF BLEACH OR STAIN REMOVING CHEMICALS BEFORE CUTTING / STITCHING. FABRIC SHOULD BE SOAKED IN WATER ( ALL COMPONENTS SEPARATELY ) FOR 15 MINUTES  
DO NOT KEEP WET FABRIC IN TWISTED FROM IN ORDER TO AVOID COPY MARKS | WASH COLOURED AND WHITE FABRICS SEPARATELY  
IRON CLOTHES AT MODERATE TEMPERATURE | DO NOT DRY FABRIC IN DIRECT SUNLIGHT

**FABRIC DETAI**

TOP-GEORGETTE  
INNER-SANTOON  
BOTTOM-SANTOON  
DUPATTA-NAZMEEN





D.NO.C 3111 B



**WASHING INSTRUCTIONS**

DO NOT USE ANY TYPE OF BLEACH OR STAIN REMOVING CHEMICALS  
 BEFORE CUTTING / STITCHING , FABRIC SHOULD BE SOAKED IN WATER  
 ( ALL COMPONENTS SEPARATELY ) FOR 15 MINUTES  
 DO NOT KEEP WET FABRIC IN TWISTED FROM IN ORDER TO AVOID COPY MARKS !  
 WASH COLOURED AND WHITE FABRICS SEPARATELY  
 IRON CLOTHES AT MODERATE TEMPERATURE | DO NOT DRY FABRIC IN DIRECT SUNLIGHT

**FABRIC DETAIL**  
 TOP:- GEORGETTE WITH MIRROR WORK  
 DUPATTA:- NET WITH MIRROR WORK  
 BOTTOM :- SANTOON  
 INNER:- SANTOON

**Rosemeen**  
 RANG



QR

Fepic®



### FABRIC DETAIL

TOP-GEORGETTE  
INNER-SANTOON  
BOTTOM-SANTOON  
DUPATTA-NET

**ROSEMEEN**  
premium



QR

### WASHING INSTRUCTIONS

DO NOT USE ANY TYPE OF BLEACH OR STAIN REMOVING CHEMICALS  
BEFORE CUTTING / STITCHING , FABRIC SHOULD BE SOAKED BE SOAKED IN WATER  
( ALL COMPONENTS SEPARATELY ) FOR 15 MINUTES

DO NOT KEEP WET FABRIC IN TWISTED FROM IN ORDER TO AVOID COPY MARKS I  
WASH COLOURED AND WHITE FABRICS SEPARATELY

IRON CLOTHES AT MODERATE TEMPERATURE I DO NOT DRY FABRIC IN DIRECT SUNLIGHT  
( EXTRA LACES, HANGINGS AND ACCESSORIES ARE NOT INDUDED )

D.NO.34003

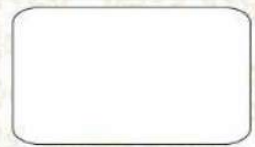


Fepic®



**FABRIC DETAIL**  
TOP-GEORGETTE  
INNER-SANTOON  
BOTTOM-SANTOON  
DUPATTA-NET

**ROSEMEEN**  
premium



QR



**WASHING INSTRUCTIONS**

DO NOT USE ANY TYPE OF BLEACH OR STAIN REMOVING CHEMICALS  
BEFORE CUTTING / STITCHING , FABRIC SHOULD BE SOAKED BE SOAKED IN WATER  
( ALL COMPONENTS SEPARATELY ) FOR 15 MINUTES  
DO NOT KEEP WET FABRIC IN TWISTED FROM IN ORDER TO AVOID COPY MARKS I  
WASH COLOURED AND WHITE FABRICS SEPARATELY  
IRON CLOTHES AT MODERATE TEMPERATURE I DO NOT DRY FABRIC IN DIRECT SUNLIGHT  
( EXTRA LACES, HANGINGS AND ACCESSORIES ARE NOT INDUDED )

D.NO.34001





QR

**ROSEMEEN**

PEARLS

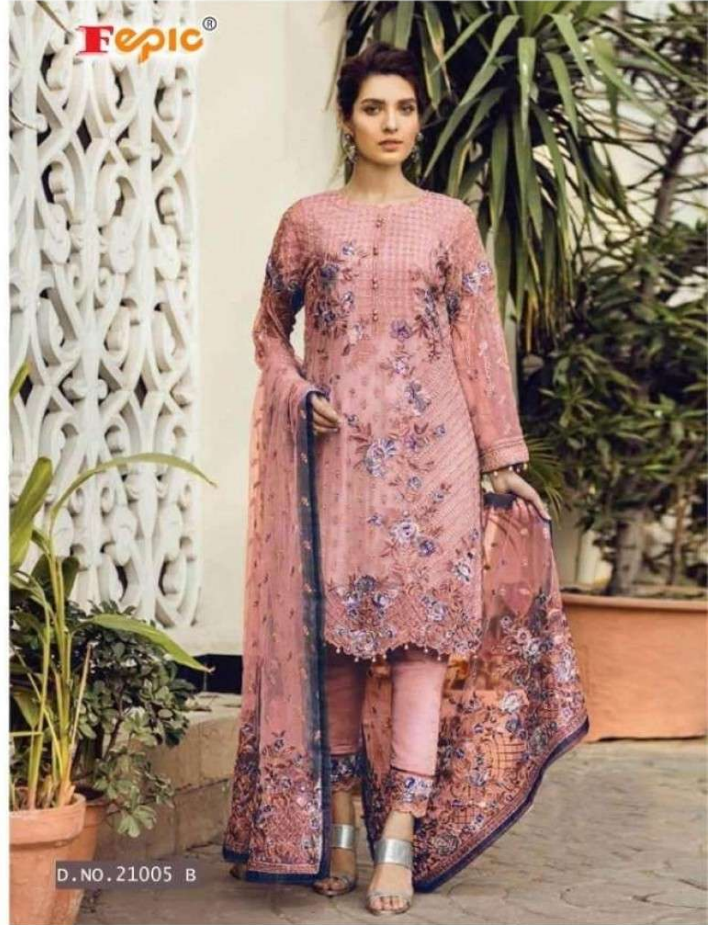
**WASHING INSTRUCTIONS**

DO NOT USE ANY TYPE OF BLEACH OR STAIN REMOVING CHEMICALS  
BEFORE CUTTING / STITCHING , FABRIC SHOULD BE SOAKED IN WATER  
( ALL COMPONENTS SEPARATELY ) FOR 15 MINUTES  
DO NOT KEEP WET FABRIC IN TWISTED FROM IN ORDER TO AVOID COPY MARKS |  
WASH COLOURED AND WHITE FABRICS SEPARATELY  
IRON CLOTHES AT MODERATE TEMPERATURE | DO NOT DRY FABRIC IN DIRECT SUNLIGHT

**FABRIC DETAIL**

TOP-GEORGETTE  
INNER-SANTOON  
BOTTOM-SANTOON  
DUPATTA-NAZMEEN

D.NO.21006



**ROSEMEEN**

PEARLS

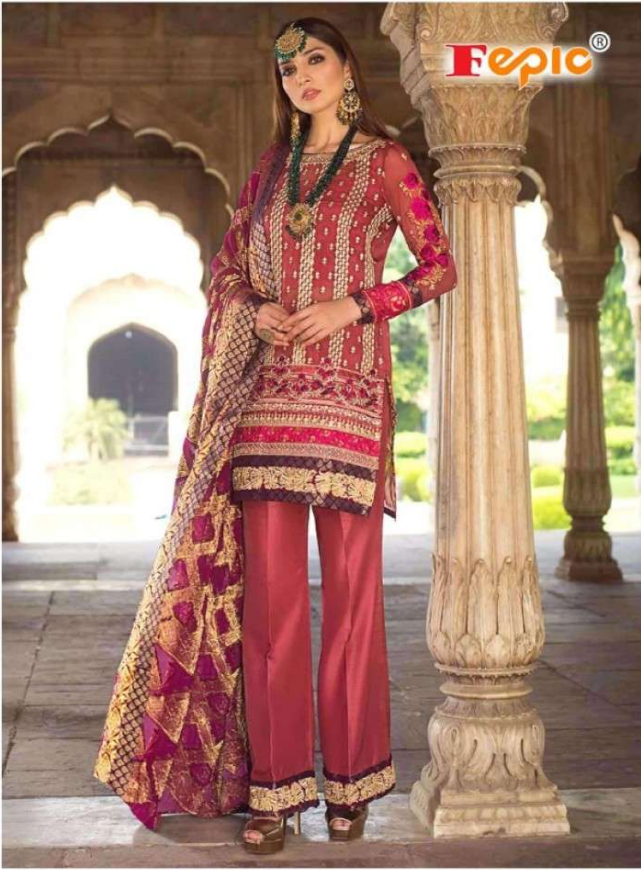
QR

**WASHING INSTRUCTIONS**

DO NOT USE ANY TYPE OF BLEACH OR STAIN REMOVING CHEMICALS BEFORE CUTTING / STITCHING. FABRIC SHOULD BE SOAKED IN WATER ( ALL COMPONENTS SEPARATELY ) FOR 15 MINUTES  
DO NOT KEEP WET FABRIC IN TWISTED FROM IN ORDER TO AVOID COPY MARKS |  
WASH COLOURED AND WHITE FABRICS SEPARATELY  
IRON CLOTHES AT MODERATE TEMPERATURE | DO NOT DRY FABRIC IN DIRECT SUNLIGHT

FABRIC DETAI  
TOP-GEORGETTE  
INNER-SANTOON  
BOTTOM-SANTOON  
DUPATTA-NET

D.No.21005 B



**ROSEMEEN**  
ZC'19



QR

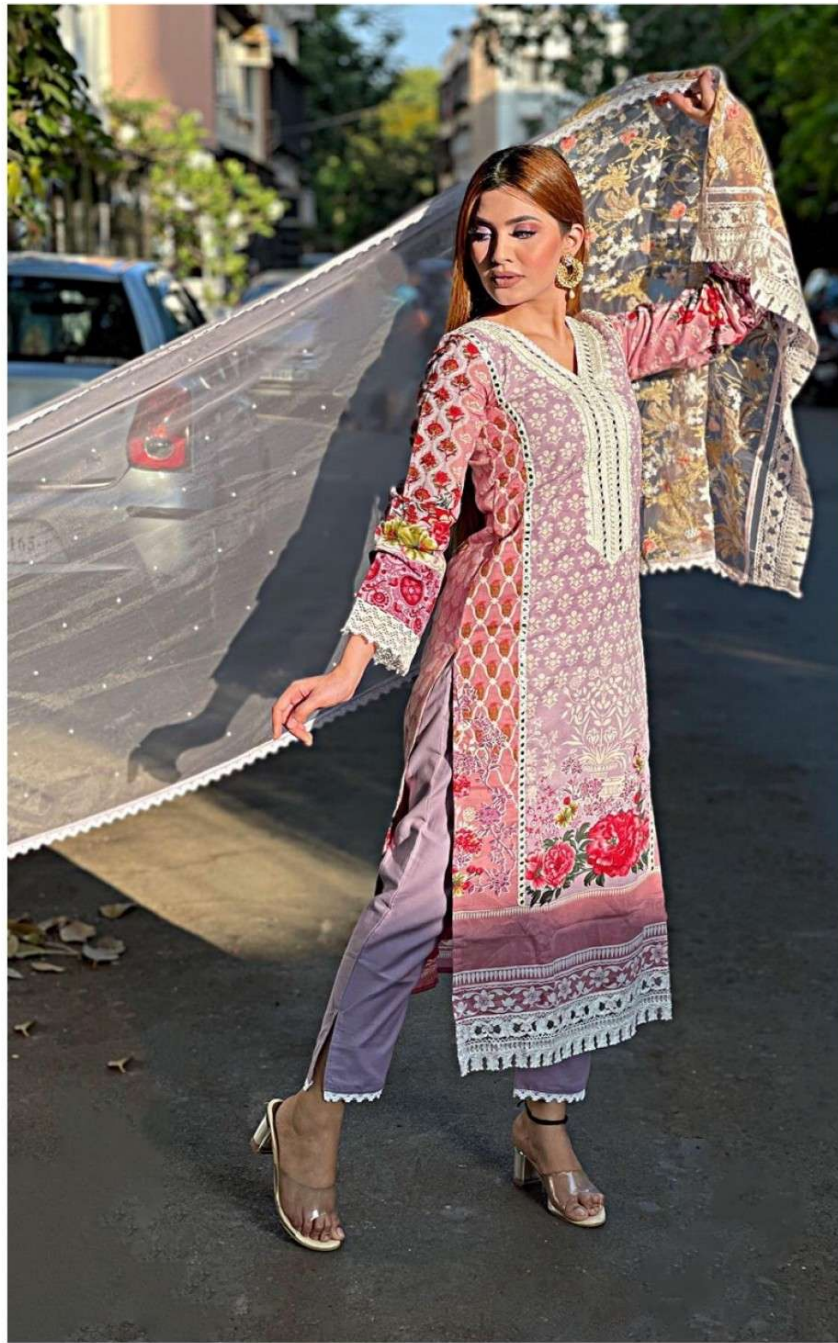


**WASHING INSTRUCTIONS**

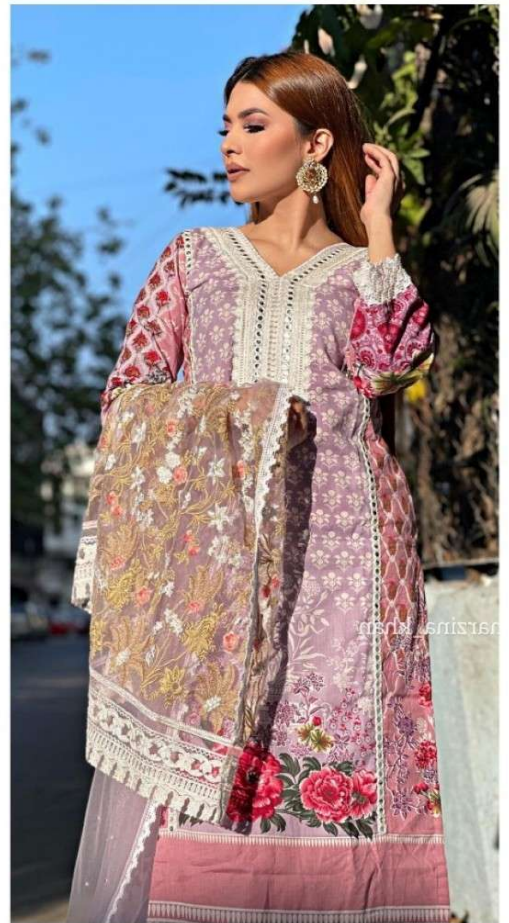
DO NOT USE ANY TYPE OF BLEACH OR STAIN REMOVING CHEMICALS BEFORE CUTTING / STITCHING. FABRIC SHOULD BE SOAKED IN WATER ( ALL COMPONENTS SEPARATELY ) FOR 15 MINUTES  
DO NOT KEEP WET FABRIC IN TWISTED FROM IN ORDER TO AVOID COPY MARKS |  
WASH COLOURED AND WHITE FABRICS SEPARATELY  
IRON CLOTHES AT MODERATE TEMPERATURE | DO NOT DRY FABRIC IN DIRECT SUNLIGHT  
( EXTRA LACES, HANGINGS AND ACCESSORIES ARE NOT INCLUDED )

**FABRIC DERAELS**

TOP -GEORGETTE  
DUPATTA-JACQUARD  
BOTTOM-SANTOON  
INNER-SANTOON



**Epic®**



• D.NO.86005 •

**WASHING INTRUCTIONS**

DO NOT USE ANY TYPE OF BLEACH OR STAIN REMOVING CHEMICALS  
 BEFORE CUTTING / STITCHING, FABRIC SHOULD BE SOAKED IN WATER  
 ( ALL COMPONENTS SEPARATELY ) FOR 15 MINUTES  
 DO NOT KEEP WET FABRIC IN TWISTED FROM IN ORDER TO AVOID COPY MARKS |  
 WASH COLOURED AND WHITE FABRICS SEPARATELY  
 IRON CLOTHES AT MODERATE TEMPERATURE | DO NOT DRY FABRIC IN DIRECT SUNLIGHT  
 ( EXTRA LACES, HANGINGS AND ACCESSORIES ARE NOT INDDUED )

**Rosemeen®**

**SOBIA NAZIR**  
 LAWN COLLECTION



**WASHING INSTRUCTIONS**

DO NOT USE ANY TYPE OF BLEACH OR STAIN REMOVING CHEMICALS  
BEFORE CUTTING / STITCHING , FABRIC SHOULD BE SOAKED BE SOAKED IN WATER  
( ALL COMPONENTS SEPARATELY ) FOR 15 MINUTES  
DO NOT KEEP WET FABRIC IN TWISTED FROM IN ORDER TO AVOID COPY MARKS |  
WASH COLOURED AND WHITE FABRICS SEPARATELY  
IRON CLOTHES AT MODERATE TEMPERATURE | DO NOT DRY FABRIC IN DIRECT SUNLIGHT  
( EXTRA LACES, HANGINGS AND ACCESSORIES ARE NOT INDUDED )

**SOBIA NAZIR**  
LAWN COLLECTION

• D.NO.86003 •





**Eepic**<sup>®</sup>



**WASHING INSTRUCTIONS**

DO NOT USE ANY TYPE OF BLEACH OR STAIN REMOVING CHEMICALS  
BEFORE CUTTING / STITCHING . FABRIC SHOULD BE SOAKED IN WATER  
( ALL COMPONENTS SEPARATELY ) FOR 15 MINUTES

DO NOT KEEP WET FABRIC IN TWISTED FORM IN ORDER TO AVOID COPY MARKS |

WASH COLOURED AND WHITE FABRICS SEPARATELY

IRON CLOTHES AT MODERATE TEMPERATURE | DO NOT DRY FABRIC IN DIRECT SUNLIGHT  
( EXTRA LACES, HANGINGS AND ACCESSORIES ARE NOT INCLUDED )

**FABRIC DETAIL**

TOP- GEORGETT  
BOTTOM- SANTOON  
INNER- SANTOON  
DUPATTA- SANTOON

**D.NO.452 E**



QR

**Fepic**<sup>®</sup>



### FABRIC DETAIL

TOP-NET  
INNER-SANTOON  
BOTTOM-SANTOON  
DUPATTA-NET

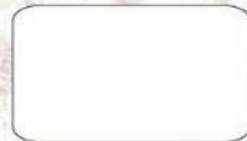
#### WASHING INSTRUCTIONS

DO NOT USE ANY TYPE OF BLEACH OR STAIN REMOVING CHEMICALS  
BEFORE CUTTING / STITCHING , FABRIC SHOULD BE SOAKED BE SOAKED IN WATER  
( ALL COMPONENTS SEPARATELY ) FOR 15 MINUTES

DO NOT KEEP WET FABRIC IN TWISTED FROM IN ORDER TO AVOID COPY MARKS !  
WASH COLOURED AND WHITE FABRICS SEPARATELY  
IRON CLOTHES AT MODERATE TEMPERATURE ! DO NOT DRY FABRIC IN DIRECT SUNLIGHT  
( EXTRA LACES, HANGINGS AND ACCESSORIES ARE NOT INLUDED )

**ROSEMEEN**  
ZC

**D.NO.32002**



QR

**Fepic**<sup>®</sup>



### FABRIC DETAIL

TOP-NET  
INNER-SANTOON  
BOTTOM-SANTOON  
DUPATTA-JAQUARD

#### WASHING INSTRUCTIONS

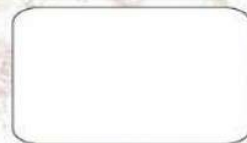
DO NOT USE ANY TYPE OF BLEACH OR STAIN REMOVING CHEMICALS  
BEFORE CUTTING / STITCHING , FABRIC SHOULD BE SOAKED BE SOAKED IN WATER  
( ALL COMPONENTS SEPARATELY ) FOR 15 MINUTES

DO NOT KEEP WET FABRIC IN TWISTED FROM IN ORDER TO AVOID COPY MARKS !  
WASH COLOURED AND WHITE FABRICS SEPARATELY

IRON CLOTHES AT MODERATE TEMPERATURE ! DO NOT DRY FABRIC IN DIRECT SUNLIGHT  
( EXTRA LACES, HANGINGS AND ACCESSORIES ARE NOT INLUDED )

**ROSEMEEN**  
ZC

**D.NO.32001**



QR

**Fepic**®



QR

**C-1028 E**

**FABRIC DETAILS**

TOP- GEORGETTE  
BOTTOM- SANTOON  
INNER- SANTOON  
DUPATTA- NAZMEEN

**WASHING INSTRUCTIONS**

DO NOT USE ANY TYPE OF BLEACH OR STAIN REMOVING CHEMICALS  
BEFORE CUTTING / STITCHING , FABRIC SHOULD BE SOAKED IN WATER  
( ALL COMPONENTS SEPARATELY ) FOR 15 MINUTES  
DO NOT KEEP WET FABRIC IN TWISTED FROM IN ORDER TO AVOID COPY MARKS |  
WASH COLOURED AND WHITE FABRICS SEPARATELY  
IRON CLOTHES AT MODERATE TEMPERATURE | DO NOT DRY FABRIC IN DIRECT SUNLIGHT

**Fepic**<sup>®</sup>



QR

**C-1028 D**

**FABRIC DETAILS**

TOP- GEORGETTE  
BOTTOM- SANTOON  
INNER- SANTOON  
DUPATTA- NAZMEEN

**WASHING INSTRUCTIONS**

DO NOT USE ANY TYPE OF BLEACH OR STAIN REMOVING CHEMICALS  
BEFORE CUTTING / STITCHING , FABRIC SHOULD BE SOAKED IN WATER  
( ALL COMPONENTS SEPARATELY ) FOR 15 MINUTES  
DO NOT KEEP WET FABRIC IN TWISTED FROM IN ORDER TO AVOID COPY MARKS |  
WASH COLOURED AND WHITE FABRICS SEPARATELY  
IRON CLOTHES AT MODERATE TEMPERATURE | DO NOT DRY FABRIC IN DIRECT SUNLIGHT

**Fepic**<sup>®</sup>



QR

**C-1028 A**

**FABRIC DETAILS**

TOP- GEORGETTE  
BOTTOM- SANTOON  
INNER- SANTOON  
DUPATTA- NAZMEEN

**WASHING INSTRUCTIONS**

DO NOT USE ANY TYPE OF BLEACH OR STAIN REMOVING CHEMICALS  
BEFORE CUTTING / STITCHING , FABRIC SHOULD BE SOAKED BE SOAKED IN WATER  
( ALL COMPONENTS SEPARATELY ) FOR 15 MINUTES

DO NOT KEEP WET FABRIC IN TWISTED FROM IN ORDER TO AVOID COPY MARKS |  
WASH COLOURED AND WHITE FABRICS SEPARATELY

IRON CLOTHES AT MODERATE TEMPERATURE | DO NOT DRY FABRIC IN DIRECT SUNLIGHT

**Fepic**<sup>®</sup>



D.NO.0054 D



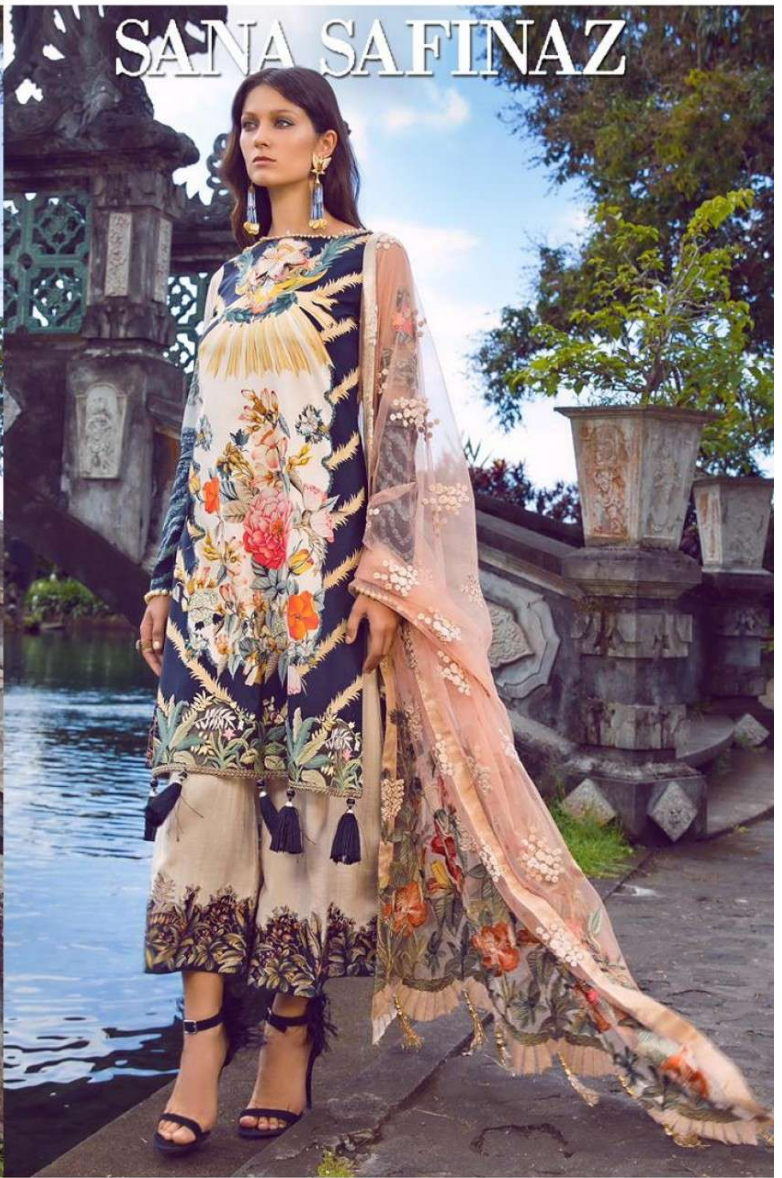
QR

**FABRIC DETAIL**

TOP-NET  
BOTTOM-SANTOON  
INNER-SANTOON  
DUPATTA-NET

**WASHING INSTRUCTIONS**

DO NOT USE ANY TYPE OF BLEACH OR STAIN REMOVING CHEMICALS  
BEFORE CUTTING / STITCHING , FABRIC SHOULD BE SOAKED IN WATER  
( ALL COMPONENTS SEPARATELY ) FOR 15 MINUTES  
DO NOT KEEP WET FABRIC IN TWISTED FORM IN ORDER TO AVOID COPY MARKS |  
WASH COLOURED AND WHITE FABRICS SEPARATELY  
IRON CLOTHES AT MODERATE TEMPERATURE | DO NOT DRY FABRIC IN DIRECT SUNLIGHT  
( EXTRA LACES, HANGINGS AND ACCESSORIES ARE NOT INCLUDED )



**Feepic®**

**SANA SAFINAZ**

**WASHING INSTRUCTIONS**

DO NOT USE ANY TYPE OF BLEACH OR STAIN REMOVING CHEMICALS  
BEFORE CUTTING / STITCHING , FABRIC SHOULD BE SOAKED IN WATER  
( ALL COMPONENTS SEPARATELY ) FOR 15 MINUTES  
DO NOT KEEP WET FABRIC IN TWISTED FROM IN ORDER TO AVOID COPY MARKS |  
WASH COLOURED AND WHITE FABRICS SEPARATELY  
IRON CLOTHES AT MODERATE TEMPERATURE | DO NOT DRY FABRIC IN DIRECT SUNLIGHT  
( EXTRA LACES, HANGINGS AND ACCESSORIES ARE NOT INLUDED )

**SANA SAFINAZ**

*WildFLOWER*

**D.NO.43010**





1. Item: rosemeen 88004	Fabric: georget	Rate 1395/pc
2. Item: Rosemeen 42002	Fabric: Georgette	Rate 1299/pc
3. Item: Rosemeen 21005 B	Fabric: Georgette	Rate 1249/pc
4. Item: Rosemeen 21006	Fabric: Georgette	Rate 1249/pc
5. Item: Rosemeen 34001	Fabric: Georgette	Rate 1299/pc
6. Item: Rosemeen 34003	Fabric: Georgette	Rate 1299/pc
7. Item: Rosemeen C 3111 B	Fabric: Georgette	Rate 1359/pc
8. Item: Rosemeen 58001	Fabric: Georgette, santoon,net	Rate 1359/pc
9. Item: Rosemeen 58002	Fabric: Georgette, santoon,net	Rate 1359/pc
10. Item: Rosemeen 58006	Fabric: Georgette, santoon,net	Rate 1359/pc
11. Item: Rosemeen 83003 H	Fabric: Georgette	Rate 1538/pc
12. Item: Rosemeen 83003 I	Fabric: Georgette	Rate 1538/pc
13. Item: rosemeen 43010	Fabric: cambric cotton	Rate 1049/pc
14. Item: Rosemeen 0054 D	Fabric: Net	Rate 1359/pc
15. Item: Rosemeen C 1028 A mustard	Fabric: Georgette	Rate 1299/pc
16. Item: Rosemeen C 1028 D	Fabric: Georgette	Rate 1299/pc
17. Item: Rosemeen C 1028 E	Fabric: Georgette	Rate 1299/pc
18. Item: Rosemeen 32001	Fabric: Georgette	Rate 1299/pc
19. Item: Rosemeen 32002	Fabric: Georgette	Rate 1299/pc
20. Item: SANOVER 452 E	Fabric: Georgette	Rate 1299/pc
21. Item: ROSEMEEN 86003	Fabric: cambric cotton	Rate 1149/pc
22. Item: ROSEMEEN 86005	Fabric: cambric cotton	Rate 1139/pc
23. Item: rosemeen 62004	Fabric: Georgette	Rate 1449/pc