



K - 48001



K - 48002



K - 48003



K - 48007



K - 48008



K - 48009



K - 48004



K - 48005



K - 48006

SHAN-E-IBADAT



KALKI

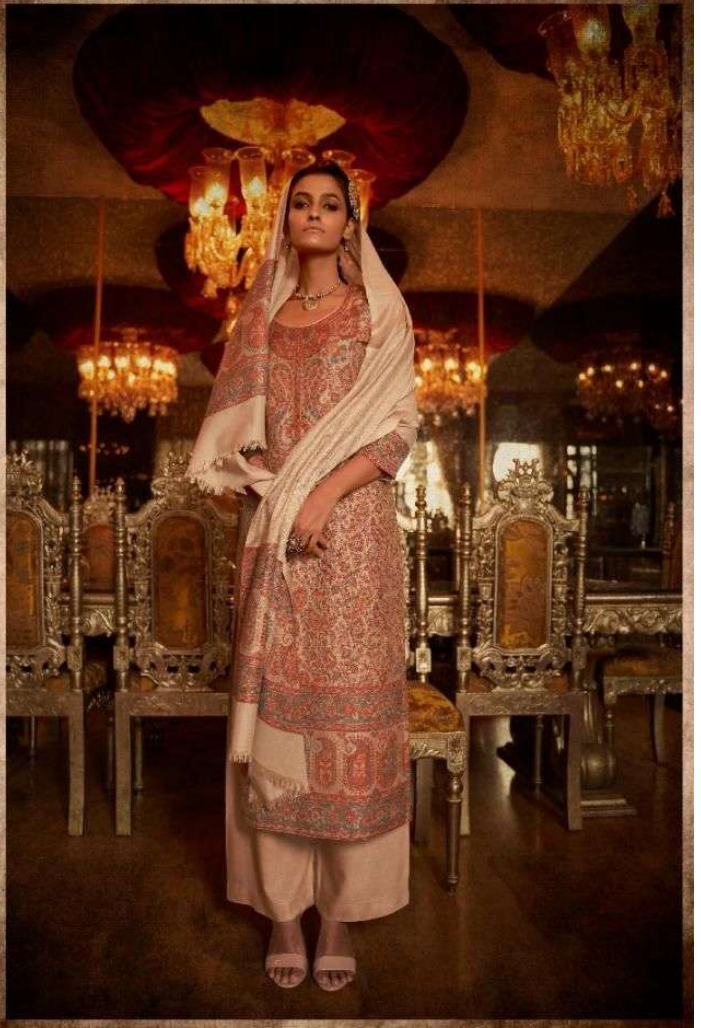
DESIGNER & MARK

SHAN-E-MEHFIL



KALKI

K - 48002

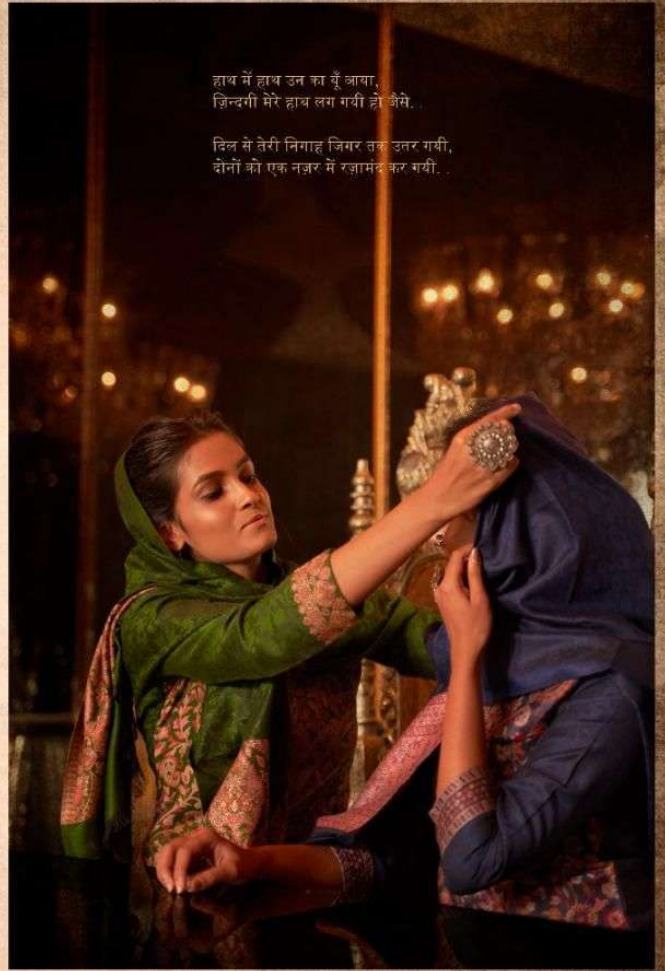


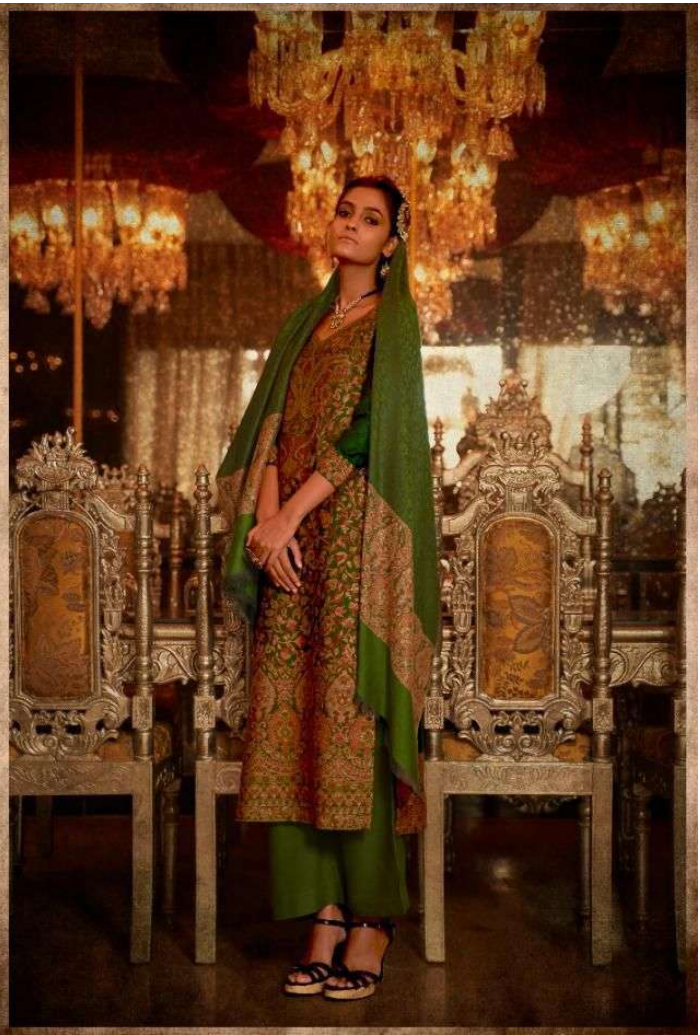
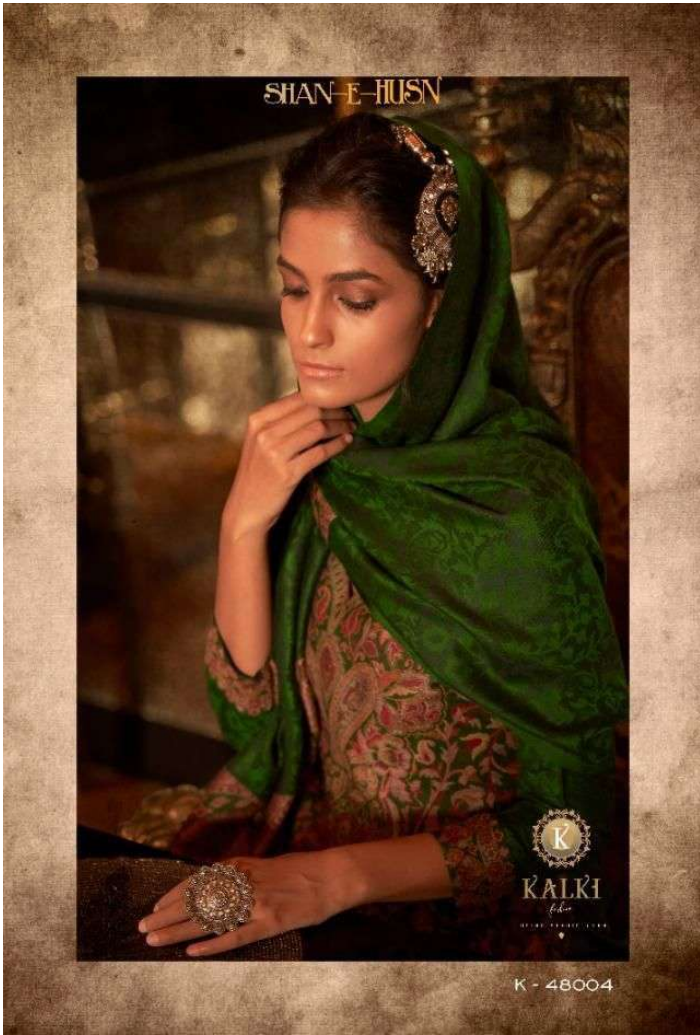
SHAN-E-IBADAT

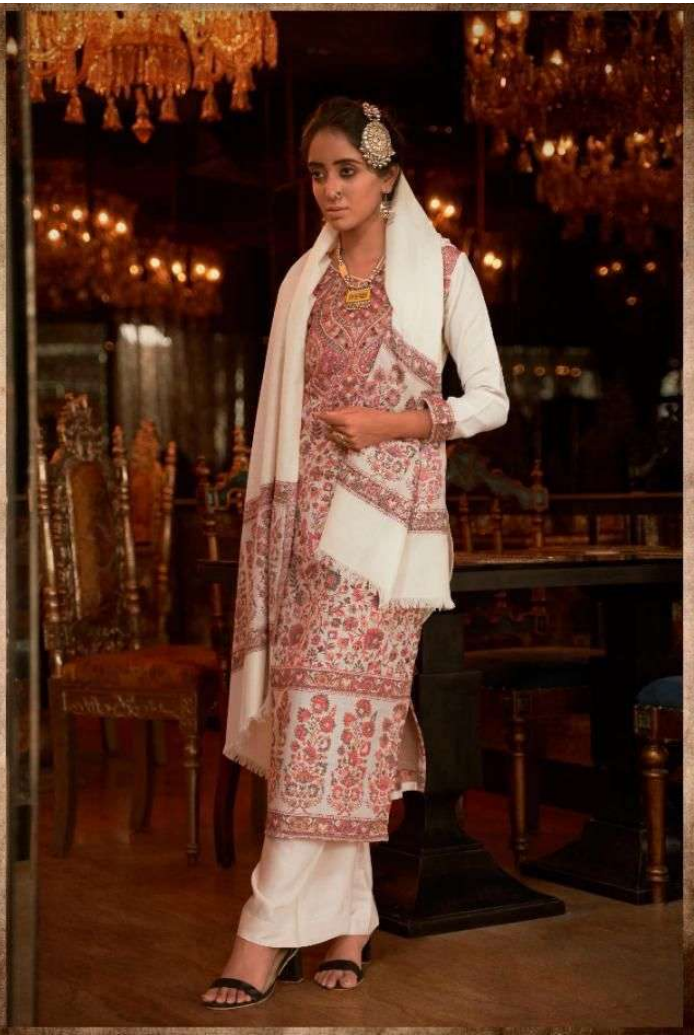


हाथ में हाथ उन का घूँ आया,
ज़िन्दगी मेरे हाथ लग गयी हो जैसे .

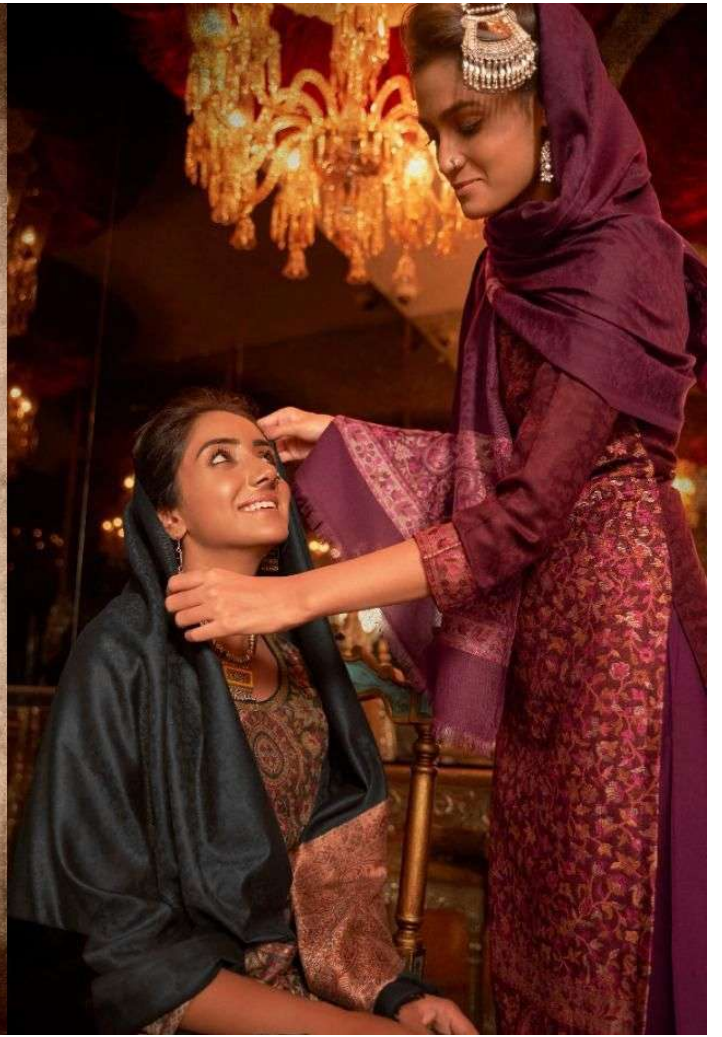
दिल से तेरी निगाह ज़िगर तक उतर गयी,
दोनों को एक नज़र में रज़ामंद कर गयी .

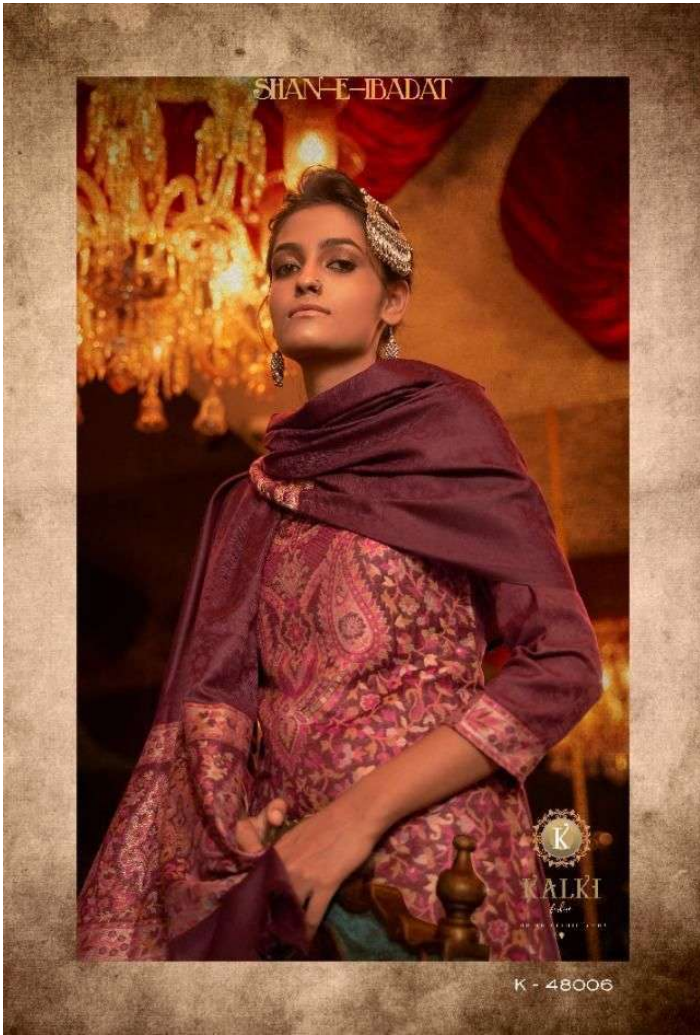


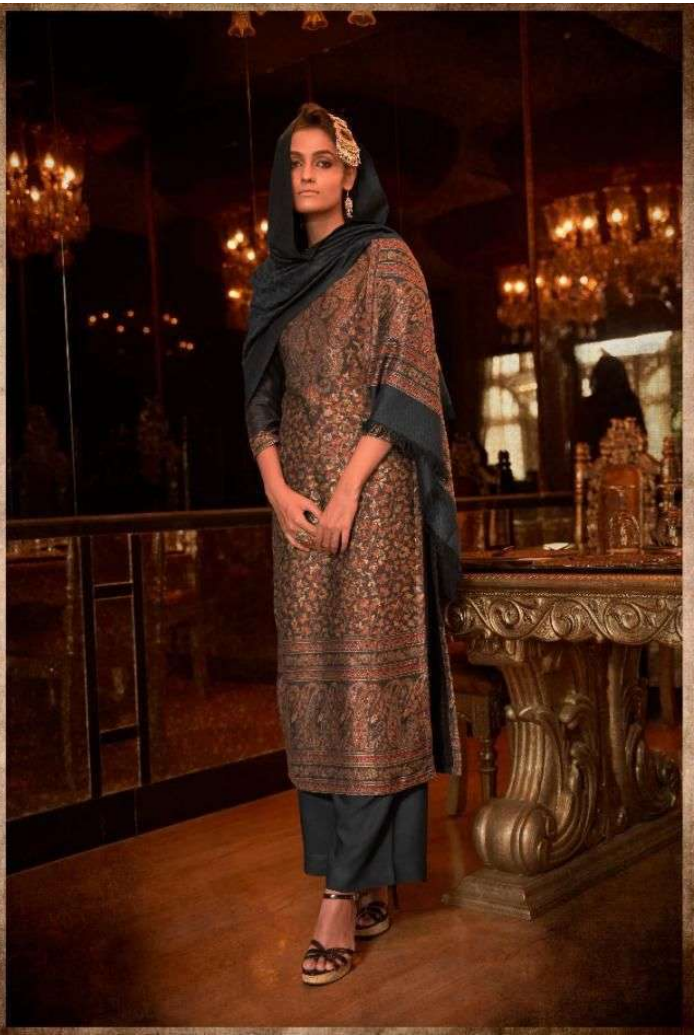
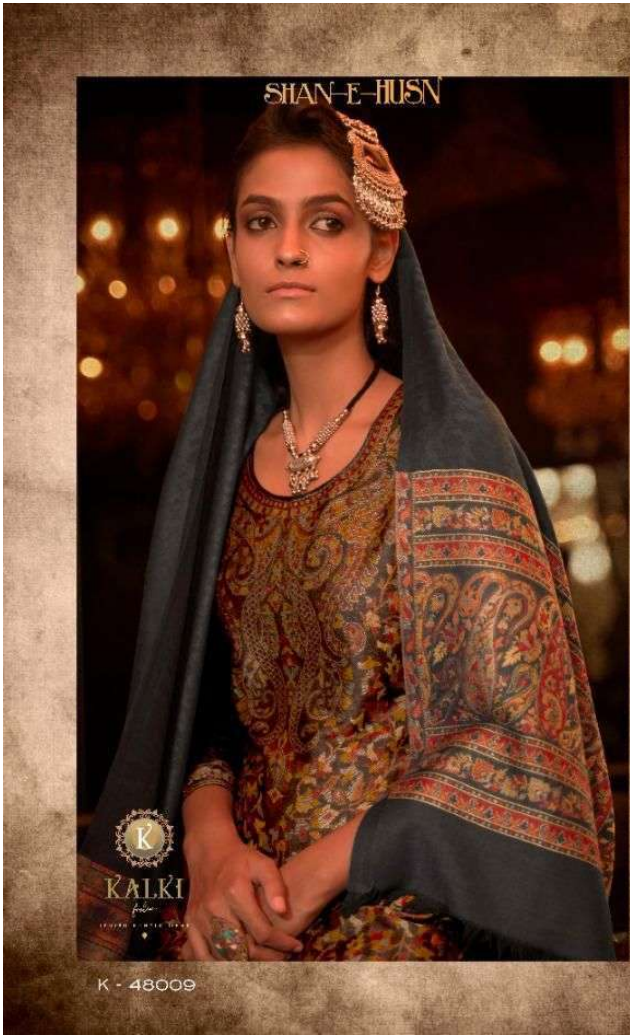


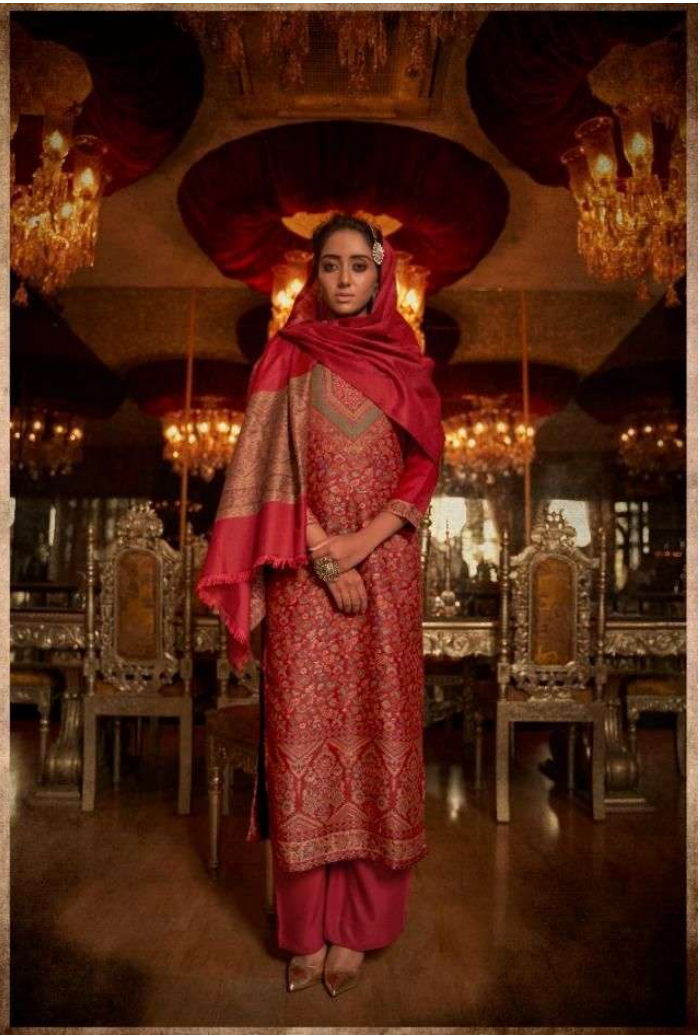


SHAN-E-IBADAT







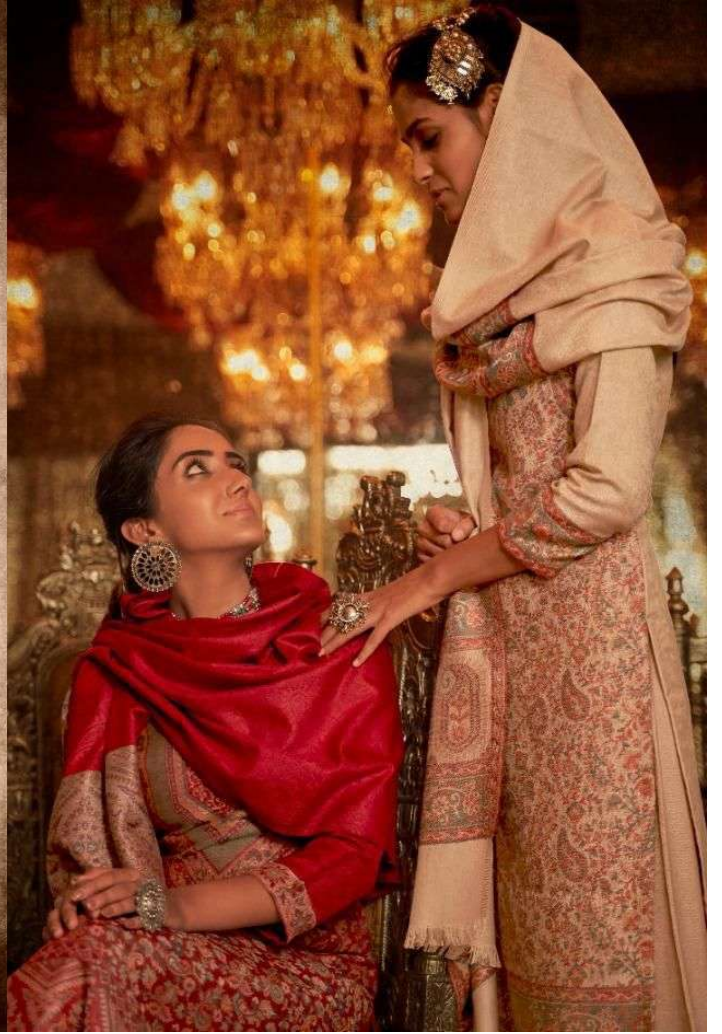


SHAN-E-IBADAT



KALKI

ESTABLISHED IN 1980





K
KALKI
K - 4800 |



KALKI

fashion

URDUO ETAB E HAYAT

GULMOHAR

VOL 5

