

A woman is the central focus, framed by an intricately carved stone archway. She is wearing a vibrant blue sari with a gold and white floral pattern, known as Bandhej. Her hands are raised, holding the top of the sari, and she is adorned with traditional jewelry including bangles, rings, and a large earring. The background is a soft-focus view of a lush green landscape. The overall mood is serene and elegant.

fiona®

BANDHEJ

A woman is the central figure, wearing a vibrant blue saree with intricate gold and white floral patterns. She is posed within a highly detailed, carved stone archway, with her hands raised to her head. The background is a blurred view of a traditional Indian building with similar architectural elements. The overall mood is elegant and traditional.

fiona®

BANDHEJ



fiona®



26065

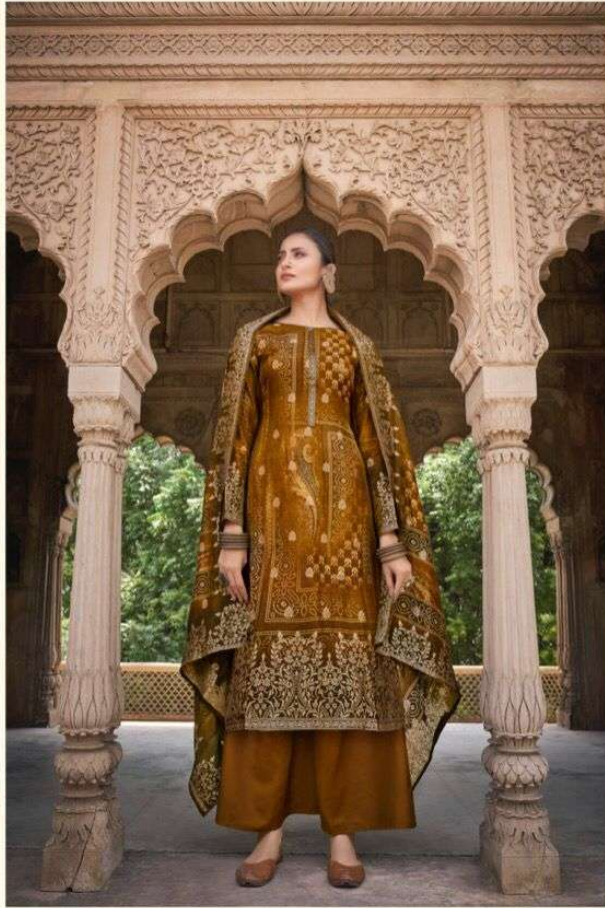
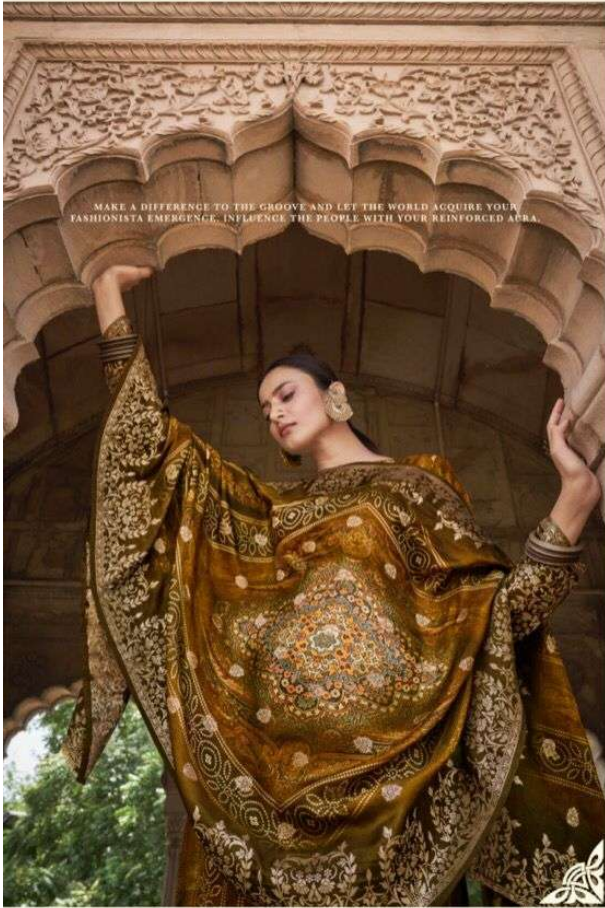
VOWS TO BE TOGETHER FOREVER WITH YOU ON ANY SPECIAL OCCASION IN YOUR LIFE.



EFFORTLESS CALIBRE OF CREATIVITY WHICH FEATURES THE BEAUTY IN A PERSON WITH BEAUTIFUL GARMENT.

26061





fiona®
26064



PREPARE TO BE DAZZLED IN AN UNFORGETTABLE ATTIRE OF
THE BREATHTAKING BEAUTY AND EMBARK ON THE BEAUTIFUL JOURNEY OF VOGUE





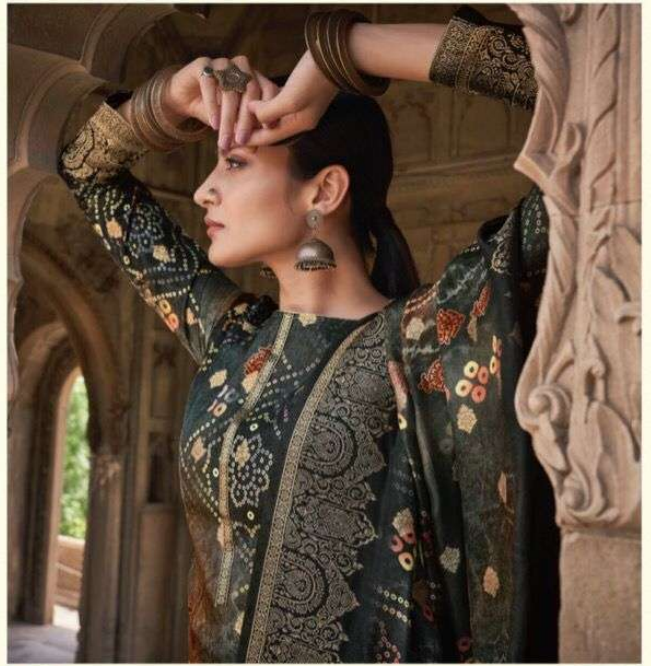
fiona®
BANDHEJ
THE APPRECIATION OF BEAUTY
AND ELEGANCE

fiona®

DESIGNS THAT WILL MAKE YOU LOOK AWESOME AND WHICH WILL
MAKE YOU STAND OUT FROM THE CROWD

26062





fiona®



26066

A PERFECT REMEDY FOR DREARY FASHIONABLE DAYS AND FOR STEPPING OUT WITH STYLE WITH YOUR GRACE IN FLAWLESS ATTIRE.



26061



26062



26063



26064



26065



26066

