

ayaan™

by **VIDUL**

*Soft Corner*  
BRILLIANCE







50805  
FANTASIA



50806  
FANTASIA



50807  
FANTASIA



50808  
FANTASIA



50809  
FANTASIA



50810  
FANTASIA



50811  
FANTASIA



50812  
FANTASIA



50813  
FANTASIA



50814  
FANTASIA



50815  
FANTASIA



50816  
FANTASIA





ayaan™

ॐ



Soft Corner  
BRILLIANCE





ayaan  
**viDui**  
E. EMBROIDERED  
*Soft Corner*  
SERIES

EXQUISITE COMFORT AND INNER LIGHT.  
PREMIER IN FEMINE BEAUTY.  
STYLISH AND BECOMING. AVAILABLE IN 2 INCHES.  
FEATURING IN AN ACCESSIBLE SPREAD.  
DESIGNED BY PINKI KUMAR. 100% COTTON.  
GOLDEN FLOWER FRANKS IN THE GOLDEN BORDER.  
AND SILVER BOWTIE TRIMMED FABRIC. GIVE EIGHT.  
EACH SIDE OF THE FABRIC IS 100% COTTON.  
DESIGNED BY PINKI KUMAR. 100% COTTON.  
EACH SIDE OF THE FABRIC IS 100% COTTON.







50805  
SANTOSA

ayaan™  
viDUL  
Soft Corner  
SANTOSA

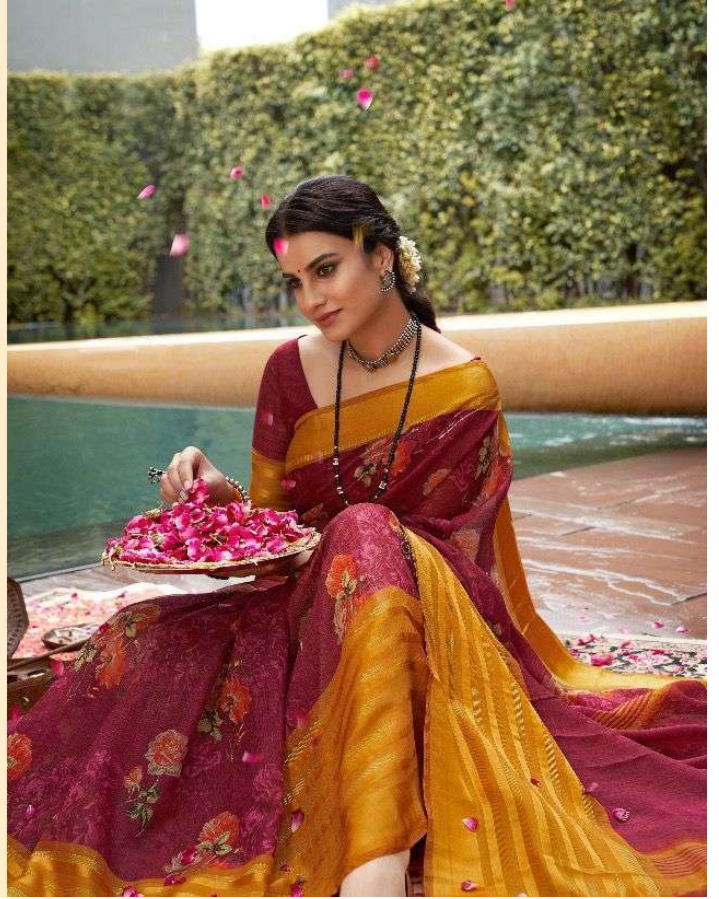




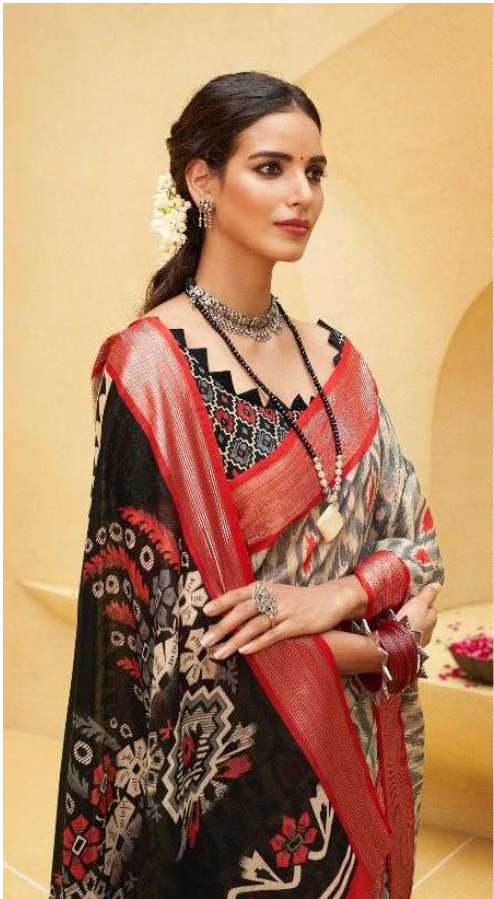




ayaan™  
by  
**VIJUL**  
A PURSATA COMPANY  
*Soft Corner*  
BY ANITA D

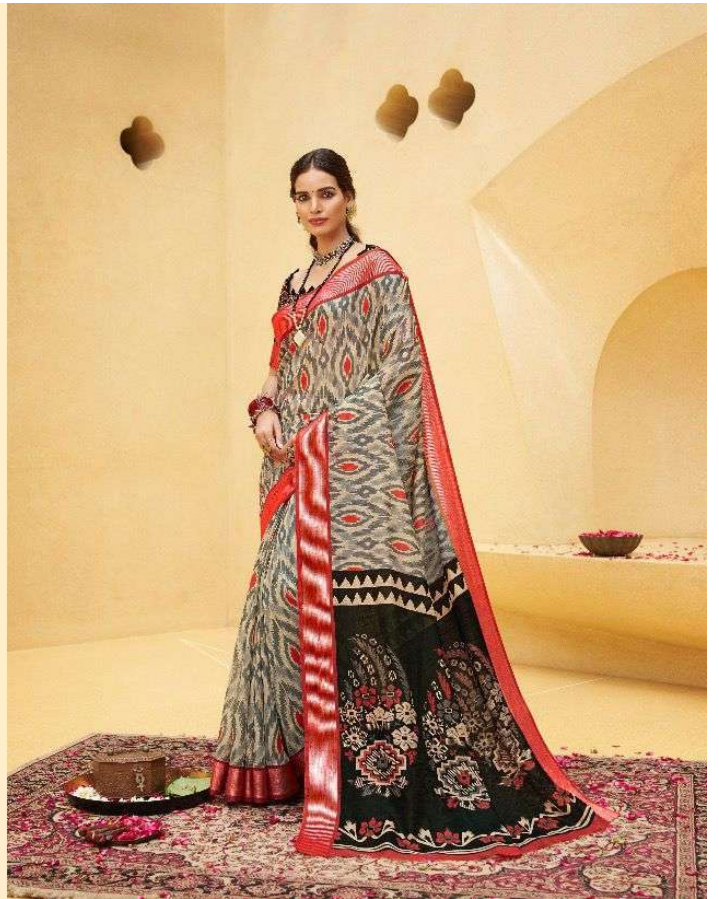






ayaan™  
VI PUL  
Soft Corner

50808  
PINKISH





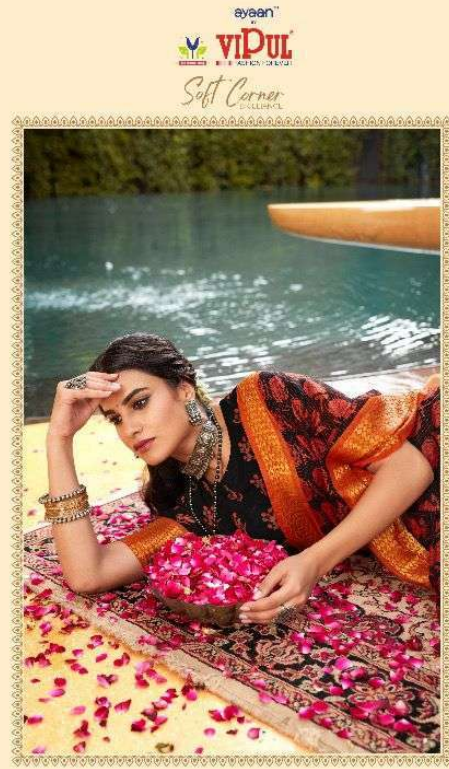
ayaan  
viDUL  
Soft Corner  
BRILLIANCE











ayaan™  
**viDUL**  
BY ARIEN SINGH

*Soft Corner*  
COLLECTION

50813  
PANGSIA





ayaan  
viDUL  
Soft Corner

50812  
SAREE





eyeen™  
**viDUL**  
BY THE ARTISTS OF LAKSHI  
*Soft Corner*  
COLLECTION

50015  
FABRICA





