



RAINBOW

Malai Cotton With B.P

Single Colour Matching



RAINBOW

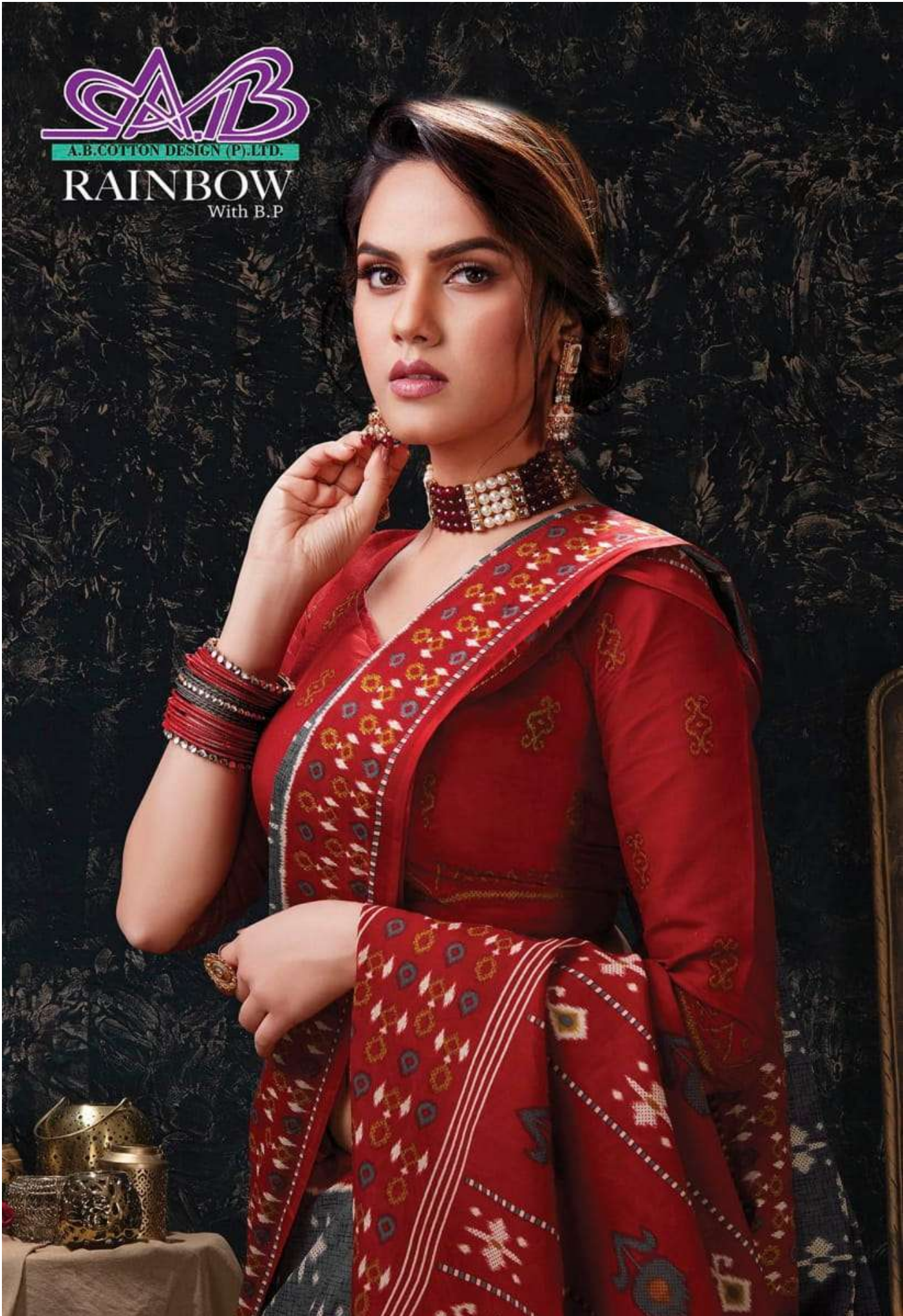
Malai Cotton With B.P

Single Colour Matching

SAB

A.B. COTTON DESIGN (P) LTD.

RAINBOW
With B.P



A woman is the central figure, wearing a saree with a grey body and a red border. The saree features a repeating pattern of white and grey geometric shapes. The red border is wide and contains a complex pattern of white and blue geometric motifs. She is also wearing a red blouse with a similar pattern. Her accessories include a gold necklace, earrings, and bangles. The background is dark and textured, with a decorative archway visible behind her.

SAIB

A.B.COTTON DESIGN (P).LTD.

RAINBOW
With B.P

D.NO.
09



SAIB
A.B.COTTON DESIGN (P).LTD.

RAINBOW
With B.P

D.NO.
10



SAIB

A.B.COTTON DESIGN (P).LTD.

RAINBOW
With B.P

D.NO.
11



SAIB

A.B.COTTON DESIGN (P).LTD.

RAINBOW
With B.P

D.NO.
12

The logo for A.B. Cotton Design (P) Ltd. features the letters 'A', 'B', and 'C' intertwined in a stylized, purple, cursive font. Below the logo is a teal rectangular box containing the text 'A.B. COTTON DESIGN (P) LTD.' in white, uppercase letters.

A.B. COTTON DESIGN (P) LTD.

RAINBOW
With B.P



D.NO.
13



SAIB

A.B.COTTON DESIGN (P).LTD.

RAINBOW
With B.P

D.NO.
14

The logo for A.B. Cotton Design (P.) Ltd. features the letters 'A', 'B', and 'C' in a stylized, overlapping purple font. The 'A' and 'B' are connected, and the 'C' is positioned below them. The letters are outlined in white and set against a dark purple background.

A.B. COTTON DESIGN (P.) LTD.

RAINBOW
With B.P



D.NO.
15

SAB

A.B.COTTON DESIGN (P).LTD.

RAINBOW
With B.P



SAIB
A.B.COTTON DESIGN (P).LTD.



D.NO.
16

The logo for A.B. Cotton Design (P) Ltd. features the letters 'A', 'B', and 'C' intertwined in a stylized, purple, cursive font.

A.B.COTTON DESIGN (P).LTD.

RAINBOW
With B.P



D.NO.
17



SAIB

A.B.COTTON DESIGN (P).LTD.

RAINBOW
With B.P

D.NO.
18



SAIB

A.B.COTTON DESIGN (P).LTD.

RAINBOW
With B.P

D.NO.
19



SAIB

A.B.COTTON DESIGN (P).LTD.

RAINBOW
With B.P

D.NO.
20



SAIB

A.B.COTTON DESIGN (P.)LTD.

RAINBOW
With B.P

D.NO.
21



SAIB

A.B.COTTON DESIGN (P).LTD.

RAINBOW
With B.P

D.NO.
22

A woman with long, wavy brown hair is wearing a saree with a green and pink color scheme. The saree has a repeating diamond pattern in green on a light background, and a wide pink border with a geometric zig-zag pattern. She is also wearing a pink blouse with a matching pattern. The background is dark and textured, with a large, ornate, empty mirror frame to the right. In the bottom left corner, there is a small table with a white cloth and some decorative items.

SAB

A.B.COTTON DESIGN (P).LTD.

RAINBOW
With B.P

D.NO.
23



DNO 09



DNO 10



DNO 11



DNO 12



DNO 13



DNO 14



DNO 15



DNO 16



DNO 17



DNO 18



DNO 19



DNO 20



DNO 21



DNO 22



DNO 23



RAINBOW
Malai Cotton With B.P
Single Colour Matching