

A woman is shown from the chest up, wearing a black headscarf with gold embroidery. She has dark hair and is wearing a black dress with intricate gold floral embroidery. She is also wearing a large gold necklace, matching earrings, and a forehead ornament. The background is a blurred indoor setting.

ZARQASH[®]
A BRAND BY *Kutub*

CRIMSON

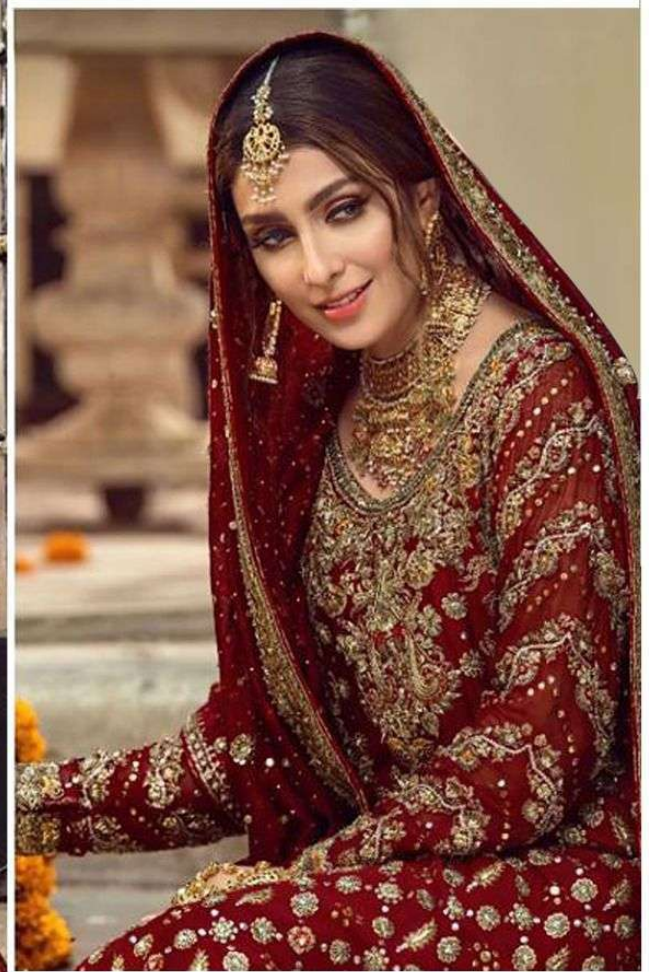
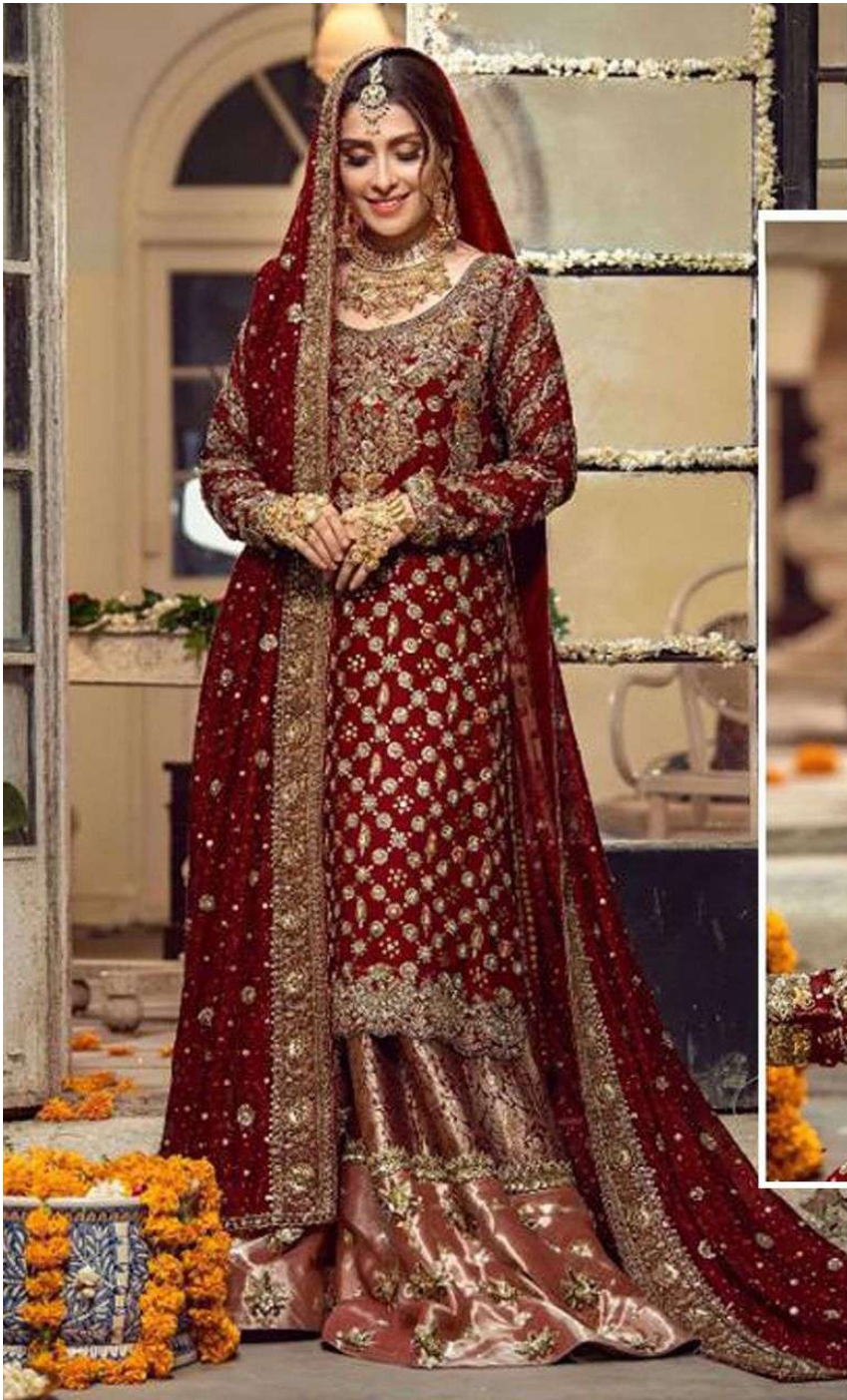


ZARQASH[®]
A BRAND BY *Kutiyaw*

CRIMSON

ZARQASH®
A BRAND BY KUTTYA

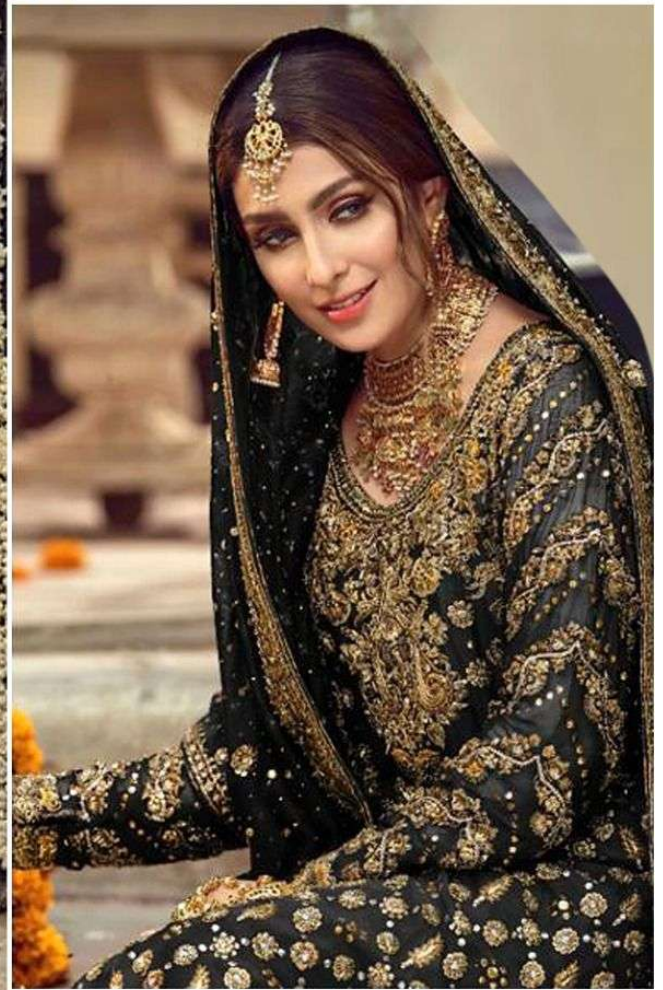
Z-2069 A



TOP - FOX GEORGEATE WITH HEAVY EMBROIDERED
WITH DAIMOND WORK
INNER - HEAVY SANTOON SILK
BOTTOM- JAQUARD WITH SEANTUN EMB LACE
DUPATTA - NAZNEEN WITH HEAVY EMBROIDERED

ZARQASH®
A BRAND BY KUTUMBA

Z-2069 B



TOP - FOX GEORGEATE WITH HEAVY EMBROIDERED
WITH DAIMOND WORK
INNER - HEAVY SANTOON SILK
BOTTOM- JAQUARD WITH SEANTUN EMB LACE
DUPATTA - NAZNEEN WITH HEAVY EMBROIDERED

ZARQASH[®]
A BRAND BY Kozmic

CRIMSON



Z-2069 A



Z-2069 B

TOP - FOX GEORGEATE WITH HEAVY EMBROIDERED
WITH DAIMOND WORK
INNER - HEAVY SANTOON SILK
BOTTOM- JAQUARD WITH SEANTUN EMB LACE
DUPATTA - NAZNEEN WITH HEAVY EMBROIDERED