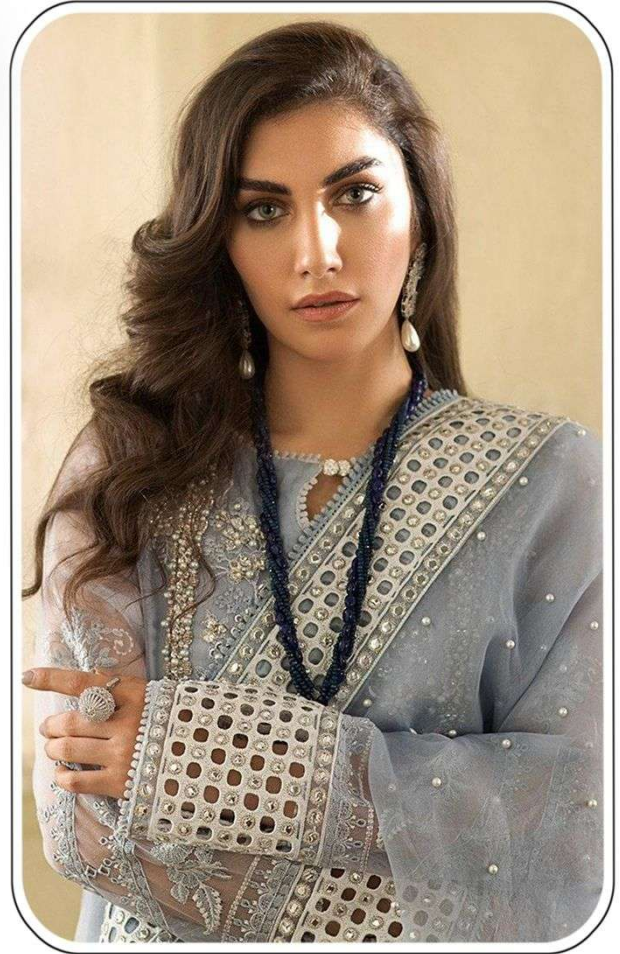



SHANAYA[®]

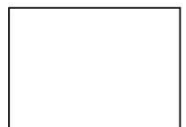


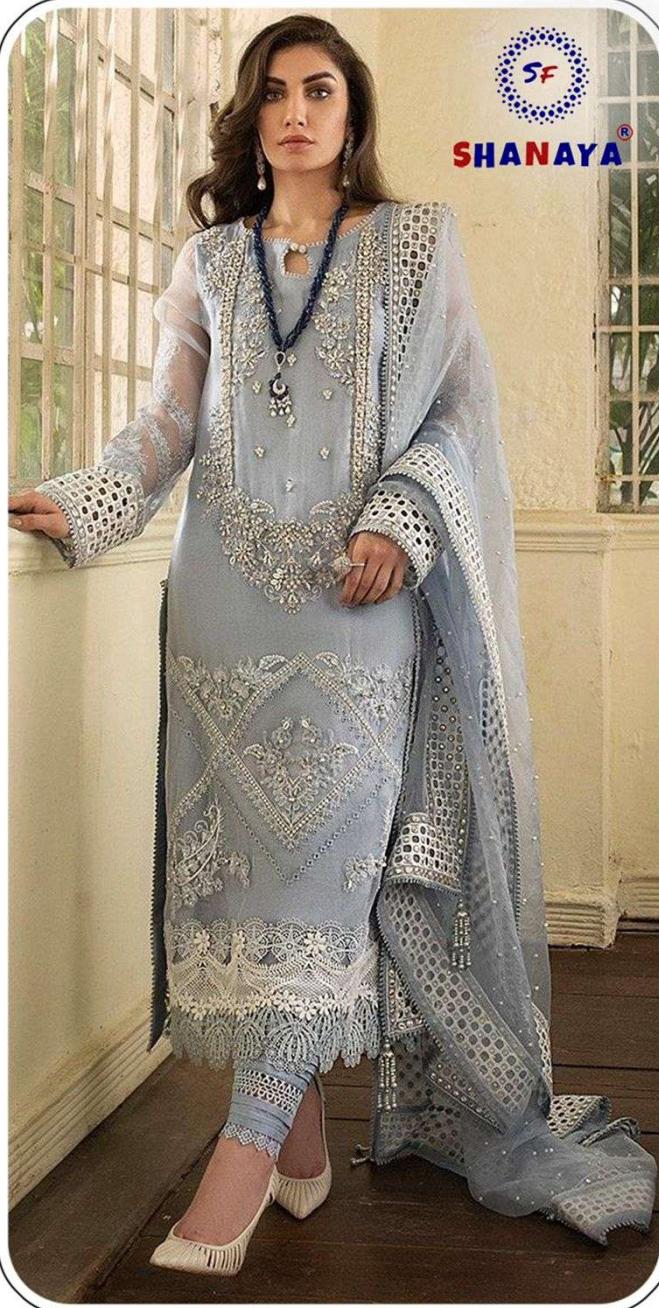
Rose
BRIDAL


S-87

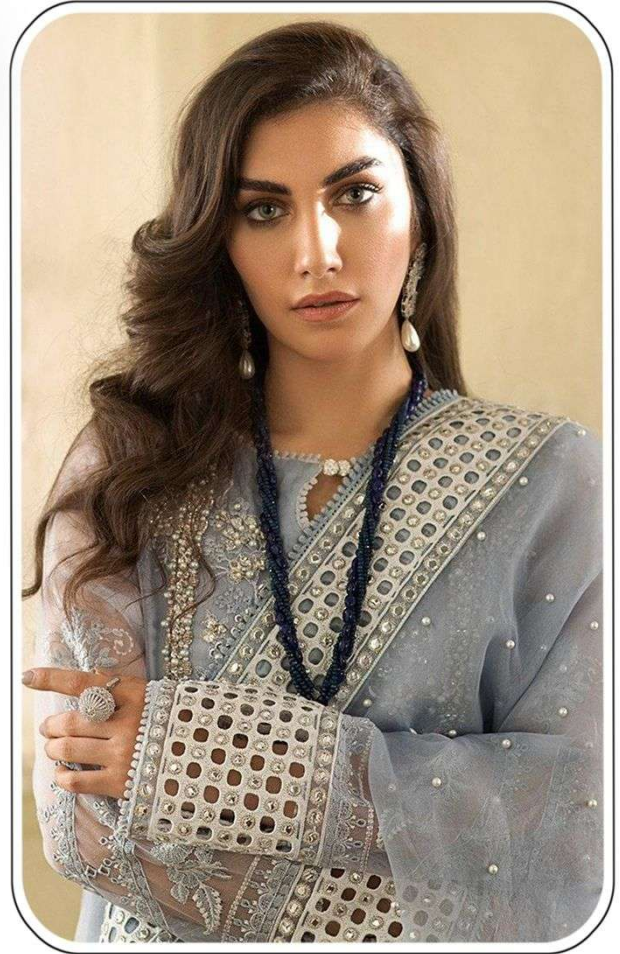

WASHING INSTRUCTIONS

DO NOT USE ANY TYPE OF BLEACH OR STAIN REMOVING CHEMICALS
 BEFORE CUTTING / STITCHING, FABRIC SHOULD BE SOAKED IN WATER
 (ALL COMPONENTS SEPARATELY) FOR 15 MINUTES
 DO NOT KEEP WET FABRIC IN TWISTED FROM IN ORDER TO AVOID COPY MARKS |
 WASH COLOURED AND WHITE FABRICS SEPARATELY
 IRON CLOTHES AT MODERATE TEMPERATURE | DO NOT DRY FABRIC IN DIRECT SUNLIGHT
 (EXTRA LACES, HANGINGS AND ACCESSORIES ARE NOT INLUDED)





SF
SHANAYA®



Rose
BRIDAL

S-87

WASHING INSTRUCTIONS

DO NOT USE ANY TYPE OF BLEACH OR STAIN REMOVING CHEMICALS
BEFORE CUTTING / STITCHING, FABRIC SHOULD BE SOAKED IN WATER
(ALL COMPONENTS SEPARATELY) FOR 15 MINUTES
DO NOT KEEP WET FABRIC IN TWISTED FROM IN ORDER TO AVOID COPY MARKS |
WASH COLOURED AND WHITE FABRICS SEPARATELY
IRON CLOTHES AT MODERATE TEMPERATURE | DO NOT DRY FABRIC IN DIRECT SUNLIGHT
(EXTRA LACES, HANGINGS AND ACCESSORIES ARE NOT INCLUDED)

