

*nakkashi*<sup>®</sup>  
*Meera* . . .



# Meera

NO	D.NO	DESCRIPTION	RATE
1	4270	Bottle green banarasi lehenga with tassels paired with rani colour banarasi duppata with tassels,having bottle green banarasi blouse	2635
2	4271	Gajjari banarsi lehenga with tassels paired with rama colour banarasi duppata with tassels,having gajjari banaasi blouse	2635
3	4272	Mustard banarasi lehenga with tassels paired with bottle green colour banarasi duppata with tassels, having rani banarasi blouse	2635
4	4273	Navy blue banarasi lehenga with tassels paired with rani colour banarasi duppata with tassels,having navy blue banarasi blouse	2635
5	4274	Wine banarasi lehenga with tassels paired with rama colour banarasi duppata with tassels,having wine banarasi blouse	2635
6	4275	Rani banarasi lehenga with tassels paired with rama colour banarasi duppata with tassels, having navy blue banarasi blouse	2635
7	4276	Red banarasi lehenga with tassels paired with mustard colour banarasi duppata with tassels, having red banarasi blouse	2635
8	4277	Black banarasi lehenga with tassels paired with black colour banarasi duppata with tassels, having wine banarasi blouse	2635
9	4278	Rama banarasi lehenga with tassels paired with navy blue colour banarasi duppata with tassels,having maroon banarasi blouse	2635
			23715

Note :- Lehenga ghera is 3 meters plus with cancan and bukram. Dupatta / Pallu : 2.40 meters.Blouse : 0.90 meters.

nakkashi

शुभ्रा

Gujjari banarsi lehenga with tassels paired with rana odhar  
banarsi dupatta with tassels, having gujjari banarsi blouse  
◆ 4271 ◆



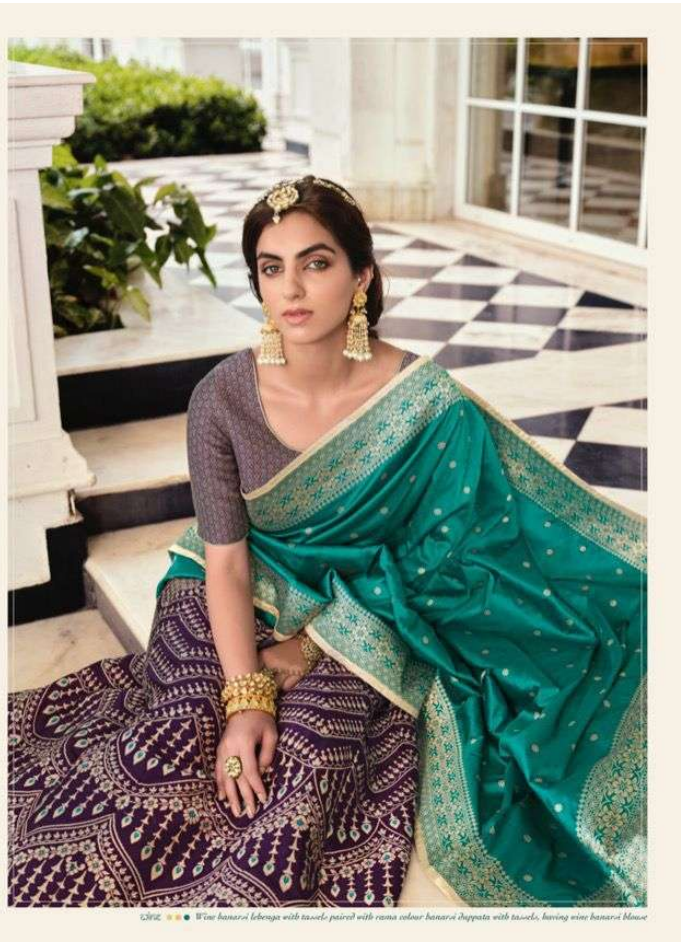


nakkashi

◆ 4274 ◆

SIZE ● ● Wine banarasi lehenga with tassels paired with ruma colour banarasi shoppata with tassels, having wine banarasi blouse







◆ 4270 ◆



◆ 4271 ◆



◆ 4272 ◆



◆ 4273 ◆



◆ 4274 ◆



◆ 4275 ◆



◆ 4276 ◆



◆ 4277 ◆



◆ 4278 ◆



nakkashi



nakkashi

◆ 4277 ◆

Black

Black banarasi lehenga with tassels paired with black colour  
banarasi dupatta with tassels, having  
wine banarasi blouse





19953 • • • Rama banarasi Lehenga with tassels paired with navy blue colour banarasi dupatta with tassels, having maroon banarasi blouse



nakkashi  
♦ 4278 ♦





Back  • Black banarsi lehenga with tassels paired with black colour banarsi dupatta with tassels having wine banarsi blouse

nakkashi

• 4876 •

Red • • • Red banarsi lehenga with tassels paired with mustard colour banarsi dupatta with tassels having red banarsi blouse





nakkashi

◆ 4278 ◆

PK053

*Rama banarsi lehenga with tassels, paired with navy blue colour banarsi dupatta with tassels, having maroon banarsi blouse*



nakkashi



• 4278 •

1992 • *Rani banarsi lehenga with tassels paired with same colour banarsi dupatta with tassels, having navy blue banarsi blouse*

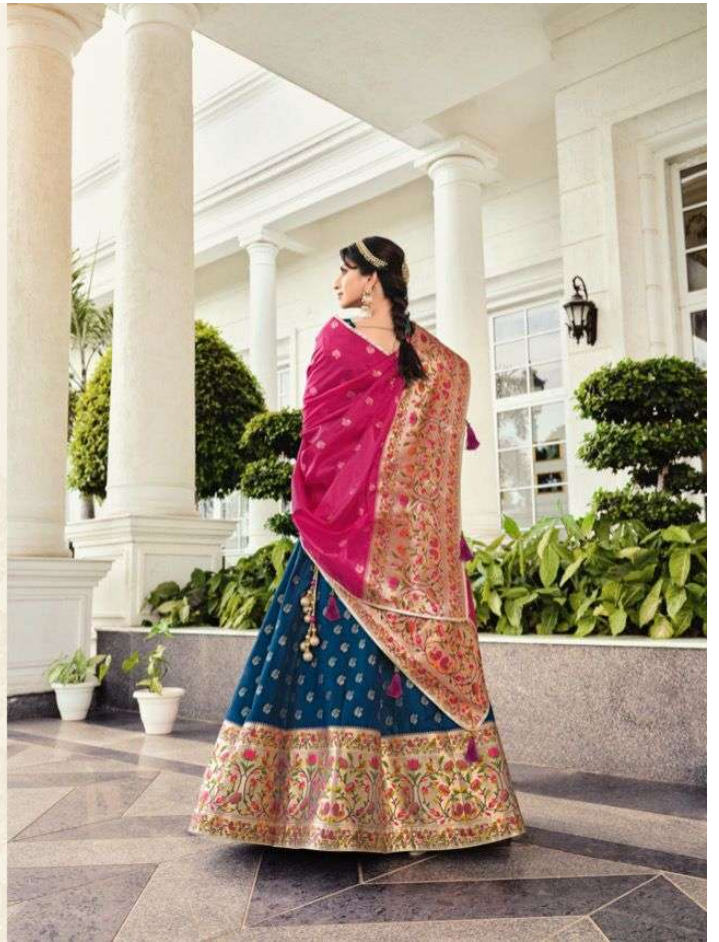




nakkashi

◆ 4978 ◆

128073 ●●● Navy blue banarasi lehenga with tassels, paired with rani colour banarasi dupatta with tassels, having navy blue banarasi blouse







nakkashi  
• 4872 •



स्वर्णरत्न • • • • • Mustard banarsi lehenga with tassels paired with bottle-green colour banarsi dupatta with tassels, having rani banarsi blouse



nakkashi

◆ 4272 ◆

लवंगुलाने ●●● Mustard banarsi lehenga with tassels paired with bottle green banarsi dupatta with tassels, having rani banarsi blouse





*nakkashi*

अभिलेख

one art for the women





4273 • • • Navy blue banarsi lehenga with tassels paired with royal colour banarsi dupatta with tassels, having navy blue banarsi blouse

*nakkashi*<sup>®</sup>  
*Meera*



