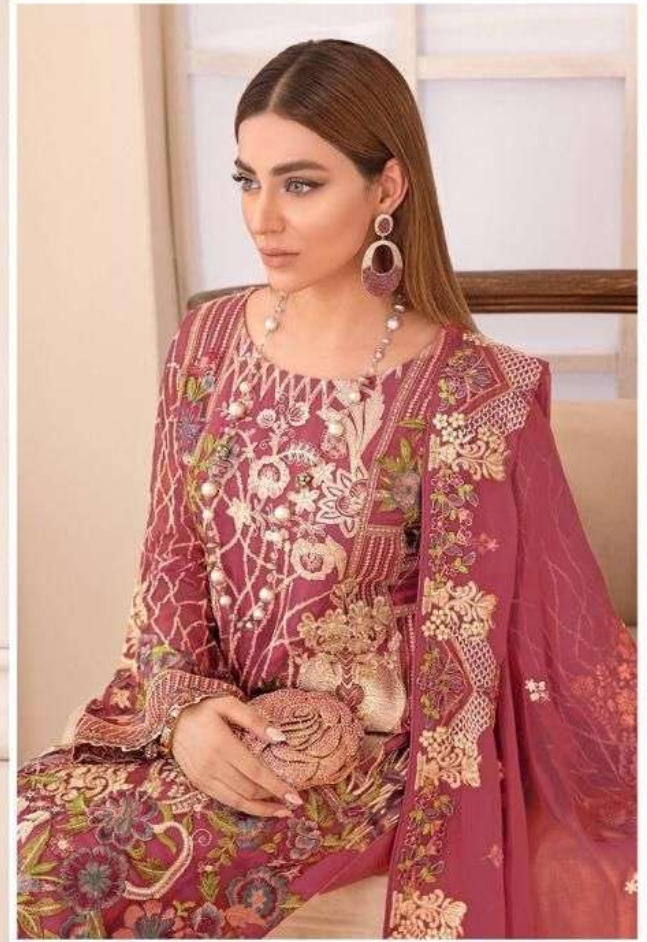


Fepic[®]



WASHING INTRUCTIONS

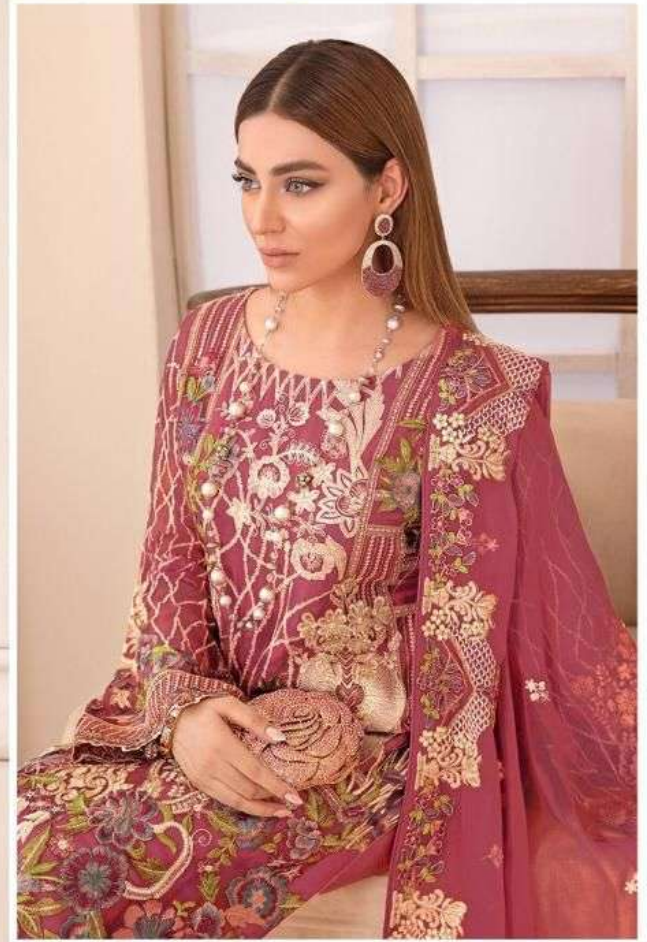
DO NOT USE ANY TYPE OF BLEACH OR STAIN REMOVING CHEMICALS
BEFORE CUTTING / STITCHING. FABRIC SHOULD BE SOAKED BE SOAKED IN WATER
(ALL COMPONENTS SEPARATELY) FOR 15 MINUTES
DO NOT KEEP WET FABRIC IN TWISTED FROM IN ORDER TO AVOID COPY MARKS |
WASH COLOURED AND WHITE FABRICS SEPARATELY
IRON CLOTHES AT MODERATE TEMPERATURE | DO NOT DRY FABRIC IN DIRECT SUNLIGHT
(EXTRA LACES, HANGINGS AND ACCESSORIES ARE NOT INDUDED)

Rosemeen[®]



D.NO.90012

Fepic[®]



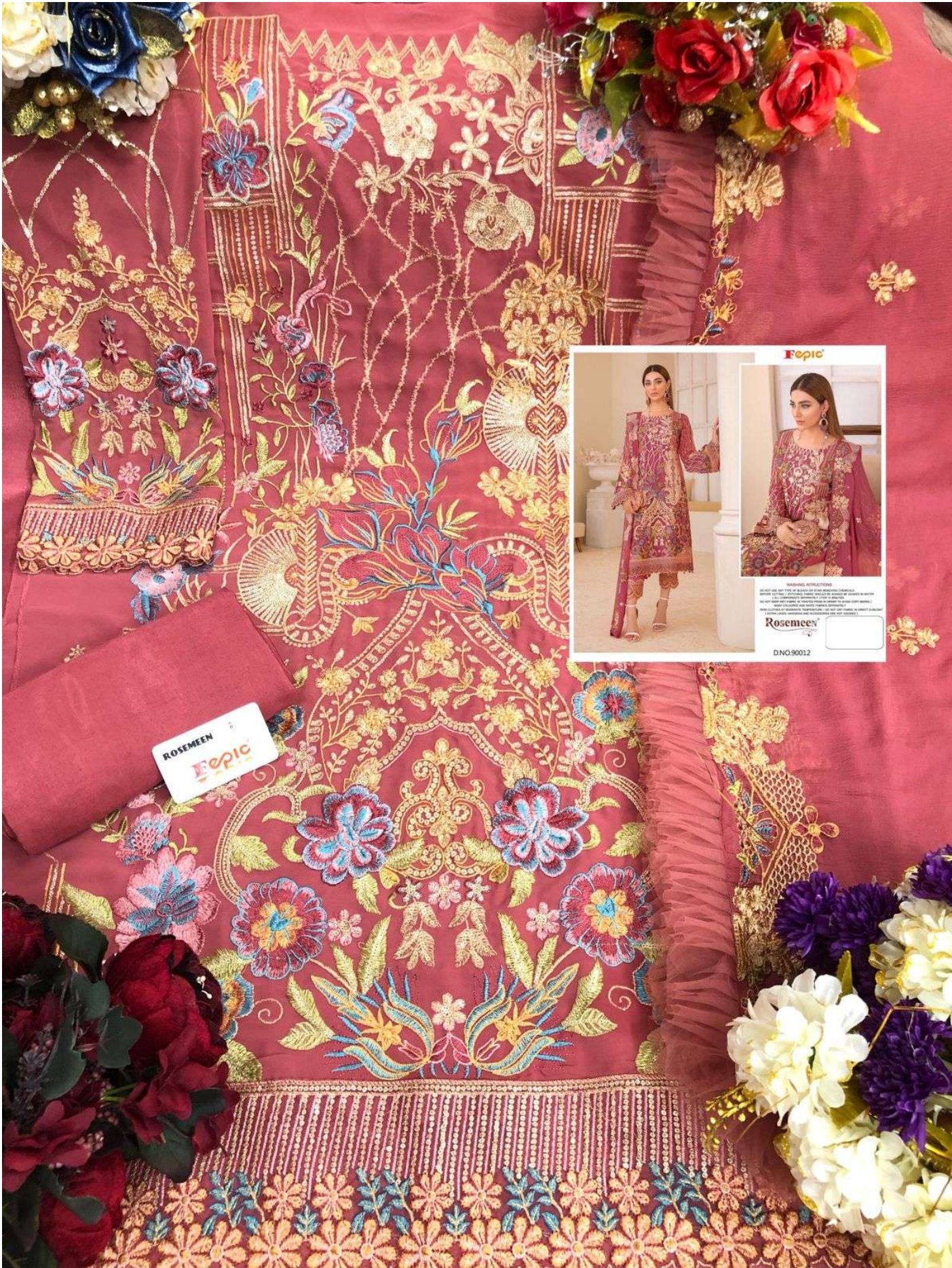
WASHING INTRUCTIONS

DO NOT USE ANY TYPE OF BLEACH OR STAIN REMOVING CHEMICALS
BEFORE CUTTING / STITCHING. FABRIC SHOULD BE SOAKED BE SOAKED IN WATER
(ALL COMPONENTS SEPARATELY) FOR 15 MINUTES
DO NOT KEEP WET FABRIC IN TWISTED FROM IN ORDER TO AVOID COPY MARKS |
WASH COLOURED AND WHITE FABRICS SEPARATELY
IRON CLOTHES AT MODERATE TEMPERATURE | DO NOT DRY FABRIC IN DIRECT SUNLIGHT
(EXTRA LACES, HANGINGS AND ACCESSORIES ARE NOT INDUDED)

Rosemeen[®]

D.NO.90012





ROSEMEEN
Fepic



Fepic



WASHING INSTRUCTIONS
DO NOT USE HOT WATER OR DRYER. WASH IN COLD WATER.
DO NOT BLEACH. DO NOT IRON. DO NOT TUMBLE DRY.
DO NOT USE ANY HARSH CHEMICALS. DO NOT USE ANY
DYE. DO NOT WASH WITH OTHER COLORS. DO NOT WASH
WITH OTHER FABRICS. DO NOT WASH WITH OTHER
MATERIALS. DO NOT WASH WITH OTHER
MATERIALS. DO NOT WASH WITH OTHER

Rosemeen

DNO90012