


HOOR TEX





20013-E

FABRIC DETAILS
 TOP- FOX GEORGEETE
 BOTTAM/INNER - SANTOON
 DUPPTA- HEAVY NAZMEEN



20013-F

FABRIC DETAILS
 TOP- FOX GEORGEETE
 BOTTAM/INNER - SANTOON
 DUPPTA- HEAVY NAZMEEN



20013

FABRIC DETAILS
 TOP- FOX GEORGEETE
 BOTTAM/INNER - SANTOON
 DUPPTA- HEAVY NAZMEEN



20013-B

FABRIC DETAILS
 TOP- FOX GEORGEETE
 BOTTAM/INNER - SANTOON
 DUPPTA- HEAVY NAZMEEN





23013-G

FABRIC DETAILS
 TOP- FOX GEORGETTE
 BOTTAMINNER- SANTOON
 DUFFLA- HEAVY NAZMEEN

WASHING INSTRUCTIONS

DO NOT USE ANY TYPE OF BLEACH OR COLOR REMOVING CHEMICALS
 BEFORE COLDING. FABRIC SHOULD BE DAMPED IN WATER
 (ALL COMPONENTS SEPARATELY IF NOT TO HANDLE)
 DO NOT IRON ANY FABRIC IN THISTLED IRON OR UNDER TO AVOID COPY MARKS!
 HIGH COLOURED AND HEAVY FABRICS SPREADS
 HIGH QUALITY AT MODERATE TEMPERATURE. DO NOT DRY FABRIC IN DIRECT SUNLIGHT
 (EXTRA LACES, HANGINGS AND ACCESSORIES ARE NOT PROVIDED.)



23013-H

FABRIC DETAILS
 TOP- FOX GEORGETTE
 BOTTAMINNER- SANTOON
 DUFFLA- HEAVY NAZMEEN

WASHING INSTRUCTIONS

DO NOT USE ANY TYPE OF BLEACH OR COLOR REMOVING CHEMICALS
 BEFORE COLDING. FABRIC SHOULD BE DAMPED IN WATER
 (ALL COMPONENTS SEPARATELY IF NOT TO HANDLE)
 DO NOT IRON ANY FABRIC IN THISTLED IRON OR UNDER TO AVOID COPY MARKS!
 HIGH COLOURED AND HEAVY FABRICS SPREADS
 HIGH QUALITY AT MODERATE TEMPERATURE. DO NOT DRY FABRIC IN DIRECT SUNLIGHT
 (EXTRA LACES, HANGINGS AND ACCESSORIES ARE NOT PROVIDED.)



H[®]
HOOR TEX

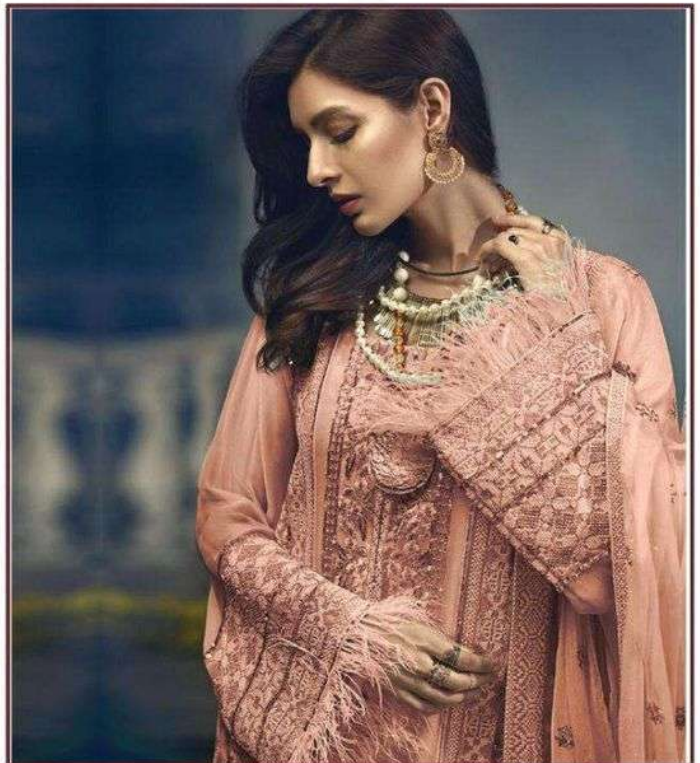


20013-C

FABRIC DETAILS
 TOP- FOX GEORGEETE
 BOTTAM/INNER - SANTOON
 DUPPTA- HEAVY NAZMEEN



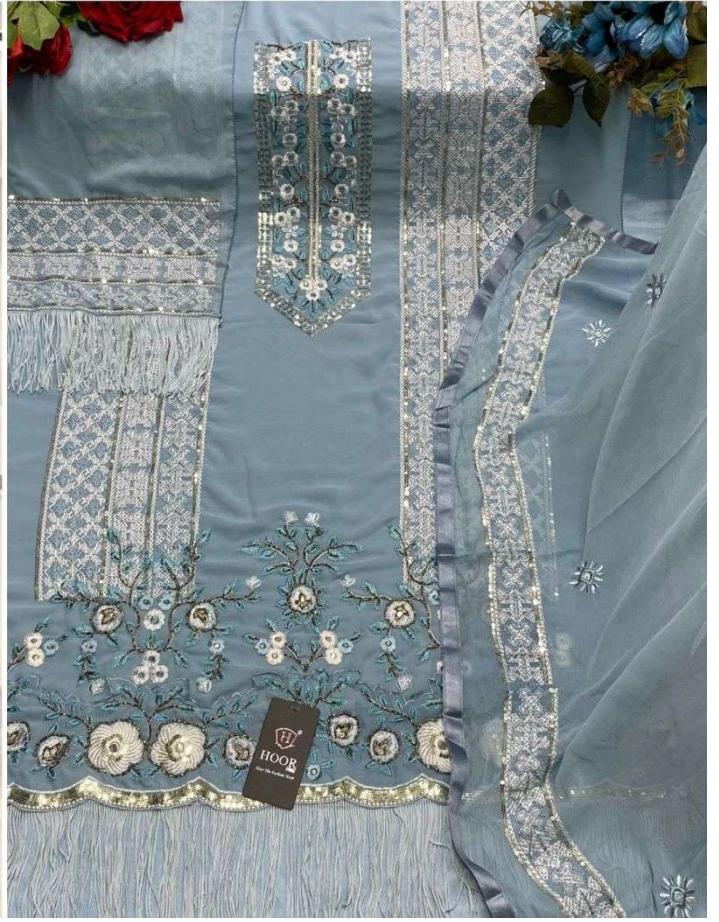
H[®]
HOOR TEX

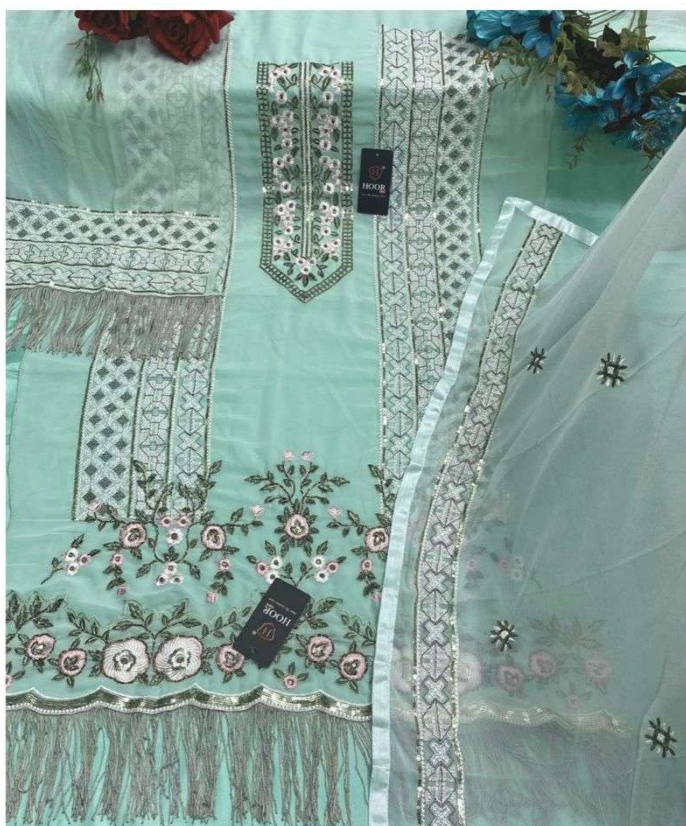


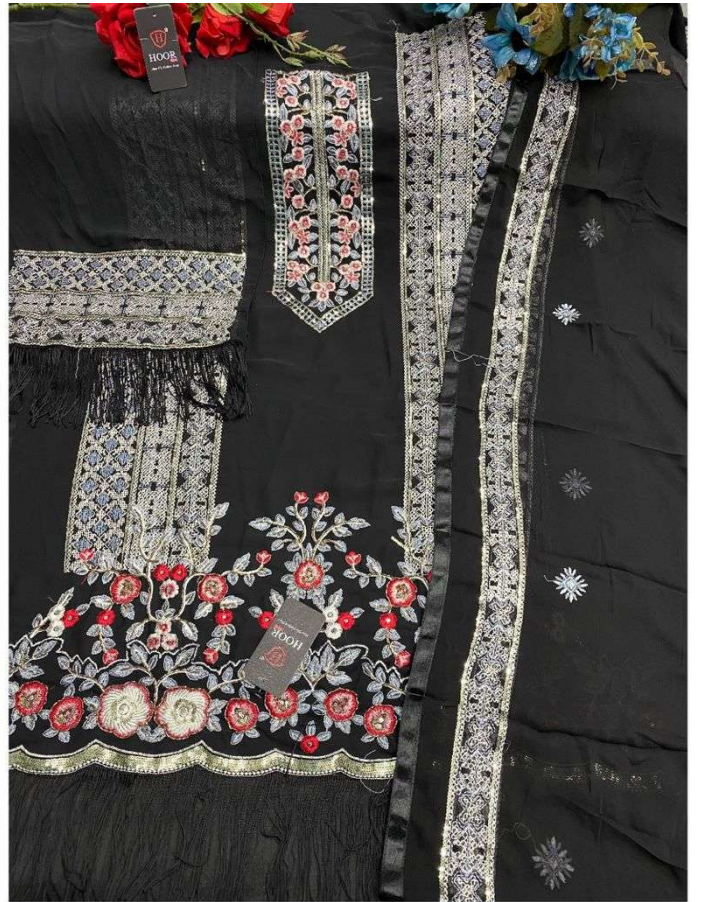
20013-D

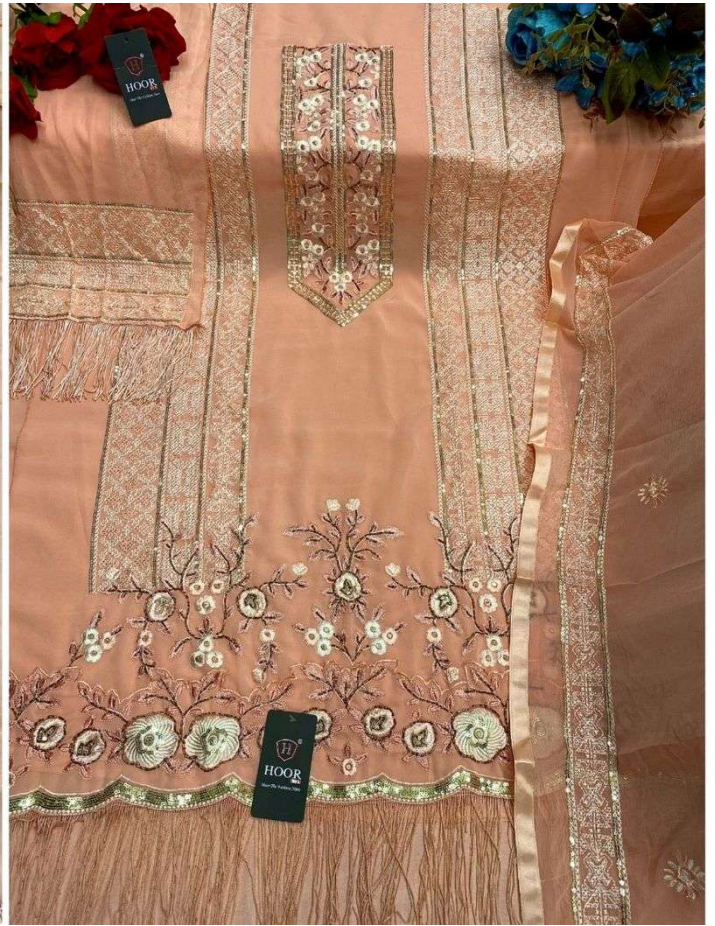
FABRIC DETAILS
 TOP- FOX GEORGEETE
 BOTTAM/INNER - SANTOON
 DUPPTA- HEAVY NAZMEEN













20013-A



20013-B



20013-C



20013-D



20013-E



20013-F



20013-G



20013-H



HOOR TEX
Hoor The Fashion Noor