



| 24458 |





# SHEESHA STARWALK-69

## FABRIC DETAILS

**SAREE**  
PRINTED SILK GEORGETTE  
WITH EMB BORDER

**BLOUSE**  
SILK BLOUSE WITH  
EMB BORDER

HSN CODE-54075230



VINAY FASHION LLP  
@vinay.f

# THE STUNNER

It is the most beautiful moment  
in life when you find someone  
who is just what you need. From  
the way they look to the way  
they think, they are perfect for  
you. They are the one who  
makes you feel like you are  
home. They are the one who  
makes you feel like you are  
loved. They are the one who  
makes you feel like you are  
special. They are the one who  
makes you feel like you are  
the only one.









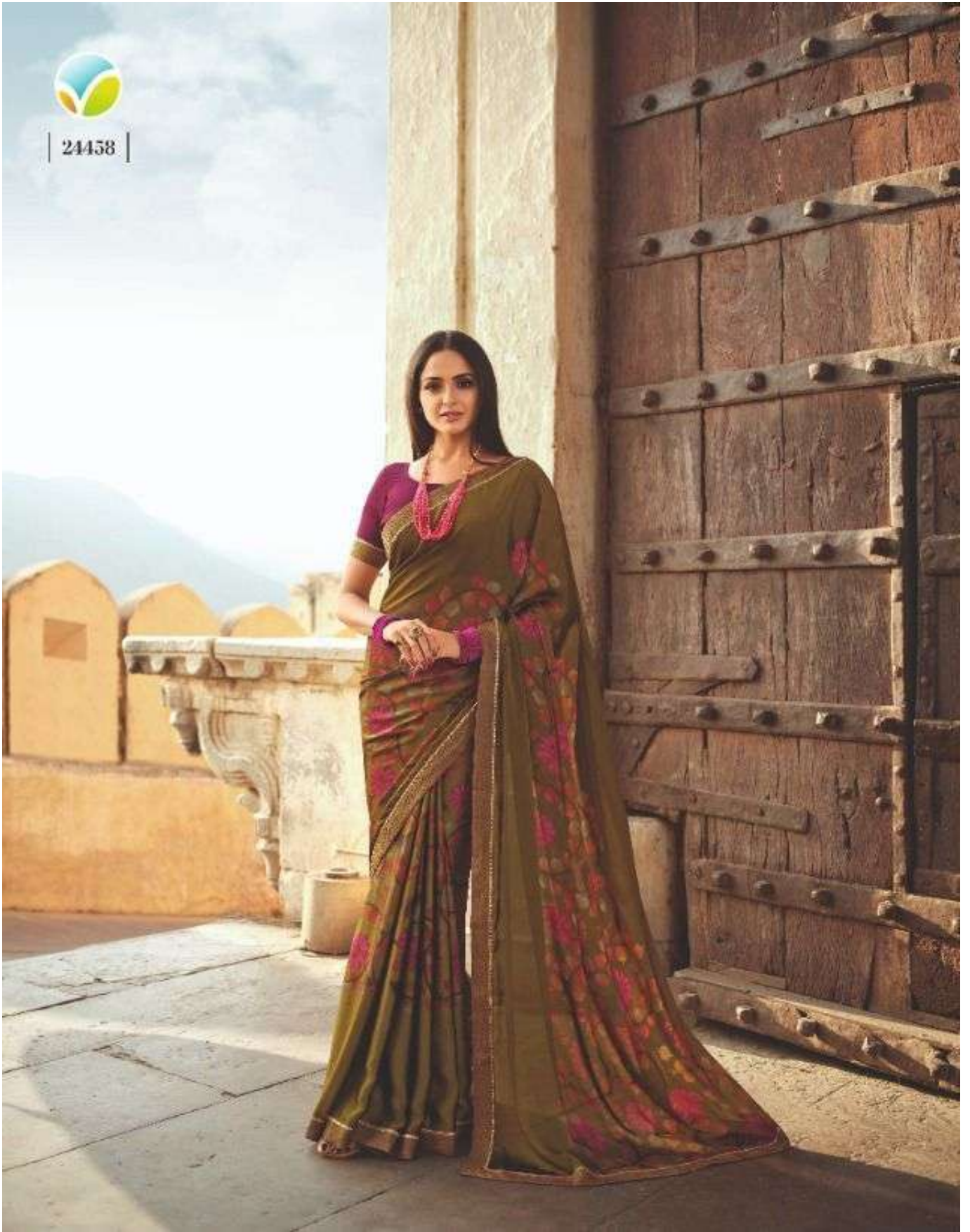
| 24458 |







| 24458 |

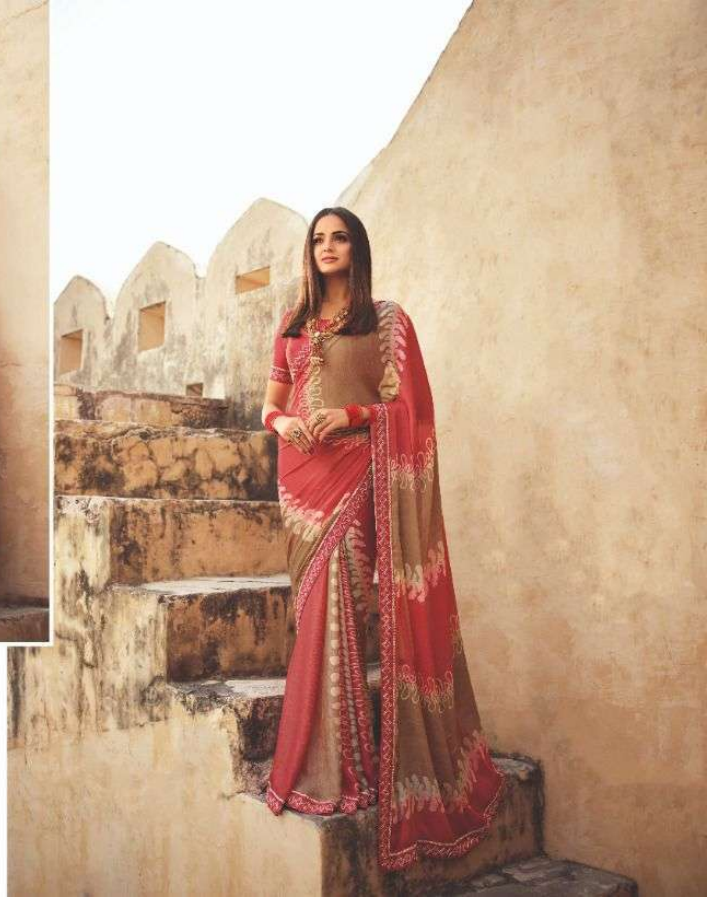








| 24459 |







  
| 24461 |





24451



24452



24453



24457



24458



24459



24454



24455



24456



24460



24461

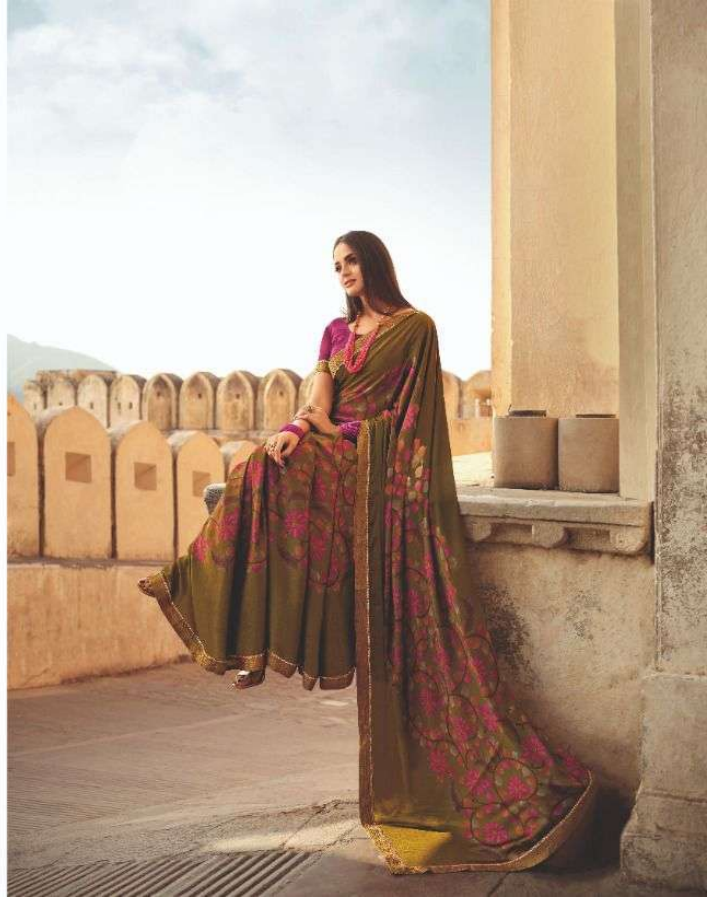
**VINAY**  
 VINAY FASHION LLP  
*Sheesha*  
 A Brand by Vinay  
 STARWALK-69  
 A Product by Sheesha



# THE ART

Designing all garments in velvet fabric, adorned with sheer fabrics, artistically designed floral patterns and contrast borders, our entire saree collection speaks in tune to the heavenly and elegant of this time, thereby personal.

| 21458 |









# THE GRACE

Grace is an ethereal quality, which sets you apart from the rest. It is a quality that is not taught, but rather, it is a natural gift. It is a quality that is not measured, but rather, it is a quality that is felt. It is a quality that is not fleeting, but rather, it is a quality that is enduring. It is a quality that is not ordinary, but rather, it is a quality that is extraordinary. It is a quality that is not just a word, but rather, it is a quality that is a way of life.

24457







| 24453 |





# THE MAGIC

Continuing trends, rising patterns, reminiscent of the vibrant and heritage of the country, each one together to form the patterns of grace and glamour. These are the art and dress patterns with uniquely, special pop of colors, are best to speak some, if you are looking for a new look.

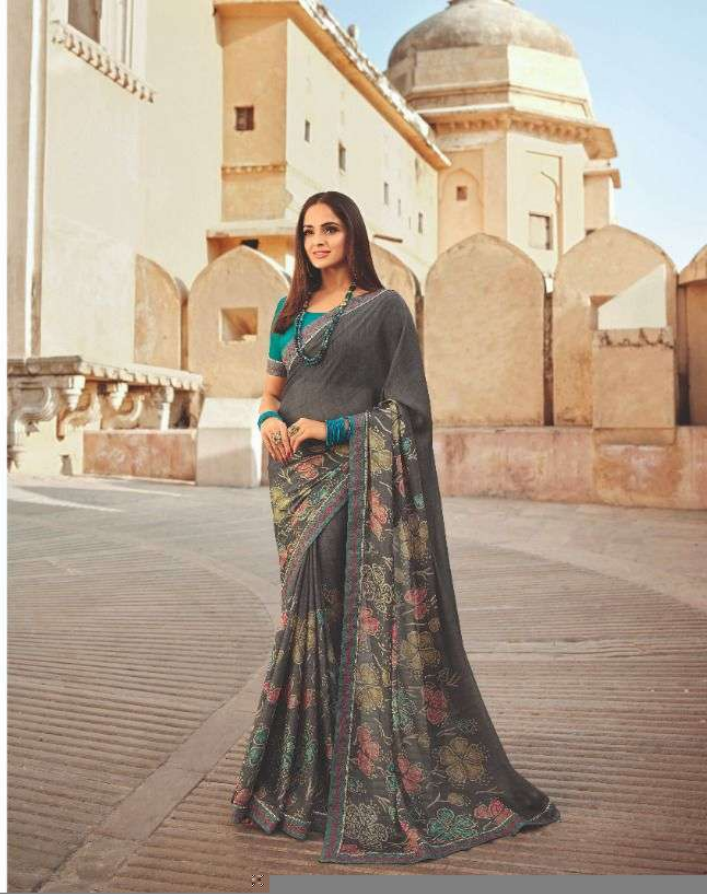




| 24454 |

# T H E BALANCE

**S**taking the right balance between soft and dramatic, our next sangeet saree choice promise to keep all eyes on you the whole while you are here. Since this collection include Soft Future and adorable hues that come with assistance in printed floral motifs, making sure to set your ethnic style game this season.







# THE HUES



24452

**C**harm makes everything better, don't you think? The hue we wear, even in simple tones, can speak with your favourite hues, and we strive to perfection. Something more, beautiful, made with our latest technology, all we gather is a collection that is worth to cherish.