




Summer Shades
Cotton linen

Summer Shades
Cotton linen

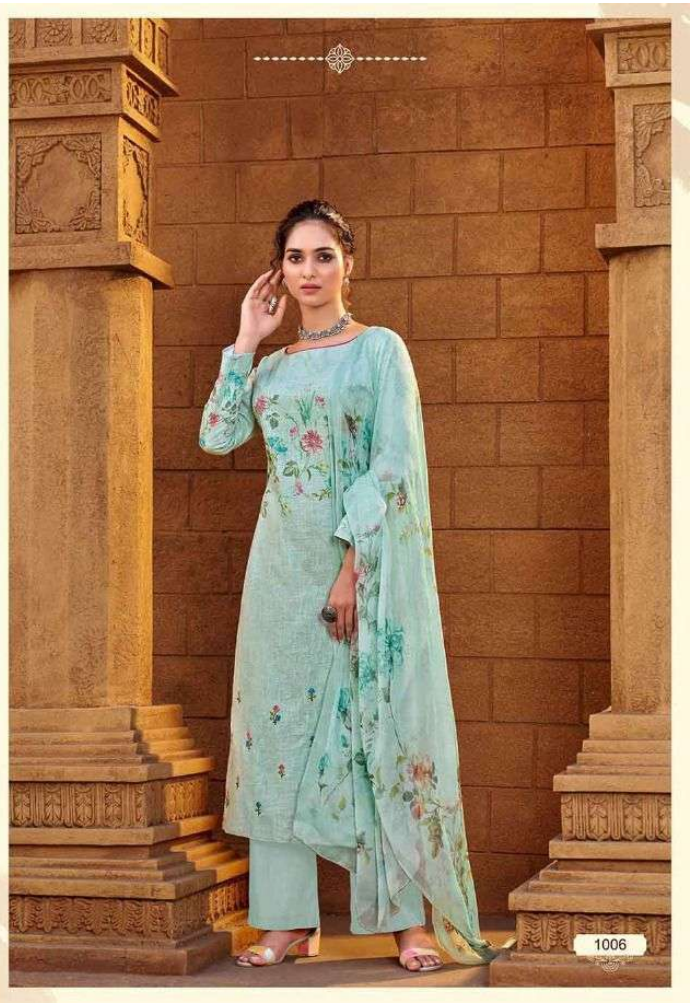
A woman with dark hair pulled back, wearing a light green shawl with a delicate floral pattern in shades of pink, blue, and green. She is standing in front of a large, weathered stone pillar with intricate carvings. The lighting is warm and directional, highlighting the texture of the shawl and the stone. The overall mood is elegant and traditional.

Perfectly wrapped

classic outfits with a twist of interesting detailing, subtle sheen, rich texture is perfectly wrapped in panache giving style a new meaning and refresh your wardrobe to Indian culture.



1008





Wonderful shades

richly of beautifying-create a trend with this soothing color and fascinating attire to enhance your beauty



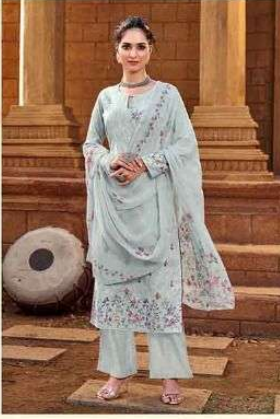




Wonderful shades

richly of beautifying-create a trend with this soothing color and fascinating attire to enhance your beauty





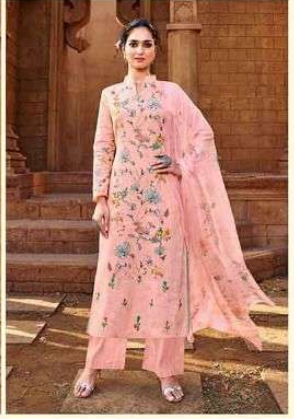
1001



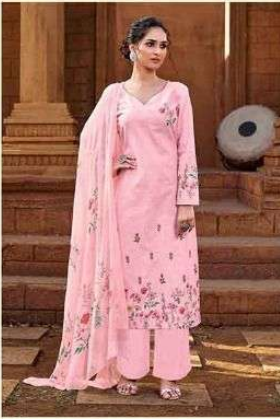
1002



1003



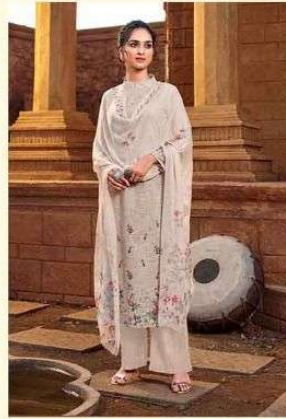
1004



1005



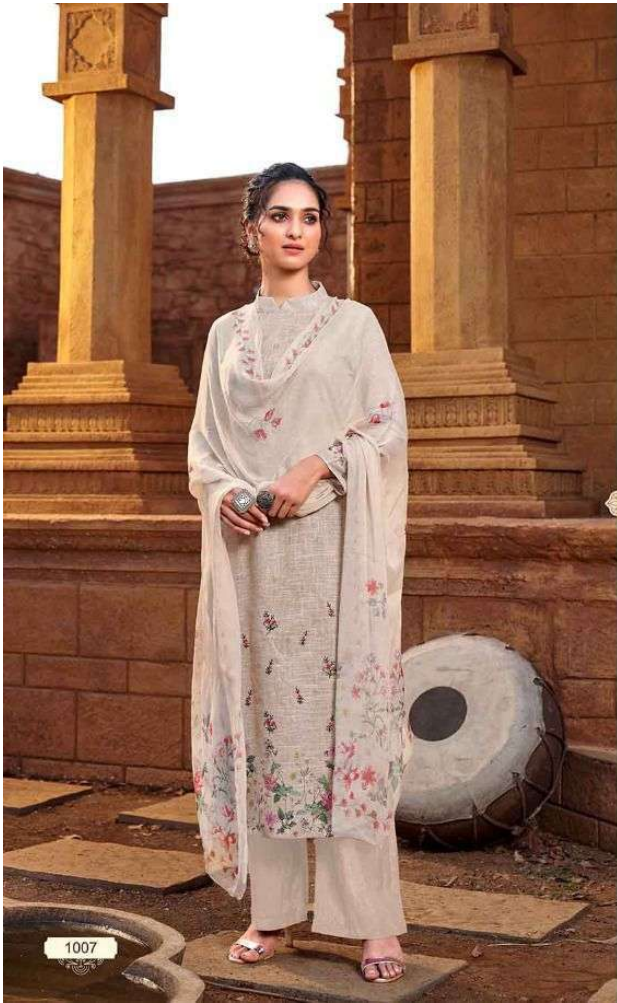
1006

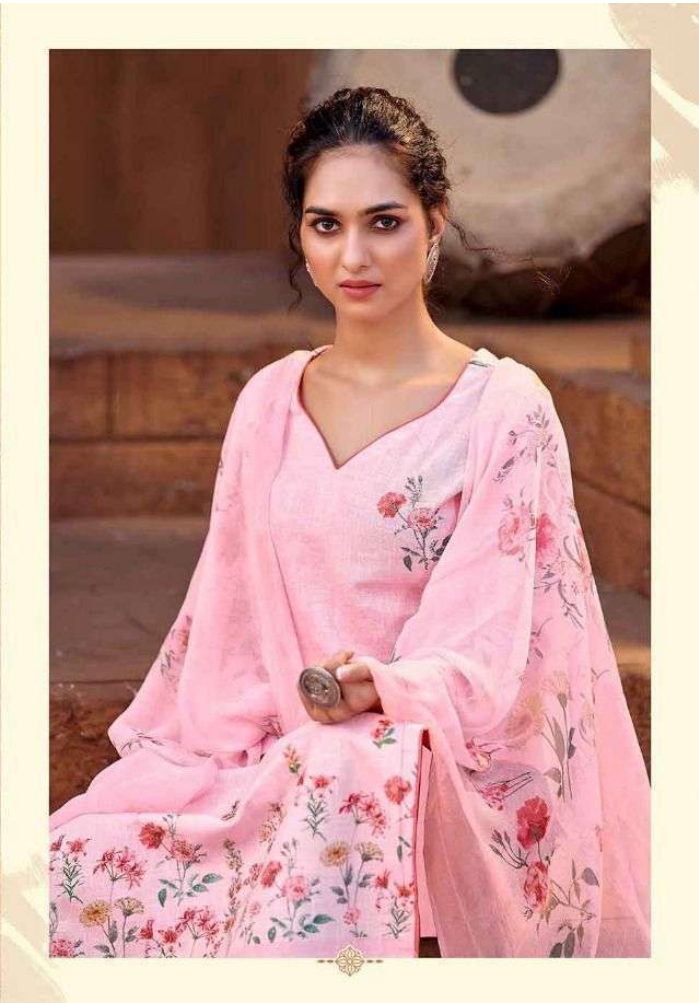


1007



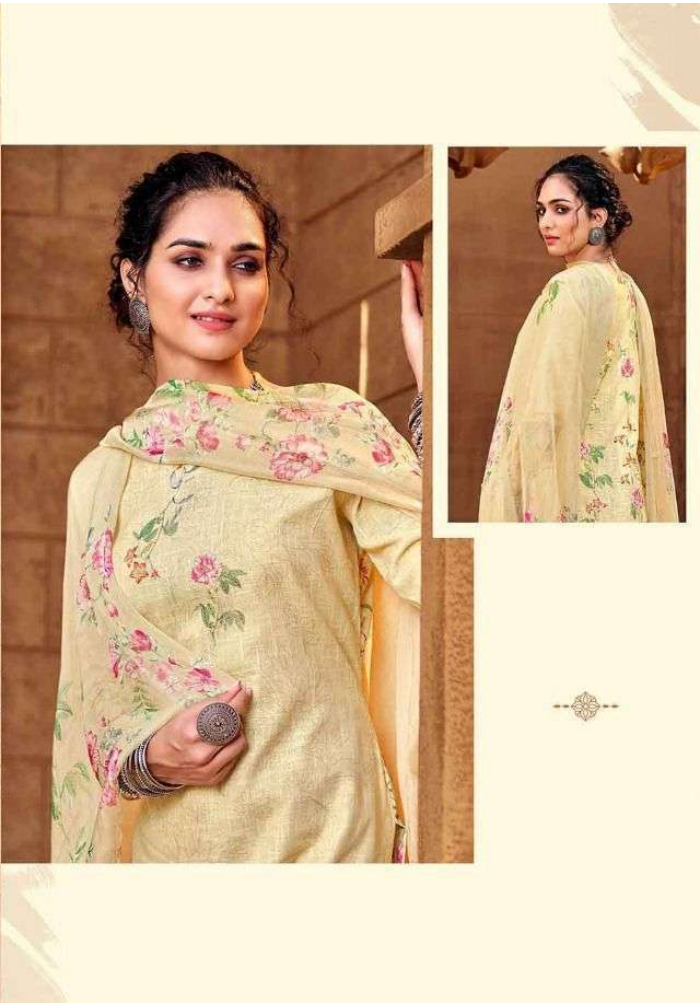
1008







1002





1003

