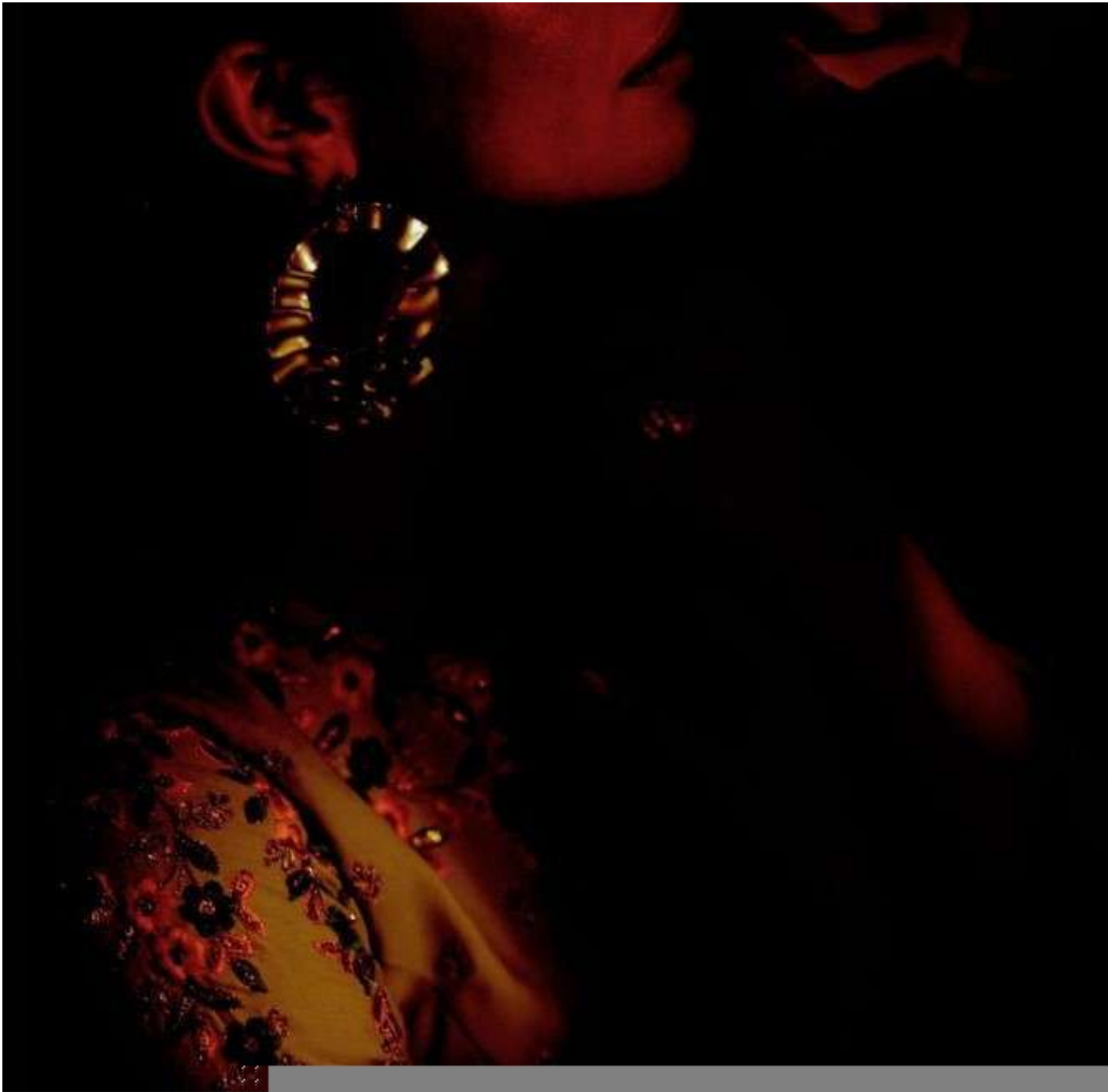


BREEZE

By

*nakkashi*<sup>®</sup>

ETHNIC PERFECTION AT ITS FINEST



# BREEZE

## GOWN (FULL STICH)

SR.NO.	D.NO	Gown	STICH	Dupatta	RATE
1	3087	Yellow Colour Modal Satin Fabrics With Mirror Work Embroidery	BUCRAM	Yellow Colour Chiffon fabrics	2445
2	3088	Pastel Green Colour Modal Satin Fabrics With Delicate Resham work	BUCRAM	Pastel Green Colour Chiffon Fabrics	2025
3	3089	Champagne Colour Modal Satin Fabrics,Blouse with Zari Embroidery	BUCRAM	Champagne Colour Chiffon Fabrics	2205
4	3090	Strong Arctic Blue Colour Modal Satin Fabrics With Sequin Work	BUCRAM	Strong Arctic Blue Colour Chiffon Fabrics	2625
5	3091	Festive Red Colour Modal Satin Fabric With Leather Sequin Work	BUCRAM	Festive Red Colour Chiffon Fabrics	2385
6	3092	Bottle Green Colour Modal Satin Fabrics With Sequin Texured Yoke & Resham Work Kalis	BUCRAM	Bottle Green Colour Chiffon Fabrics	2135
7	3093	Ybrownish Grey Colour Modal Satin Fabrics With Zari Work	BUCRAM	Ybrownish Grey Colour Chiffon Fabrics	2355
		TOTAL			16175/-
		AVERAGE			2310/-
NOTE :-		Gown Are Ready To wear For Size 40" But Can Be Altered Uptill 36" To 44" Length-56"			

nakkashi  
LIVING PERFECTION M. EL. HAKKI



NEUTRAL TERRITORY

Perfekte Schönheit ist nicht nur ein Wort, es ist ein Gefühl, das man empfinden muss, um es zu verstehen. Und das ist die Kunst der Schönheit.



YBROWNISH GREY COLOUR  
MODAL SATIN GOWN  
WITH ZARI WORK ON IT  
PAIRED WITH CHIFFON DUPATTA



nakkashi  
ETERNAL PERFECTION IN EVERY

*Thinly stretched, natural chise and a whiff of paper blue. All in all,  
just the perfect ensemble for the woman who finds value in extravagance.*

NEUTRAL TERRITORY #3093

nakkashi  
L'UNIQUE PAKISTANI FASHION

All those glittering gold on silver palette is all a lavish feel with your attire.  
Be a charmer with confident stride!



GLITTERING FLAIR #3092

With beauty in a wonderful garment, nothing, cannot be done but to bring the drama to drama.

*nakkashi*  
ETHEREAL PRODUCTIONS BY PUNJABI

CRIMSON TIDE



#3091



SIGNATURE EPISODE

*Flawless fabric, jaw-dropping styling, and timeless elegance are our signature style and present in every garment handcrafted under Nakkaashi.*

*nakkashi*  
FINDING PERFECTION IN EVERY THREAD



#3090

STRONG ARCTIC  
BLUE COLOUR  
MODAL SATIN  
GOWN WITH  
SEQUIN WORK  
ON IT PAIRED  
WITH MATCHING  
CHIFFON DUPATTA



And like you're stepping straight out a royal empire with your dream of looking like a princess is just accomplished!

nakkashi

REFLECTING YOU



CHAMPAGNE COLOUR  
MODAL SATIN  
BLOUSE WITH  
ZARI EMBROIDERY  
ON IT PAIRED WITH  
CHAMPAGNE COLOUR  
GHEFFON DUPATTA

#3089





Timeless Elegance

**nakkashi**  
CLASSIC FASHION FOR THE MODERN WOMAN

Photography: @Rishi, Makeup: @TheRoyalBeauty, Hair: @TheRoyalBeauty, Styling: @TheRoyalBeauty

PASTEL GREEN MODAL  
SATIN GOWN WITH DELICATE  
RESHAM WORK ON IT  
PAIRED WITH PASTEL  
GREEN CHIFFON DUPATTA

**#30SS**

nakkashi  
DESIGN. PRODUCTION. ARTISTRY.



*Startling Panache*

*A burst of fresh air comes alive in the form of this amber ensemble, which gives perfectly playful vibe with the new season.*

#3087



YELLOW MOOAL  
SATIN GOWN  
WITH MIRROR  
WORK EMBROIDERY  
ON IT. PAIRED WITH  
YELLOW CHIFFON DUPATTA.



REIMAGINING FASHION #3087



nakkashi

Every collection is a journey of imagination, sparked by a wonderful piece of fabric, a fine detail or a substantial idea.



#3087



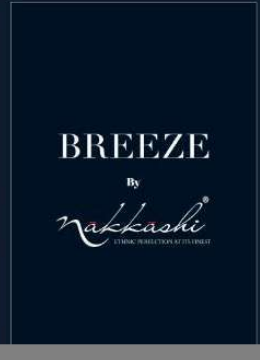
#3088



#3091



#3092



BREEZE  
By  
nakkashi  
LITMAY, BANGALORE, KARNATAKA



*nakkashi*  
FROM TRADITION TO MODERN

ETHEREAL ALLURE #3093

*Make an unforgettable impression with Nakkashi's sheer elegance, subtle hues and confident statement.  
Every perfectly crafted piece strikes the delicate balance between contemporary style and classic charm.*



Add some glittering gold in olive palette to add a little fest with your attire. Be a fashion walk confident model!

nakkashi  
FABRIC PRODUCTIONS BY FITZGERALD

GLITTERING FURIA

BOTTLE GREEN MODAL  
SATIN GOWN WITH SEQUIN  
TEXTURED YOKE AND  
RESHAM WORK KALIS  
PAIRED WITH MATCHING DUPATTA

#3092

nakkashi  
ESTABLISHED 1988

© 2018 Nakkaashi. All rights reserved. For more information, visit us at [www.nakkashi.com](http://www.nakkashi.com)

CRIMSON TIE

#3091

FESTIVE RED COLOUR  
MODAL SATIN GOWN HAVING  
LEATHER SOULI WORK  
ON IT PAIRED WITH  
MATCHING CHIFFON BLOUSE





nakkashi  
FASHION DESIGNER SINCE 1975

Whether you are a bride-to-be or a fashionista with a mind to break,  
this is the collection that will catch your fancy and stay in your 20th Anniversary collection.



A WOMAN'S DREAM #3091

nakkashi  
TRADITIONAL PRODUCTION OF PUNJAB



SIGNATURE EPISODE #3090

*Flowing fabrics, fuss-free styling, and timeless elegance are our signature style and present in every garment handcrafted under Nakkashi.*



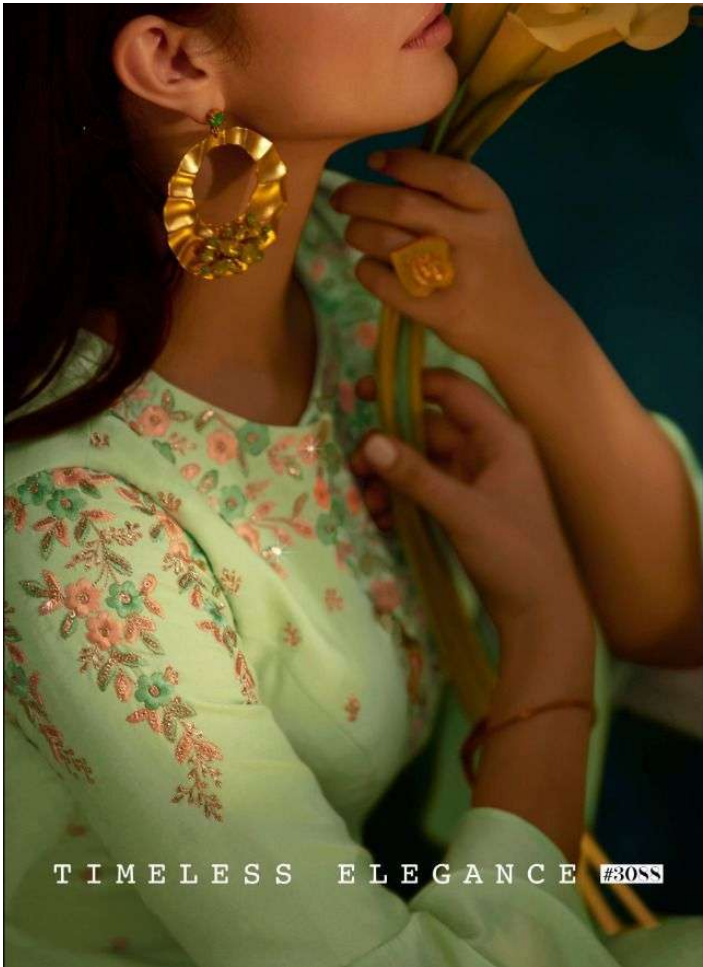
nakkashi  
FABRIC PERFECTION MEETS FUSION



REFLECTING YOU #30S9

Feel like you've stepped straight out a regal empire; and your dream of looking like a princess is just accomplished!





nakkashi®  
LUXURY FASHION DESIGNERS

*Embellished with floral embroidery,  
the exquisite mint green gets a makeover for the new vision of party wear.*

TIMELESS ELEGANCE #30SS



nakkashi

STARTLING  
PANACHE