

# ENGAGEMENT

READY TO WEAR

ALIZEH  
BOLD & BEAUTIFUL







QUALITY MATERIALS IN MAKING  
WEAVE FABRIC, WITH COLORED  
EMBROIDERY, CRYSTALS, STONES  
AND SEQUINS, TO ENHANCE  
THE BEAUTY OF THE OUTFIT.  
1060 D





ALIZEH  
BY ALI



1060 C



ALIZEH



1060 B





1060 A





1060 D



ALIZEH



ALIZEH  
BOLD & BEAUTIFUL



1060 A



1060 B



1060 C



1060 D



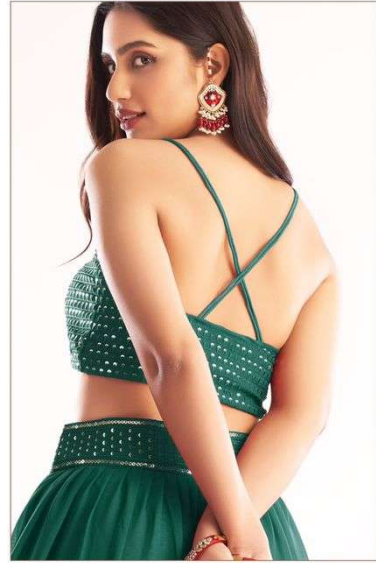
1060 E



ALIZEH  
BOLD & BEAUTIFUL



ALIZEH  
LUGLA MARRAKECH



1060 A



ALIZEH



FABRICATION IN BEST QUALITY  
CLOTHING MATERIALS IN INDIA  
MADE IN INDIA AND  
DESIGN BY ALIZEH  
CLOTHING MATERIALS IN INDIA  
DESIGN BY ALIZEH  
1060 E



## ALIZEH READYMADE LEHENGA SIZE GUIDE

### SIZE GUIDE

SIZE	BUST	WAIST	HIPS
L	40"	36"	44"
XL	42"	38"	46"

\*2 INCHES MARGIN PROVIDED IN BLOUSE

\*ALL SIZES IN INCHES

### DESCRIPTION:

#### FABRIC DESCRIPTION:

LEHENGA & CHOLI FABRIC- PURE GEORGETTE WITH DULL SANTOON INNER

DUPATTA FABRIC - NET

#### SIZE DESCRIPTION:

CHOLI LENGTH- 16 INCHES

CHOLI WITH PAD- YES

ZIPPER- SIDE ZIPPER PROVIDED

SLEEVES- YES, FABRIC PROVIDED 0.60 MTRS

LEHENGA LENGTH- 44 INCHES

LEHENGA FLAIR- 20 MTRS WITH GATHERING PATTERN

LEHENGA WITH CANCAN & CANVAS- YES

DUPATTA LENGTH-2.30 MTRS

DUPATTA WIDTH- 1 MTRS