



शुभकला
guldaata vol-12



शुभकला
guldaata vol-12

शुभकला bhkala



1991





शुभकला



1991

शुभकला



1992

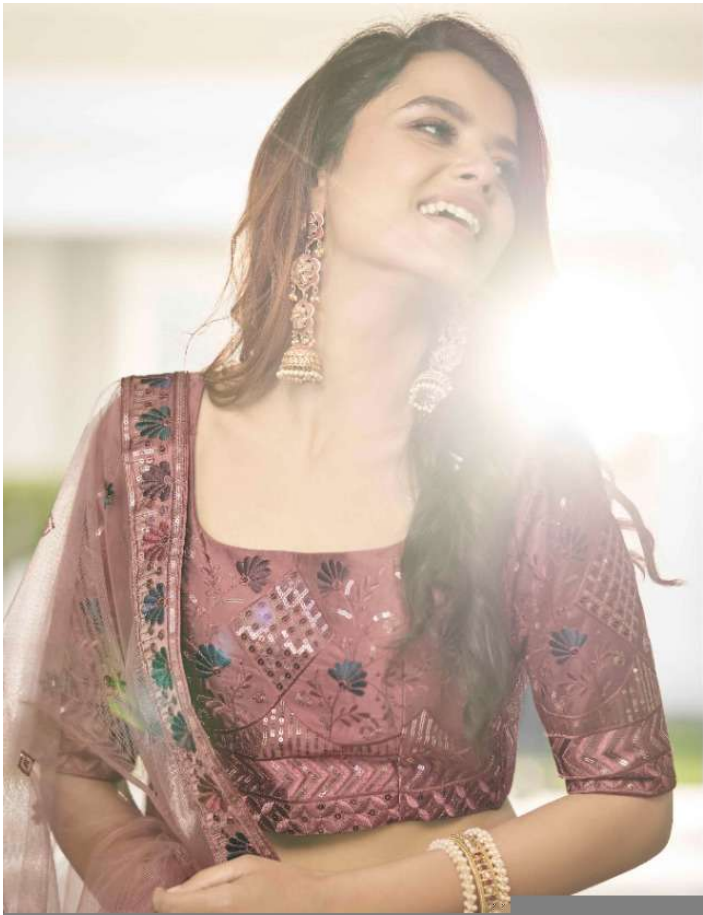




शुभकला

1992





शुभकला



1994

शुभकला



1994





शुभकला



1995







शुभकला bhkala





Guldasta vol-12

Design NO. (SKU)	Main Color	Lehenga Fabric	Choli Fabric	Dupatta Fabric	Size (Semi-Stitched)	Lehenga Work	Choli Work	Dupatta Work	Choli Length MTR	Lehenga Length INCH	Dupatta Length MTR	Weight
1991	White	Silk	Silk	NET	UPTO 42 BUST AND WAIST	Thread With Sequince Embroidered And All Over Stone Pasting Work	Thread With Sequince Embroidered And All Over Stone Pasting Work	Thread With Sequince Embroidered Work	1	42 INCH	2.30 MTR	2.5 KG
1992	Red, Green, Yellow	Silk	Silk	NET	UPTO 42 BUST AND WAIST	Thread With Sequince Embroidered Work	Thread With Sequince Embroidered Work	Thread With Sequince Embroidered Work	1	42 INCH	2.30 MTR	2.5 KG
1993	White	Silk	Silk	NET	UPTO 42 BUST AND WAIST	Thread With Sequince Embroidered Work	Thread With Sequince Embroidered Work	Thread With Sequince Embroidered Work	1	42 INCH	2.30 MTR	2.5 KG
1994	Rust Orange	Silk	Silk	NET	UPTO 42 BUST AND WAIST	Thread With Sequince Embroidered Work	Thread With Sequince Embroidered Work	Thread With Sequince Embroidered Work	1	42 INCH	2.30 MTR	2.5 KG
1995	Deep Pink	Silk	Silk	NET	UPTO 42 BUST AND WAIST	Thread With Sequince Embroidered And All Over Stone Pasting Work	Thread With Sequince Embroidered And All Over Stone Pasting Work	Thread With Sequince Embroidered Work	1	42 INCH	2.30 MTR	2.5 KG
1996	White	Silk	Silk	Silk	UPTO 42 BUST AND WAIST	Thread With Sequince Embroidered Work	Thread With Sequince Embroidered Work	Thread With Sequince Embroidered Work	1	42 INCH	2.30 MTR	2.5 KG

THIS BOOK / CATALOGUE / LOGO / ARE PROTECTED UNDER COPYRIGHT ACT.
 AN ILLEGAL/UNAUTHORIZED REPRINT, PUBLISHING, REPRODUCTION, DISTRIBUTION AND MODIFICATION OF ANY IMAGES, PHOTOGRAPHS AND PRODUCTS,
 TOTALLY OR IN PART FOR ANY PURPOSE, REASON OR CAUSE IS STRICTLY PROHIBITED AND PUNISHABLE UNDER LAW.

Abhikala

guldasta vol-12



1991



1992



1993













