

TANISHK
Fashion

ZEEVA



19001



19002



19003



19004



19005



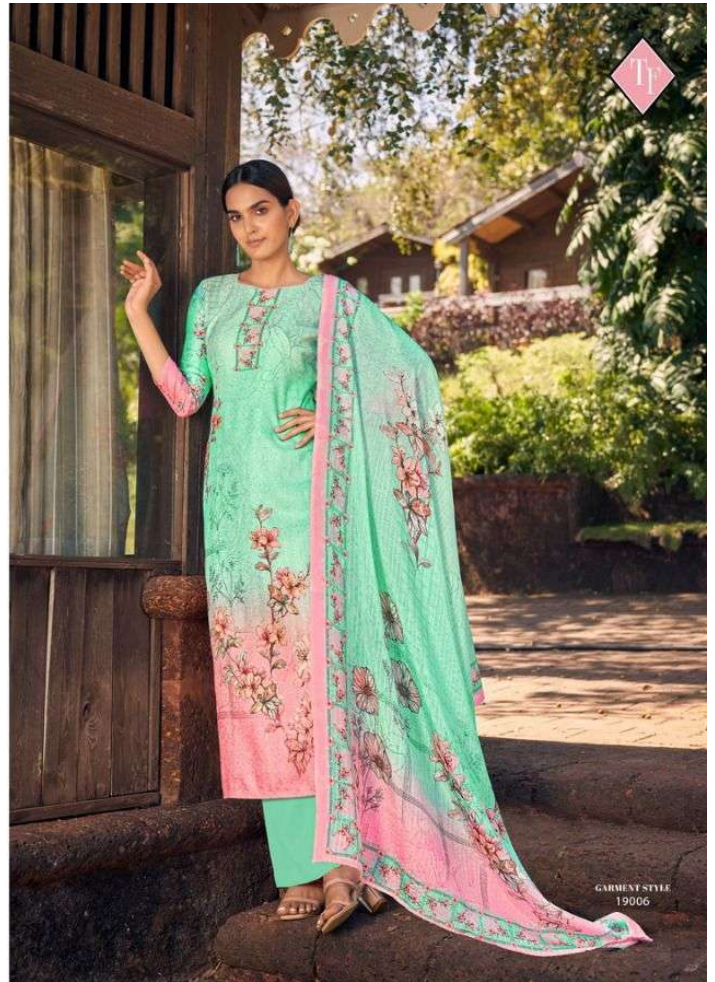
19006



TANISHK
Fashion

ZEEVA







GARMENT STYLE
19005





TF

GARMENT STYLE
19001

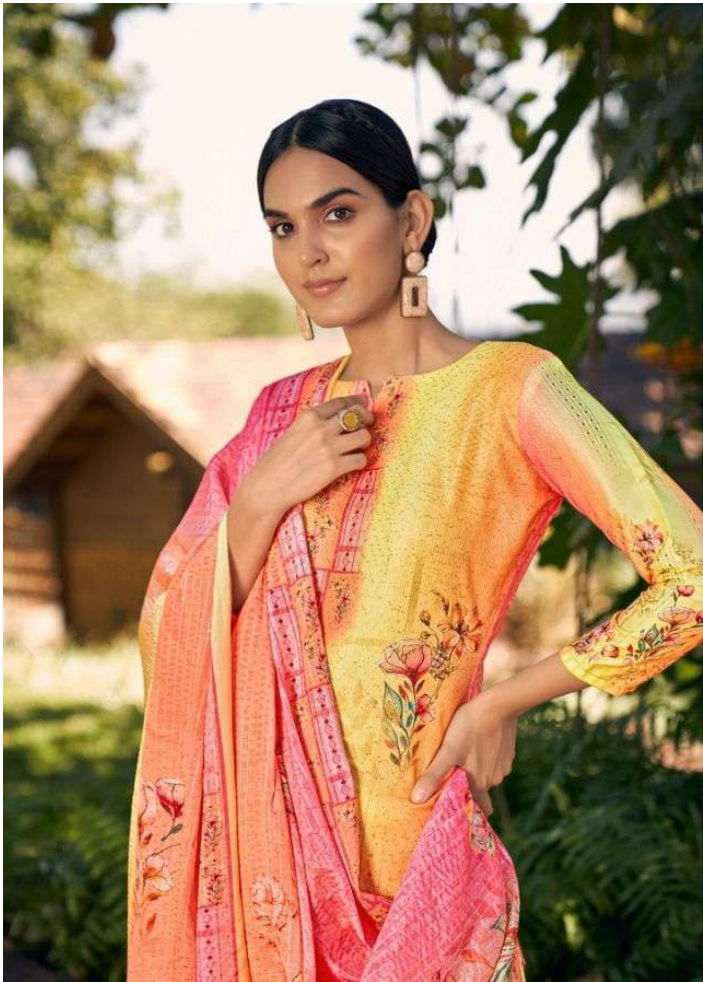






GARMENT STYLE
19002





HANTE
INTERPRETATIONS

Traditional Yet Modern
the perfect mix of modern and ethnic: all you have to do choose your favourite.

The graphic design features a woman's face and hands in a soft, ethereal style. A large, light-colored, abstract shape, resembling a stylized 'H' or a traditional motif, is overlaid on the image. A small red diamond logo with the letters 'TF' is positioned near the top center. The text 'HANTE INTERPRETATIONS' is written in a bold, serif font, and a tagline is at the bottom.

PRESENTING TO YOU OUR NEW CATALOGUE

Zeeva

FROM RSF FASHIONS,

+ TOP :- +
JAAM CROCHET WITH
DIGITAL

+ BOTTOM :- +
PURE COTTON

+ DUPATTA :- +
PURE MUSLIN DIGITAL
CROCHET

