



The image features a woman standing in a richly decorated room, likely a palace or a traditional Pakistani home. She is wearing a light pink, long-sleeved dress with intricate floral embroidery and a matching light green shawl with a scalloped edge. She is adorned with traditional jewelry, including a large, ornate headpiece, a necklace, and bangles. She is holding her hands together in front of her chest. The room has a high ceiling with a large, ornate chandelier. The walls are decorated with intricate patterns, and there is a large, ornate pillar to the left of the woman. The floor is covered with a patterned rug. The overall atmosphere is one of elegance and traditional beauty.

**Epic®**  
**Rosemeen®**  
**Guzarish**  
VOL-3



The image features a woman standing in a richly decorated room, likely a palace or a traditional Pakistani home. She is wearing a light pink, long-sleeved dress with intricate floral embroidery and a matching light green shawl with a scalloped edge. She is adorned with traditional jewelry, including a large, ornate headpiece, a necklace, and bangles. She is holding her hands together in front of her chest. The room has a high ceiling with a large, ornate chandelier. The walls are decorated with intricate patterns, and there is a large, ornate pillar on the left. The floor is covered with a patterned rug. The overall atmosphere is one of elegance and tradition.

**Epic®**  
**Rosemeen®**  
**Guzarish**  
VOL-3

**Fepic®**  
**Rosemeen®**  
**Guzarish**  
VOL-3



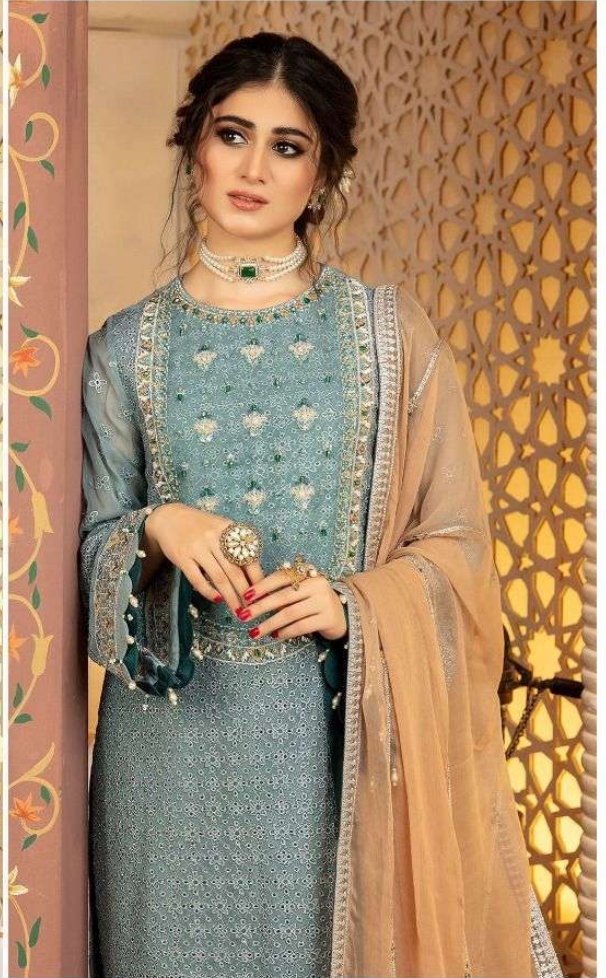


**Epic®**



**Rosemeen®**  
**Guzarish**  
VOL-3

**Epic®**



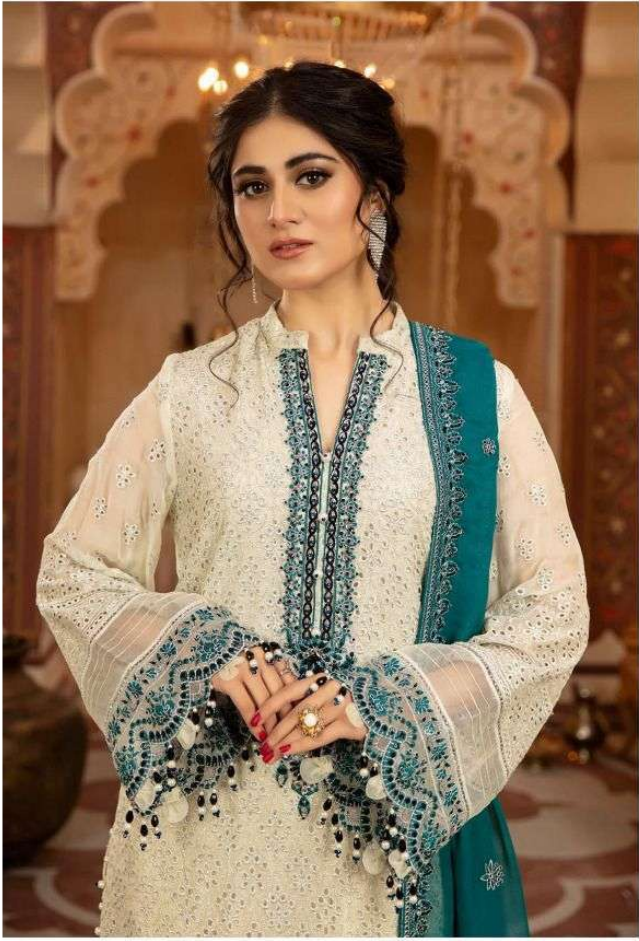
**WASHING INSTRUCTIONS**

DO NOT USE ANY TYPE OF BLEACH OR STAIN REMOVING CHEMICALS  
BEFORE CUTTING / STITCHING. FABRIC SHOULD BE SOAKED IN WATER  
( ALL COMPONENTS SEPARATELY ) FOR 15 MINUTES  
DO NOT KEEP WET FABRIC IN TWISTED FORM IN ORDER TO AVOID COPY MARKS |  
WASH COLOURED AND WHITE FABRICS SEPARATELY  
IRON CLOTHES AT MODERATE TEMPERATURE | DO NOT DRY FABRIC IN DIRECT SUNLIGHT  
( EXTRA LACES, HANGINGS AND ACCESSORIES ARE NOT INCLUDED )

**Rosemeen®**  
**Guzarish**  
VOL-3  
D.NO.91039



**Fepic®**



**WASHING INSTRUCTIONS**

DO NOT USE ANY TYPE OF BLEACH OR STAIN REMOVING CHEMICALS  
BEFORE CUTTING / STITCHING, FABRIC SHOULD BE SOAKED IN WATER  
( ALL COMPONENTS SEPARATELY ) FOR 15 MINUTES  
DO NOT KEEP WET FABRIC IN TWISTED FROM IN ORDER TO AVOID COPY MARKS |  
WASH COLOURED AND WHITE FABRICS SEPARATELY  
IRON CLOTHES AT MODERATE TEMPERATURE | DO NOT DRY FABRIC IN DIRECT SUNLIGHT  
( EXTRA LACES, HANGINGS AND ACCESSORIES ARE NOT INCLUDED )

**Rosemeen®**  
**Guzarish**  
VOL-3  
D.NO.91036



**Fepic®**



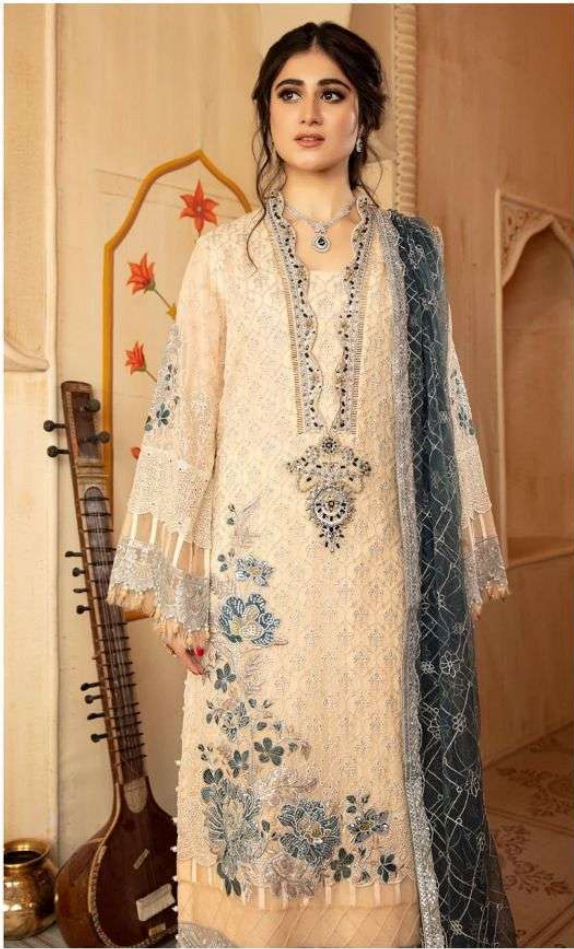
**WASHING INSTRUCTIONS**

DO NOT USE ANY TYPE OF BLEACH OR STAIN REMOVING CHEMICALS  
BEFORE CUTTING / STITCHING, FABRIC SHOULD BE SOAKED IN WATER  
( ALL COMPONENTS SEPARATELY ) FOR 15 MINUTES  
DO NOT KEEP WET FABRIC IN TWISTED FORM IN ORDER TO AVOID COPY MARKS |  
WASH COLOURED AND WHITE FABRICS SEPARATELY  
IRON CLOTHES AT MODERATE TEMPERATURE | DO NOT DRY FABRIC IN DIRECT SUNLIGHT  
( EXTRA LACES, HANGINGS AND ACCESSORIES ARE NOT INCLUDED )

**Rosemeen®**  
**Guzarish**  
VOL-3  
D.NO.91037



**Fepic®**



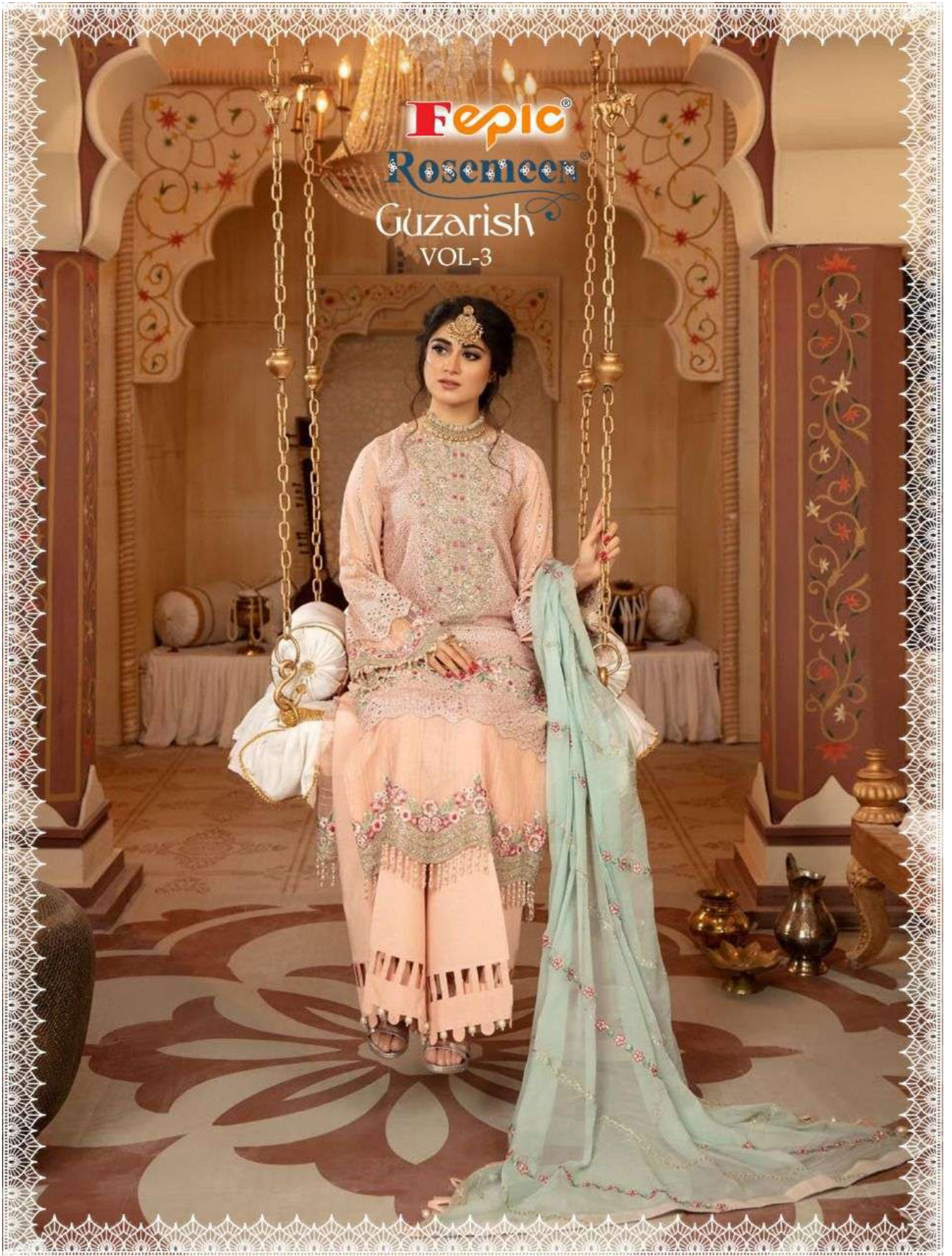
**WASHING INSTRUCTIONS**

DO NOT USE ANY TYPE OF BLEACH OR STAIN REMOVING CHEMICALS  
BEFORE CUTTING / STITCHING, FABRIC SHOULD BE SOAKED IN WATER  
( ALL COMPONENTS SEPARATELY ) FOR 15 MINUTES  
DO NOT KEEP WET FABRIC IN TWISTED FORM IN ORDER TO AVOID COPY MARKS |  
WASH COLOURED AND WHITE FABRICS SEPARATELY  
IRON CLOTHES AT MODERATE TEMPERATURE | DO NOT DRY FABRIC IN DIRECT SUNLIGHT  
( EXTRA LACES, HANGINGS AND ACCESSORIES ARE NOT INCLUDED )

**Rosemeen®**  
**Guzarish**  
VOL-3  
D.NO.91038



**Epic**  
**Rosemeen**  
*Guzarish*  
VOL-3



**Fepic®**  
**Rosemeen®**  
**Guzarish**  
VOL-3





D.NO.91036



D.NO.91037



D.NO.91038



D.NO.91039

**Fepic**

**Rosemeen**  
Guzarish VOL-3

f: Fb.com/Fepic11 i: \_Fepic

