



Ramsha®





Ramsha™



#R-107

TOP- GEORGET WITH HEAVY EMBROIDERY  
BOTTOM- DULL SNTON  
DUPATTA - NET WITH HEAVY EMBROIDERY





Ramsha™



#R-107

TOP- GEORGET WITH HEAVY EMBROIDERY  
BOTTOM- DULL SNTON  
DUPATTA - NET WITH HEAVY EMBROIDERY





Ramsha™



#R-107

TOP- GEORGET WITH HEAVY EMBROIDERY  
BOTTOM- DULL SNTON  
DUPATTA - NET WITH HEAVY EMBROIDERY





Ramsha™



#R-107

TOP- GEORGET WITH HEAVY EMBROIDERY  
BOTTOM- DULL SNTON  
DUPATTA - NET WITH HEAVY EMBROIDERY





Ramsha®



#R-202

TOP- BUTTER FLY NET WITH HEAVY EMBROIDERY  
BOTTOM- DULL SANTOON  
DUPATTA - NET WITH HEAVY EMBROIDERY





Ramsha®



#R-234

TOP- FOX GEORGET WITH HEAVY EMBROIDERY  
BOTTOM- DULL SANTOON  
DUPATTA - PURE JEQUARD DUPPATA





  
Ramsha®



#R-246

TOP- GEORGET WITH HEAVY EMBROIDERY  
BOTTOM- DULL SANTOON  
DUPATTA - CHIFFON DIGITAL PRINT





Ramsha®



#R-260

TOP- BUTTER FLY NET WITH HEAVY EMBROIDERY  
BOTTOM- DULL SANTOON  
DUPATTA - NET WITH HEAVY EMBROIDERY



#R-411



**TOP-** FOX GEORGETTE WITH HEAVY EMBROIDERY  
**BOTTOM-** SANTOON  
**DUPATTA -** NET WITH EMBROIDERY

- Ⓟ DRY CLEAN ONLY.
- ✗ DO NOT USE ANY BLEACH OR STAIN REMOVING CHEMICAL.
- ☎ IRON THE FABRIC AT MODERATE TEMPERATURE.



# AFREEN - B



**TOP-** FOX GEORGET WITH HEAVY EMBROIDERY  
**BOTTOM-** DULL SANTOON  
**DUPATTA -** GEORGET WITH HEAVY EMBROIDERY

Ⓟ DRY CLEAN ONLY.  
ⓧ DO NOT USE ANY BLEACH OR STAIN REMOVING CHEMICAL.  
Ⓜ IRON THE FABRIC AT MODERATE TEMPERATURE.



# AFREEN - G



TOP- FOX GEORGET WITH HEAVY EMBROIDERY  
BOTTOM- DULL SANTOON  
DUPATTA - GEORGET WITH HEAVY EMBROIDERY

Ⓟ DRY CLEAN ONLY.  
ⓧ DO NOT USE ANY BLEACH OR STAIN REMOVING CHEMICAL.  
☎ IRON THE FABRIC AT MODERATE TEMPERATURE.



# AFREEN - H



TOP- FOX GEORGET WITH HEAVY EMBROIDERY  
BOTTOM- DULL SANTOON  
DUPATTA - GEORGET WITH HEAVY EMBROIDERY

Ⓟ DRY CLEAN ONLY.  
ⓧ DO NOT USE ANY BLEACH OR STAIN REMOVING CHEMICAL.  
☎ IRON THE FABRIC AT MODERATE TEMPERATURE.



# AFREEN - F



TOP- FOX GEORGET WITH HEAVY EMBROIDERY  
BOTTOM- DULL SANTOON  
DUPATTA - GEORGET WITH HEAVY EMBROIDERY

Ⓟ DRY CLEAN ONLY.  
ⓧ DO NOT USE ANY BLEACH OR STAIN REMOVING CHEMICAL.  
Ⓜ IRON THE FABRIC AT MODERATE TEMPERATURE.





# AFREEN - I

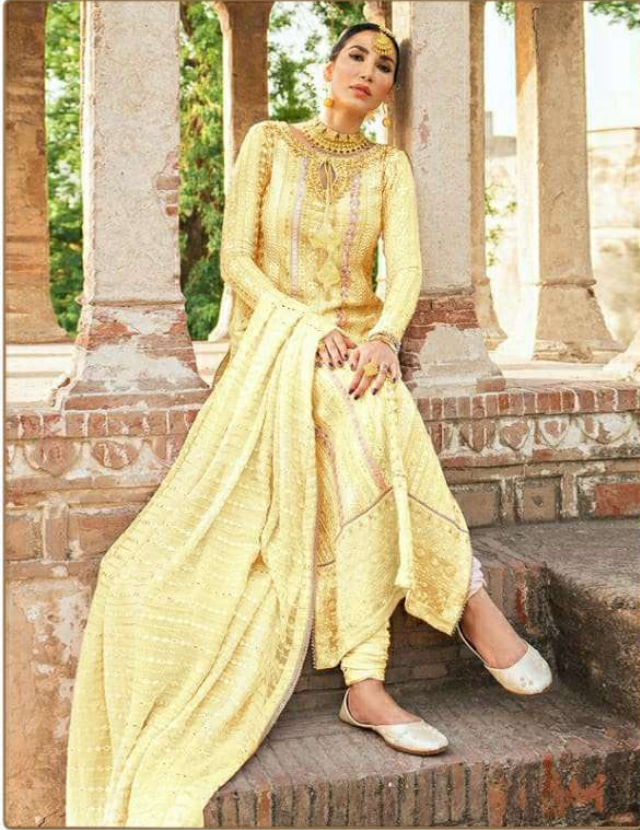


TOP- FOX GEORGET WITH HEAVY EMBROIDERY  
BOTTOM- DULL SANTOON  
DUPATTA - GEORGET WITH HEAVY EMBROIDERY

Ⓟ DRY CLEAN ONLY.  
ⓧ DO NOT USE ANY BLEACH OR STAIN REMOVING CHEMICAL.  
☎ IRON THE FABRIC AT MODERATE TEMPERATURE.



# AFREEN - D



TOP- FOX GEORGET WITH HEAVY EMBROIDERY  
BOTTOM- DULL SANTOON  
DUPATTA - GEORGET WITH HEAVY EMBROIDERY

Ⓟ DRY CLEAN ONLY.  
ⓧ DO NOT USE ANY BLEACH OR STAIN REMOVING CHEMICAL.  
🧊 IRON THE FABRIC AT MODERATE TEMPERATURE.





**# AFREEN - A**



**TOP-** FOX GEORGET WITH HEAVY EMBROIDERY  
**BOTTOM-** DULL SANTOON  
**DUPATTA -** GEORGET WITH HEAVY EMBROIDERY

Ⓟ DRY CLEAN ONLY.  
ⓧ DO NOT USE ANY BLEACH OR STAIN REMOVING CHEMICAL.  
☎ IRON THE FABRIC AT MODERATE TEMPERATURE.



#CHIKANKARI-01-I



**TOP-** FOX GEORGETTE WITH HEAVY EMBROIDERY  
**BOTTOM-** DULL SANTOON  
**DUPATTA -** CHINON LESS WORK

- Ⓟ DRY CLEAN ONLY.
- ✘ DO NOT USE ANY BLEACH OR STAIN REMOVING CHEMICAL.
- ☎ IRON THE FABRIC AT MODERATE TEMPERATURE.





#CHIKANKARI-01-J



TOP- FOX GEORGETTE WITH HEAVY EMBROIDERY  
BOTTOM- DULL SANTOON  
DUPATTA - CHINON LESS WORK

- Ⓟ DRY CLEAN ONLY.
- ✘ DO NOT USE ANY BLEACH OR STAIN REMOVING CHEMICAL.
- ☎ IRON THE FABRIC AT MODERATE TEMPERATURE.





#CHIKANKARI-01-K



TOP- FOX GEORGETTE WITH HEAVY EMBROIDERY  
BOTTOM- DULL SANTOON  
DUPATTA - CHINON LESS WORK



Ⓟ DRY CLEAN ONLY.  
ⓧ DO NOT USE ANY BLEACH OR STAIN REMOVING CHEMICAL.  
Ⓜ IRON THE FABRIC AT MODERATE TEMPERATURE.



#CHIKANKARI-01-L



TOP- FOX GEORGETTE WITH HEAVY EMBROIDERY  
BOTTOM- DULL SANTOON  
DUPATTA - CHINON LESS WORK

Ⓟ DRY CLEAN ONLY.  
✘ DO NOT USE ANY BLEACH OR STAIN REMOVING CHEMICAL.  
☎ IRON THE FABRIC AT MODERATE TEMPERATURE.





#CHIKANKARI-01-A



TOP- FOX GEORGETTE WITH HEAVY EMBROIDERY  
BOTTOM- DULL SANTOON  
DUPATTA - CHINON LESS WORK

- Ⓟ DRY CLEAN ONLY.
- ✂ DO NOT USE ANY BLEACH OR STAIN REMOVING CHEMICAL.
- ☎ IRON THE FABRIC AT MODERATE TEMPERATURE.





#CHIKANKARI-01-C



TOP- FOX GEORGETTE WITH HEAVY EMBROIDERY  
BOTTOM- DULL SANTOON  
DUPATTA - CHINON LESS WORK



Ⓟ DRY CLEAN ONLY.  
ⓧ DO NOT USE ANY BLEACH OR STAIN REMOVING CHEMICAL  
Ⓢ IRON THE FABRIC AT



#CHIKANKARI-01-D



**TOP-** FOX GEORGETTE WITH HEAVY EMBROIDERY  
**BOTTOM-** DULL SANTOON  
**DUPATTA -** CHINON LESS WORK

- Ⓟ DRY CLEAN ONLY.
- ✗ DO NOT USE ANY BLEACH OR STAIN REMOVING CHEMICAL.
- ☎ IRON THE FABRIC AT MODERATE TEMPERATURE.







#CHIKANKARI-01-B



TOP- FOX GEORGETTE WITH HEAVY EMBROIDERY  
BOTTOM- DULL SANTOON  
DUPATTA - CHINON LESS WORK

- Ⓟ DRY CLEAN ONLY.
- ✗ DO NOT USE ANY BLEACH OR STAIN REMOVING CHEMICAL.
- ☎ IRON THE FABRIC AT MODERATE TEMPERATURE.





#CHIKANKARI-02



TOP- FOX GEORGETTE WITH HEAVY EMBROIDERY  
BOTTOM- DULL SANTOON  
DUPATTA - NAZMEEN

Ⓟ DRY CLEAN ONLY.  
ⓧ DO NOT USE ANY BLEACH OR STAIN REMOVING CHEMICAL.  
☎ IRON THE FABRIC AT MODERATE TEMPERATURE.



#CHIKANKARI-03-B



TOP- FOX GEORGETTE WITH HEAVY EMBROIDERY  
BOTTOM- DULL SANTOON  
DUPATTA - CHINON EMBROIDERY

- Ⓟ DRY CLEAN ONLY.
- ✘ DO NOT USE ANY BLEACH OR STAIN REMOVING CHEMICAL.
- ☎ IRON THE FABRIC AT MODERATE TEMPERATURE.





#CHIKANKARI-03-C



TOP- FOX GEORGETTE WITH HEAVY EMBROIDERY  
BOTTOM- DULL SANTOON  
DUPATTA - CHINON EMBROIDERY

- Ⓟ DRY CLEAN ONLY.
- ✘ DO NOT USE ANY BLEACH OR STAIN REMOVING CHEMICAL.
- ☎ IRON THE FABRIC AT MODERATE TEMPERATURE.





#CHIKANKARI-03-D



TOP- FOX GEORGETTE WITH HEAVY EMBROIDERY  
BOTTOM- DULL SANTOON  
DUPATTA - CHINON EMBROIDERY

- Ⓟ DRY CLEAN ONLY.
- ✘ DO NOT USE ANY BLEACH OR STAIN REMOVING CHEMICAL.
- ☎ IRON THE FABRIC AT MODERATE TEMPERATURE.





#CHIKANKARI-03-E



TOP- FOX GEORGETTE WITH HEAVY EMBROIDERY  
BOTTOM- DULL SANTOON  
DUPATTA - CHINON EMBROIDERY

- Ⓟ DRY CLEAN ONLY.
- ✗ DO NOT USE ANY BLEACH OR STAIN REMOVING CHEMICAL.
- ☎ IRON THE FABRIC AT MODERATE TEMPERATURE.





#CHIKANKARI-04



TOP- FOX GEORGETTE WITH HEAVY EMBROIDERY  
BOTTOM- DULL SANTOON  
DUPATTA - CHINON EMBROIDERY

- Ⓟ DRY CLEAN ONLY.
- ✂ DO NOT USE ANY BLEACH OR STAIN REMOVING CHEMICAL.
- ☎ IRON THE FABRIC AT MODERATE TEMPERATURE.





#CHIKANKARI-04-B



TOP- FOX GEORGETTE WITH HEAVY EMBROIDERY  
BOTTOM- DULL SANTOON  
DUPATTA - CHINON EMBROIDERY



Ⓟ DRY CLEAN ONLY.  
ⓧ DO NOT USE ANY BLEACH OR STAIN REMOVING CHEMICAL.  
☎ IRON THE FABRIC AT MODERATE TEMPERATURE.





#CHIKANKARI-04-C



TOP- FOX GEORGETTE WITH HEAVY EMBROIDERY  
BOTTOM- DULL SANTOON  
DUPATTA - CHINON EMBROIDERY



Ⓟ DRY CLEAN ONLY.  
ⓧ DO NOT USE ANY BLEACH OR STAIN REMOVING CHEMICAL.  
Ⓛ IRON THE FABRIC AT MODERATE TEMPERATURE.



#CHIKANKARI-04-D



TOP- FOX GEORGETTE WITH HEAVY EMBROIDERY  
BOTTOM- DULL SANTOON  
DUPATTA - CHINON EMBROIDERY



Ⓟ DRY CLEAN ONLY.  
ⓧ DO NOT USE ANY BLEACH OR STAIN REMOVING CHEMICAL.  
☎ IRON THE FABRIC AT MODERATE TEMPERATURE.



#CHIKANKARI-04-E



TOP- FOX GEORGETTE WITH HEAVY EMBROIDERY  
BOTTOM- DULL SANTOON  
DUPATTA - CHINON EMBROIDERY



Ⓟ DRY CLEAN ONLY.  
ⓧ DO NOT USE ANY BLEACH OR STAIN REMOVING CHEMICAL.  
Ⓡ IRON THE FABRIC AT MODERATE TEMPERATURE.



#CHIKANKARI-06



TOP- FOX GEORGETTE WITH HEAVY EMBROIDERY  
BOTTOM- DULL SANTOON  
DUPATTA - CHINON EMBROIDERY



Ⓟ DRY CLEAN ONLY.  
ⓧ DO NOT USE ANY BLEACH OR STAIN REMOVING CHEMICAL.  
☎ IRON THE FABRIC AT MODERATE TEMPERATURE.

Ramsha®



#DILRUBA-A

TOP- GEORGET WITH HEAVY EMBROIDERY

BOTTOM- DULL SANTOON

DUPATTA - GEORGET HEAVY EMBROIDERY WITH DIAMOND



Ramsha®

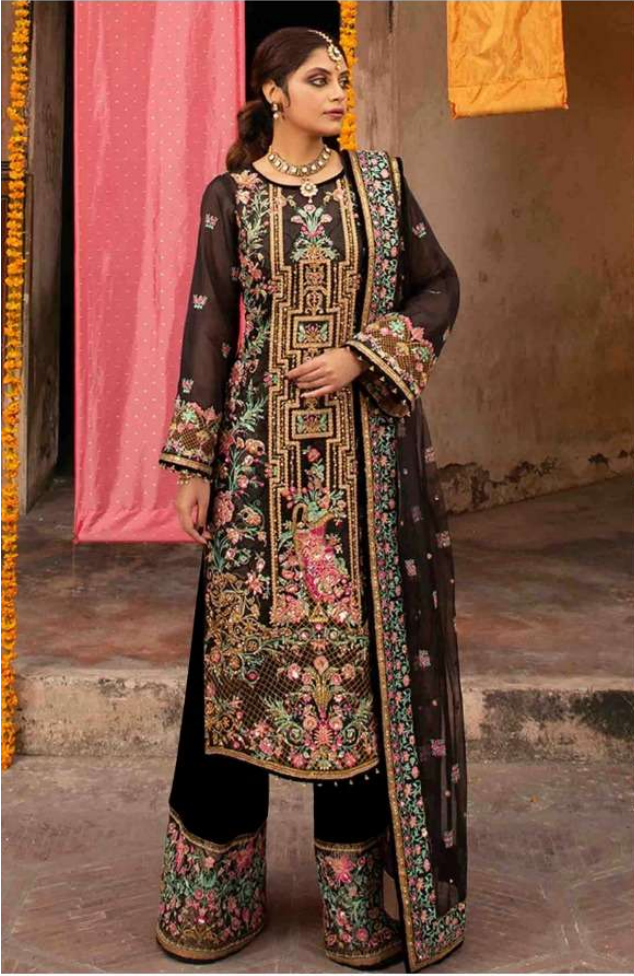


#DILRUBA-D

TOP- GEORGET WITH HEAVY EMBROIDERY  
BOTTOM- DULL SANTOON  
DUPATTA - GEORGET HEAVY EMBROIDERY WITH DIAMOND



Ramsha®



#R-277

TOP- FOX GEORGET WITH HEAVY EMBROIDERY  
BOTTOM- DULL SANTOON WITH PATCH WORK  
DUPATTA - NET WITH EMBROIDERY WORK

Ramsha  
VOL-5



Good Look  
#R-282





Ramsha®



#R-305-B

TOP- FOX GEORGET WITH HEAVY EMBROIDERY  
BOTTOM- DULL SANTOON  
DUPATTA - NAZMEEN WITH HEAVY EMBROIDERY

Ramsha®



#R-305-D

TOP- FOX GEORGET WITH HEAVY EMBROIDERY  
BOTTOM- DULL SANTOON  
DUPATTA - NAZMEEN WITH HEAVY EMBROIDERY



#R-381-B



TOP- FOX GEORGET WITH HEAVY EMBROIDERY  
BOTTOM- SANTOON  
DUPATTA - BUTTERFLY NET HEAVY EMBROIDERY

Ⓟ DRY CLEAN ONLY.  
ⓧ DO NOT USE ANY BLEACH OR STAIN REMOVING CHEMICAL.  
☎ IRON THE FABRIC AT MODERATE TEMPERATURE.



#R-404



TOP- CAMBRIC WITH HEAVY EMBROIDERY  
BOTTOM- SOLID COTTON  
DUPATTA - NAZMEEN EMBROERD

Ⓟ DRY CLEAN ONLY.  
ⓧ DO NOT USE ANY BLEACH OR STAIN REMOVING CHEMICAL.  
Ⓛ IRON THE FABRIC AT MODERATE TEMPERATURE.



#R-403



**TOP**- CAMBRIC WITH HEAVY EMBROIDERY  
**BOTTOM**- SOLID COTTON  
**DUPATTA** - NAZMEEN EMBROERD

Ⓟ DRY CLEAN ONLY.  
ⓧ DO NOT USE ANY BLEACH OR STAIN REMOVING CHEMICAL.  
Ⓡ IRON THE FABRIC AT MODERATE TEMPERATURE.



  
Ramsha®



MARIYA.B-A

TOP- HEAVY EMBRODERD ORGANJA & NET  
BOTTOM- SANTOON  
DUPATTA - EMBRODERD NET



Ramsha®



MARIYA.B-B

TOP- HEAVY EMBRODERD ORGANJA & NET

BOTTOM- SANTOON

DUPATTA - EMBRODERD NET



Ramsha®



MARIYA.B-D

TOP- HEAVY EMBRODERD ORGANJA & NET  
BOTTOM- SANTOON  
DUPATTA - EMBRODERD NET







Ramsha®



#PARI-D

TOP- BUTTER FLY NET WITH HEAVY EMBROIDERY  
BOTTOM- DULL SANTOON  
DUPATTA - NET WITH HEAVY EMBROIDERY





#PARI-C

TOP- BUTTER FLY NET WITH HEAVY EMBROIDERY  
BOTTOM- DULL SANTOON  
DUPATTA - NET WITH HEAVY EMBROIDERY

