

kashvi[®]
creation

Shamara



A woman is seen from behind, standing in a large, arched doorway. She is wearing a vibrant pink saree with a gold border and a matching pink blouse. Her hair is styled in a long, dark braid with a gold tassel. She is looking out into a dining room where a round wooden table is set with a chandelier hanging above it. The room has a warm, beige color palette and large windows. The text 'kashvi creation' is overlaid in the upper center of the image.

kashvi[®]
creation

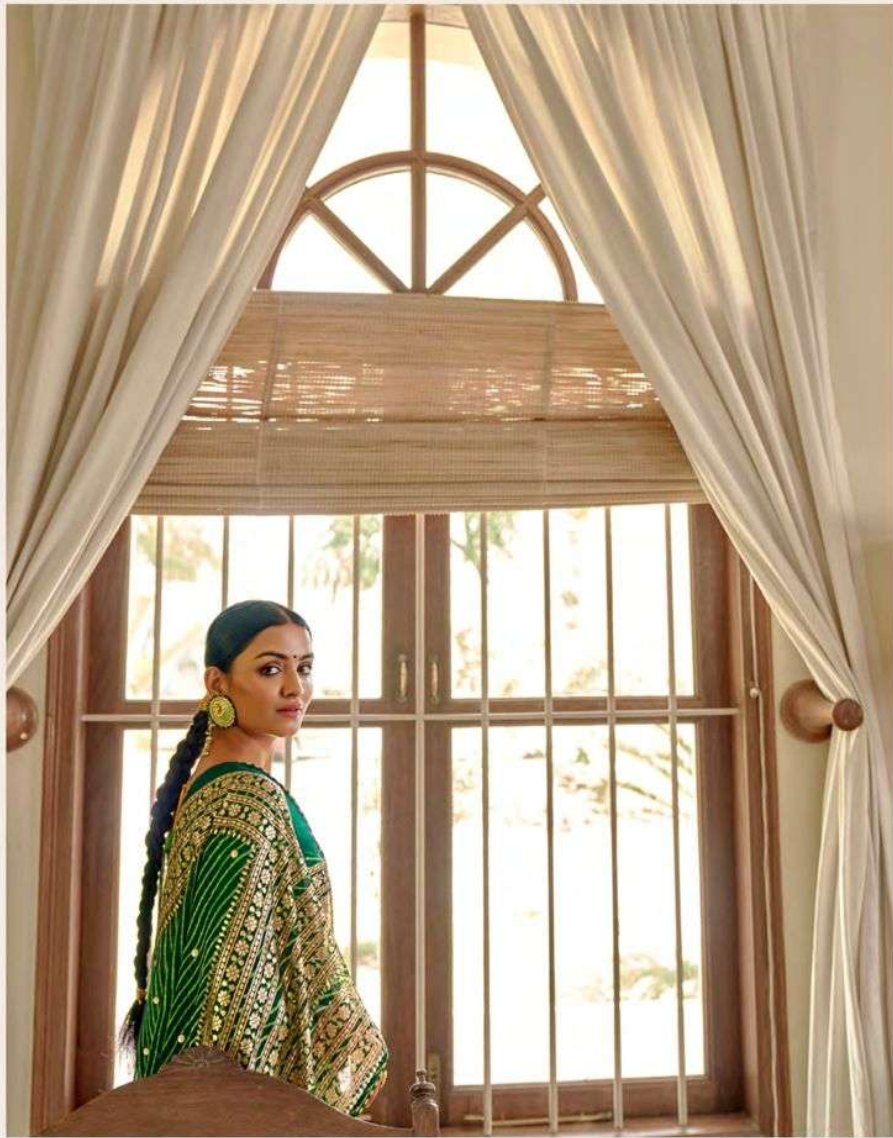
Shoamar

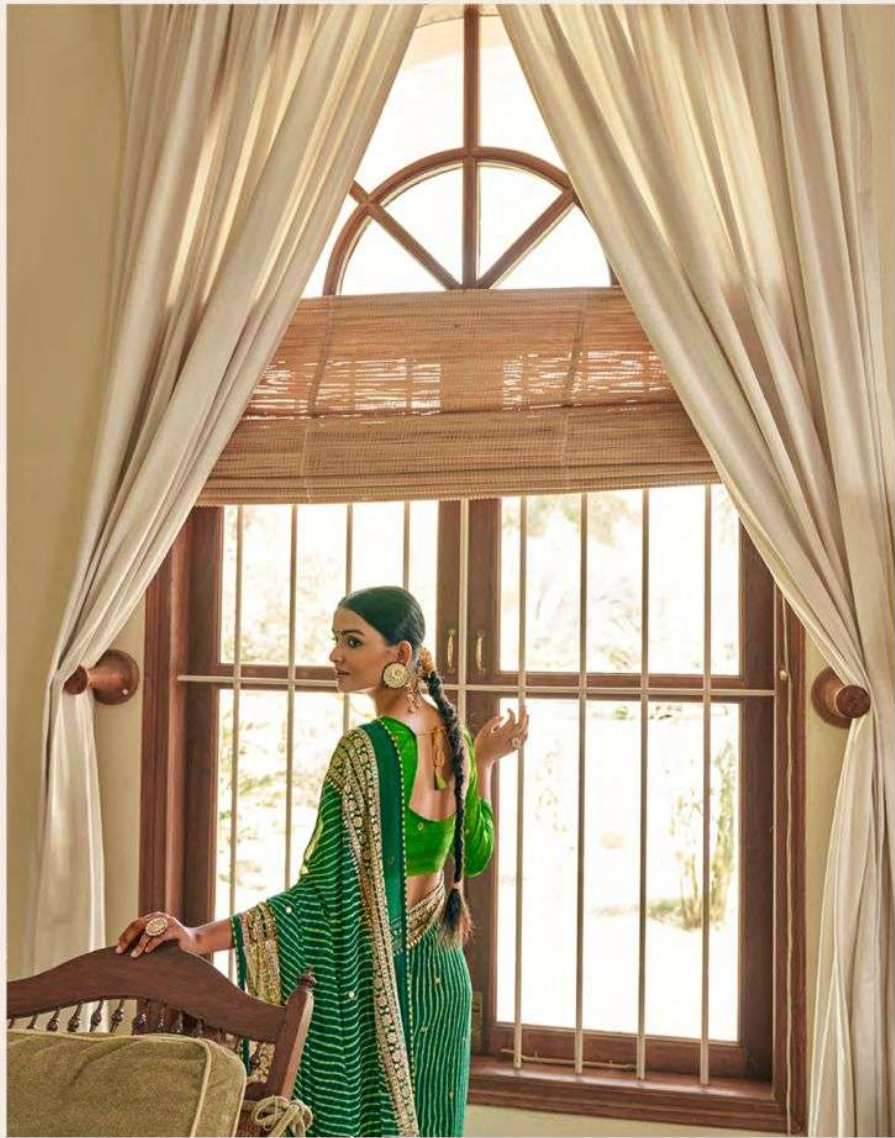


Kashvi[®]
creation

This JHOOMAR collection is prepared with special care. It is weaved with threads of fine fabrics and finishing is mind-blowing with different patterns. If you are a die-hard fan of Indian ethnic wear, Then this collection is the perfect thing to have in the wardrobe.








kashvi[®]
creation

1001







kashvi[®]
creation

1002








Kashvi[®]
creation

1003




kashvi
creation

1004












kashvi[®]
creation

1006





kashvi
creation

1007







kashvi
creation

1008






kashvi
creation

1009

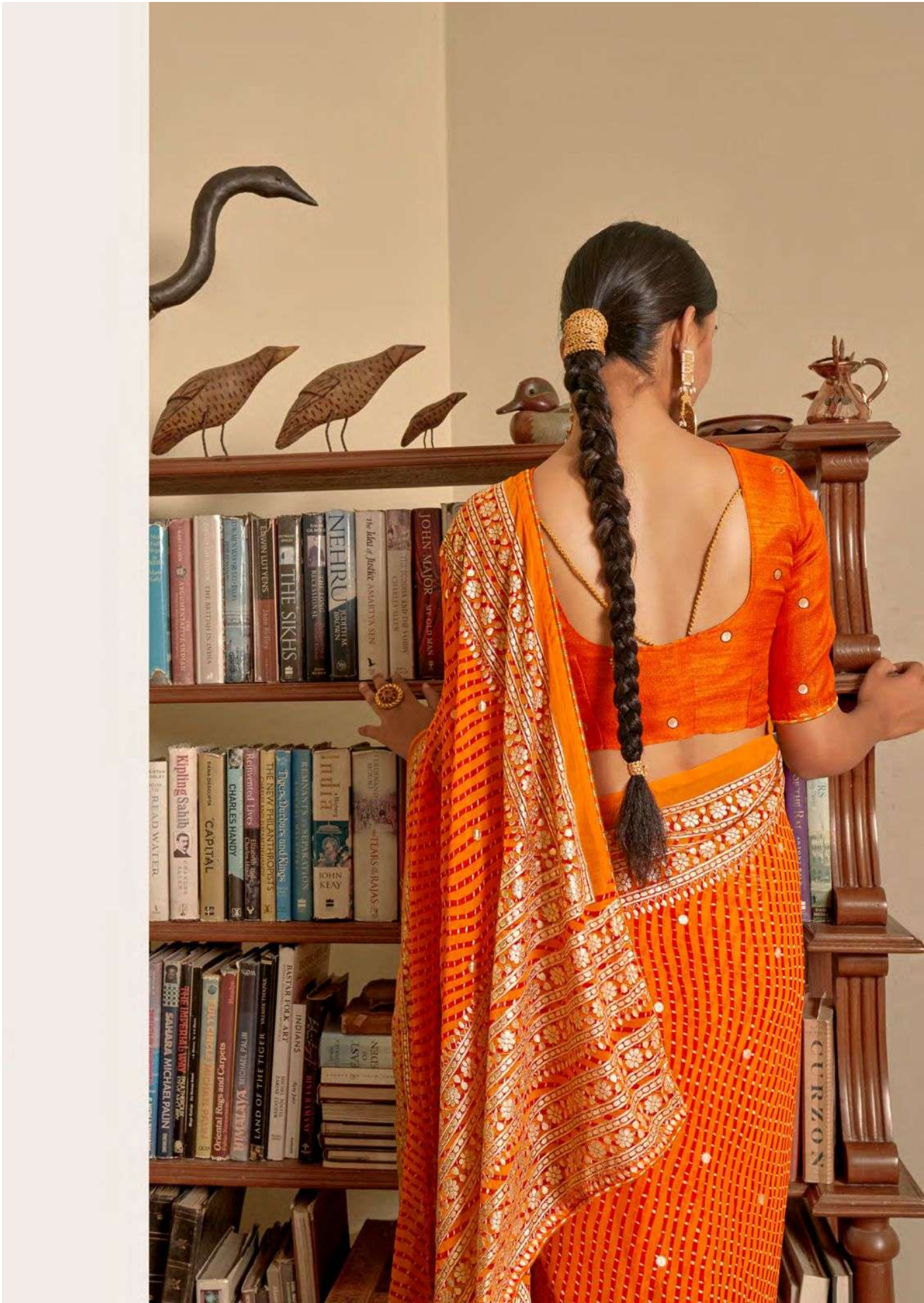





Kashvi[®]
creation

1010







1001



1002



1003



1004



1005



1006



1007



1008



1009



1010



kashvi
creation

Jhoosmar



















