

TOP:- CAMRIC COTTON WITH HEAVY BORING EMBROIDERY WORK

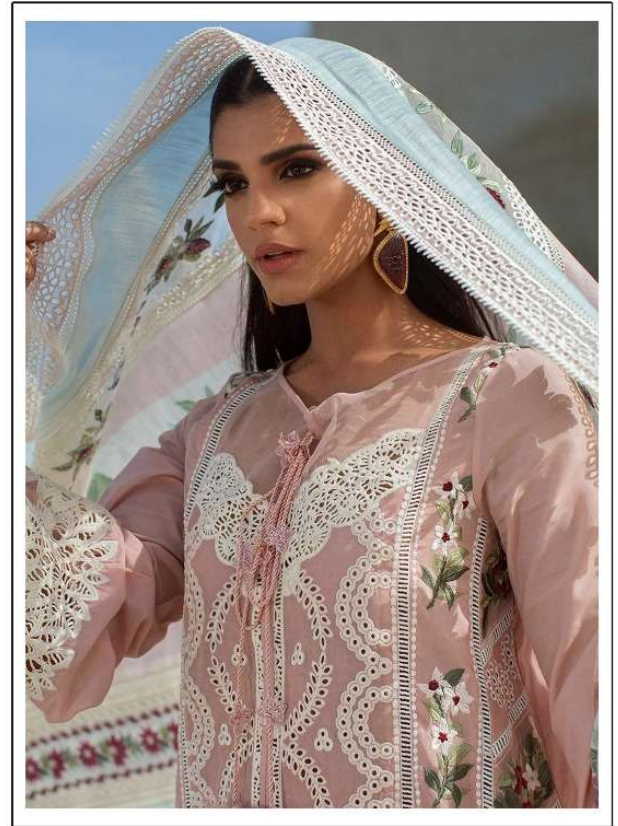
BOTTOM:- SEMILOWN

DUPATTA:- TABBY SILK WITH EMBROIDERY LACE

M-137 B

Ⓢ DRY CLEAN ONLY.
ⓧ DO NOT USE ANY BLEACH OR STAIN REMOVING CHEMICAL.
Ⓜ IRON THE FABRIC AT MODERATE TEMPERATURE.





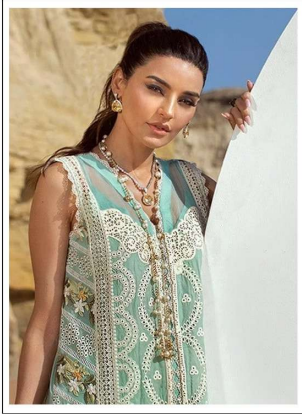
TOP:- CAMRIC COTTON WITH HEAVY BORING EMBROIDERY WORK

BOTTOM:- SEMILOWN

(M-137 A)

DUPATTA:- TABBY SILK WITH EMBROIDERY LACE

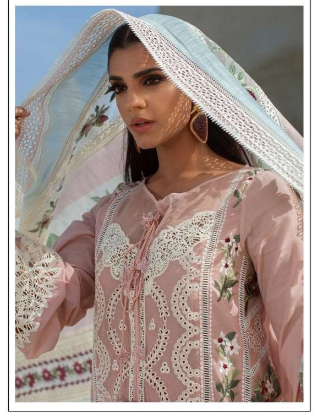
Ⓢ DRY CLEAN ONLY.
✘ DO NOT USE ANY BLEACH OR STAIN REMOVING CHEMICAL.
☐ IRON THE FABRIC AT MODERATE TEMPERATURE.



TOP:- CAMRIC COTTON WITH HEAVY BORING EMBROIDERY WORK
BOTTOM:- SEMILOWN
DUPATTA:- TABBY SILK WITH EMBROIDERY LACE

M-137 B

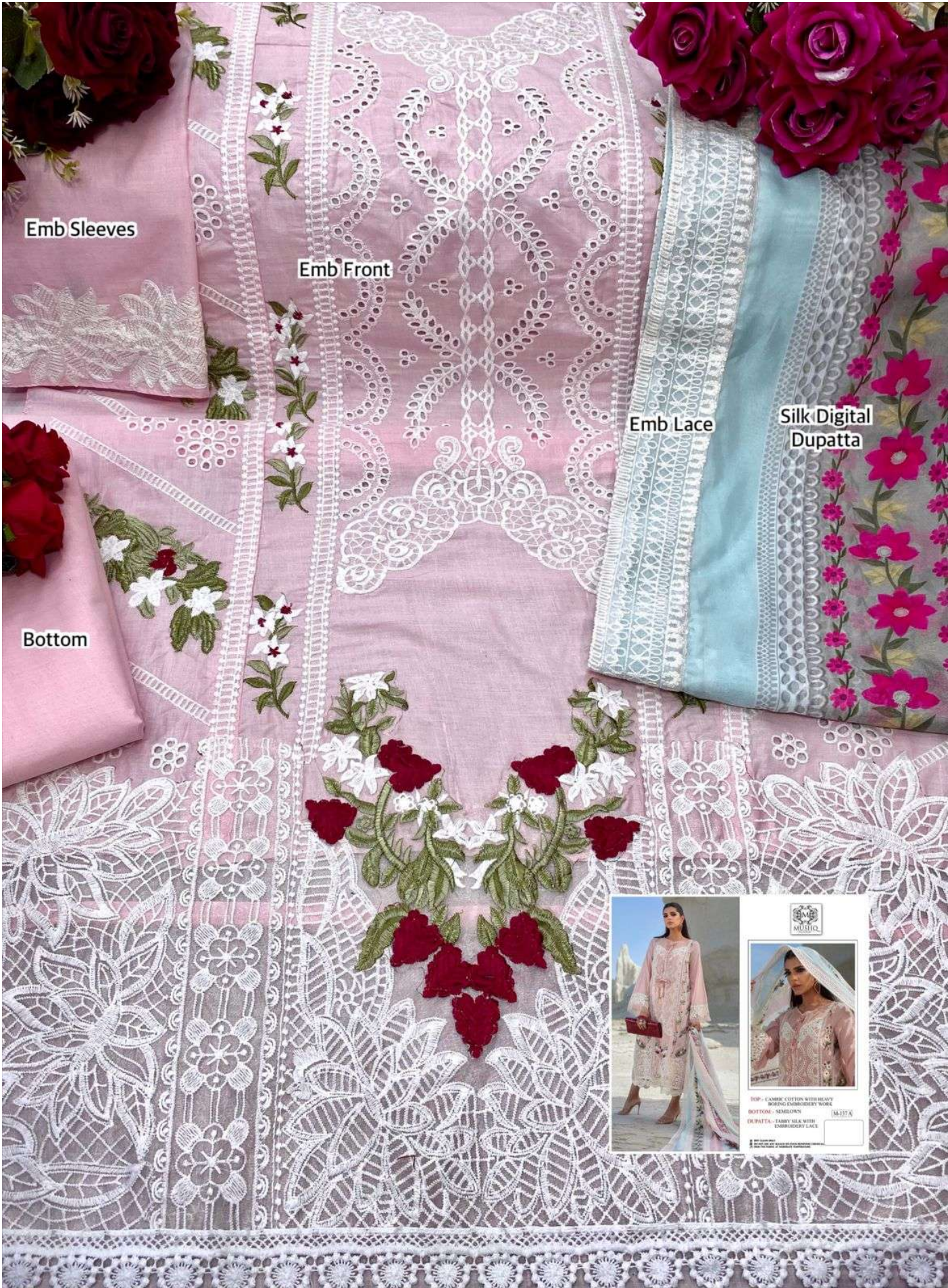
Ⓢ DRY CLEAN ONLY
ⓧ DO NOT USE ANY BLEACH OR STAIN REMOVING CHEMICAL
Ⓜ IRON THE FABRIC AT MODERATE TEMPERATURE.



TOP:- CAMRIC COTTON WITH HEAVY BORING EMBROIDERY WORK
BOTTOM:- SEMILOWN
DUPATTA:- TABBY SILK WITH EMBROIDERY LACE

M-137 A

Ⓢ DRY CLEAN ONLY
ⓧ DO NOT USE ANY BLEACH OR STAIN REMOVING CHEMICAL
Ⓜ IRON THE FABRIC AT MODERATE TEMPERATURE.



Emb Sleeves

Emb Front

Emb Lace

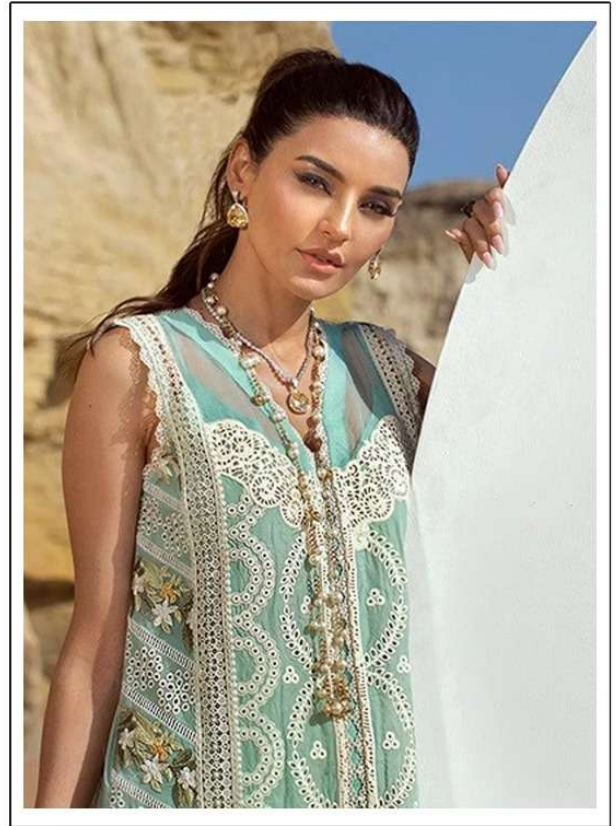
Silk Digital Dupatta

Bottom

MUSQO

TOP - C. CAMBRIC COTTON WITH HEAVY BOILING EMBROIDERY WORK
BOTTOM - SATEEN
DUPATTA - FABRY SILK WITH EMBROIDERY LACE

MSQ15



TOP:- CAMRIC COTTON WITH HEAVY
BORING EMBROIDERY WORK

BOTTOM:- SEMILOWN

DUPATTA:- TABBY SILK WITH
EMBROIDERY LACE

M-137 B

Ⓢ DRY CLEAN ONLY.
ⓧ DO NOT USE ANY BLEACH OR STAIN REMOVING CHEMICAL.
Ⓜ IRON THE FABRIC AT MODERATE TEMPERATURE.





Emb Sleeves

Emb Front

Emb Lace

Silk Digital Dupatta

Bottom

MUSTIQ

TOP - FABRIC: COTTON WITH HEAVY BOWING EMBROIDERY WORK

BOTTOM - SILK LINEN

DUPATTA - FABRIC: SILK WITH EMBROIDERY LACE

(M337) R