

A woman with long, wavy brown hair is shown in a three-quarter view, looking towards the left. She is wearing a dark green, long-sleeved dress with intricate floral embroidery in gold, pink, and red. A matching green dupatta with a subtle pattern is draped over her shoulders. She is also wearing a gold necklace with red accents, large gold earrings, and a red ring. The background is a soft, out-of-focus indoor setting with light coming from a window.

Fepic[®]

Rosemeen[®]
MEHRUMAH

Fepic®



WASHING INSTRUCTIONS

DO NOT USE ANY TYPE OF BLEACH OR STAIN REMOVING CHEMICALS
BEFORE CUTTING / STITCHING, FABRIC SHOULD BE SOAKED IN WATER
(ALL COMPONENTS SEPARATELY) FOR 15 MINUTES
DO NOT KEEP WET FABRIC IN TWISTED FORM IN ORDER TO AVOID COPY MARKS |
WASH COLOURED AND WHITE FABRICS SEPARATELY
IRON CLOTHES AT MODERATE TEMPERATURE | DO NOT DRY FABRIC IN DIRECT SUNLIGHT
(EXTRA LACES, HANGINGS AND ACCESSORIES ARE NOT INCLUDED)

Rosemeen®

MEHRUMAH

D.NO.90033





D.NO.90033

D.NO.90034

D.NO.90035

D.NO.90036

D.NO.90037

D.NO.90038

D.NO	TOP	INNER	BOTTOM	DUPATTA	PRICE
90033	GEORGETTE EMBROIDERED	SANTOON	SANTOON WITH EMB PAYAL PATCH	NAZMEEN EMBROIDERED	1289
90034	GEORGETTE EMBROIDERED	SANTOON	SANTOON WITH EMB PAYAL PATCH	NAZMEEN EMBROIDERED	1349
90035	GEORGETTE EMBROIDERED	SANTOON	SANTOON WITH EMB PAYAL PATCH	NAZMEEN EMBROIDERED	1325
90036	GEORGETTE EMBROIDERED	SANTOON	SANTOON WITH EMB PAYAL PATCH	NAZMEEN EMBROIDERED	1321
90037	GEORGETTE EMBROIDERED	SANTOON	SANTOON WITH EMB PAYAL PATCH	NET EMBROIDERED	1451
90038	GEORGETTE EMBROIDERED	SANTOON	SANTOON WITH EMB PAYAL PATCH	NET EMBROIDERED FRILL DUPATTA	1359
					AVG PRICE 1349

Fepic® Rosemeen®

MEHRUMAH

 _Fepic
 :Fb.com/Fepic11



Fepic®

Rosemeen®

MEHRUMAH

D.NO.90038

A woman with long, wavy brown hair is shown in a three-quarter view, looking towards the left. She is wearing a vibrant green outfit with intricate floral embroidery in shades of pink, red, and gold. The outfit consists of a long-sleeved top and a matching dupatta draped over her shoulders. She is also wearing gold jewelry, including a necklace, earrings, and a ring. The background is a soft, out-of-focus indoor setting with light-colored walls and a ceiling fan.

Fepic[®]

Rosemeen[®]
MEHRUMAH



Epic
Rosemeen

MEHRUMAH

D.NO.90035



Epic
Rosemeen

MEHRUMAH

D.NO.90036



Fepic®



WASHING INSTRUCTIONS

DO NOT USE ANY TYPE OF BLEACH OR STAIN REMOVING CHEMICALS
BEFORE CUTTING / STITCHING, FABRIC SHOULD BE SOAKED BE SOAKED IN WATER
(ALL COMPONENTS SEPARATELY) FOR 15 MINUTES
DO NOT KEEP WET FABRIC IN TWISTED FROM IN ORDER TO AVOID COPY MARKS |
WASH COLOURED AND WHITE FABRICS SEPARATELY
IRON CLOTHES AT MODERATE TEMPERATURE | DO NOT DRY FABRIC IN DIRECT SUNLIGHT
(EXTRA LACES, HANGINGS AND ACCESSORIES ARE NOT INDUDED)

Rosemeen®

MEHRUMAH

D.NO.90037



Fepic®



WASHING INSTRUCTIONS

DO NOT USE ANY TYPE OF BLEACH OR STAIN REMOVING CHEMICALS
BEFORE CUTTING / STITCHING, FABRIC SHOULD BE SOAKED BE SOAKED IN WATER
(ALL COMPONENTS SEPARATELY) FOR 15 MINUTES
DO NOT KEEP WET FABRIC IN TWISTED FROM IN ORDER TO AVOID COPY MARKS |
WASH COLOURED AND WHITE FABRICS SEPARATELY
IRON CLOTHES AT MODERATE TEMPERATURE | DO NOT DRY FABRIC IN DIRECT SUNLIGHT
(EXTRA LACES, HANGINGS AND ACCESSORIES ARE NOT INDUDED)

Rosemeen®

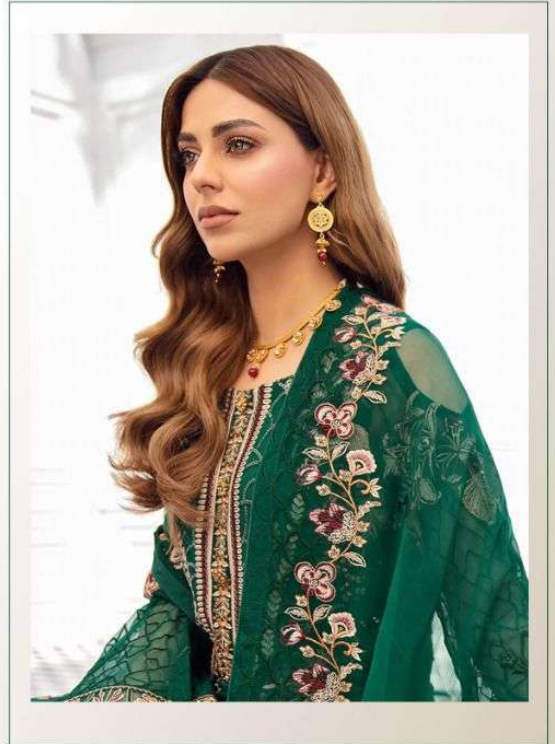
MEHRUMAH

D.NO.90034





Fepic®



Rosemeen®

MEHRUMAH

D.NO.90033

Fepic®



WASHING INTRUCTIONS

DO NOT USE ANY TYPE OF BLEACH OR STAIN REMOVING CHEMICALS
BEFORE CUTTING / STITCHING. FABRIC SHOULD BE SOAKED BE SOAKED IN WATER
(ALL COMPONENTS SEPARATELY) FOR 15 MINUTES
DO NOT KEEP WET FABRIC IN TWISTED FROM IN ORDER TO AVOID COPY MARKS |
WASH COLOURED AND WHITE FABRICS SEPARATELY
IRON CLOTHES AT MODERATE TEMPERATURE | DO NOT DRY FABRIC IN DIRECT SUNLIGHT
(EXTRA LACES, HANGINGS AND ACCESSORIES ARE NOT INUDED)

Rosemeen®

MEHRUMAH

D.NO.90038





Fepic®



WASHING INSTRUCTIONS

DO NOT USE ANY TYPE OF BLEACH OR STAIN REMOVING CHEMICALS
BEFORE CUTTING / STITCHING, FABRIC SHOULD BE SOAKED BE SOAKED IN WATER
(ALL COMPONENTS SEPARATELY) FOR 15 MINUTES
DO NOT KEEP WET FABRIC IN TWISTED FROM IN ORDER TO AVOID COPY MARKS |
WASH COLOURED AND WHITE FABRICS SEPARATELY
IRON CLOTHES AT MODERATE TEMPERATURE | DO NOT DRY FABRIC IN DIRECT SUNLIGHT
(EXTRA LACES, HANGINGS AND ACCESSORIES ARE NOT INDUDED)

Rosemeen®

MEHRUMAH

D.NO.90036





Fepic®



WASHING INTRUCTIONS

DO NOT USE ANY TYPE OF BLEACH OR STAIN REMOVING CHEMICALS
BEFORE CUTTING / STITCHING, FABRIC SHOULD BE SOAKED BE SOAKED IN WATER
(ALL COMPONENTS SEPARATELY) FOR 15 MINUTES
DO NOT KEEP WET FABRIC IN TWISTED FROM IN ORDER TO AVOID COPY MARKS |
WASH COLOURED AND WHITE FABRICS SEPARATELY
IRON CLOTHES AT MODERATE TEMPERATURE | DO NOT DRY FABRIC IN DIRECT SUNLIGHT
(EXTRA LACES, HANGINGS AND ACCESSORIES ARE NOT INDUDED)

Rosemeen®

MEHRUMAH

D.NO.90035

