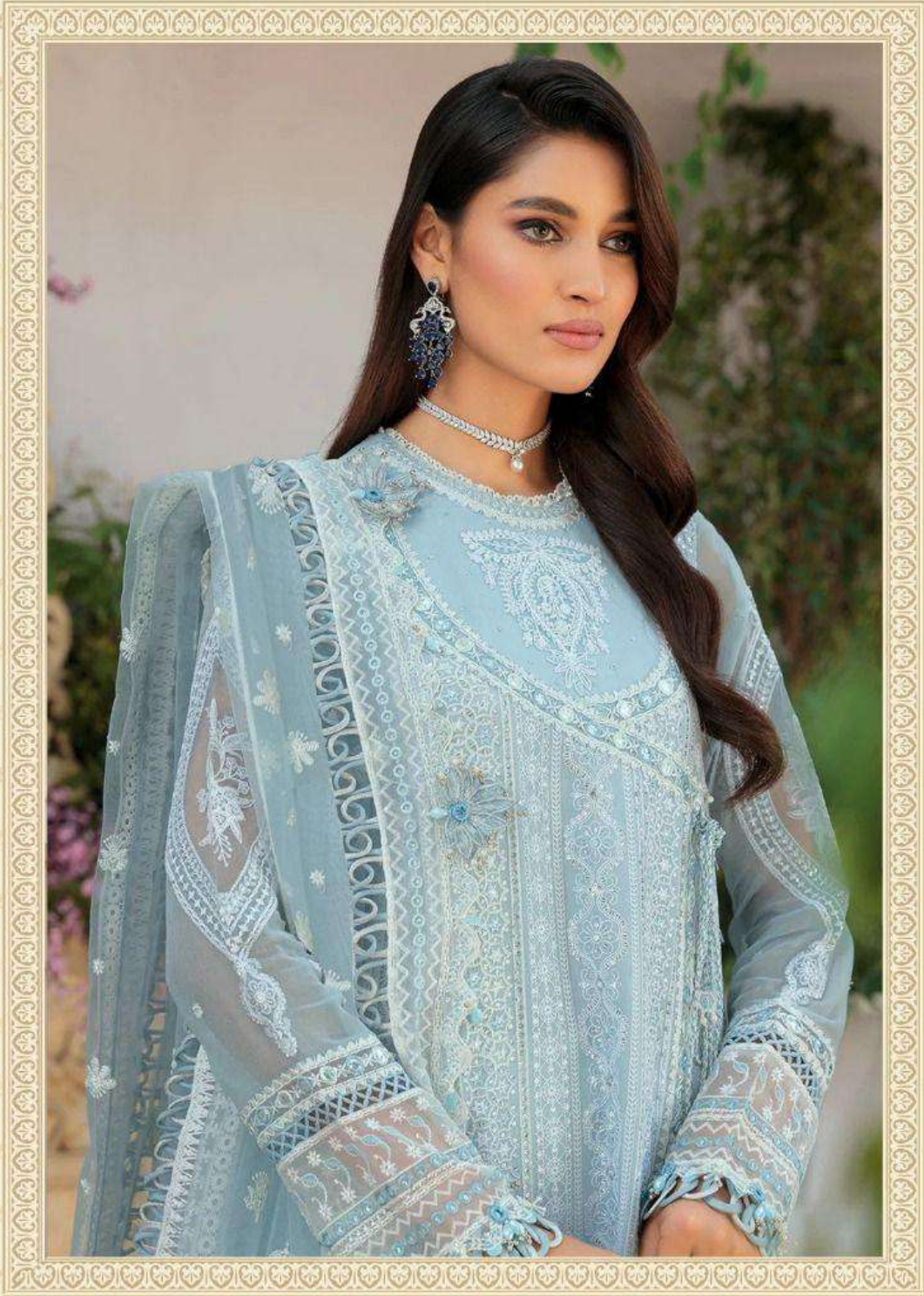


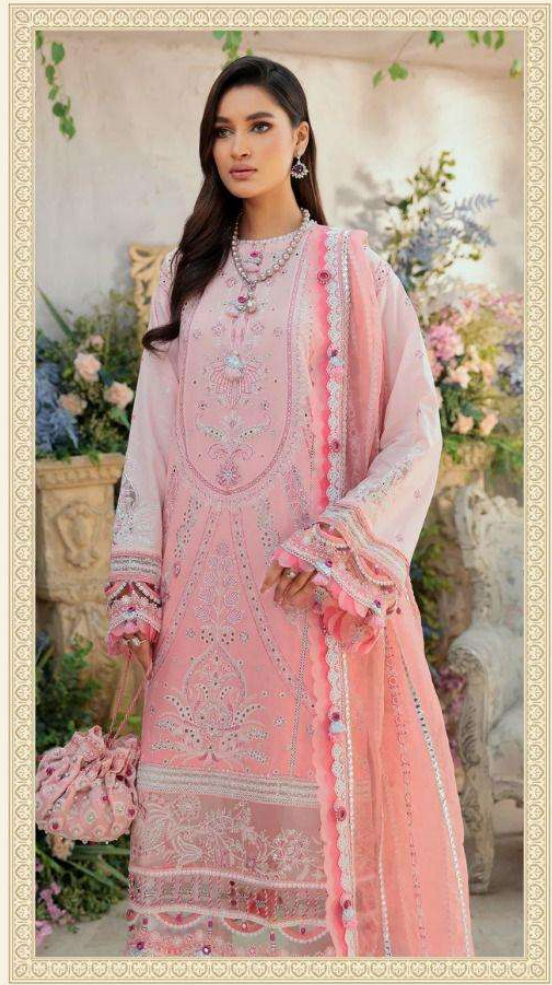
Fepic[®]



Rosemeen[®]
Wardrobe



Rosemeen®
Wardrobe
D.NO.91041



Rosemeen®
Wardrobe
D.NO.91040


D.NO	TOP	INNER	BOTTOM	DUPATTA	RATE
91040	FAUX GEORGETTE EMBROIDERED	SANTOON	SANTOON WITH PAYAL PATCH	NET EMBROIDERED WITH MIRROR WORK	1289
91041	BUTTERFLY NET EMBROIDERED	SANTOON	SANTOON	NET EMBROIDERED WITH PEARL WORK	1229
91042	FAUX GEORGETTE EMBROIDERED	SANTOON	SANTOON WITH PAYAL PATCH	NET EMBROIDERED	1249
91043	FAUX GEORGETTE EMBROIDERED	SANTOON	SANTOON WITH PAYAL PATCH	DIGITAL PRINTED CHIFFON DUPATTA	1349

AVERAGE RATE-1279

Fepic[®]

Rosemeen[®]
Wardrobe

 :_Fepic

 :Fb.com/Fepic11



D.NO.91040



D.NO.91041



D.NO.91042



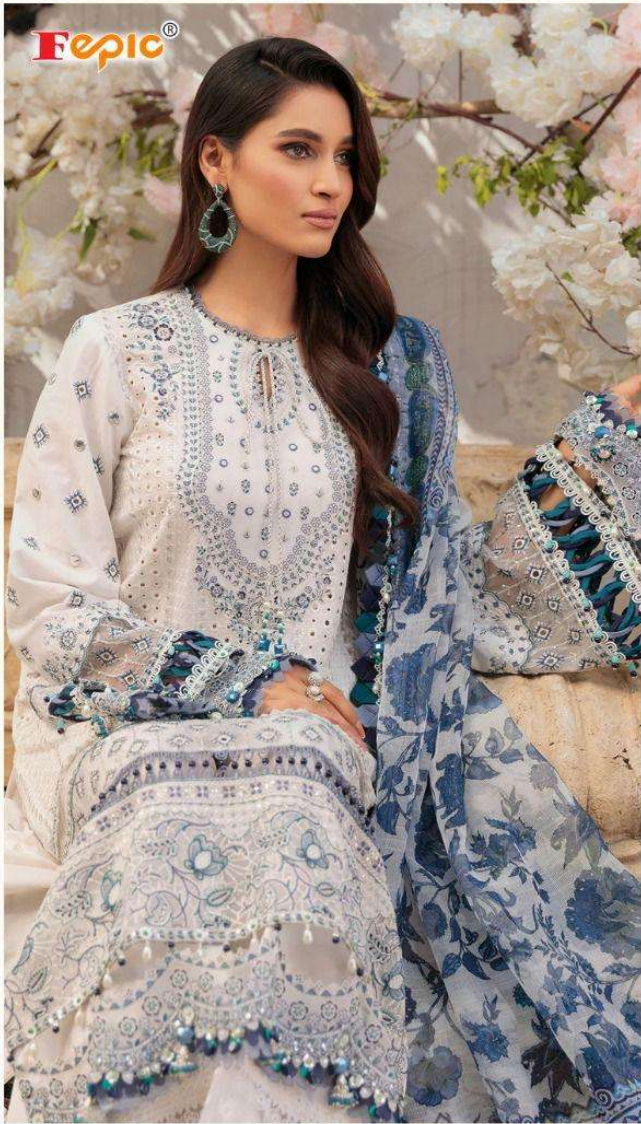
D.NO.91043

Fepic®

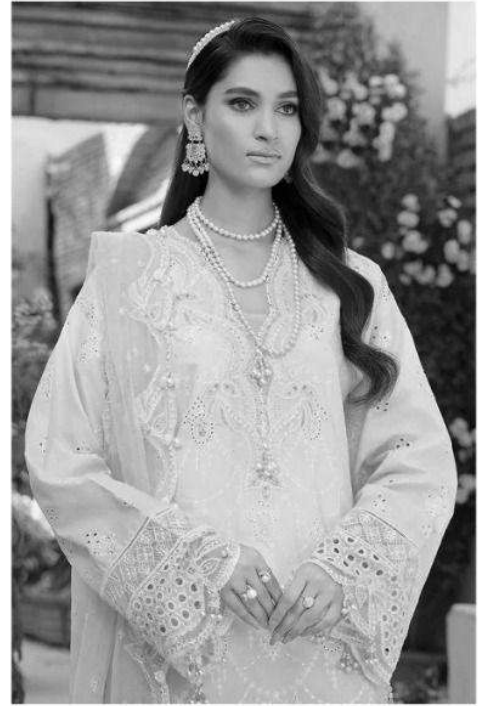
Rosemeen
Wardrobe

Instagram: [_Fepic](#)

Facebook: [Fb.com/Fepic11](#)



Rosemeen®
Wardrobe
D.NO.91043



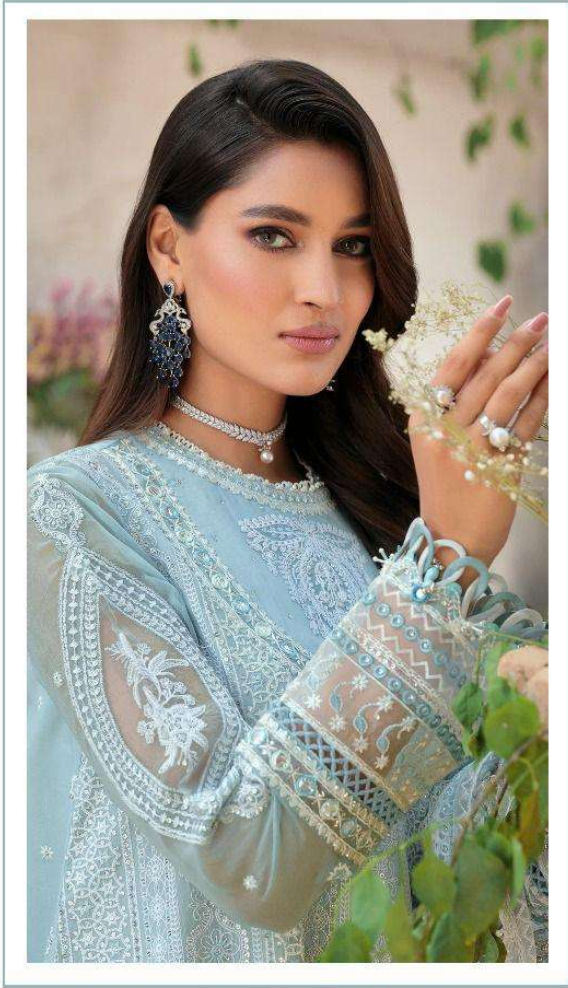
Fepic[®]

Rosemeen[®]

Wardrobe



Epic®



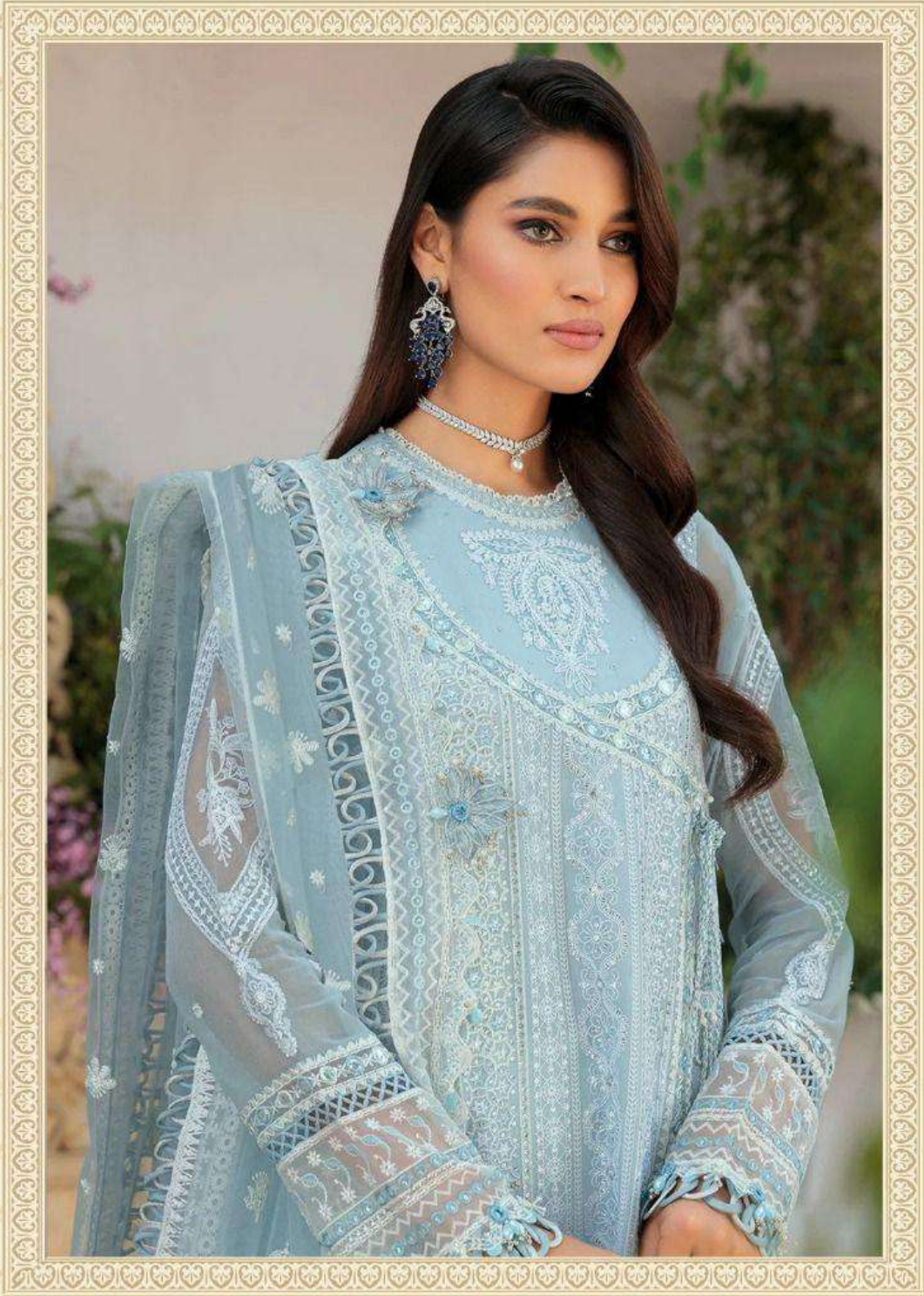
WASHING INTRUCTIONS

DO NOT USE ANY TYPE OF BLEACH OR STAIN REMOVING CHEMICALS
BEFORE CUTTING / STITCHING, FABRIC SHOULD BE SOAKED IN WATER
(ALL COMPONENTS SEPARATELY) FOR 15 MINUTES
DO NOT KEEP WET FABRIC IN TWISTED FORM IN ORDER TO AVOID COPY MARKS |
WASH COLOURED AND WHITE FABRICS SEPARATELY
IRON CLOTHES AT MODERATE TEMPERATURE | DO NOT DRY FABRIC IN DIRECT SUNLIGHT
(EXTRA LACES, HANGINGS AND ACCESSORIES ARE NOT INDUDED)

Rosemeen®
Wardrobe
D.NO.91041



Fepic[®]



Rosemeen[®]
Wardrobe



Eepic®



WASHING INSTRUCTIONS

DO NOT USE ANY TYPE OF BLEACH OR STAIN REMOVING CHEMICALS
BEFORE CUTTING / STITCHING. FABRIC SHOULD BE SOAKED IN WATER
(ALL COMPONENTS SEPARATELY) FOR 15 MINUTES

DO NOT KEEP WET FABRIC IN TWISTED FORM IN ORDER TO AVOID COPY MARKS |
WASH COLOURED AND WHITE FABRICS SEPARATELY

IRON CLOTHES AT MODERATE TEMPERATURE | DO NOT DRY FABRIC IN DIRECT SUNLIGHT
(EXTRA LACES, HANGINGS AND ACCESSORIES ARE NOT INCLUDED)

Rosemeen®
Wardrobe
D.NO.91040

