



Raas

VOL - 4



Design No. (SKU)	2111	2112	2113	2114	2115	2116	2117	2118	2119
Lehenga Color	Fluorescent Green	Beige	White	Pink & Navy Blue	Black & White	White	White & Red	Purple	Black
Choli Color	Fluorescent Green	Beige	Navy	Navy	Black	White	White & Red	White & Red	Mustard yellow
Dupatta Color	NA	Maroon	Deep Pink	Fluorescent Green	Black	Scarlet	White	NA	Pink
Juda Latkan	Available	NA	NA	Available	NA	NA	NA	Available	NA
Koti (Full Stitched) 42-SIZE	Available (Print with Sequince Work)	NA	NA	NA	NA	NA	NA	Available (Embellished Mirror Work)	NA
Lehenga Flair	8.5 MTR	8.5 MTR	8.5 MTR	8.5 MTR	8.5 MTR	8.5 MTR	8.5 MTR	8.5 MTR	8.5 MTR
Lehenga Fabric	Maslin Cotton	Maslin Cotton	Maslin Cotton	Silk	Maslin Cotton	Maslin Cotton	Maslin Cotton	Maslin Cotton	Maslin Cotton
Choli Fabric	Maslin Cotton	Maslin Cotton	Maslin Cotton	Silk	Maslin Cotton	Maslin Cotton	Gajji Silk	Maslin Cotton	Gajji Silk
Dupatta Fabric	NA	Cotton	Pure Georgette	Silk	Cotton	Cotton	Maslin Cotton	Cotton	NA
SIZE (Semi-Stitched)	UPTO 42 BUST AND WAIST	UPTO 42 BUST AND WAIST	UPTO 42 BUST AND WAIST	UPTO 42 BUST AND WAIST	UPTO 42 BUST AND WAIST	UPTO 42 BUST AND WAIST	UPTO 42 BUST AND WAIST	UPTO 42 BUST AND WAIST	UPTO 42 BUST AND WAIST
Lehenga Work	Thread Embroidered With All-Over Mirror And Pompom Pasting Work	Thread Embroidered With Mirror Pasting Added Print Work	Thread Embroidered With All-Over Mirror Pasting Work (Heavy Latkan Attached With Waist String)	Thread Embroidered Work	Thread Embroidered With All-Over Mirror And Pompom Pasting Added Embellished Mukaish Work (Heavy Latkan Attached With Waist String)	Thread Embroidered With All-Over Mirror And Pompom Pasting Work	Thread Embroidered With All-Over Pompom Pasting Added Print Work	Thread Embroidered With Mirror Pasting Added Embellished Mukaish Work	Thread Embroidered With All-Over Pompom Pasting Added Embellished Mukaish Work
Choli Work	Embellished Mirror Work	Thread Embroidered Work With Mirror Pasting Work	Embellished Mirror Work	Thread Embroidered Work With All-Over Mirror Pasting Work	Thread Embroidered With All-Over Mirror Pasting Work	Thread Embroidered With All-Over Mirror Pasting Work	Thread Embroidered With All-Over Pompom Pasting Added Print Work	Thread Embroidered With All-Over Mirror Pasting Work	Thread Embroidered With Printed Work
Dupatta Work	NA	Aari Work With Printed Dupatta	Shibburi Print With Lace On Border	Thread Embroidered Work	Aari work with Printed Dupatta	Aari work with Printed Dupatta	Thread Embroidered with All-over Pompom Pasting Work	NA	Aari Work with Printed Dupatta
Lehenga Length	42 INCH Length 42 INCH Waist	42 INCH Length 42 INCH Waist	42 INCH Length 42 INCH Waist	42 INCH Length 42 INCH Waist	42 INCH Length 42 INCH Waist	42 INCH Length 42 INCH Waist	42 INCH Length 42 INCH Waist	42 INCH Length 42 INCH Waist	42 INCH Length 42 INCH Waist
Choli Length	0.65 MTR	1 MTR	1 MTR	1 MTR	1 MTR	1 MTR	1 MTR	0.5 MTR	1 MTR
Dupatta Length	NA	2.30 MTR	2.30 MTR	2.30 MTR	2.30 MTR	2.30 MTR	2.40 MTR	NA	2.30 MTR
Weight	1.5 KG	1.5 KG	1.5 KG	1.5 KG	1.5 KG	1.5 KG	1.5 KG	1.5 KG	1.5 KG

THIS BOOK / CATALOGUE / LOGO / ARE PROTECTED UNDER COPYRIGHT ACT. AN ILLEGA/UNAUTHORIZED REPRINT, PUBLISHING, REPRODUCTION, DISTRIBUTION AND MODIFICATION OF ANY IMAGES, PHOTOGRAPHS AND PRODUTCS, TOTALLY OR IN PART, FOR ANY PURPOSE, REASON OR CAUSE IS STRICTLY PROHIBITED AND PUNISHABLE UNDER LAW.



Swastika bhkala



DRESS LIKE YOU'RE ALREADY FAMERS

2111



卐 bhkala



DRESS LIKE YOU'RE ALREADY FAMOUS

2111



Ubhkala



LET'S LOVE FASHION
2112

Swabhkala



LET'S LOVE FASHION
2112





bhkala



A CLASSIC NEVER GOES OUT OF STYLE

2113

The right side of the image is a promotional layout for a clothing item. It features the brand name 'bhkala' at the top. Below it is a photograph of the same woman from the left image, but viewed from the back. She is standing in a doorway, looking over her shoulder. The background shows a decorated interior. At the bottom of the layout, there is a small tagline 'A CLASSIC NEVER GOES OUT OF STYLE' and the number '2113'.

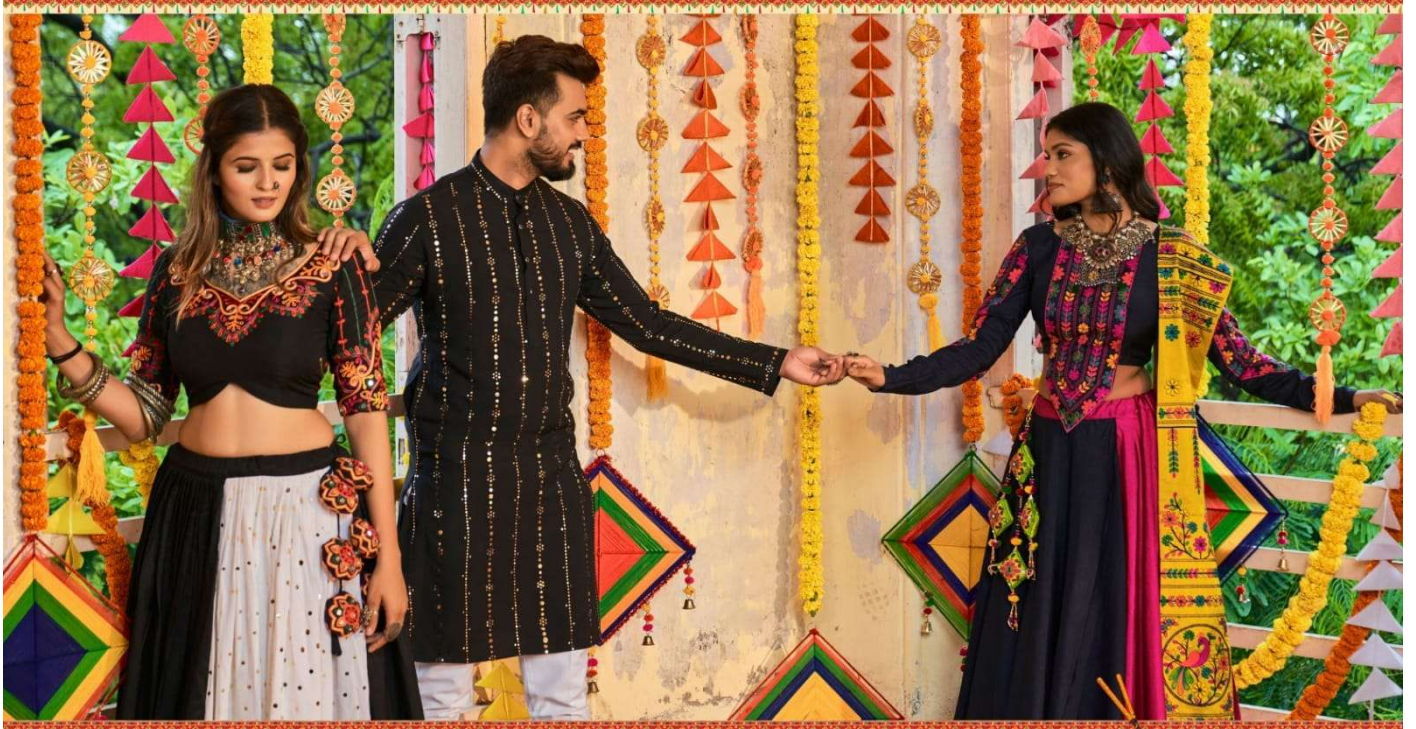
Swastika bhkala



LET'S LOVE FASHION

2113

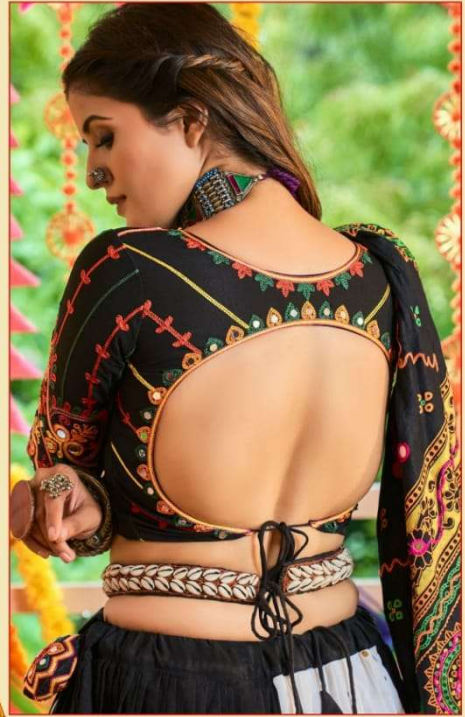




BE STYLE BE YOU



Swabhkala



ITS FASHION IMPACT

2115



Swastika bhkala



LET'S LOVE FASHION

2114



ITS FASHION
IMPACT

2115



bhkala



LET'S LOVE FASHION
2114



Swastika bhkala



2117



शुभकला



ALWAYS BE DIFFERENT.

2116



शुभकला bhkala

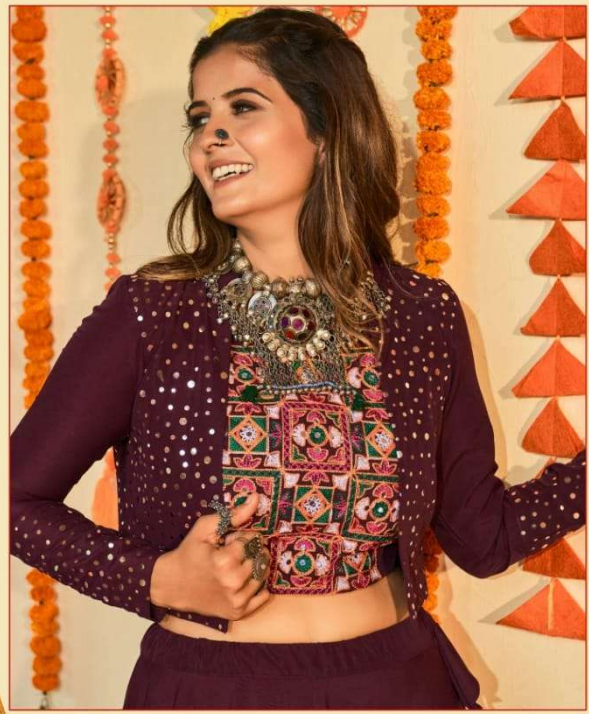


FASHION SPRING
2116





शुभकला



THE WAY OF DRESSING
2118



शुभकला



ALWAYS BE DIFFERENT
2117



शुभकला



THE ART OF DRESSING

2119

Swabhkala



BE TRENDY FOR EVERY MOOD
2119



Swastika bhkala



शुभकला bhkala



THE KEY OF DRESSING

2118





2111



2112



2113



2114



2115



2116



2117



2118

Ubhkala



2119

Raas
VOL - 4



















