



bhkala®

Bridesmaid

VOL~20



#2151



#2152



#2153



#2154



#2155



#2156



bhkala

Bridesmaid

VOL-20



Bridesmaid VOL~20

Design NO. (SKU)	Main Color	Lehenga & Belt Fabric	Choli Fabric	Dupatta Fabric	Size (Semi-Stitched)	Lehenga & Belt Work	Choli Work	Dupatta Work	Choli Length MTR	Lehenga Length MTR	Dupatta Length MTR	Weight
2151	Teal Blue	Georgette	Georgette	Georgette	UPTO 42 BUST AND WAIST	Thread with Sequince Embroidered Work	Thread with Sequince Embroidered Work	Thread with Sequince Embroidered Work	0.80 MTR	42 INCH	2.30 MTR	2 KG
2152	Maroon	Georgette	Georgette	Georgette	UPTO 42 BUST AND WAIST	Thread with Sequince Embroidered Work	Thread with Sequince Embroidered Work	Thread with Sequince Embroidered Work	0.80 MTR	42 INCH	2.30 MTR	2 KG
2153	Yellow	Georgette	Georgette	Georgette	UPTO 42 BUST AND WAIST	Thread with Sequince Embroidered Work	Thread with Sequince Embroidered Work	Thread with Sequince Embroidered Work	0.80 MTR	42 INCH	2.30 MTR	2 KG
2154	Purple	Georgette	Georgette	Georgette	UPTO 42 BUST AND WAIST	Thread with Sequince Embroidered Work	Thread with Sequince Embroidered Work	Thread with Sequince Embroidered Work	0.80 MTR	42 INCH	2.30 MTR	2 KG
2155	Navy Blue	Georgette	Georgette	Georgette	UPTO 42 BUST AND WAIST	Thread with Sequince Embroidered Work	Thread with Sequince Embroidered Work	Thread with Sequince Embroidered Work	0.80 MTR	42 INCH	2.30 MTR	2 KG
2156	Green	Georgette	Georgette	Georgette	UPTO 42 BUST AND WAIST	Thread with Sequince Embroidered Work	Thread with Sequince Embroidered Work	Thread with Sequince Embroidered Work	0.80 MTR	42 INCH	2.30 MTR	2 KG

THIS BOOK / CATALOGUE / LOGO / ARE PROTECTED UNDER COPYRIGHT ACT.
 AN ILLEGAL/UNAUTHORIZED REPRINT, PUBLISHING, REPRODUCTION, DISTRIBUTION AND MODIFICATION OF ANY IMAGES, PHOTOGRAPHS AND PRODUCTS,
 TOTALLY OR IN PART, FOR ANY PURPOSE, REASON OR CAUSE IS STRICTLY PROHIBITED AND PUNISHABLE UNDER LAW.











bhkala®

Bridesmaid

VOL~20

bhkala



Poping up bright lines on an
eerie palette with a scattering of delicate
floral motifs – it's just the way
traditional shone.
#2151





शुभकला bhkala

Popping up bright hues on austere palette with a touch of delicate floral motifs - it's just the way traditional returns.



bhkala



Popping up bright bursts in an
easy silhouette with a
weaving of details.
Bare shoulders & just the on
midriff theme.
#2152



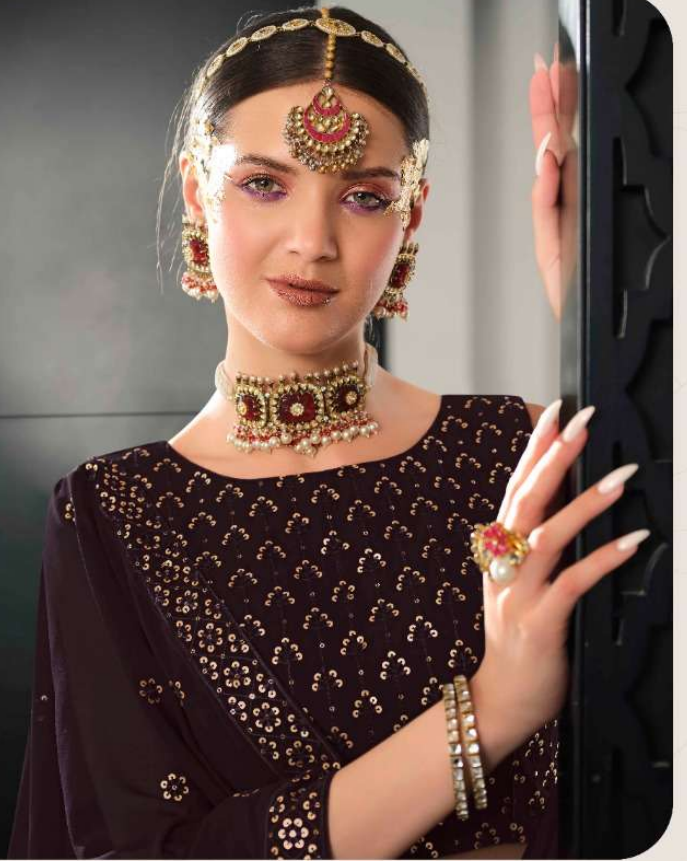


Peeping up bright hues on an
eerie palette with a
manipulation of delicate
faded motifs – it's just the old
traditional charm.
#2153

bhkala



Popping up bright, her oxa jewelry piece with a
workmanship of delicate
formal motifs in it just like our traditional charm.
#2154



bhkala



Popping up bright hues on an
inky palette with a
contrast of colors
from earth – it's just the
traditional drama.
#2154

bhkala



Peeping up bright hues on ammy palette, with a
counting of delicate
floral motifs – it's just the traditional charm.
#2156





Popping up bright hues as an
easy pattern with a
maneuvering of delicate
floral motifs - it's just the way
we did it in this one.

#2155

