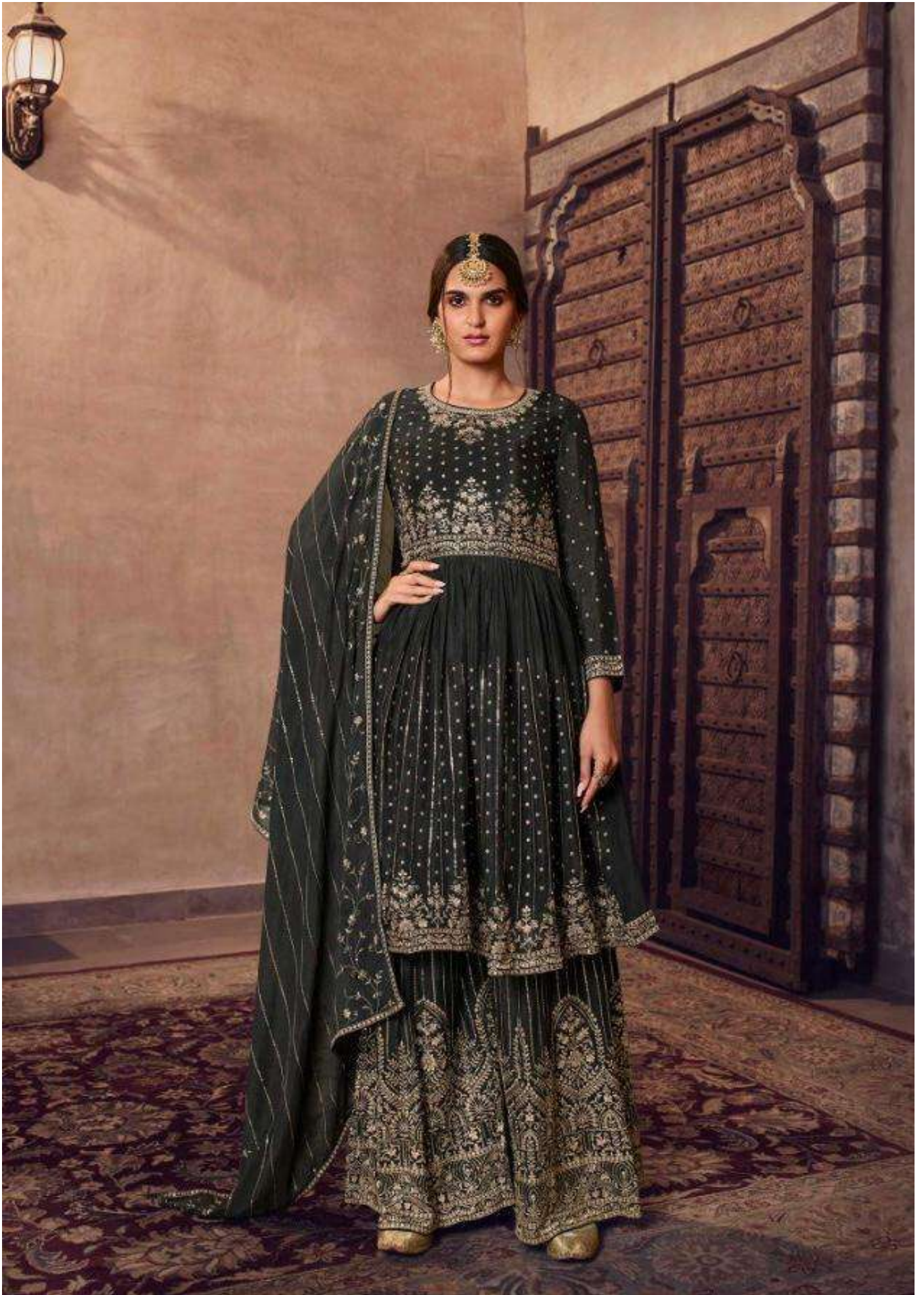
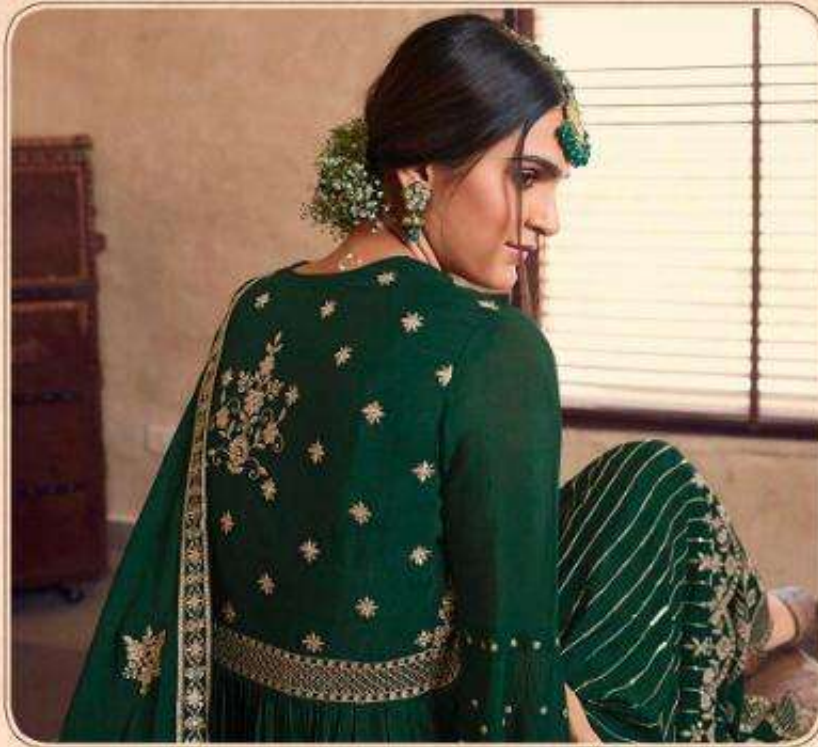


Glossy
SHAMAA





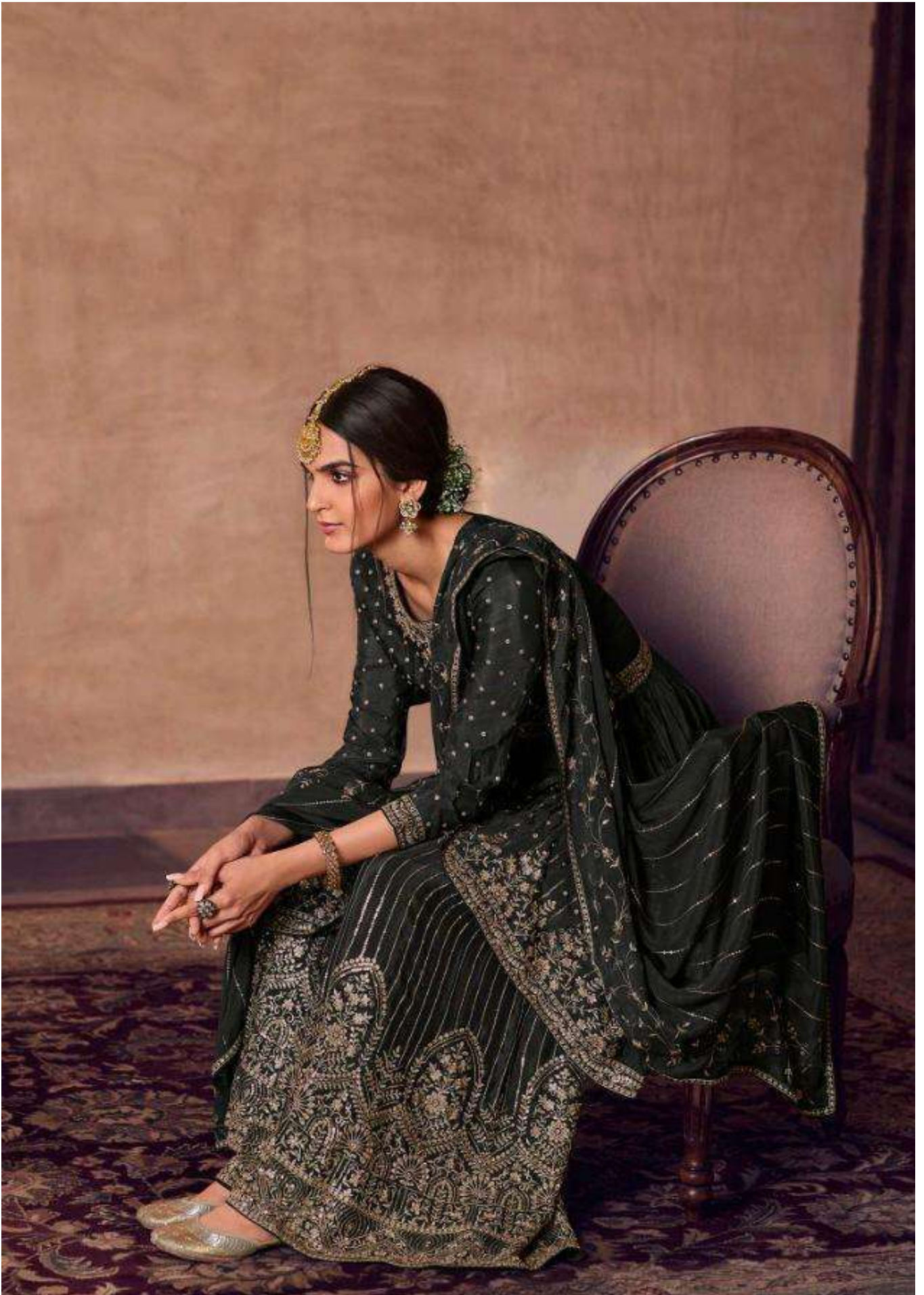


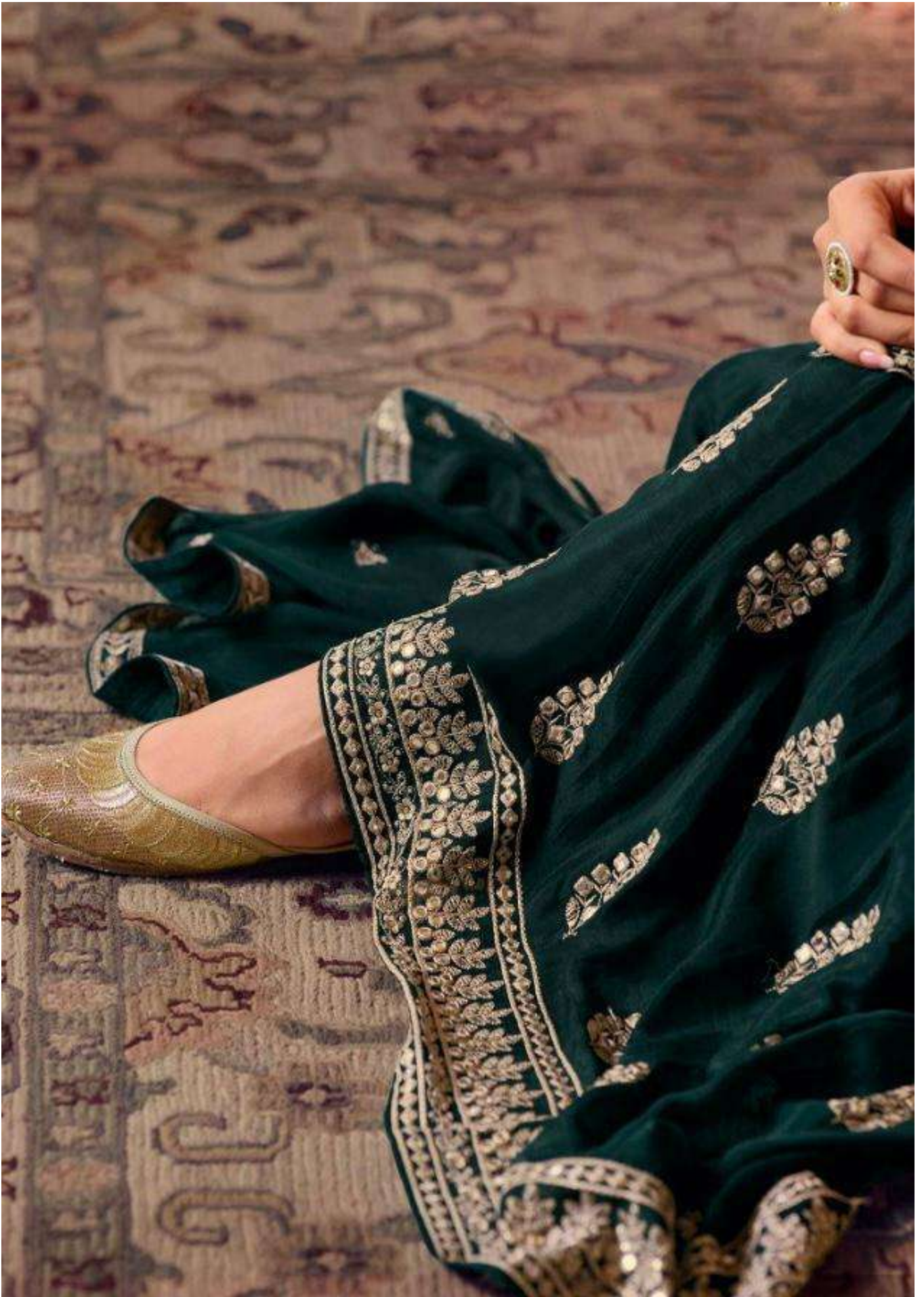
Glossy

Pastel being the preferable pick of the season has become every to-be bride's go-to changing ensemble.

D.NO-553

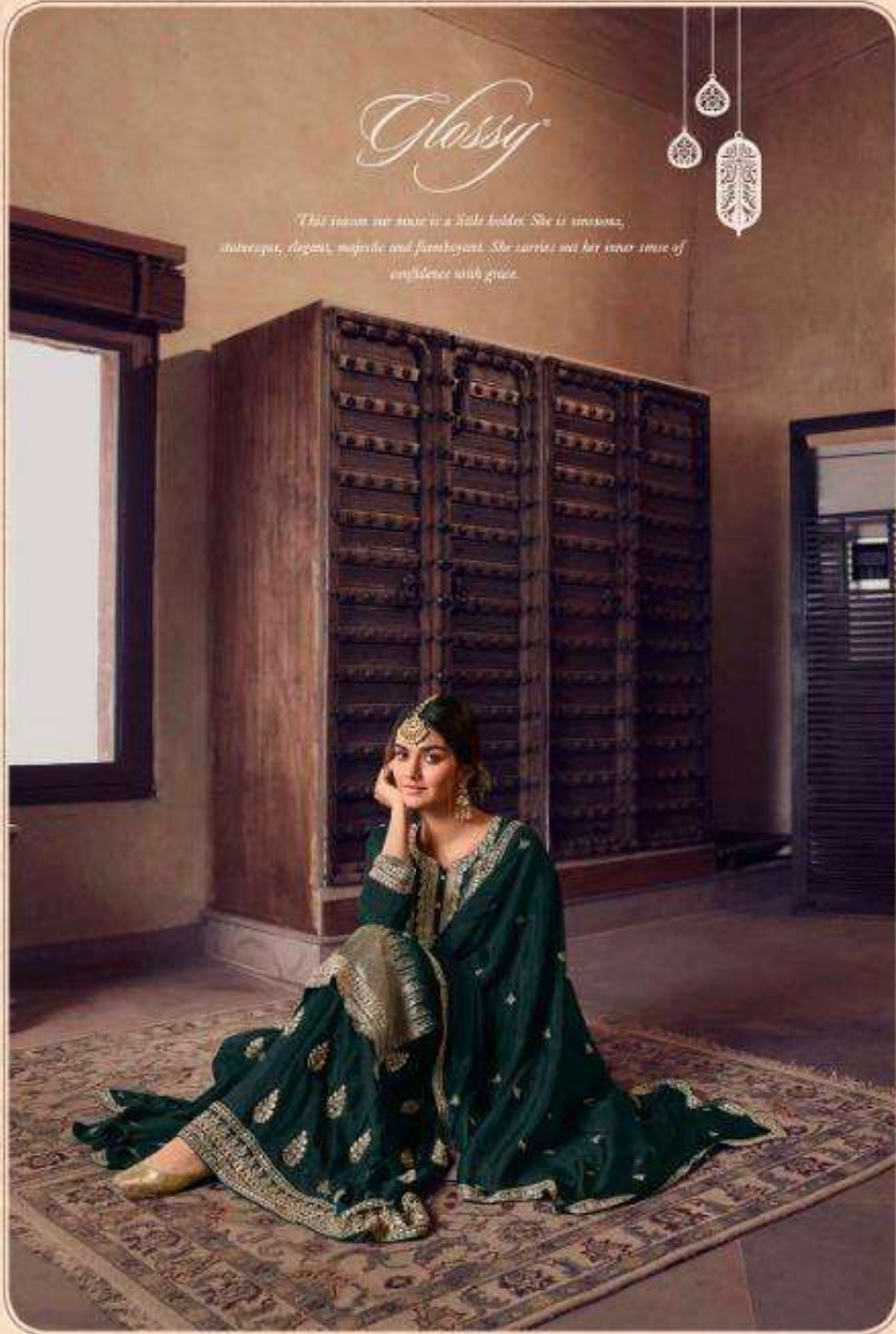


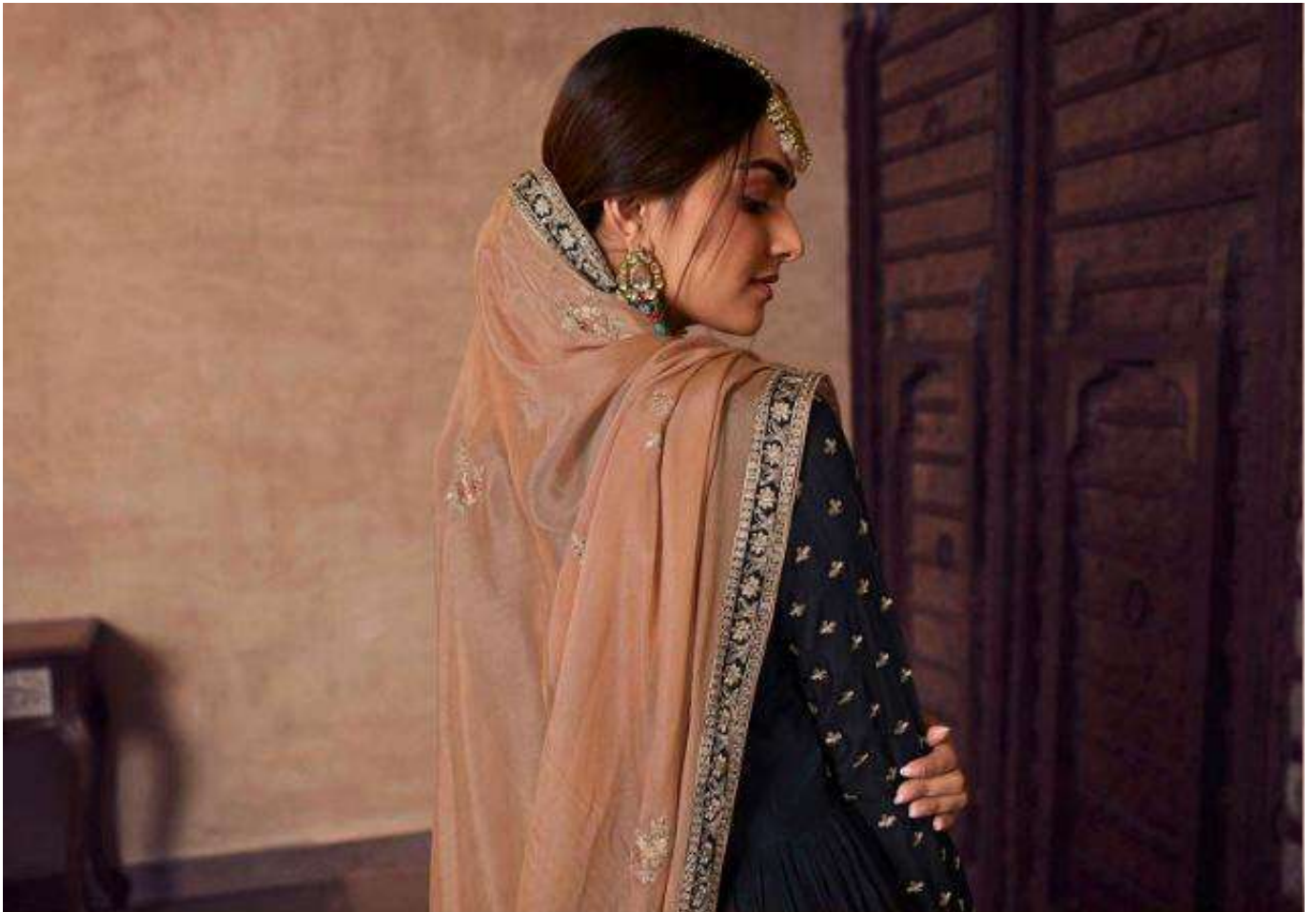




Glossy

*This season our muse is a fall holder. She is whimsical,
intricate, elegant, majestic and flamboyant. She carries out her inner sense of
confidence with grace.*

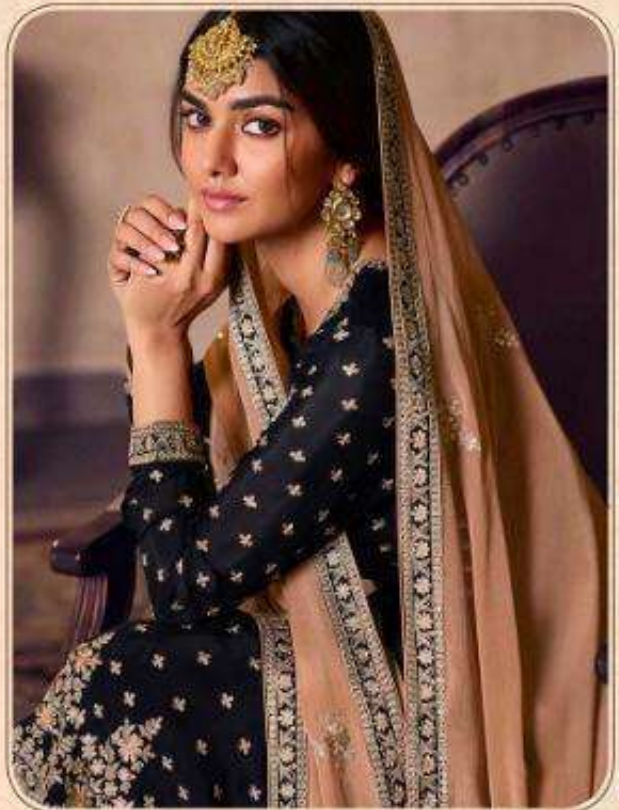




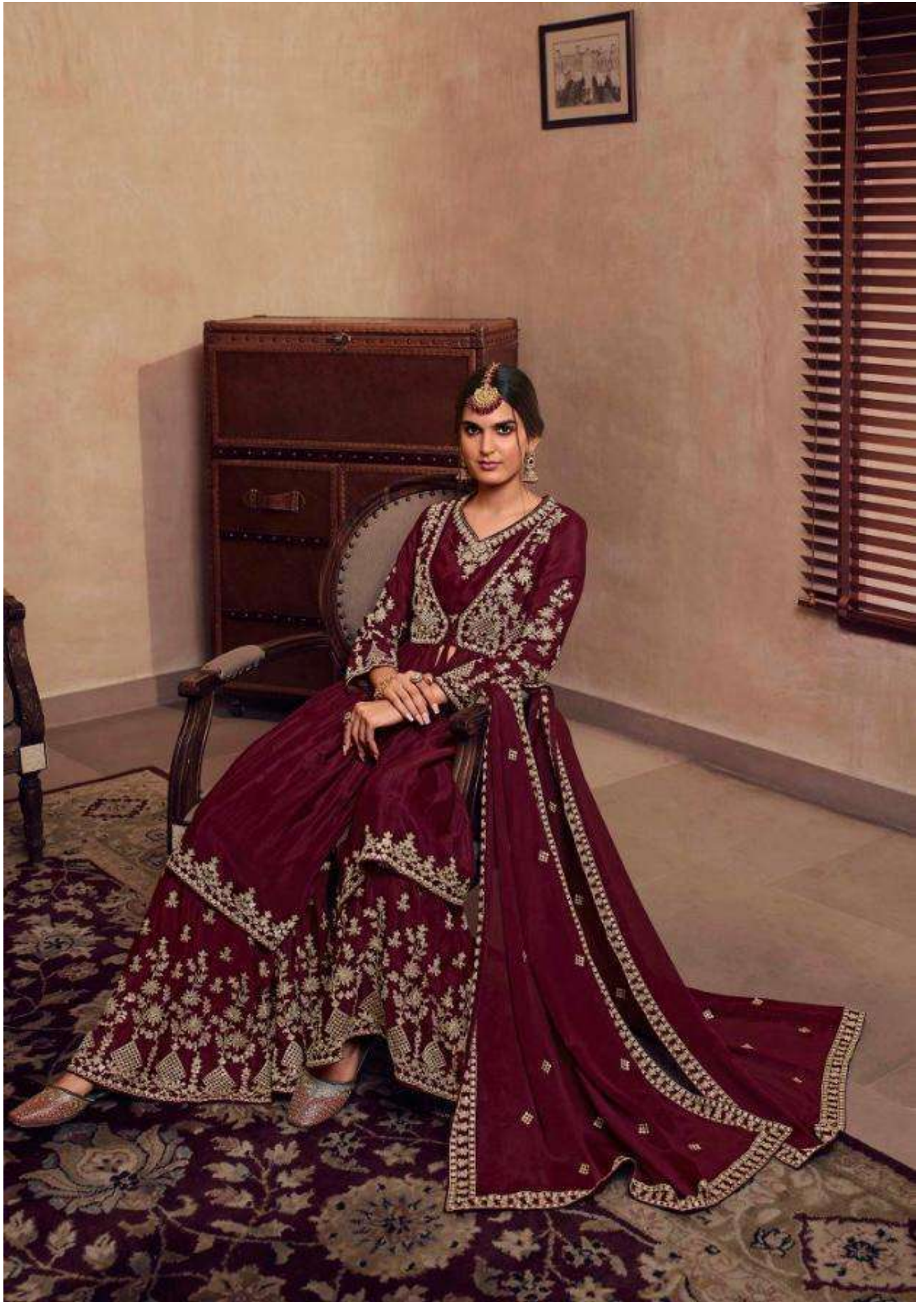
Glossy

You can never go wrong with the red dress at evening party, attention is all yours!

D.NO-550







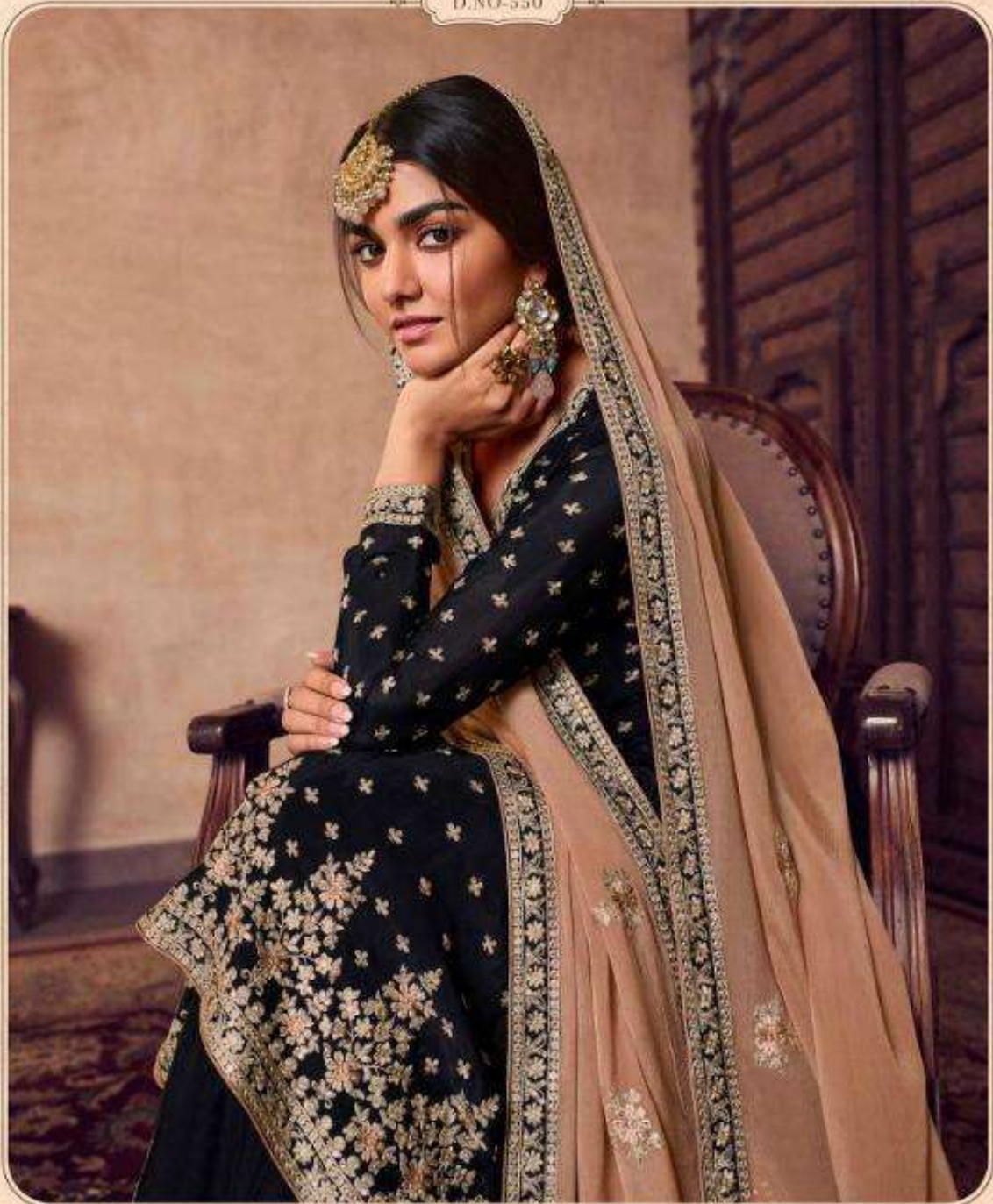
Glossy
SHAMAA



Glossy

*You can never go wrong with the red dress at evening party;
attention is all yours!*

D.NO-550





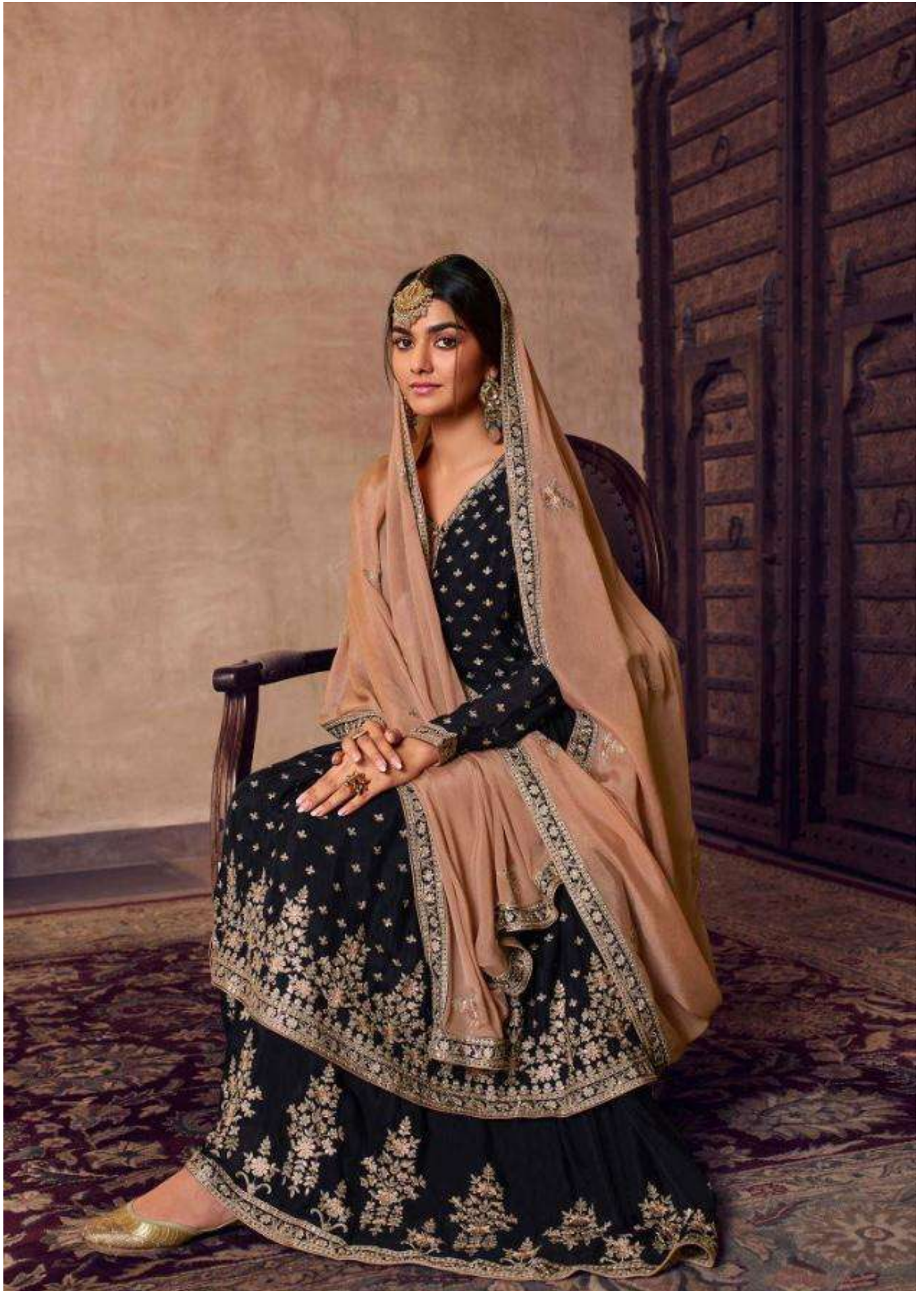




Glossy

*Layering is the newest trend this season,
style it in your way and be a star
at wedding!*

—◆ D.NO-551 ◆—

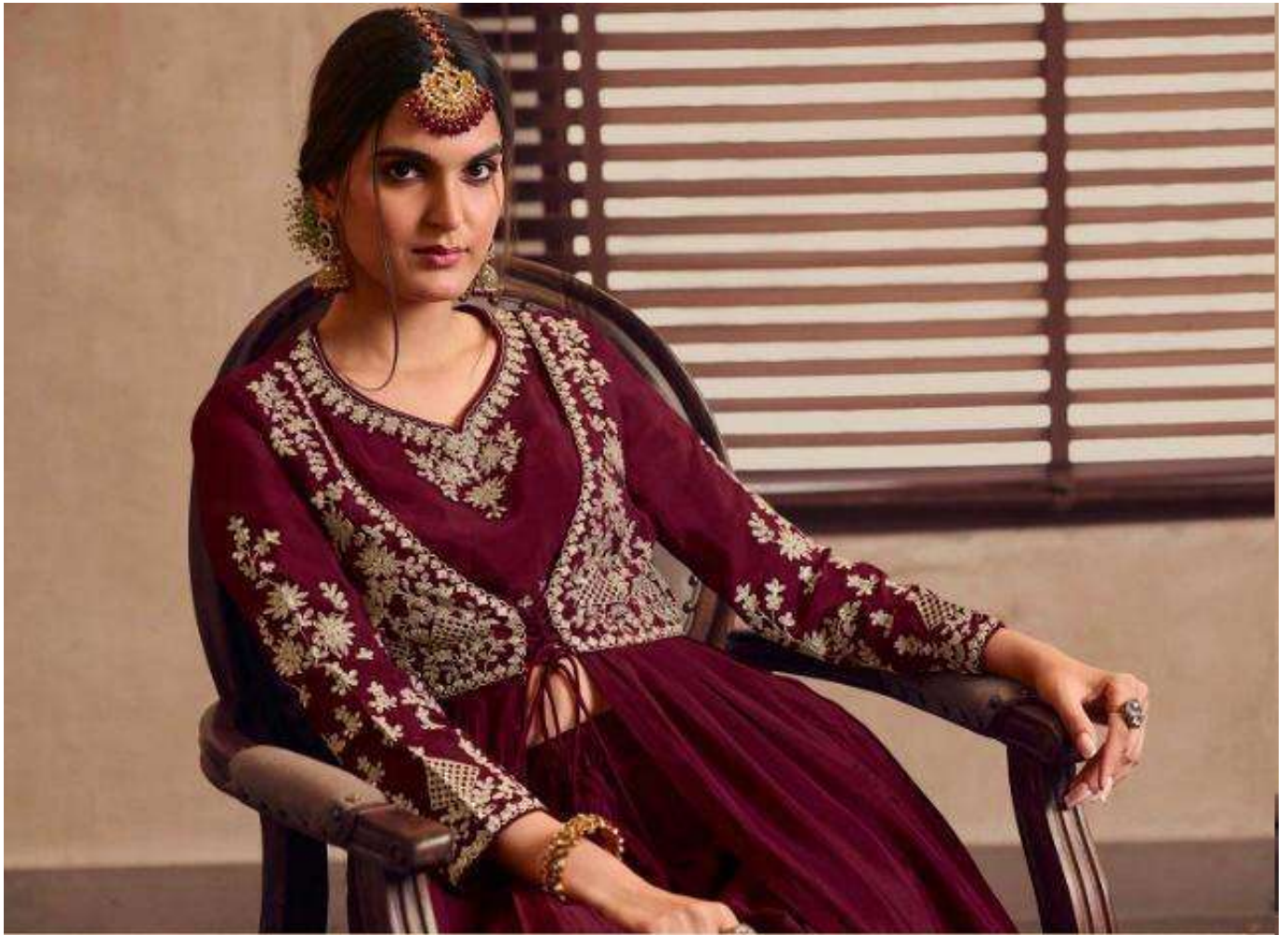




Glossy

*Elegance is a statement, an attitude,
full of spirit and confidence. Elegance
never goes out of style!*

D.NO-552



Glossy

Elegance is a statement, an attitude, full of spirit and confidence. Elegance never goes out of style!

D.NO-552



D.NO-549



D.NO-550



D.NO-551



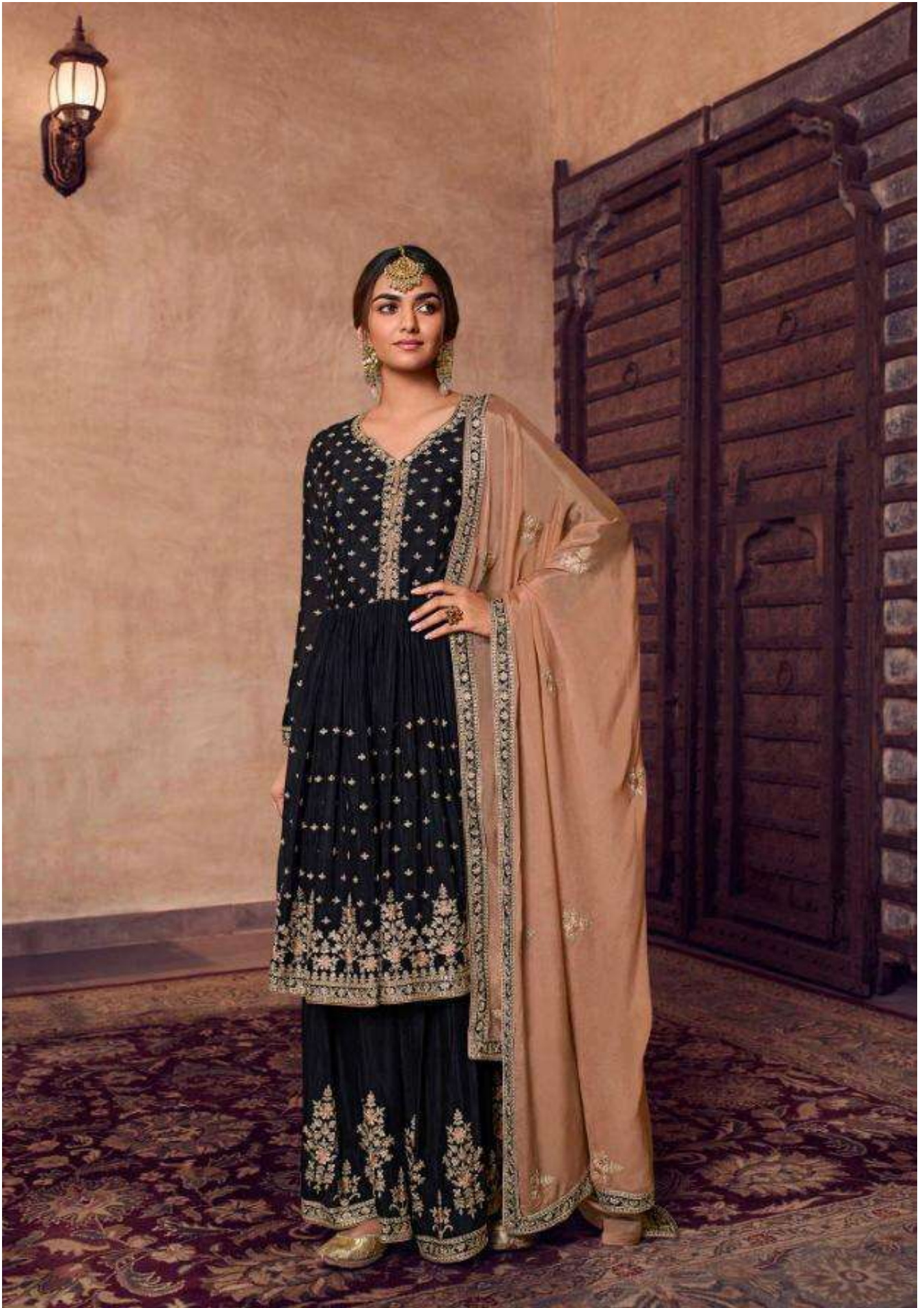
D.NO-552



D.NO-553



Glossy
SHARARA

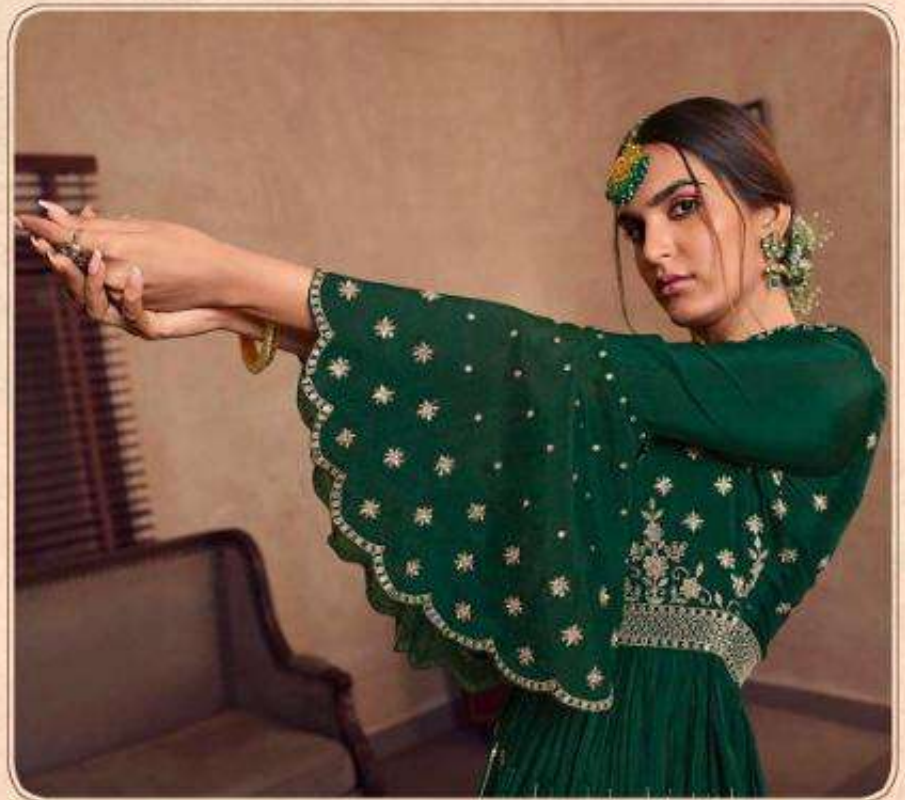




Glossy

*Pastel being the preferable pick of
the season has become every to-be bride's game
changing ensemble.*

D.NO-553



SHAMAA

PRODUCT DETAILS

TOP

PURE CHINON
EMBROIDERY WORK

BOTTOM

PURE CHINON
EMBROIDREY WORK

DUPATTA

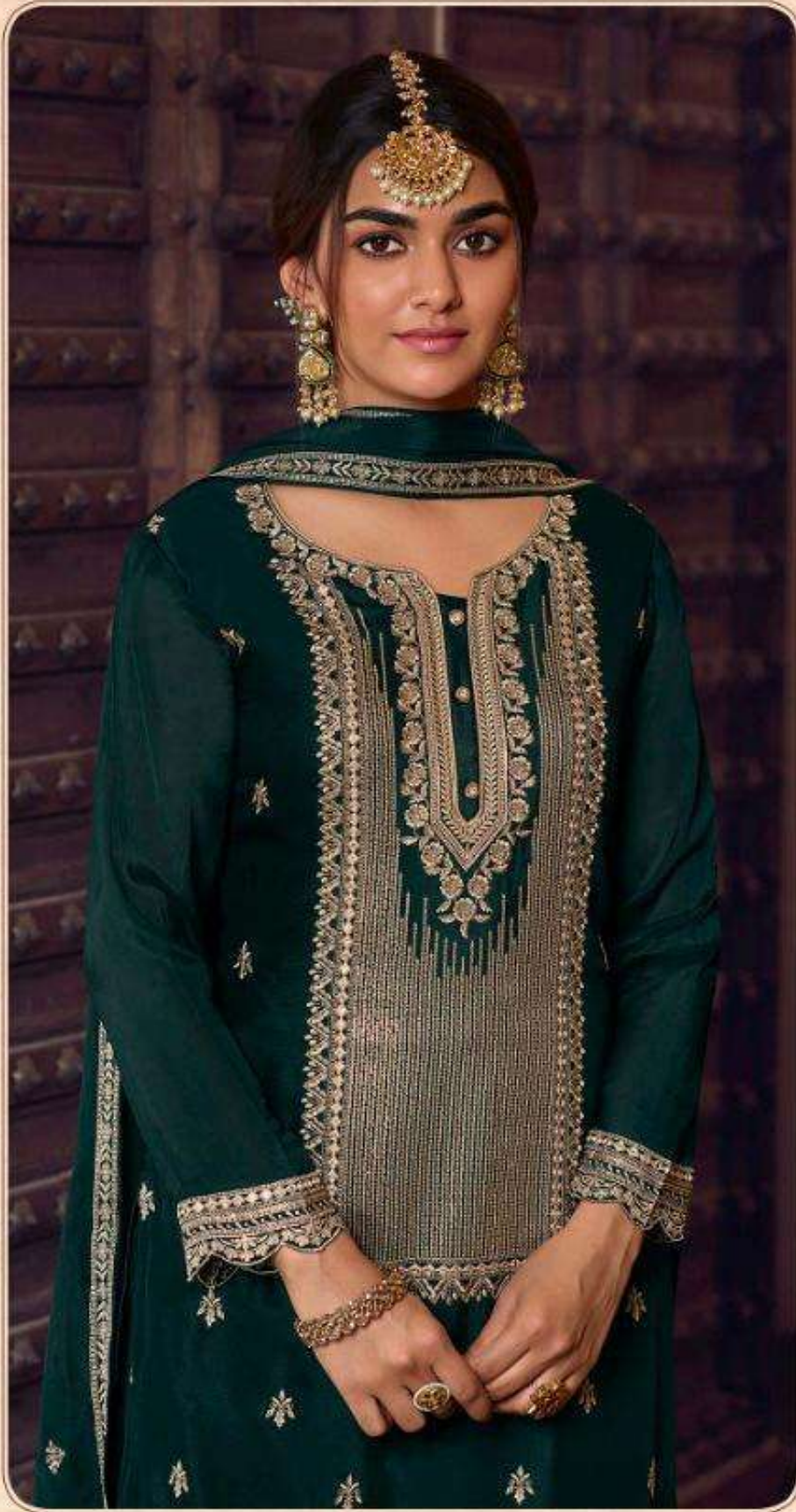
PURE CHINON
EMBROIDERY WORK

CURATED BY

SHIMAR[®]

g[®]

S G CREATIONS



Glossy

Inspired from the rich crafts of Indian architecture, this heavily worked outfit has all charm to make you shine!

D.NO-549