









शुभकला

Flory

Vol-22



ॐ bhkala





Swastika bhkala



This beautiful collection mingles both contemporary style with an amazing galore of colors and ethnicity for every festival.

4761



ॐ bhkala



This beautiful collection mingles both contemporary style with an amazing galore of colors and ethnicity for every festival.

4762





Swastika bhkala



This beautiful collection mingles both contemporary style with an amazing galore of colors and ethnicity for every festival.

4762



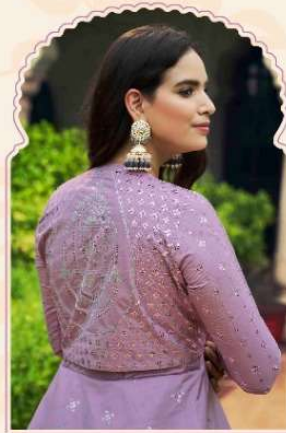
bhkala

This beautiful collection mingles both contemporary style with an amazing gamut of colors and ethnicity for every festival.

4763



Swastika bhkala



This beautiful collection mingles both contemporary style with an amazing galore of colors and ethnicity for every festival.

4763





ॐ bhkala

4765

This beautiful collection mingles both contemporary style with an amazing galore of colors and ethnicity for every festival.









4766



This beautiful collection mingles both contemporary style with an amazing galore of colors and ethnicity for every festival.

4767





ॐ bhkala

4768

This beautiful collection mingles both contemporary style with an amazing galore of colors and ethnicity for every festival.







4761



4762



4763



4764



4765



4766



4767



4768



4769

શ્રુભકલા

Design NO. (SKU)	Gown & Inner Color	Koti Color	Gown Fabric	Koti Fabric	Inner Fabric	Gown Work	Koti Work	SIZE (SEMI - STITCHED)	Top Length INCH	Inner Length MTR	Koti Length
4761	Mustard Yellow	Multi	Cotton	Cotton	Silk Crepe	Sequin Embroidered Work	Thread With Sequin Embroidered	Semi Stitched (Customized from 34 to 46)	58	3	15 INCH
4762	Dusty Green	Multi	Cotton	Cotton	Silk Crepe	Sequin Embroidered Work	Thread With Sequin Embroidered	Semi Stitched (Customized from 34 to 46)	58	3	15 INCH
4763	Light Purple	Light Purple	Cotton	Cotton	Silk Crepe	Sequin Embroidered Work	Thread With Sequin Embroidered	Semi Stitched (Customized from 34 to 46)	58	3	15 INCH
4764	Chiku	Multi	Cotton	Cotton	Silk Crepe	Sequin Embroidered Work	Thread With Sequin Embroidered	Semi Stitched (Customized from 34 to 46)	58	3	15 INCH
4765	White	Multi	Cotton	Cotton	Silk Crepe	Sequin Embroidered Work	Thread With Sequin Embroidered	Semi Stitched (Customized from 34 to 46)	58	3	15 INCH
4766	Rani	Multi	Cotton	Cotton	Silk Crepe	Sequin Embroidered Work	Thread With Sequin Embroidered	Semi Stitched (Customized from 34 to 46)	58	3	15 INCH
4767	Yellow	Rani	Cotton	Cotton	Silk Crepe	Sequin Embroidered Work	Thread With Sequin Embroidered	Semi Stitched (Customized from 34 to 46)	58	3	15 INCH
4768	Peach	Peach	Cotton	Cotton	Silk Crepe	Sequin Embroidered Work	Thread With Sequin Embroidered	Semi Stitched (Customized from 34 to 46)	58	3	15 INCH
4769	Dusty Orange	Multi	Cotton	Cotton	Silk Crepe	Sequin Embroidered Work	Thread With Sequin Embroidered	Semi Stitched (Customized from 34 to 46)	58	3	15 INCH

DUPATTA NOT AVAILABLE. • CAN-CAN NOT AVAILABLE. • FULL STITCHING AVAILABLE.

KOTI – STITCHED (42-XL SIZE). (ONLY KOTI STITCHED)















