

The logo for Shree FABS features a stylized red and white 'S' symbol to the left of the word 'Shree' in a colorful, multi-colored font. Below 'Shree' is the word 'FABS' in a white, sans-serif font, enclosed in a dark rectangular box. A small 'TM' trademark symbol is positioned to the upper right of 'Shree'.

ShreeTM
FABS



KASHMIRA



Shree
FABRI



1002



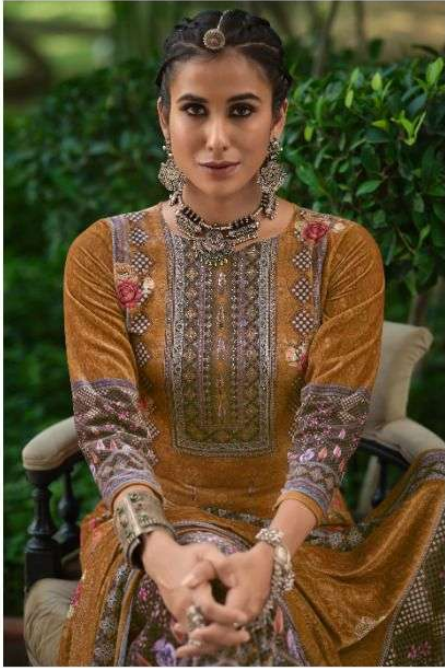
1001



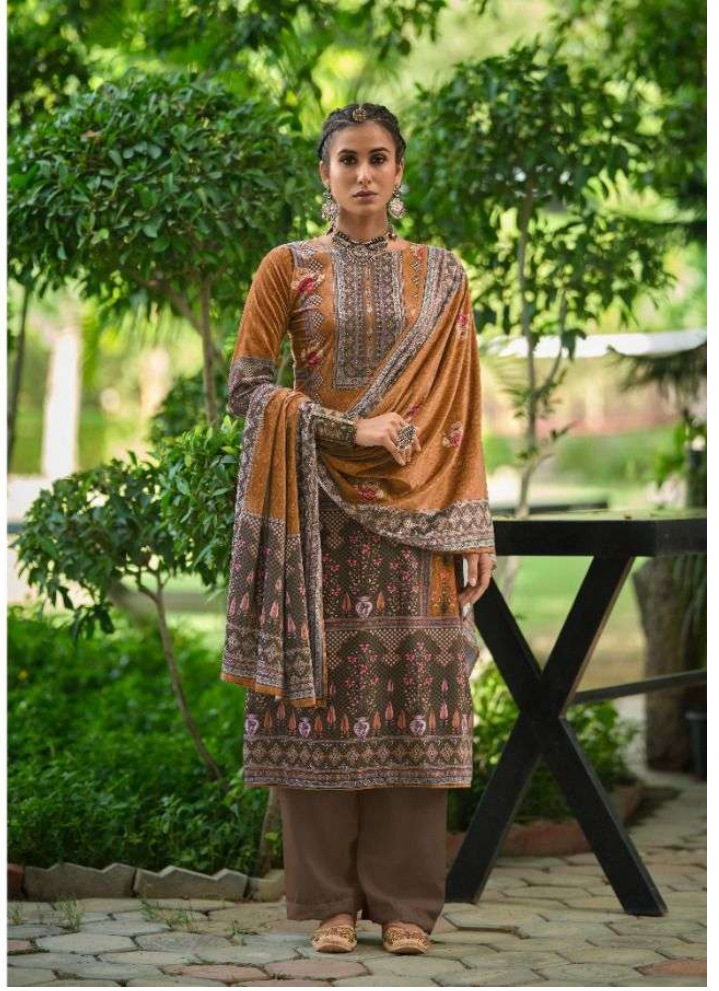


1004





1003





1006



Shree
FAB
1005





1001



1002



1005



1006



1003



1004


KASHMIRA

The logo for Shree FABS features a stylized red and white 'S' symbol to the left of the word 'Shree' in a colorful, multi-colored font. Below 'Shree' is the word 'FABS' in a white, sans-serif font on a dark rectangular background.

ShreeTM
FABS



KASHMIRA