

**RAJPATH**  
"The Secret of Style"



*Angelina*  
Copper & sate kanchisaram silk

**RAJPATH**  
"The Secret of Style"



*Angelina*  
Copper & sode kanchisaram silk

**RAJATH**  
The Secret of Style

10043

*Cooper, 2 side kanchinaran silk*





**RASPATH**  
"The Secret of Style"

UNVEILING THE IMPERIALE COLLECTION

*Copper 2 side kanchevaram silk*

after a few seasons

of minimalism, designers

are unleashing their crafty

side: banarasi suede and fringes

dominate this trend.

quite the contrary, in fact



UNVEILING THE IMPERIALE COLLECTION  
*Copper, Sade, Kanchevaram silk*

after a few seasons  
of minimalism, designers  
are unleashing their crafty  
side. banarasi suede and fringes  
dominate this trend.  
quite the contrary, in fact.









**RAPATH**  
The Secret of Style™

10044

*Copper & sate kanchivanam silk*



UNVEILING THE IMPERIALE COLLECTION  
*Copper 2 sade kanchivaram silk*

after a few seasons  
of minimalism, designers  
are unleashing their crafty  
side, banarasi suede and fringes  
dominate this trend  
quite the contrary, in fact

**RAPATH**  
The Dress of S...

10045

*Copper 2 sade kanchivaram silk*

**RAPATH**  
The Secret of Style

10042

*Copper & saide kanchipuram silk*





10041



10042



10043



10044



10045



10046

**RAPATH**  
The Secret of Style

10046

*Copper & sage kanchi saree silk*





UNVEILING THE IMPERIALE COLLECTION  
*Copper Suede Kanchivaram silk*

After a few seasons  
of minimalism, designers  
are unleashing their crafty  
side. Banarasi suede and fringes  
dominate this trend.  
Quite the contrary, in fact.

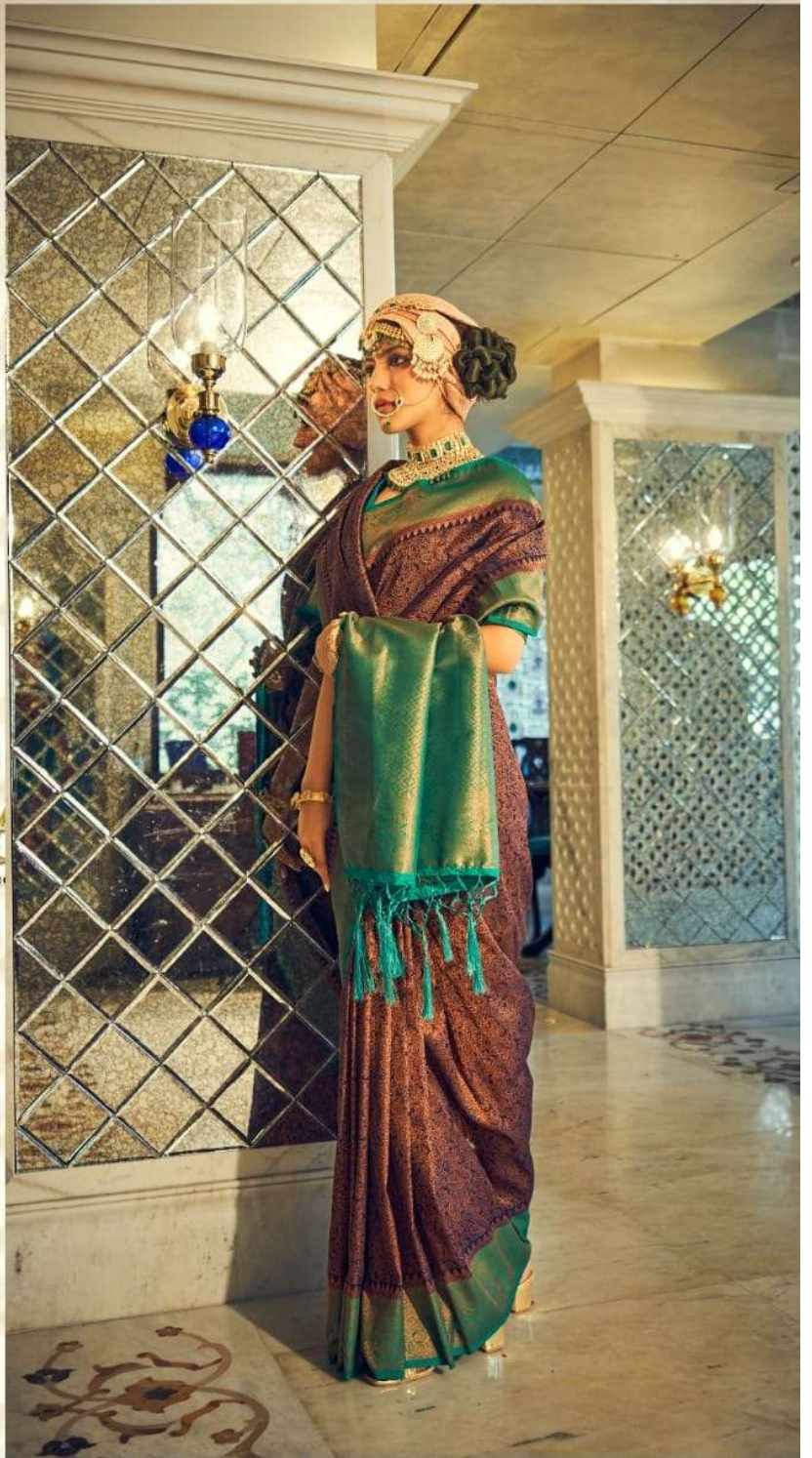


UNVEILING THE IMPERIALE COLLECTION  
*Coppis & sade kanchivaram silk*

after a few seasons  
of minimalism, designers  
are unleashing their crafty  
side. banarasi suede and fringes  
dominate this trend.  
quite the contrary, in fact.

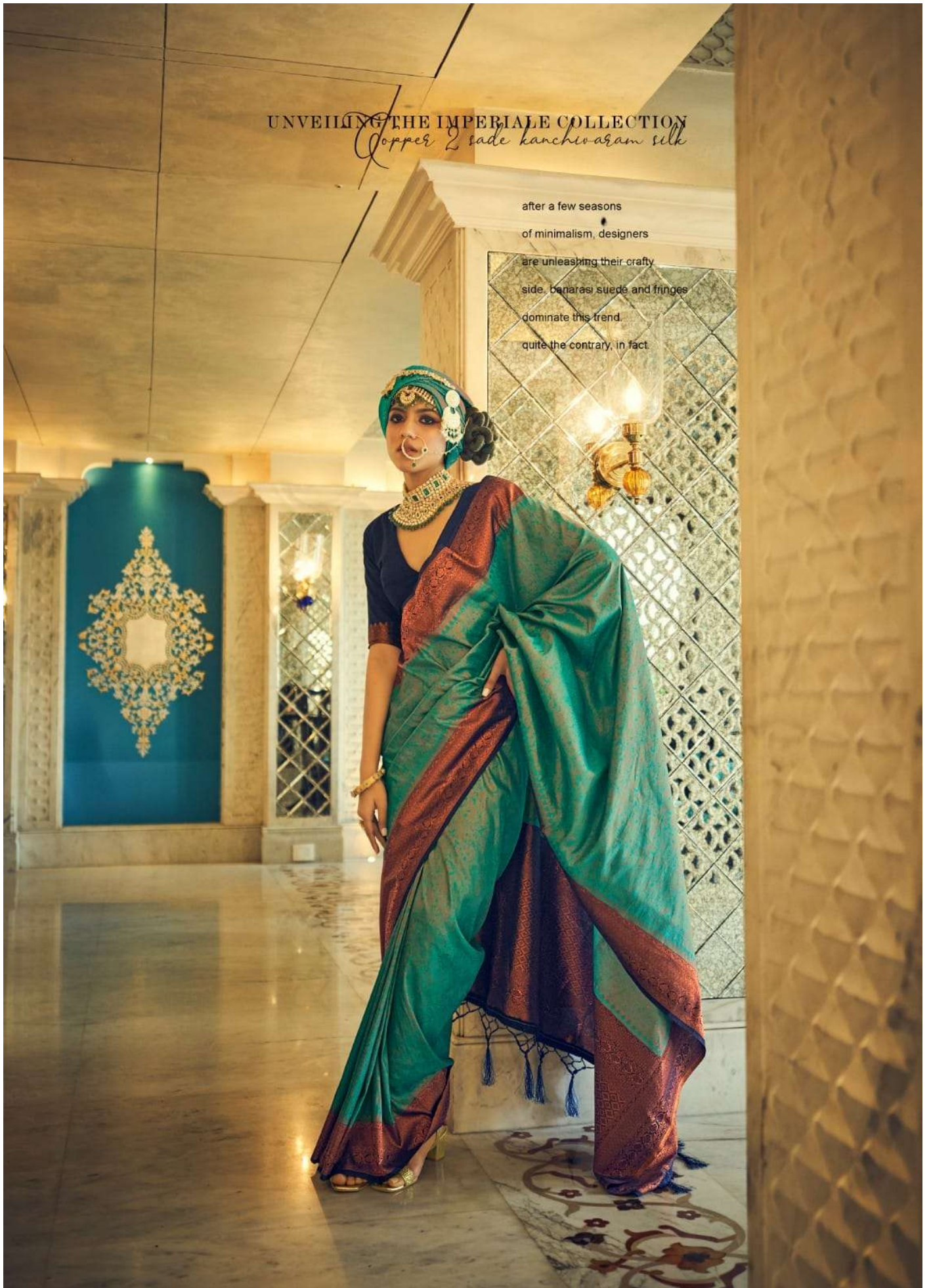






UNVEILING THE IMPERIALE COLLECTION  
*Copper & sate kanchivaram silk*

after a few seasons  
of minimalism, designers  
are unleashing their crafty  
side. banarasi suede and fringes  
dominate this trend.  
quite the contrary, in fact





UNVEILING THE IMPERIALE COLLECTION  
*Copper 2, sate kancheraram silk*

after a few seasons  
of minimalism, designers  
are unleashing their crafty  
side. banarasi suede and fringes  
dominate this trend.  
quite the contrary, in fact.





**RAJPATH**  
"The Secret of Style"

10041

*Copper 2 rade kanchipuram silk*





UNVEILING THE IMPERIALE COLLECTION  
*Copper & saide kanchivaram silk*

after a few seasons  
of minimalism, designers  
are unleashing their crafty  
side. banarasi suede and fringes  
dominate this trend.  
quite the contrary, in fact.