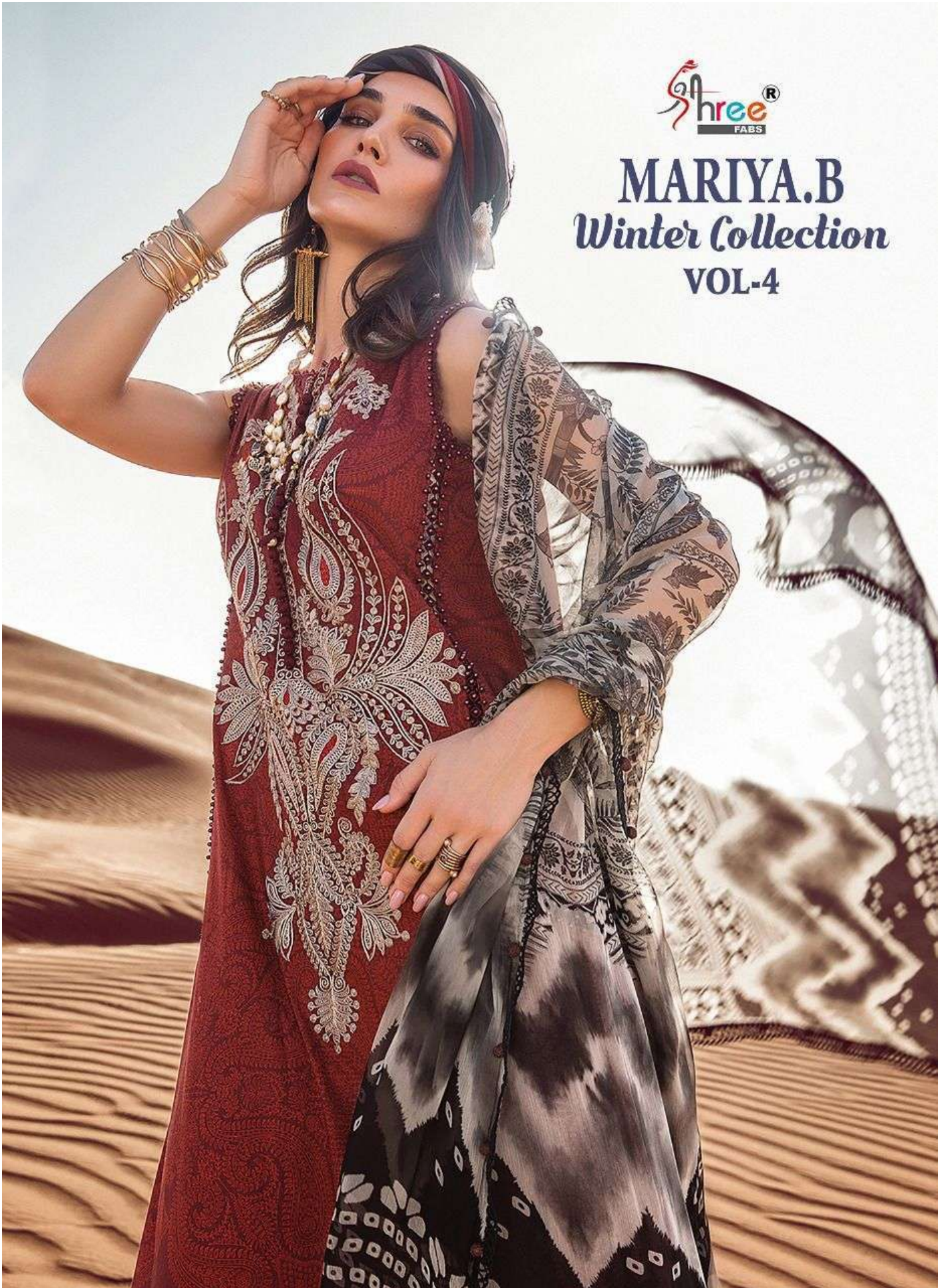




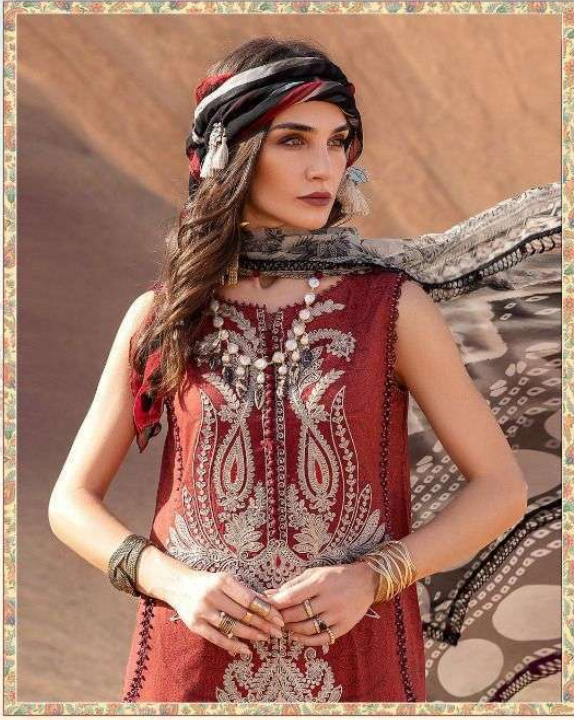
MARIYA.B
Winter Collection
VOL-4





MARIYA.B
Winter Collection
VOL-4

Shree
FABRI



2432

MARIYA.B
Winter Collection
VOL-4

Shree
FAB





MARIYA.B
Winter Collection
VOL-4





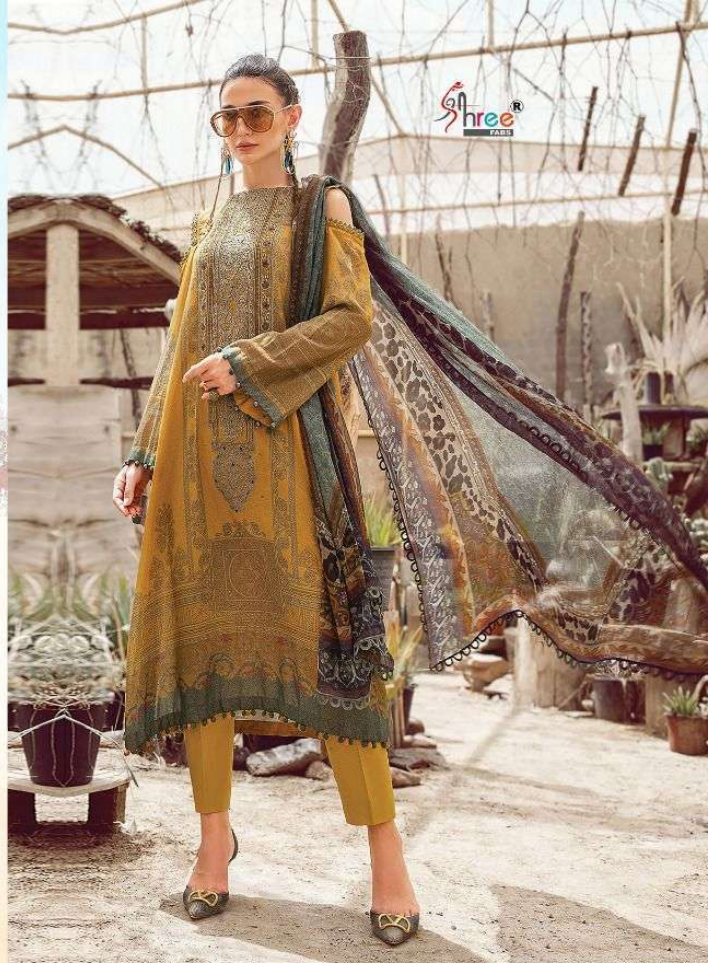
Shree[®]
LAKH

MARIYA.B
Winter Collection
VOL-4



2433

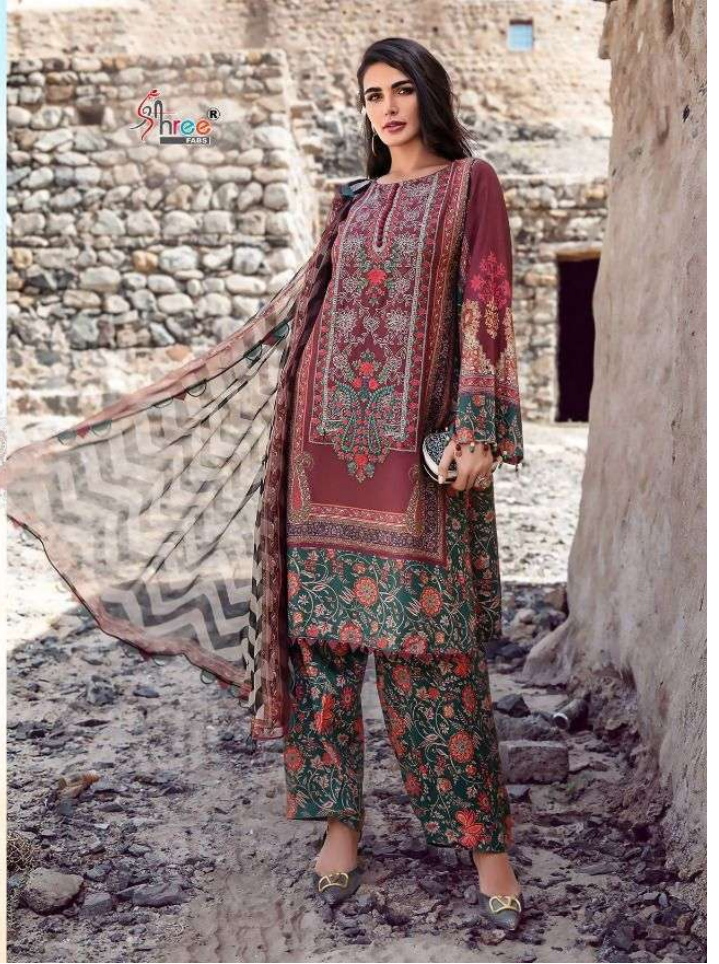
MARIYA.B
Winter Collection
VOL-4

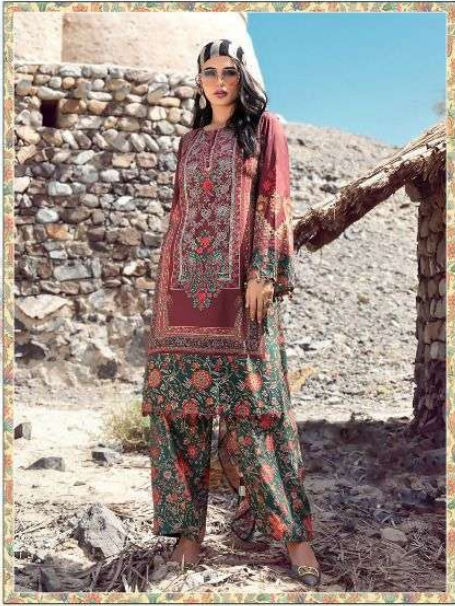




2434

MARIYA.B
Winter Collection
VOL-4





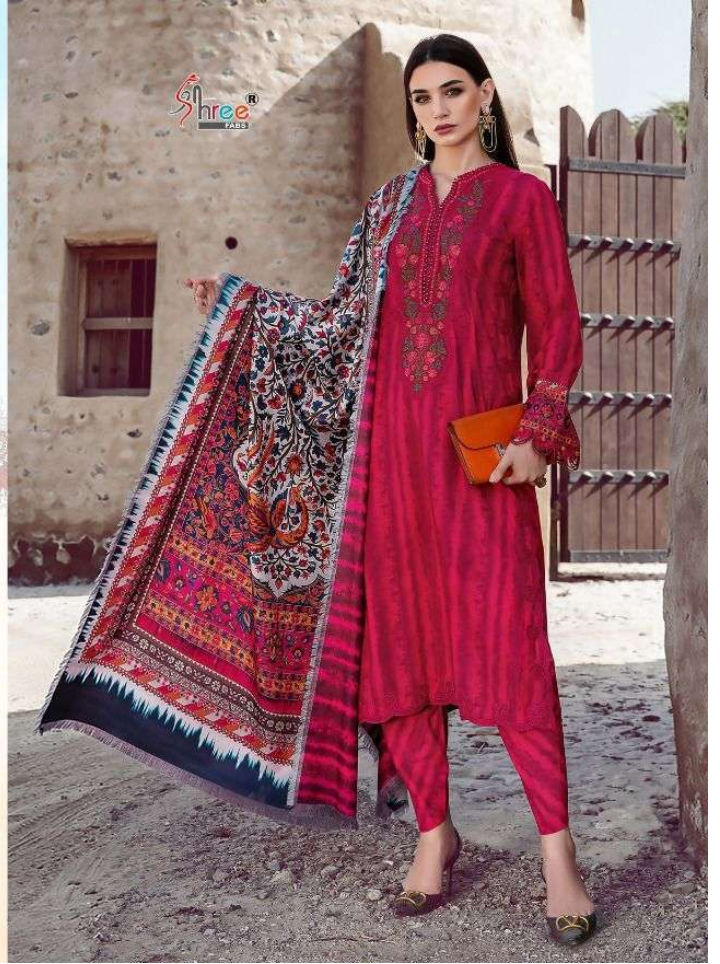
Shree®
ZARA

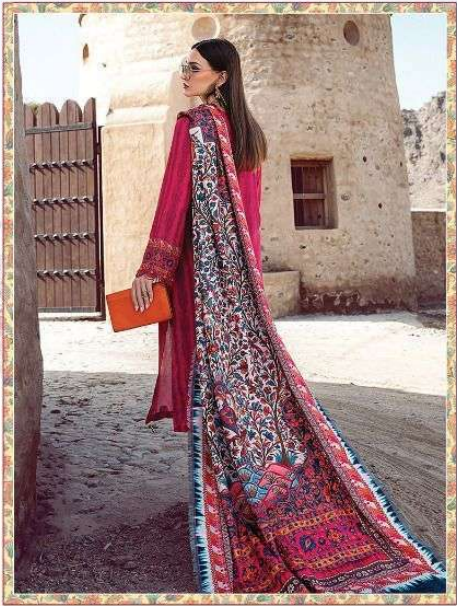
MARIYA.B
Winter Collection
VOL-4



2435

MARIYA.B
Winter Collection
VOL-4





Shree
FACED

MARIYA.B
Winter Collection
VOL-4

A smaller version of the woman in the red dress is shown within a decorative, multi-colored border. The woman is holding a small orange clutch bag. The background is the same rustic stone building. The text 'Shree FACED' is visible in the top left corner of the frame, and 'MARIYA.B Winter Collection VOL-4' is written in the bottom right corner.



MARIYA.B
Winter Collection
VOL-4





2436

MARIYA.B
Winter Collection
VOL-4



Shree
FABRI



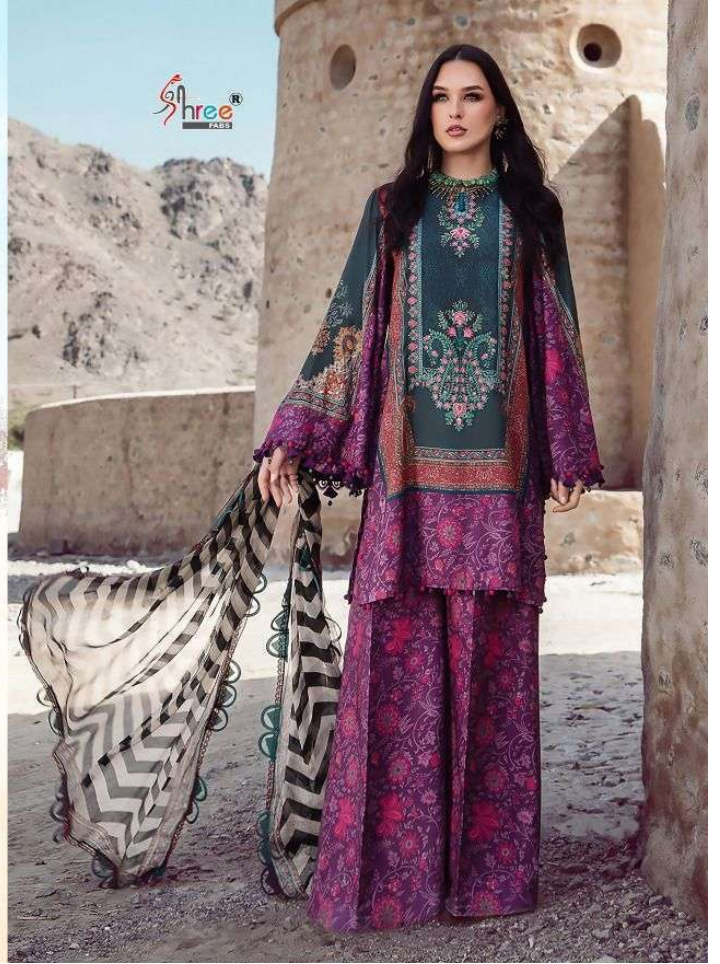
MARIYA.B
Winter Collection
VOL-4





2437

MARIYA.B
Winter Collection
VOL-4



Shree
FABRI



2431



2432



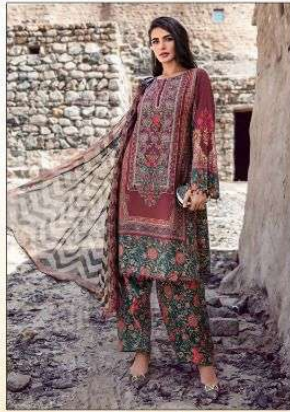
2435



2436



2433



2434

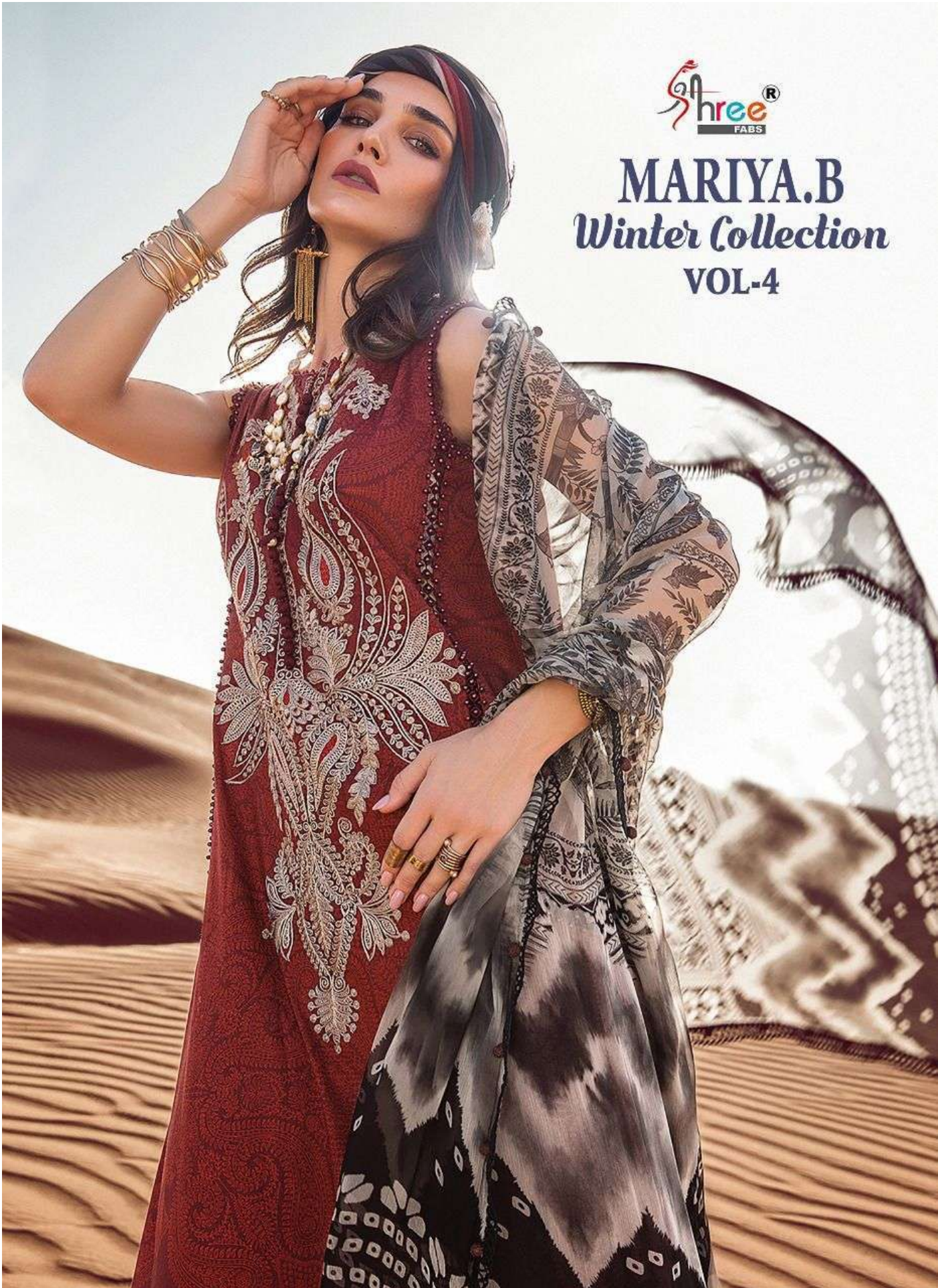


2437

Shree®
MARIYA.B
Winter Collection
 VOL-4



MARIYA.B
Winter Collection
VOL-4





2431

MARIYA.B
Winter Collection
VOL-4

