

A woman with dark hair pulled back, wearing a saree with a complex paisley pattern in shades of brown, beige, and purple. She is adorned with large, ornate silver earrings and matching rings. The background is a soft, neutral-toned studio backdrop.

Om.lex[®]

REFINING ETHNICITY

SWAPAN



PRODUCT NAME

SWAPAN

DESIGN NO.

1111-A TO 1111-D

TOP:

PASHMINA DIGITAL PRINT WITH HAND WORK

BOTTOM:

PASHMINA

DUPPATTA:

PASHMINA DIGITAL PRINT SHAWL

Om.lex[®]
REFINING ETHNICITY

www.omtex.in



SWAPAN

by

Om.lex[®]

REFINING. ETHNICITY

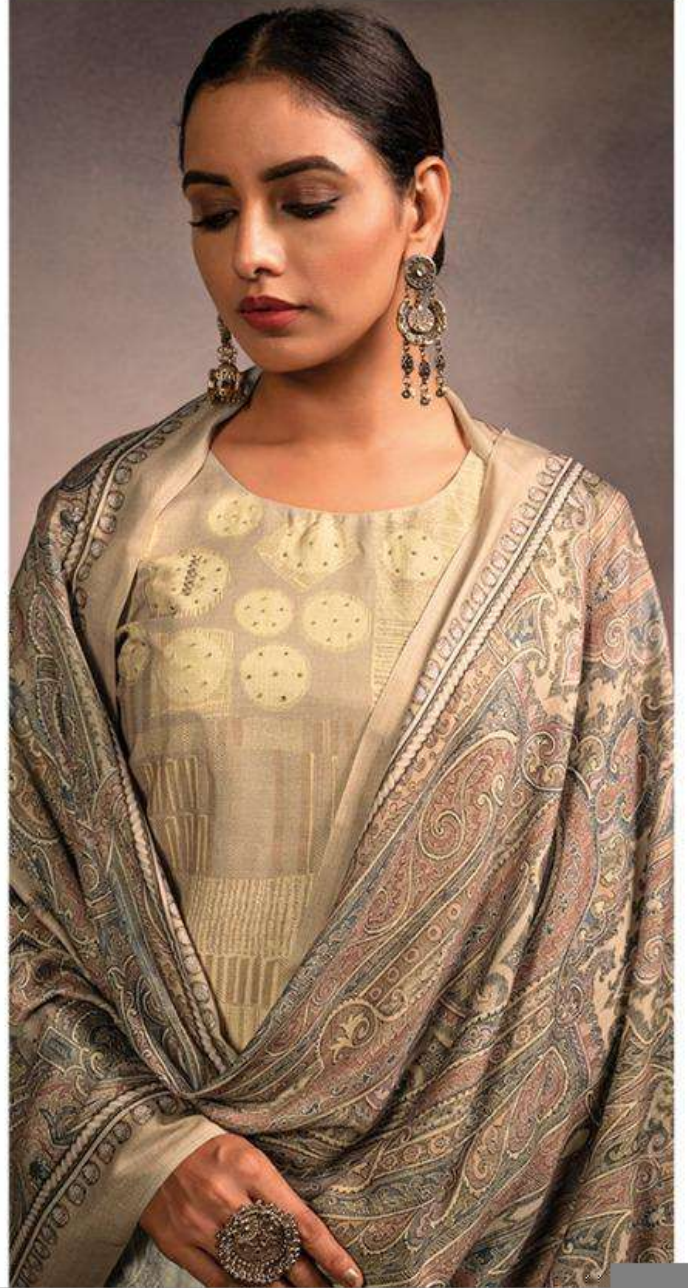
DESIGN NO.		DESCRIPTION	PRICE
1111-A	TOP :	PASHMINA DIGITAL PRINT WITH HAND WORK	1195/-
1111-B	BOTTOM :	PASHMINA	1195/-
1111-C	DUPPATA :	PASHMINA DIGITAL PRINT SHAWL	1195/-
1111-D			1195/-
TOTAL PCS : 4		www.omtex.in	4780/-

SWAPAN

by

Om Lex®

REFINING ETHNICITY



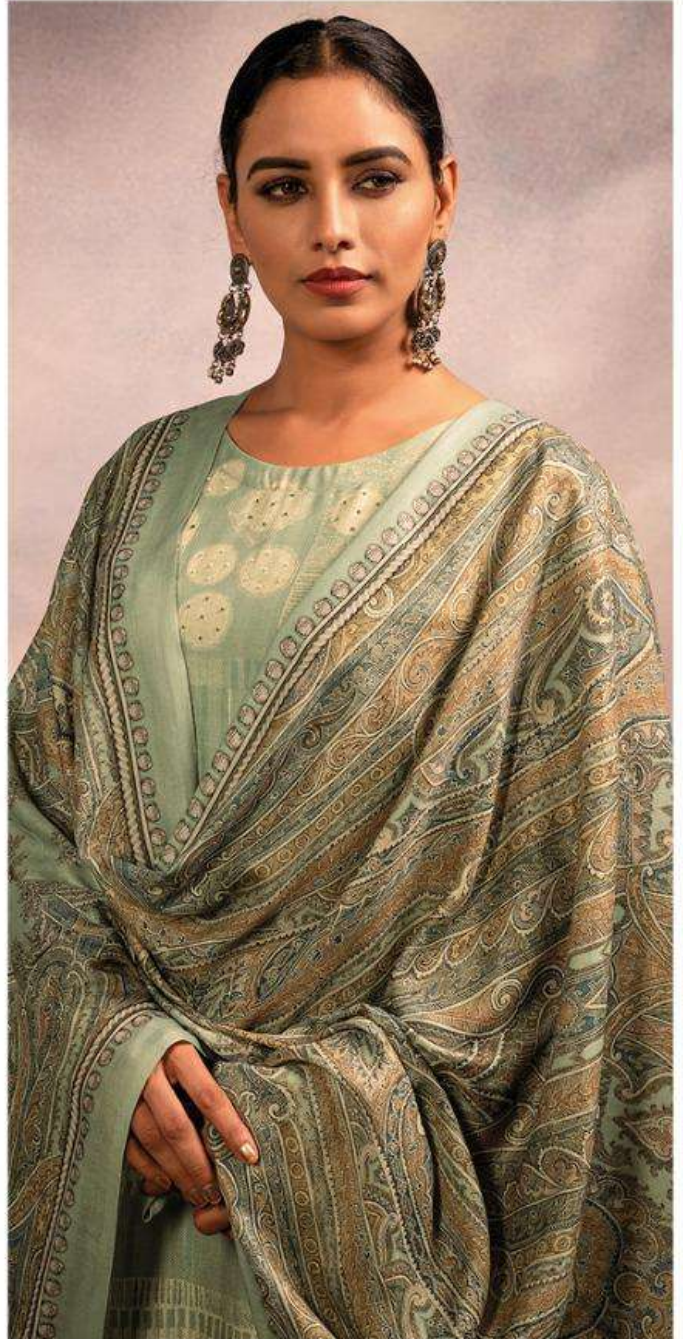
SWAPAN

by

Om Lex[®]
REFINING ETHNICITY



~1111 A~



~1111 B~



Om Lex[®]
REFINING ETHNICITY



~1111 D~



Om Lex
REFINING ETHNICITY



~1111 C~



Om Lex
REFINING ETHNICITY



~1111 B~



Om Lex[®]
REFINING ETHNICITY





Om Lex[®]

REFINING ETHNICITY

SWAPAN