

A woman is the central figure, wearing a dark green sari with a wide, ornate border in maroon and gold. The border features a complex geometric and floral pattern. Her blouse is maroon with a repeating diamond-shaped motif. She is adorned with a heavy gold necklace featuring a pink and green beaded strand, a matching choker, and large, ornate earrings. Her hair is styled in a bun with a gold and green headpiece. She is seated on a patterned rug, with a stone wall to her right and floral-patterned curtains in the background.

JOH RIVAAJ

JASRANI



  
**JOH RIVAAJ**

<b>JASRANI</b>		
<b>SR NO.</b>	<b>D NO.</b>	<b>RATE</b>
1	jasrani-17001	1695/-
2	jasrani-17002	1695/-
3	jasrani-17003	1695/-
4	jasrani-17004	1695/-
5	jasrani-17005	1695/-
6	jasrani-17006	1695/-
7	jasrani-17007	1695/-
8	jasrani-17008	1695/-
9	jasrani-17009	1695/-



JOH RIVAAJ



It is ever so much easier to be good if your clothes are fashionable • 17006



17001



17002



17003



17006



17007



17004



17005



17008

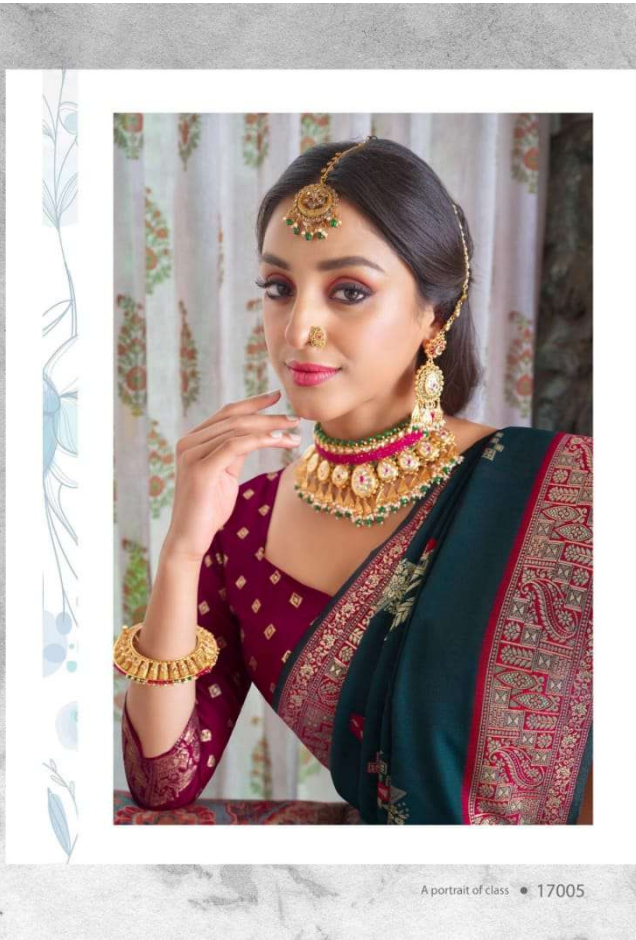


17009



17007 • we have developed our own designs over the years an accessible, elegant and always fresh.





A portrait of class • 17005

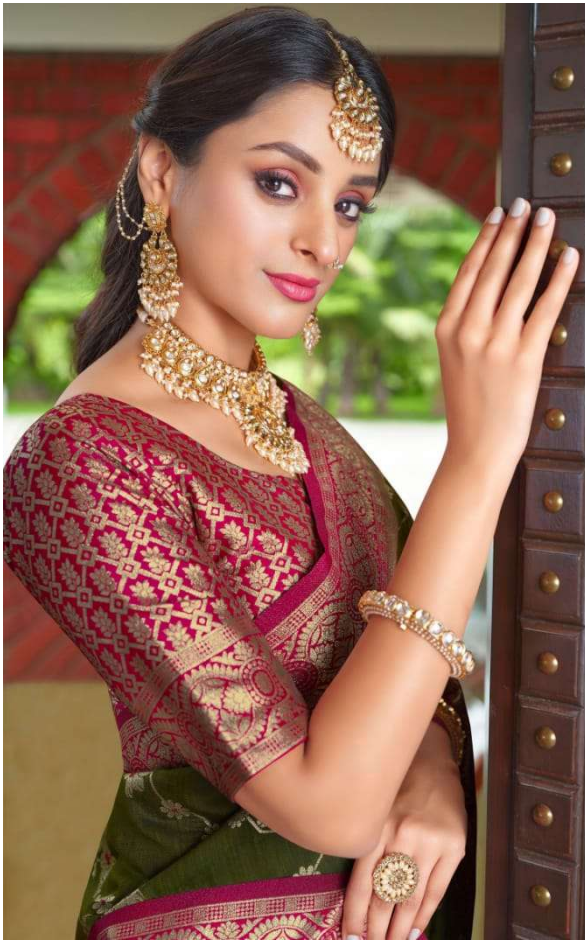


jc  
JOH RIVAAJ



A treasured memory • 17002









It is ever so much easier to be good if your clothes are fashionable. • 17004







17003 • A respectable appearance is sufficient to make people more interested in your soul





A woman is the central figure, wearing a dark green sari with a wide, ornate border in maroon and gold. The border features a complex geometric and floral pattern. Her blouse is maroon with a repeating diamond-shaped motif. She is adorned with a heavy gold necklace featuring a central floral pendant, a matching choker, large earrings, a forehead ornament, and multiple bangles and rings. The background consists of a wall with vertical floral patterns and a stone pillar on the right.

JOH RIVAAJ

JASRANI