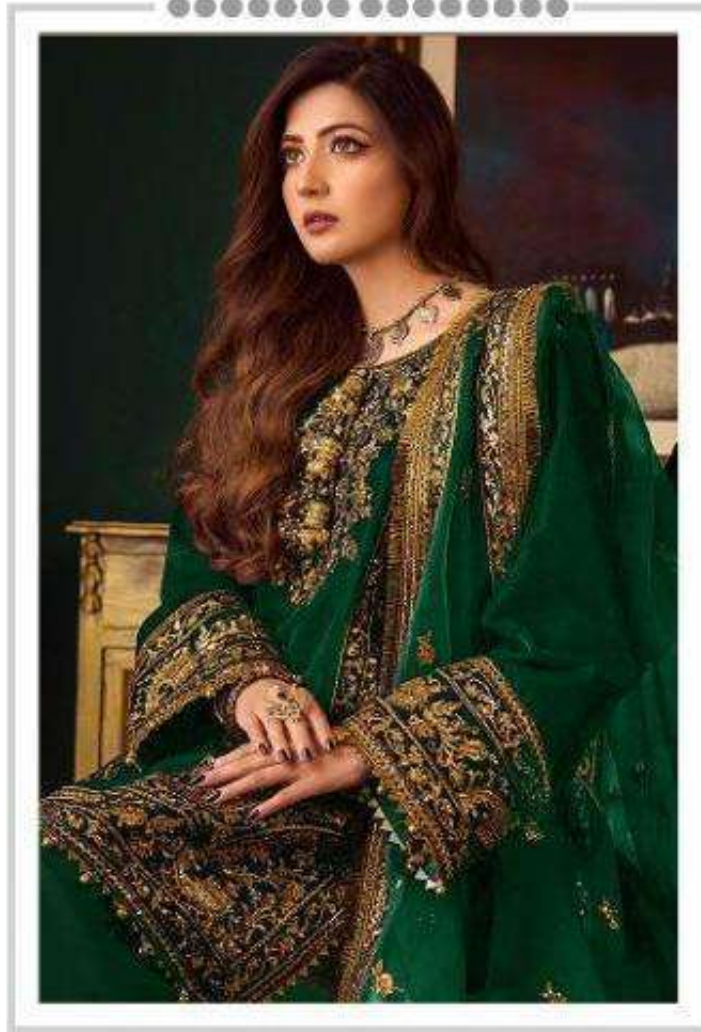



Ramsha[®]
470-NX





#R-470-A



TOP- FOX GEORGETTE WITH HEAVY EMBROIDERY
BOTTOM- DULL SANTOON
DUPATTA - NET WITH EMBROIDERY

- Ⓟ DRY CLEAN ONLY.
- ✂ DO NOT USE ANY BLEACH OR STAIN REMOVING CHEMICAL.
- ☎ IRON THE FABRIC AT MODERATE TEMPERATURE.





#R-470-B



TOP- FOX GEORGETTE WITH HEAVY EMBROIDERY
BOTTOM- DULL SANTOON
DUPATTA - NET WITH EMBROIDERY

- Ⓟ DRY CLEAN ONLY.
- ✘ DO NOT USE ANY BLEACH OR STAIN REMOVING CHEMICAL.
- ☎ IRON THE FABRIC AT MODERATE TEMPERATURE.





#R-470-C



TOP- FOX GEORGETTE WITH HEAVY EMBROIDERY
BOTTOM- DULL SANTOON
DUPATTA - NET WITH EMBROIDERY

- Ⓟ DRY CLEAN ONLY.
- ✂ DO NOT USE ANY BLEACH OR STAIN REMOVING CHEMICAL.
- ☎ IRON THE FABRIC AT MODERATE TEMPERATURE.





#R-470-D



TOP- FOX GEORGETTE WITH HEAVY EMBROIDERY
BOTTOM- DULL SANTOON
DUPATTA - NET WITH EMBROIDERY

- Ⓟ DRY CLEAN ONLY.
- ✘ DO NOT USE ANY BLEACH OR STAIN REMOVING CHEMICAL.
- ☎ IRON THE FABRIC AT MODERATE TEMPERATURE.



Ramsha®
470-NX



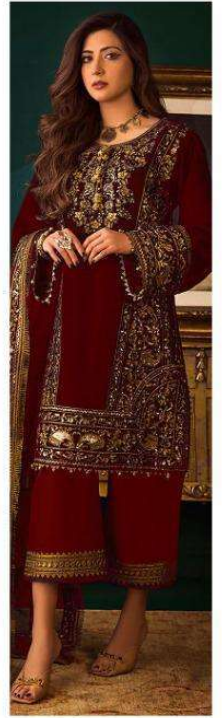
#R-470-A



#R-470-B

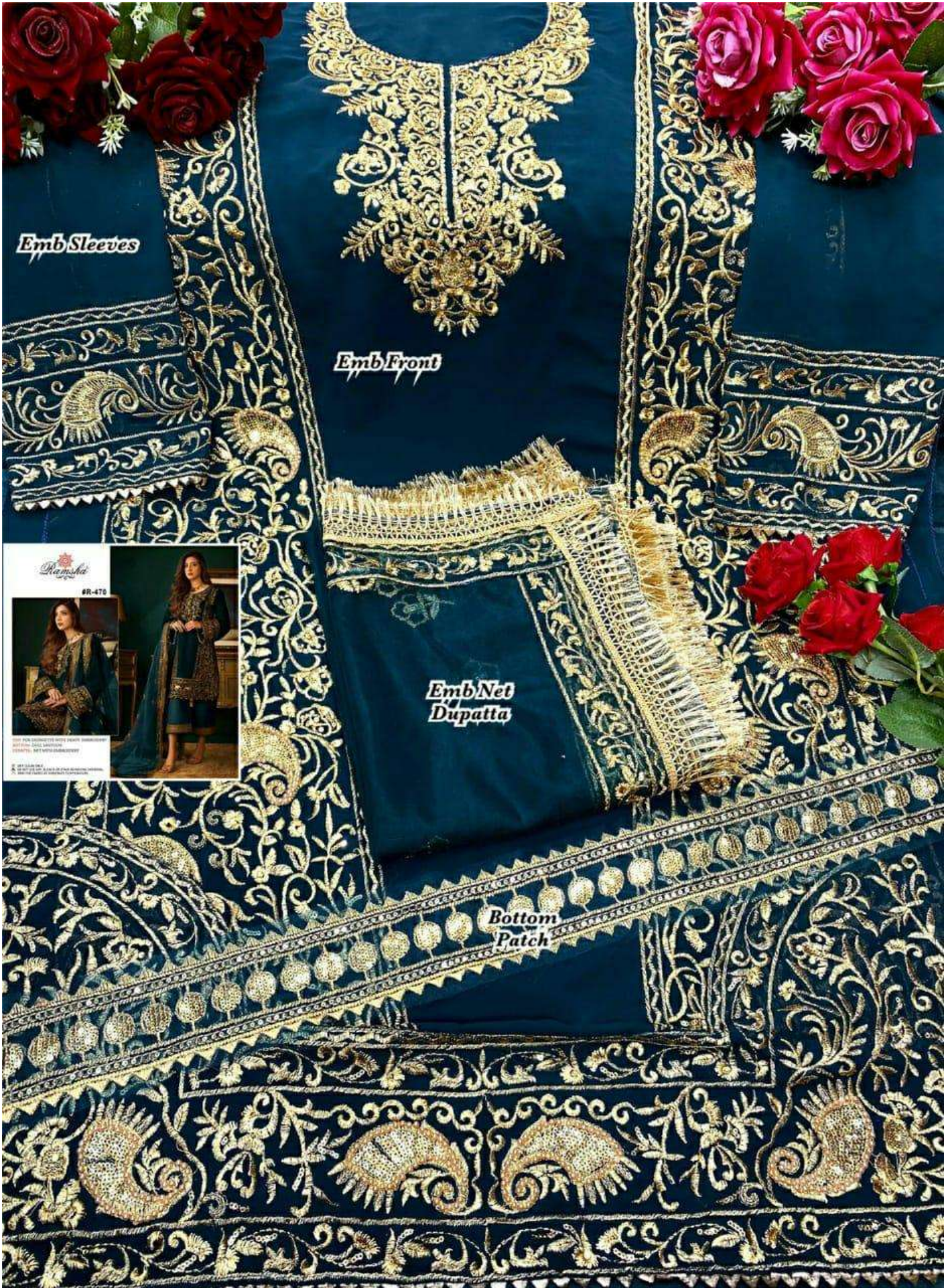


#R-470-C



#R-470-D

Ramsha®
470-NX



Emb Sleeves

Emb Front

Emb Net Dupatta

Bottom Patch



100% COTTON
100% SILK
100% WOOL
100% LINEN
100% JUTE
100% HEMP
100% RAYON
100% POLYESTER
100% NYLON
100% SPANDEX
100% CASHMERE
100% ALPACA
100% ANGORA
100% MOHAIR
100% SILK
100% WOOL
100% LINEN
100% JUTE
100% HEMP
100% RAYON
100% POLYESTER
100% NYLON
100% SPANDEX
100% CASHMERE
100% ALPACA
100% ANGORA
100% MOHAIR