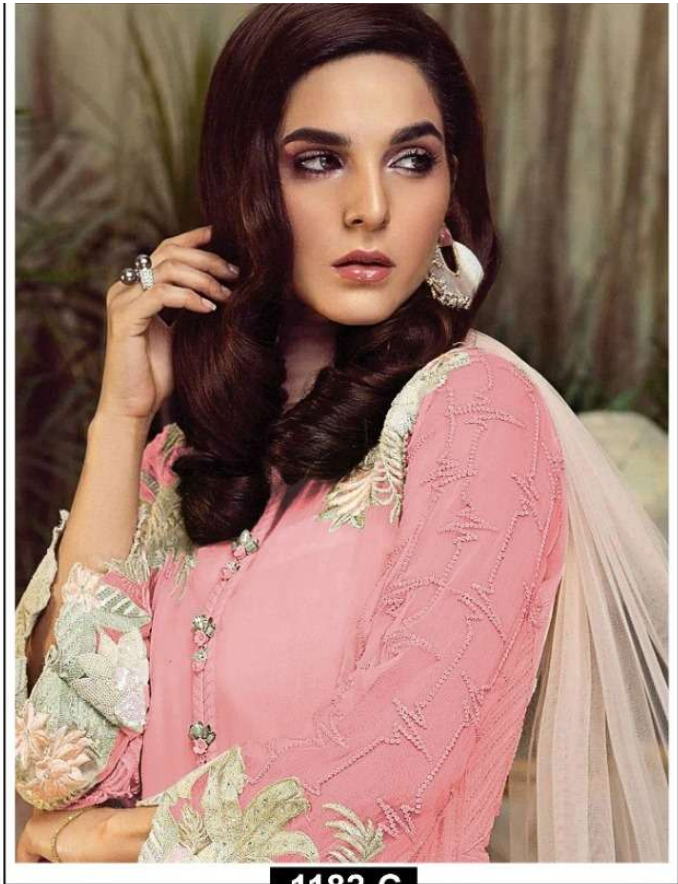
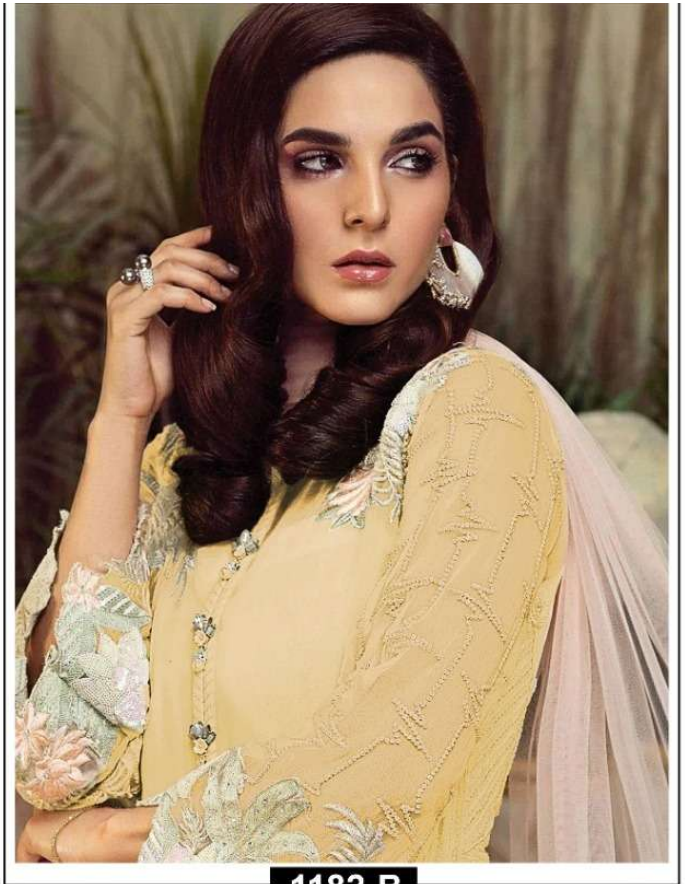




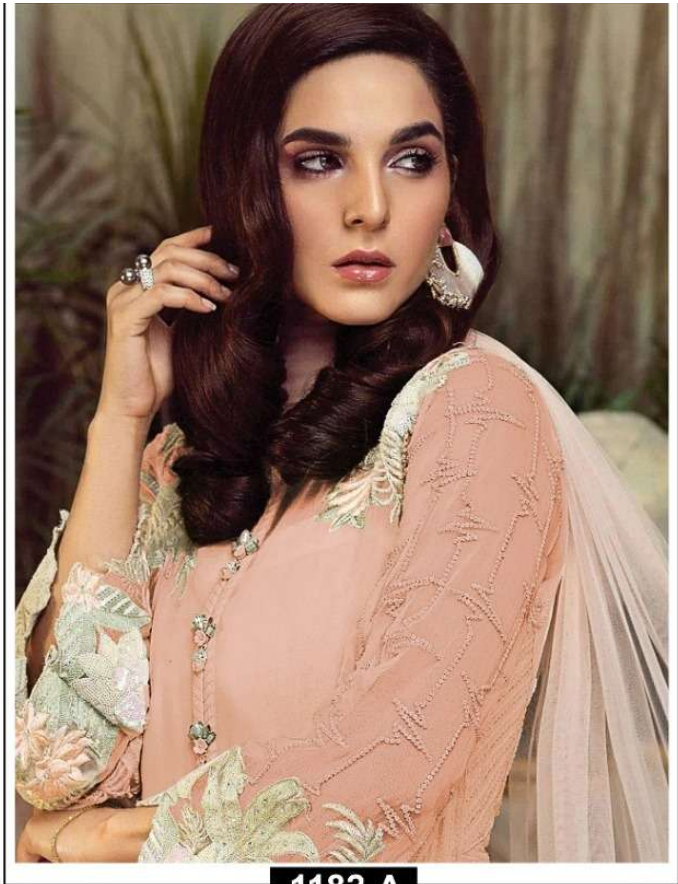
**MARIA.B**  
VOL-18



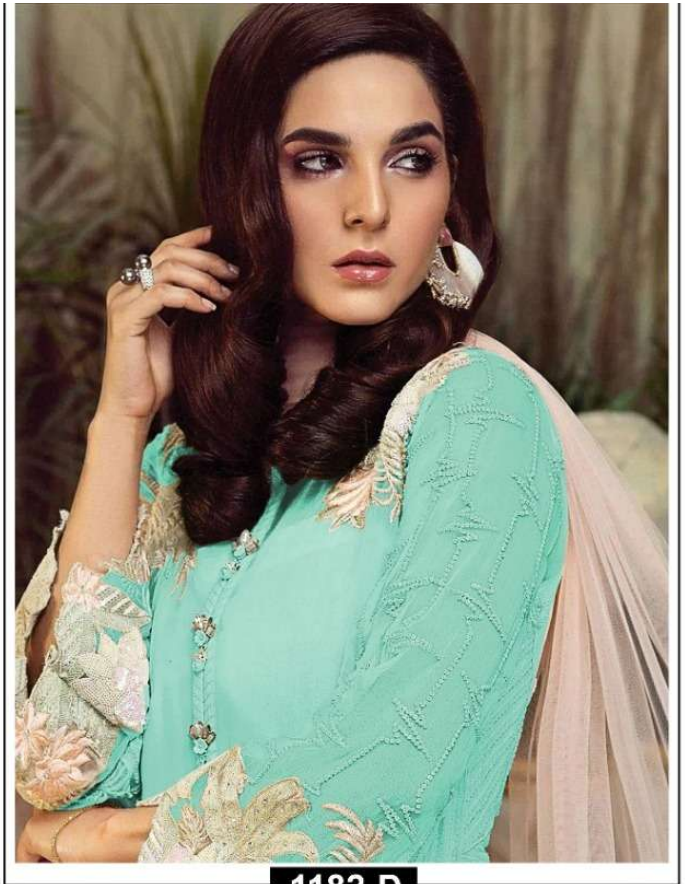
1182-C



1182-B



1182-A



1182-D



1182-A



1182-B



1182-C



1182-D

Namste Sirji!

After grand success & response

Our back to back catlog and all your loved  
and sound byres are

Good support so now we are

Launching new catlog

\* heavy embroidery looking

CATALOG; **MARIA V-18**

Fabrics — -Top-Fox georgette

Bott — Santoon

Inn — Santoon

Dup- Nazmin

Des----- 4 pcs only

Rate-----1199/-

Dishpatching--- **Wednesday**

Regards

**Majesty**

.....the joy of dressing

Thank you

Limited stock sir