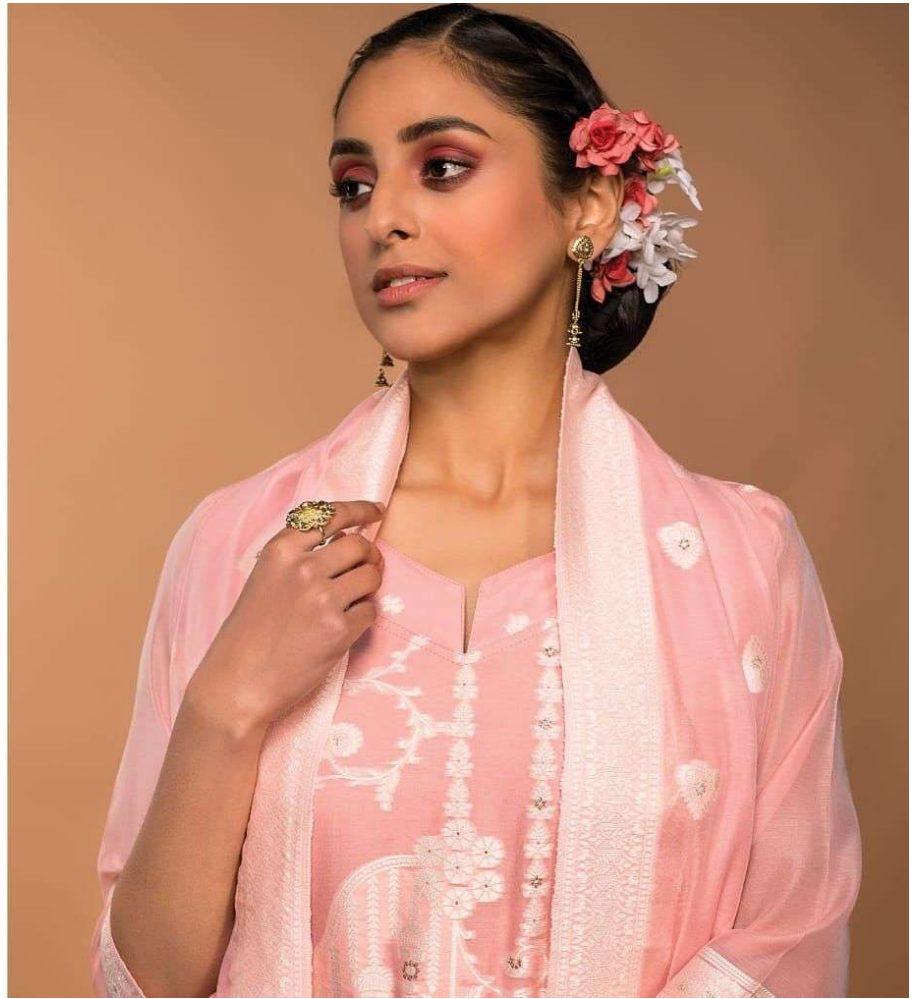


A woman with dark hair styled in a bun, adorned with a large floral hair accessory featuring pink and white roses. She is wearing a white and gold embroidered outfit with a keyhole neckline and a sheer white shawl with gold floral patterns. She has large, ornate gold earrings with a circular design and a pearl drop. The background is a solid brown color.

Rivāā[®]

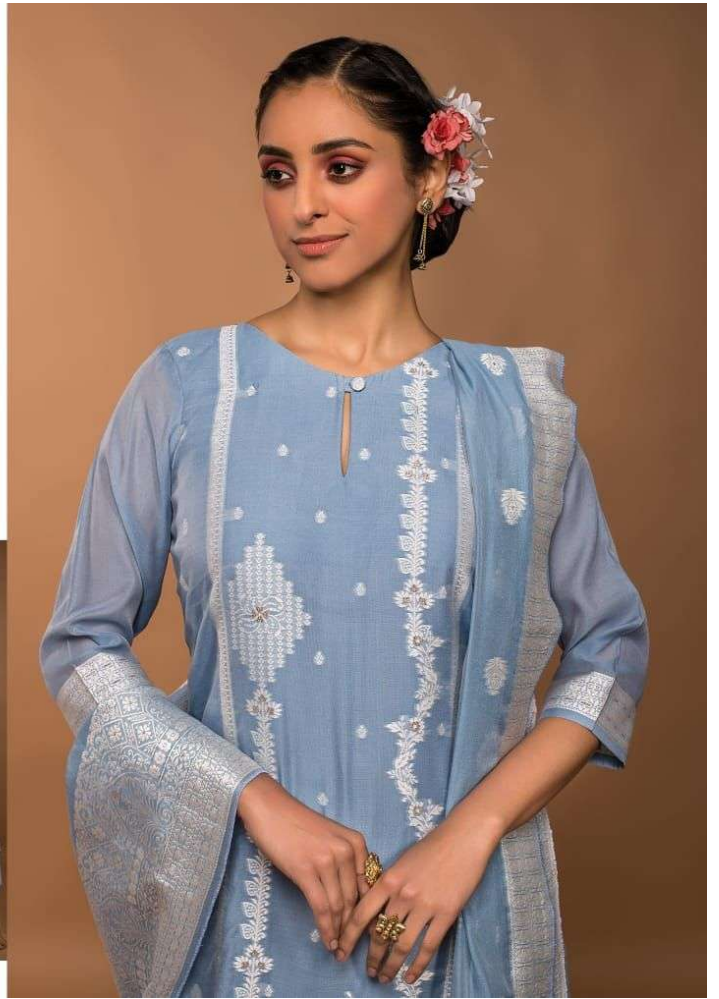
BINDIA 3

Rivāā[®]





2638





2639



2640





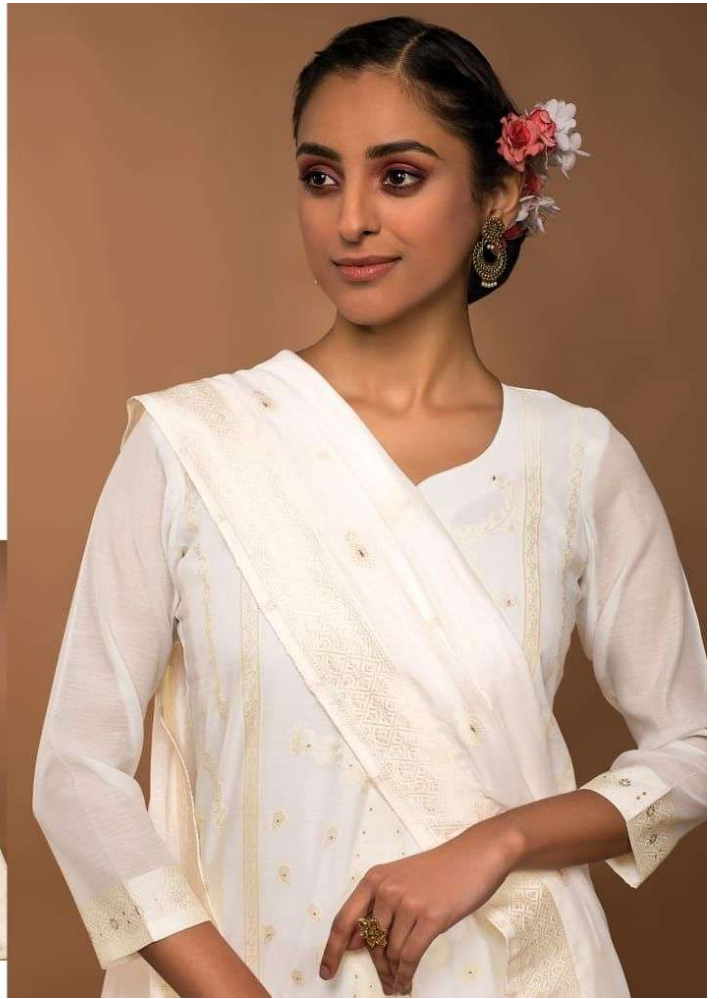
2641







2643



2644



2638

2639

2640

2641

2642

2643

2644