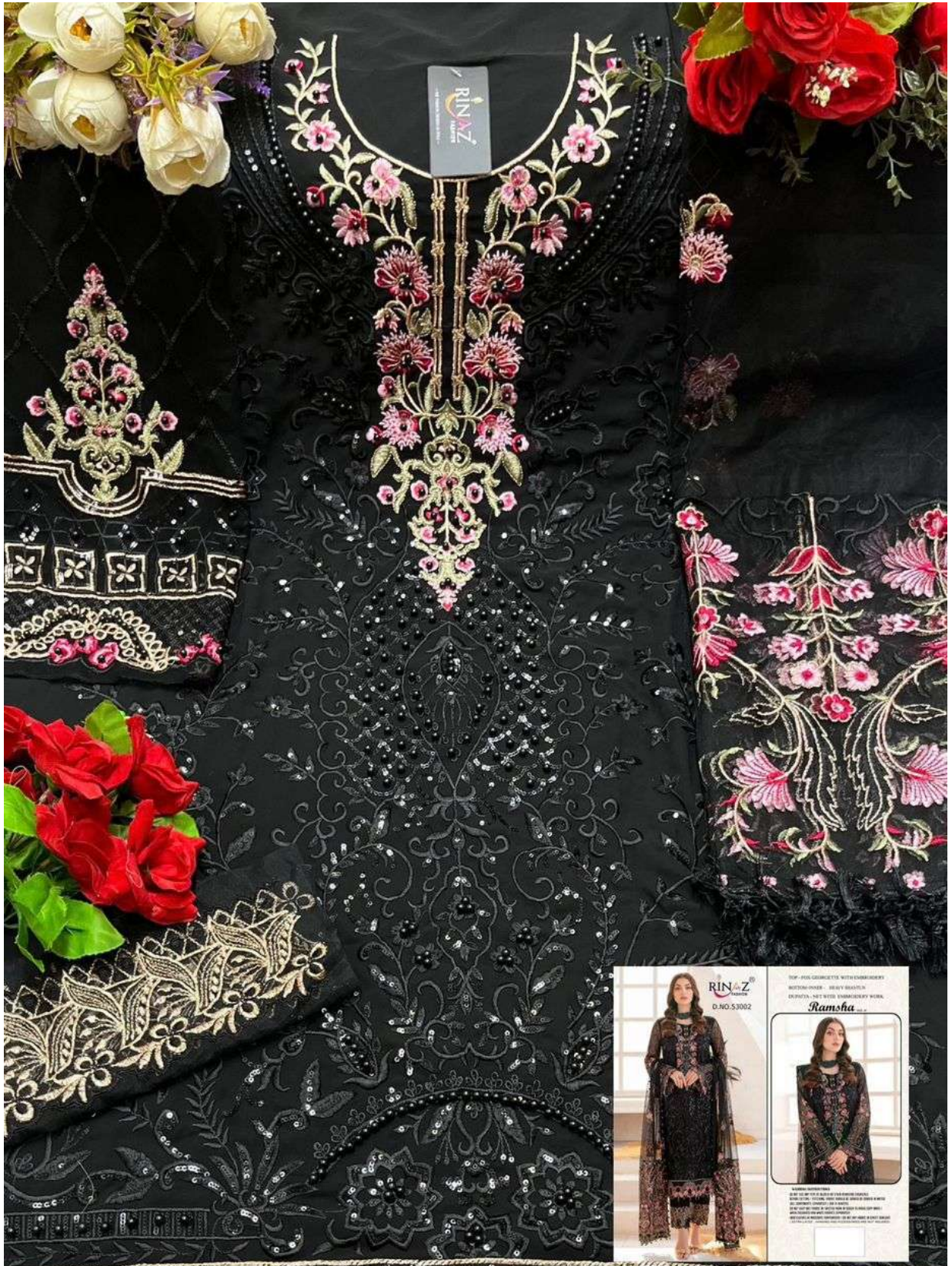






RINAZ[®]
FASHION
D.NO.53002





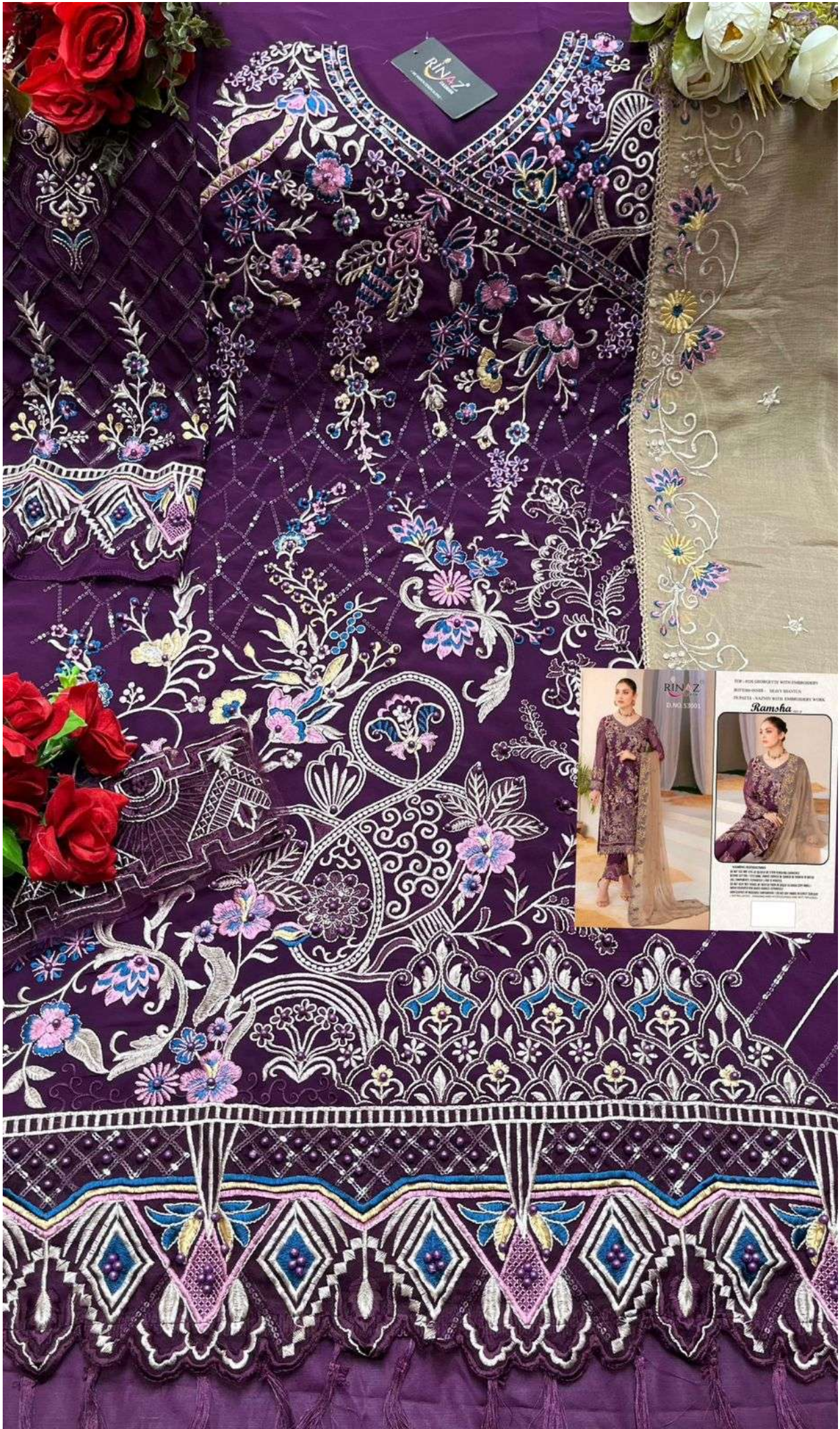
RINAZ
D.NO. S/3002

TOP - FULL GARMENTE WITH EMBROIDERY
MATERIALS - HEAVY QUALITY
DESIGNER - NET WITH EMBROIDERY WORK

Ramsha

© 2023 RINAZ. ALL RIGHTS RESERVED. THIS IS A TRADE MARK OF RINAZ. THE DESIGN IS THE PROPERTY OF RINAZ. THE PHOTOGRAPHY IS THE PROPERTY OF RINAZ. THE VIDEO IS THE PROPERTY OF RINAZ. THE MUSIC IS THE PROPERTY OF RINAZ. THE SOUND EFFECTS ARE THE PROPERTY OF RINAZ. THE FONT IS THE PROPERTY OF RINAZ. THE LOGO IS THE PROPERTY OF RINAZ. THE TRADE MARK IS THE PROPERTY OF RINAZ. THE SERVICE MARK IS THE PROPERTY OF RINAZ. THE PATENT IS THE PROPERTY OF RINAZ. THE COPYRIGHT IS THE PROPERTY OF RINAZ. THE TRADE SECRET IS THE PROPERTY OF RINAZ. THE TRADE MARK IS THE PROPERTY OF RINAZ. THE SERVICE MARK IS THE PROPERTY OF RINAZ. THE PATENT IS THE PROPERTY OF RINAZ. THE COPYRIGHT IS THE PROPERTY OF RINAZ. THE TRADE SECRET IS THE PROPERTY OF RINAZ.





RINAZ



RINAZ
TEL: 903 53901

NEW - 100% COTTON WITH EMBROIDERY
INTERFACING - READY MADE
PERFECT - LAYERS WITH EMBROIDERY WORK

Ramsha



100% COTTON WITH EMBROIDERY
INTERFACING - READY MADE
PERFECT - LAYERS WITH EMBROIDERY WORK

RINAZ[®]
FASHION

D.NO.53003

TOP - FOX GEORGETTE WITH EMBROIDERY

BOTTOM+INNER - HEAVY SHANTUN

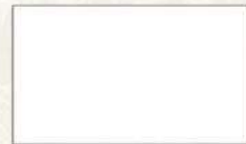
DUPATTA - NAZNIN WITH EMBROIDERY WORK

Ramsha VOL. 21



WASHING INSTRUCTIONS

DO NOT USE ANY TYPE OF BLEACH OR STAIN REMOVING CHEMICALS
BEFORE CUTTING / STITCHING. FABRIC SHOULD BE SOAKED IN WATER
(ALL COMPONENTS SEPARATELY) FOR 15 MINUTES
DO NOT KEEP WET FABRIC IN TWISTED FORM IN ORDER TO AVOID COPY MARKS !
WASH COLOURED AND WHITE FABRICS SEPARATELY
IRON CLOTHES AT MODERATE TEMPERATURE ! DO NOT DRY FABRIC IN DIRECT SUNLIGHT
(EXTRA LACES , HANGING AND ACCESSORIES ARE NOT INDUDED)





RINAZ[®]
FASHION

D.NO.53001

TOP - FOX GEORGETTE WITH EMBROIDERY

BOTTOM+INNER - HEAVY SHANTUN

DUPATTA - NAZNIN WITH EMBROIDERY WORK

Ramsha VOL. 21



WASHING INSTRUCTIONS

DO NOT USE ANY TYPE OF BLEACH OR STAIN REMOVING CHEMICALS
BEFORE CUTTING / STITCHING. FABRIC SHOULD BE SOAKED IN WATER
(ALL COMPONENTS SEPARATELY) FOR 15 MINUTES
DO NOT KEEP WET FABRIC IN TWISTED FORM IN ORDER TO AVOID COPY MARKS !
WASH COLOURED AND WHITE FABRICS SEPARATELY
IRON CLOTHES AT MODERATE TEMPERATURE ! DO NOT DRY FABRIC IN DIRECT SUNLIGHT
(EXTRA LACES , HANGING AND ACCESSORIES ARE NOT INDUDED)



RINAZ[®]
FASHION
D.NO.53002



RINAZ[®]
FASHION

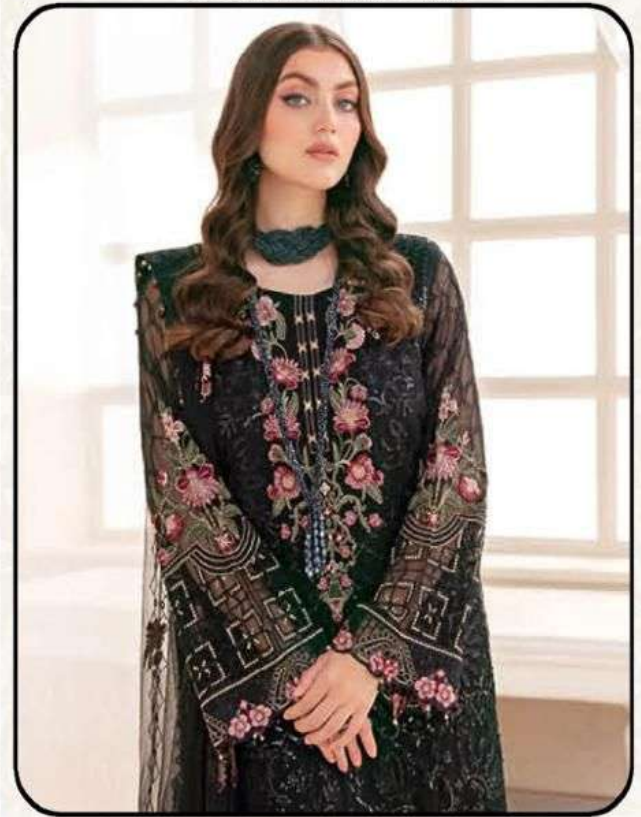
D.NO.53002

TOP - FOX GEORGETTE WITH EMBROIDERY

BOTTOM+INNER - HEAVY SHANTUN

DUPATTA - NET WITH EMBROIDERY WORK

Ramsha VOL. 21

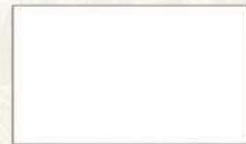


WASHING INSTRUCTIONS

DO NOT USE ANY TYPE OF BLEACH OR STAIN REMOVING CHEMICALS
BEFORE CUTTING / STITCHING. FABRIC SHOULD BE SOAKED IN WATER
(ALL COMPONENTS SEPARATELY) FOR 15 MINUTES

DO NOT KEEP WET FABRIC IN TWISTED FORM IN ORDER TO AVOID COPY MARKS !
WASH COLOURED AND WHITE FABRICS SEPARATELY

IRON CLOTHES AT MODERATE TEMPERATURE ! DO NOT DRY FABRIC IN DIRECT SUNLIGHT
(EXTRA LACES , HANGING AND ACCESSORIES ARE NOT INDUDED)





Ramsha

VOL- 21

D.No.	TOP	BOTTOM + INNER	DUPATTA
53001	FOX GEORGETTE WITH EMBROIDERY	HEAVY SHANTUN	NAZNIN WITH EMBROIDERY WORK
53002	FOX GEORGETTE WITH EMBROIDERY	HEAVY SHANTUN	NETT WITH EMBROIDERY WORK
53003	FOX GEORGETTE WITH EMBROIDERY	HEAVY SHANTUN	NAZNIN WITH EMBROIDERY WORK

***NOTE : Rate 1399/- + GST Extra.**