



MUZLIN 22-3



1921



1922



1925



1926



1923



1924



1927



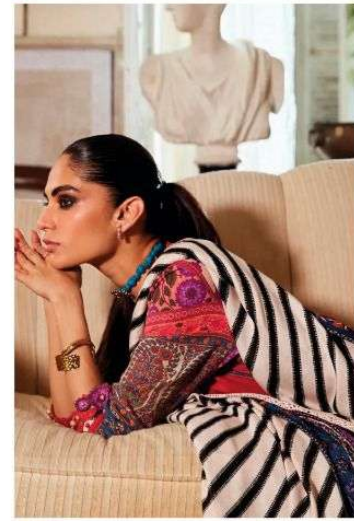
1928



MUZLIN 22 -3



DS



Universal Grace

Her gait knows no boundaries. Her elegance knows no limits. Her charm is a source of inspiration and wonderment across the world. Looking simply divine in her matchless attire, she rules the world with her smile. Her admirers follow, entranced.



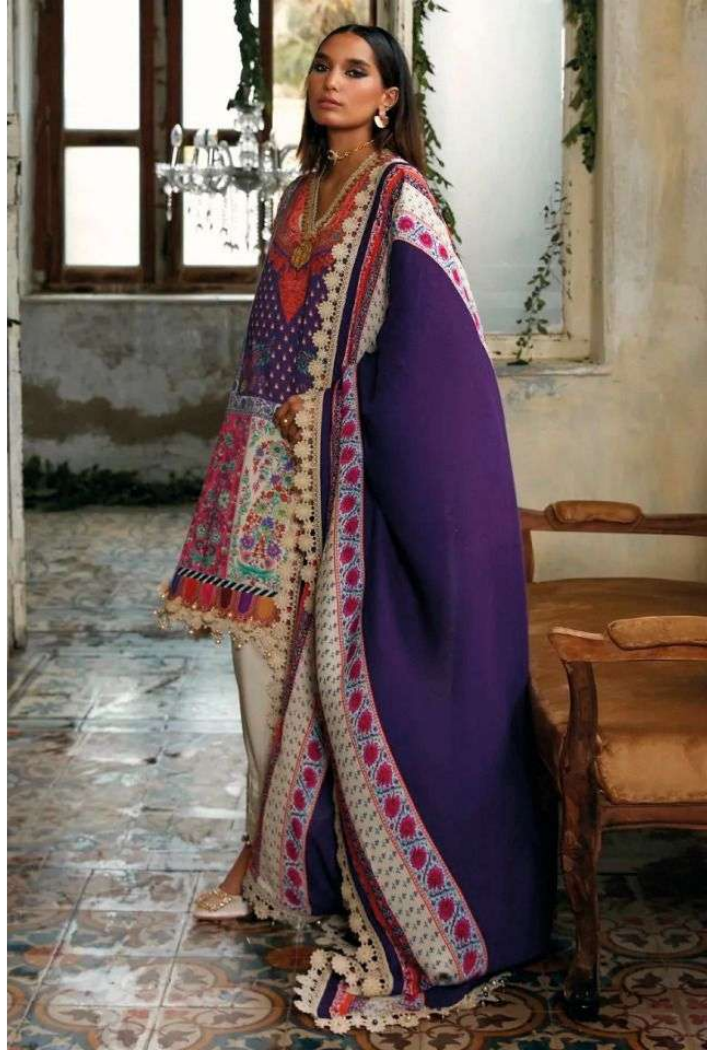
Lady of Light

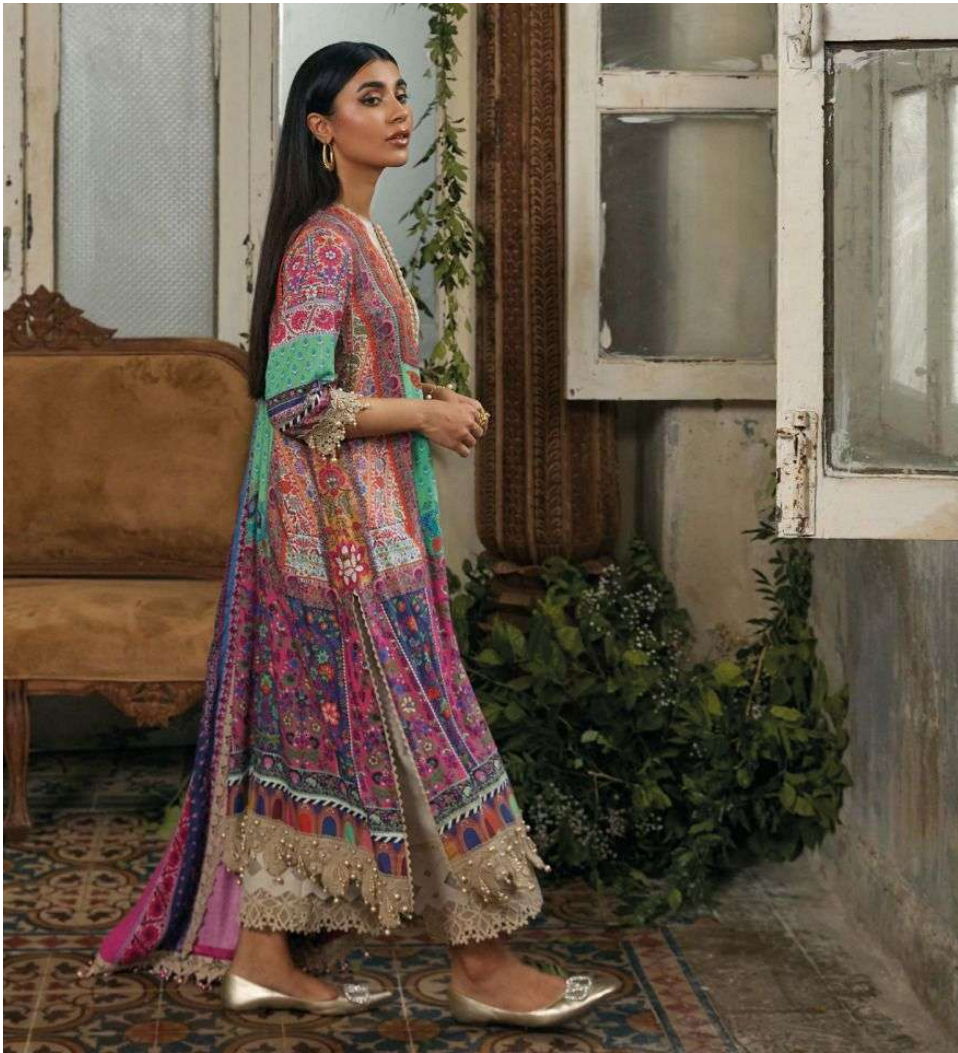
You shimmer. You glimmer. You sparkle. And in your special, you outshine. Next to you, the world is pale and lifeless. You are the moonlight...the stream of class which adds a sheen to every evening.

S



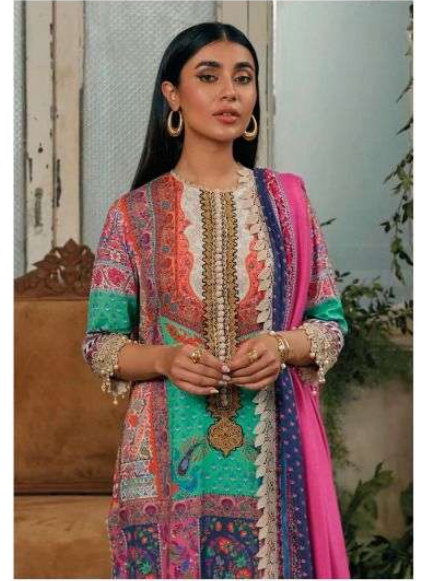
>> 1926 <<

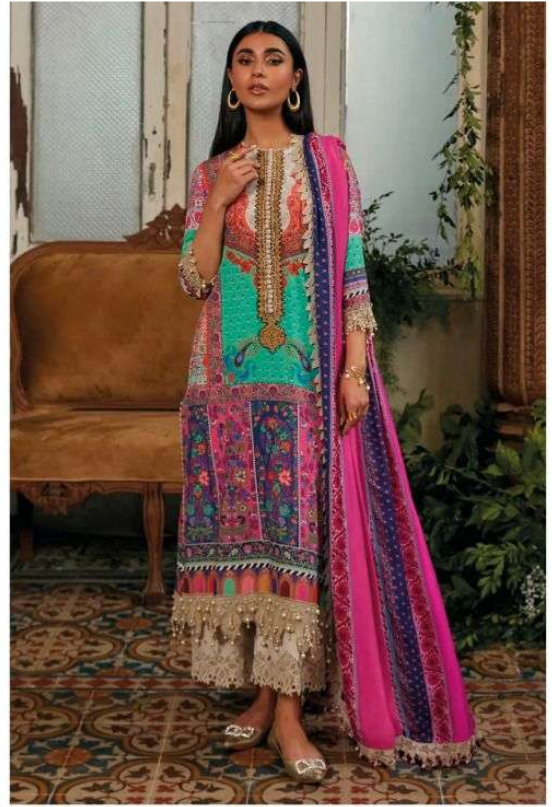
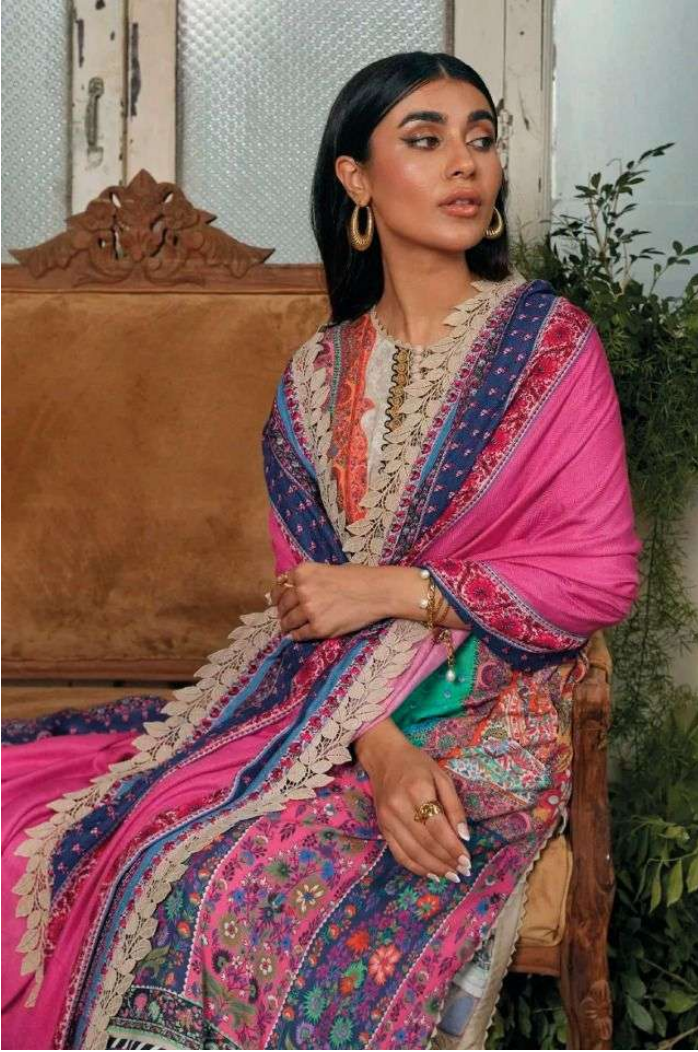




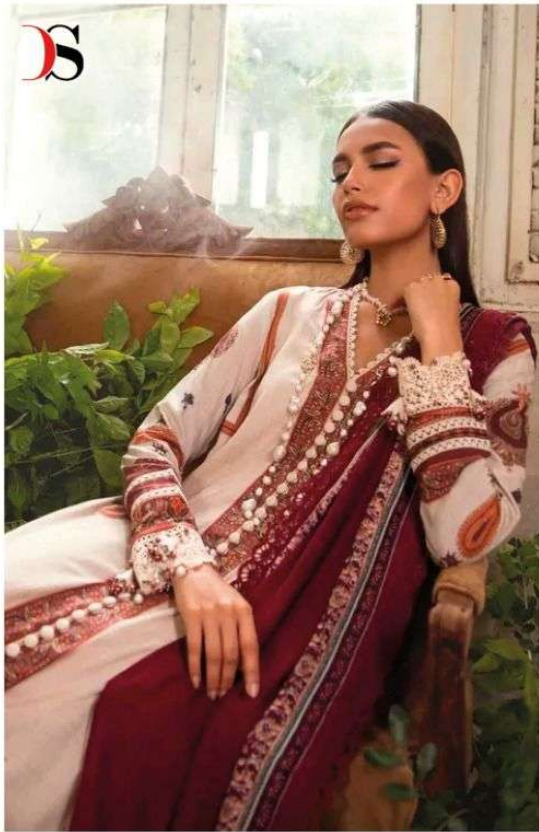
The Spring of Youth

Her threads enfold her in an eternal promise of youth.
Even with the passage of the years and the seasons, she
remains unmarked by time. She remains a flower- radiant,
in full bloom, perfect in every way. From her bearing.

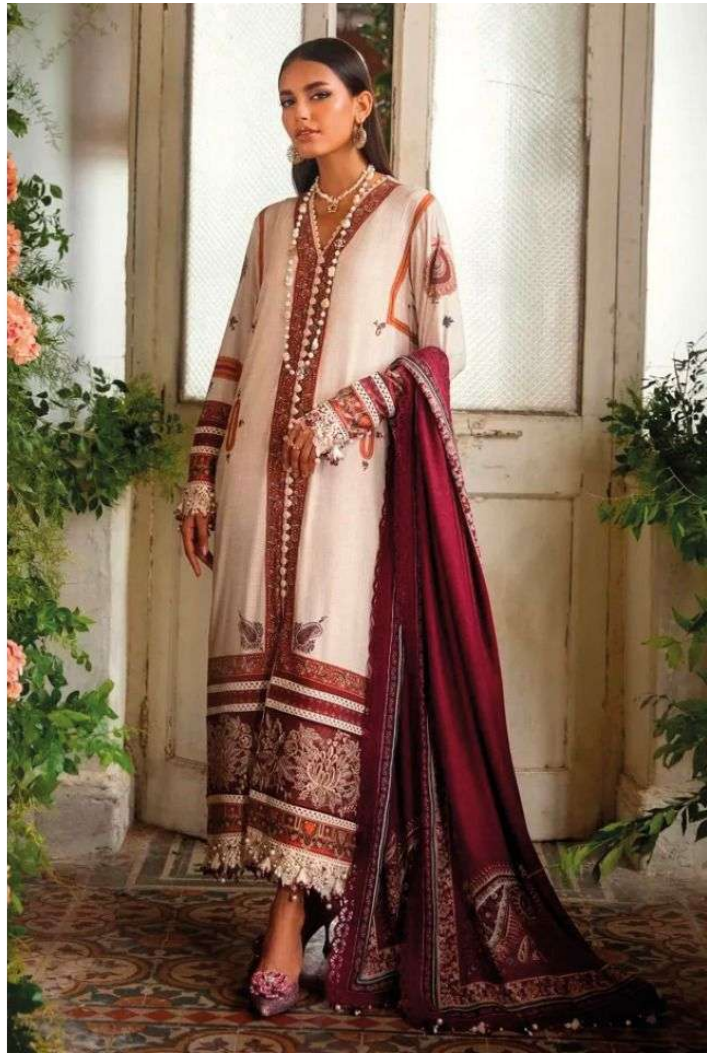




>>> 1925 <<<



»» 1924 ««

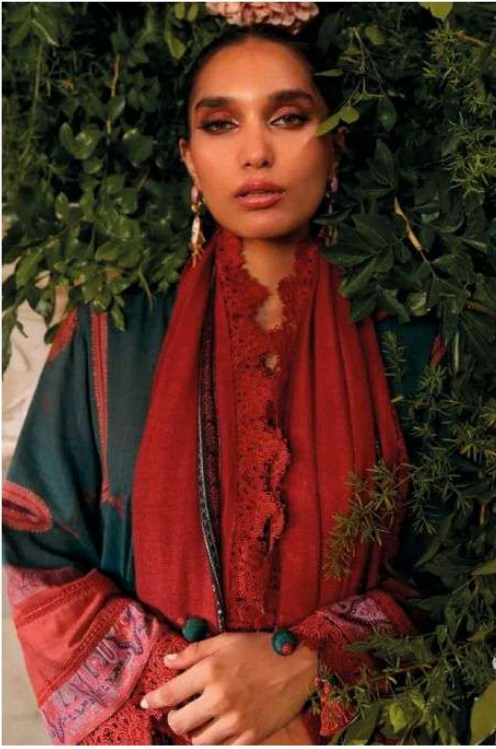




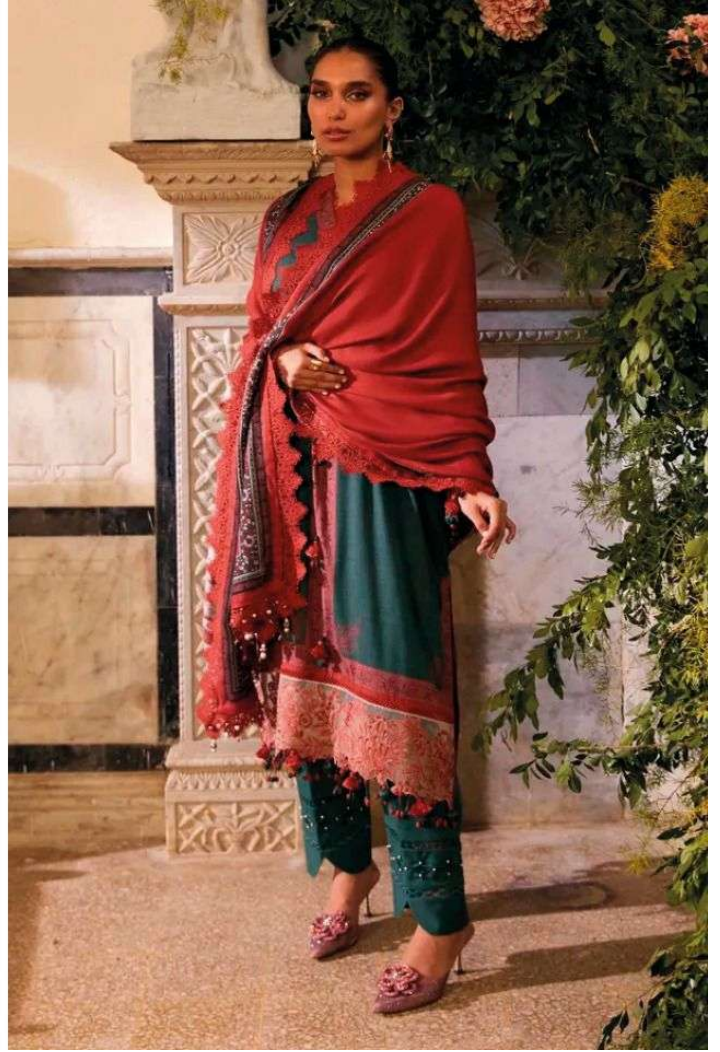
Eternal Magic

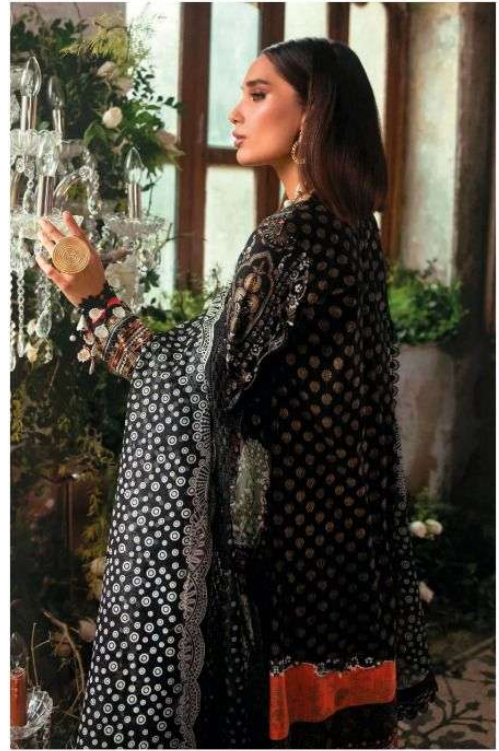
Fads fade. Styles wither. Tastes change. But she smiles, unshaken. She has mastered the art of eternal beauty. Her attire has been designed to outlive the vagaries of the fashion world, and remain sculpted forever in the hearts and minds of those who behold her.





>> 1923 <<





>>> 1922 <<<

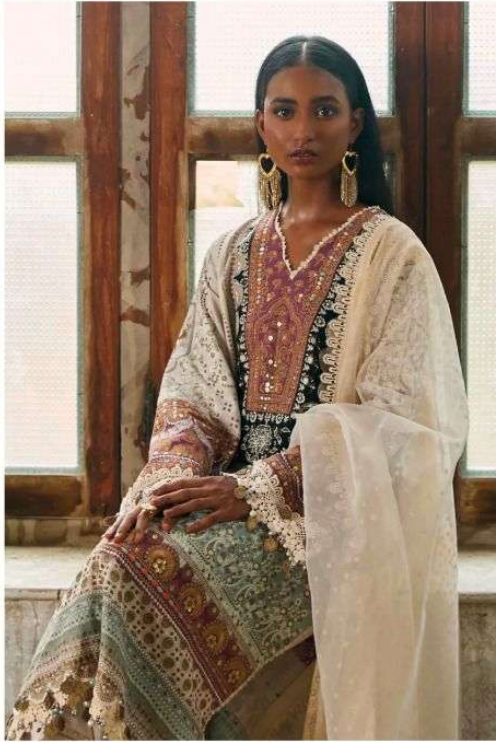


Universal Grace

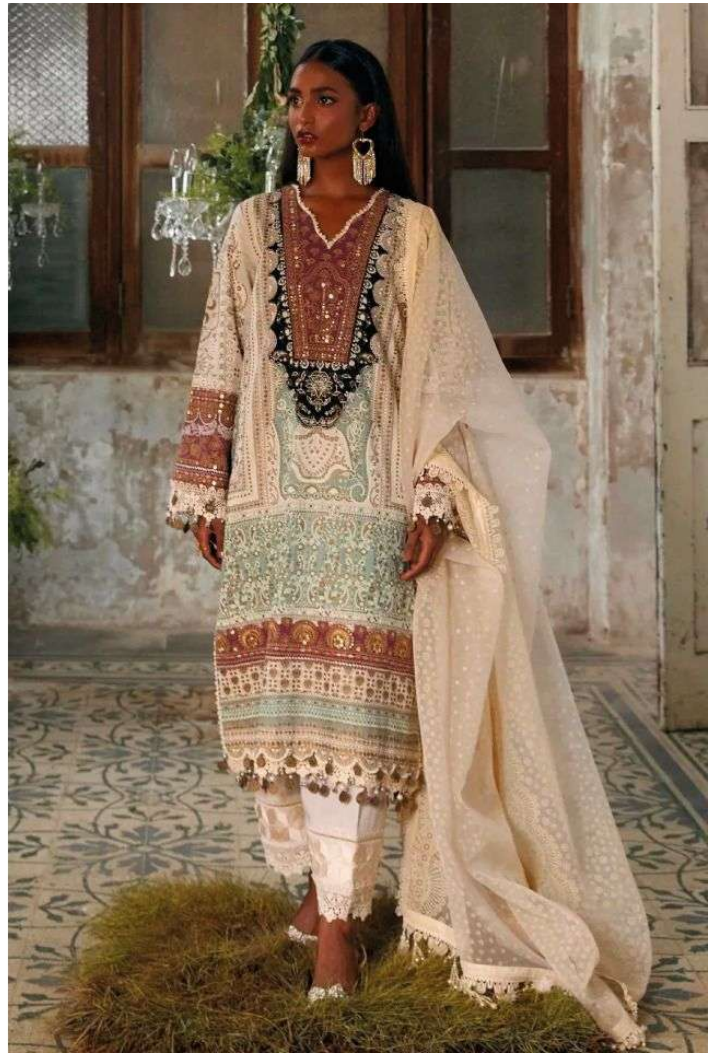
Her gait knows no boundaries. Her elegance knows no limits. Her charm is a source of inspiration and wonderment across the world. Looking simply divine in her matchless attire, she rules the world with her smile. Her admirers follow, entranced.



DS



>> 1921 <<



A woman with dark hair pulled back, wearing a vibrant red shawl with intricate lace detailing and a green dress, stands in front of a lush wall of greenery and pink flowers. The scene is set against a classical architectural background with stone carvings. The overall mood is elegant and artistic.

Mystical

Creations



MUZLIN 22-3



DEEPSY
SUITS

Email : deepysuits572@gmail.com

Complimentary copy-not for sale