 bhkala

Radiate significance with our exquisitely crafted outfit,
delicately detailed with threads making it a winning statement.



4803



 bhkala

Radiate significance with our exquisitely crafted outfit,
delicately detailed with threads making it a winning statement.



4803



 bhkala

The delicate beauty of a lot, the very subtle, ethereal, with all over mirror embellishments.
This stunning design features a contemporary design highlighted with traditional embroidery. Inspired by the beauty of a Tuscan Summer,
this ensemble is a celebration of joyous occasions.



4801





 bhkala



The delicate beauty of a hue like from looks truly glamorous with all over shimmer embellishment.
This stunning lehenga frames a contemporary design highlighted with traditional embroidery. Inspired by the beauty of a Tuscan Summer,
this ensemble is a celebration of joyous occasions.



4801







Abhkala

Creating memorable moments and unforgettable love stories with our all new collection, Tuscan Summer, a tribute to togetherness. Every ensemble is a testament of bespoke glamour inspired by the typical beauty of the Tuscan countryside.



4802





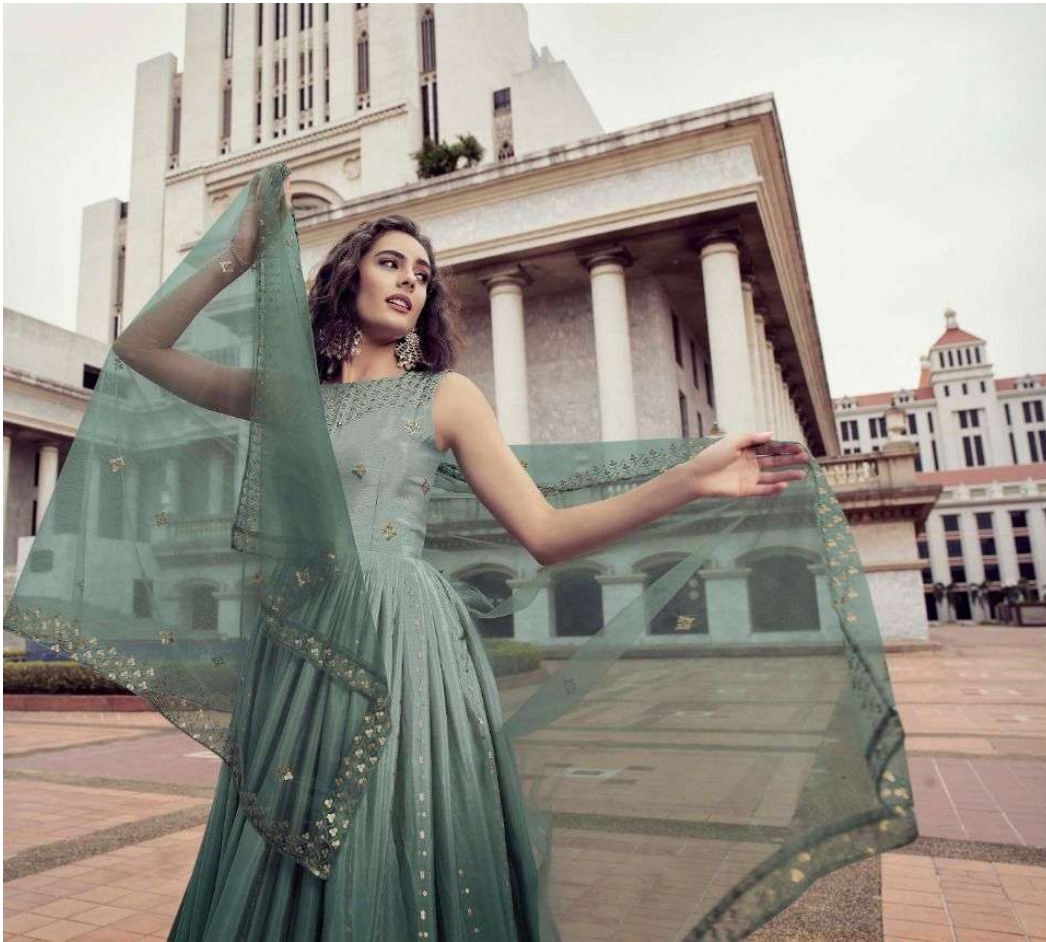
 **Sukhkala**

Creating memorable occasions and unforgettable love stories with our all-time collection, Tuscan Summer, a tribute to togetherness. Every ensemble is a statement of bespoke glamour inspired by the lyrical beauty of the Tuscan country side.



4802





 bhkala

Creating memorable moments and unforgettable
love stories with our all new collections.
Tissue Sarees, a tribute to heritage.
Every saree is a masterpiece of exquisite
glamour inspired by the lyrical beauty of the
Tissot's masterpiece.



4802





 bhkala

Bulkier experience with our exquisitely crafted suits,
delicately detailed with threads making it a shimmering masterpiece.



4803



bhkala

This season's amazing new collection, *Tiram Summer* showcases intricate embroidery designs inspired by exquisite Tiram work in light shades and bright hues of pastel tones. We bring you a collection that is the epitome of modern craftsmanship and the infinite beauty of Indian couture.



4803





 bhkala

Radiant elegance with our exquisitely crafted outfits,
delicately detailed with threads making it a stunning statement.



4803





The structured silhouettes are an extension of what we suggest each season, simple and wearable clothing for women that consistently pick effortless personal style over fashion, even when they decide to play dress up.



4804





Swastika bhkala

The structured silhouettes are an extension of what we suggest each season, simple and wearable clothing for women, that consistently pick effortless personal style over fashion, even when they decide to play dress-up.



4804











Design NO. (SKU)	Gown & Inner Color	Dupatta Color	Gown Fabric	Dupatta Fabric	Inner Color	Inner Fabric	Gown & Dupatta Work	SIZE (SEMI - STITCHED)	Top Length INCH	Inner Length MTR	Dupatta Length
4801	Grey To Blue Multi Color	Blue	Chinon	NET	Grey	Silk Crepe	Thread And Sequince Embroidered Work	Semi Stitched (Customized from 34 to 46)	58	3	2.30 MTR
4802	Pista To Green Multi Color	Pista	Chinon	NET	Pista	Silk Crepe	Thread And Sequince Embroidered Work	Semi Stitched (Customized from 34 to 46)	58	3	2.30 MTR
4803	Pink To Dusty Multi Color	Pink	Chinon	NET	Pink	Silk Crepe	Thread And Sequince Embroidered Work	Semi Stitched (Customized from 34 to 46)	58	3	2.30 MTR
4804	Dusty To Purple Multi Color	Dusty	Chinon	NET	Dusty	Silk Crepe	Thread And Sequince Embroidered Work	Semi Stitched (Customized from 34 to 46)	58	3	2.30 MTR

CAN-CAN NOT AVAILABLE. • FULL STITCHING AVAILABLE.

GOWN WEIGHT: 1 KG

THIS BOOK / CATALOGUE / LOGO / ARE PROTECTED UNDER COPYRIGHT ACT.

AN ILLEGAL/UNAUTHORIZED REPRINT, PUBLISHING, REPRODUCTION, DISTRIBUTION AND MODIFICATION OF ANY IMAGES, PHOTOGRAPHS AND PRODUCTCS, TOTALLY OR IN PART, FOR ANY PURPOSE, REASON OR CAUSE IS STRICTLY PROHIBITED AND PUNISHABLE UNDER LAW.

Abhikala
fLORY
VOL-25



4801



4802



4803



4804

