





#R-346



TOP- FOX GEORGET WITH HEAVY EMBROIDERY
BOTTOM- DULL SANTOON
DUPATTA - NAZMEEN WITH EMBROIDERY LESS

- Ⓟ DRY CLEAN ONLY.
- ✘ DO NOT USE ANY BLEACH OR STAIN REMOVING CHEMICAL.
- ☎ IRON THE FABRIC AT MODERATE TEMPERATURE.





BACK WORK

#QUEEN-E

- TOP**- GEORGET WITH FRUNT & BACK EMBROIDERY WORK
- BOTTOM**- DULL SANTOON
- DUPATTA** - NAZMEEN WITH LESS



#CHIKANKARI-08



TOP- FOX GEORGETTE WITH HEAVY EMBROIDERY
BOTTOM- DULL SANTOON
DUPATTA - CHINON EMBROIDERY LACE

- Ⓟ DRY CLEAN ONLY.
- ✘ DO NOT USE ANY BLEACH OR STAIN REMOVING CHEMICAL.
- ☎ IRON THE FABRIC AT MODERATE TEMPERATURE.





#R-1002
READYMAD
SIZE - XL

TOP- GEORGET WITH EMBROIDERY
BOTTOM- PURE RAYON LYCRA WITH
EMBROIDERY
DUPATTA - CHINNON EMBROIDERY



#LAKHNAVI-2-A



TOP- FOX GEORGETTE WITH HEAVY EMBROIDERY
BOTTOM- DULL SANTOON
DUPATTA - NAZMEEN WITH EMBROIDERY

- Ⓟ DRY CLEAN ONLY.
- ✘ DO NOT USE ANY BLEACH OR STAIN REMOVING CHEMICAL.
- ☎ IRON THE FABRIC AT MODERATE TEMPERATURE.

Ramsha®



#QUEEN-A

TOP- GEORGET WITH FRUNT & BACK EMBROIDERY WORK

BOTTOM- DULL SANTOON

DUPATTA - NAZMEEN WITH LESS



#R-QALAMKAR-D



TOP- FOX GEORGETL WITH EMBROIDERY

BOTTOM- DULL SANTOON





#RAJWADI-03



TOP- FOX GEORGETTE WITH HEAVY EMBROIDERY
BOTTOM- DULL SANTOON
DUPATTA - NAZMEEN WITH EMBROIDERY

- Ⓟ DRY CLEAN ONLY.
- ✂ DO NOT USE ANY BLEACH OR STAIN REMOVING CHEMICAL.
- ☎ IRON THE FABRIC AT MODERATE TEMPERATURE.





Ramsha®



MARIYA.B-D

TOP- HEAVY EMBRODERD ORGANJA & NET
BOTTOM- SANTOON
DUPATTA - EMBRODERD NET





#CHIKANKARI-07



TOP- FOX GEORGETTE WITH HEAVY EMBROIDERY
BOTTOM- DULL SANTOON
DUPATTA - CHINON EMBROIDERY LACE



Ⓟ DRY CLEAN ONLY.
⊗ DO NOT USE ANY BLEACH OR STAIN REMOVING CHEMICAL.
☎ IRON THE FABRIC AT MODERATE TEMPERATURE.



#R-346-WHITE



TOP- FOX GEORGET WITH HEAVY EMBROIDERY
BOTTOM- DULL SANTOON
DUPATTA - NAZMEEN WITH EMBROIDERY LESS

- Ⓟ DRY CLEAN ONLY.
- ✂ DO NOT USE ANY BLEACH OR STAIN REMOVING CHEMICAL.
- 🧊 IRON THE FABRIC AT MODERATE TEMPERATURE.





#R-1001
READYMAD
SIZE - XL

TOP- GEORGET WITH EMBROIDERY
BOTTOM- PURE RAYON LYCRA WITH
EMBROIDERY
DUPATTA - CHINNON EMBROIDERY



#RAJWADI-01



TOP- FOX GEORGETTE WITH HEAVY EMBROIDERY
BOTTOM- DULL SANTOON
DUPATTA - NAZMEEN WITH EMBROIDERY

- Ⓟ DRY CLEAN ONLY.
- ✂ DO NOT USE ANY BLEACH OR STAIN REMOVING CHEMICAL.
- ☎ IRON THE FABRIC AT MODERATE TEMPERATURE.





#R-QALAMKAR-A



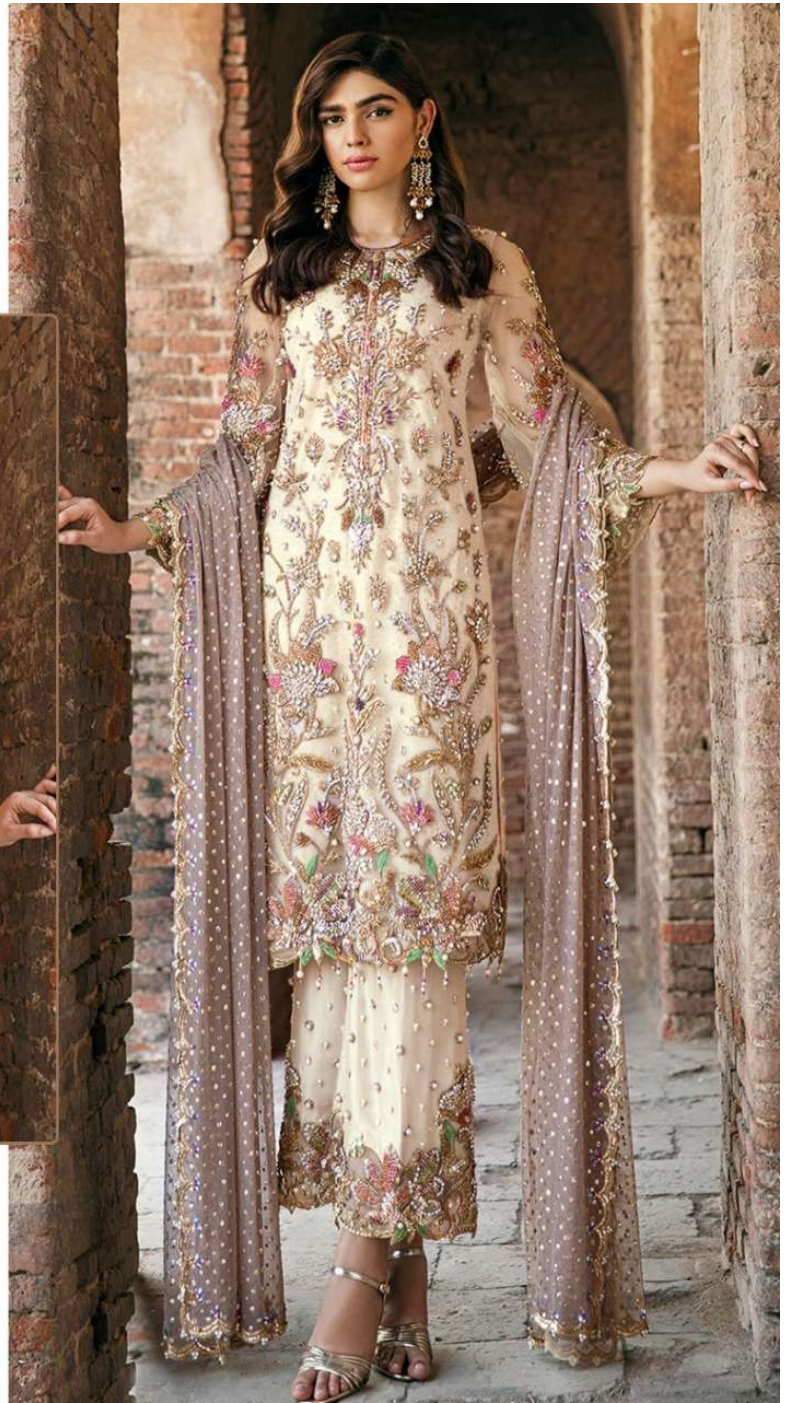
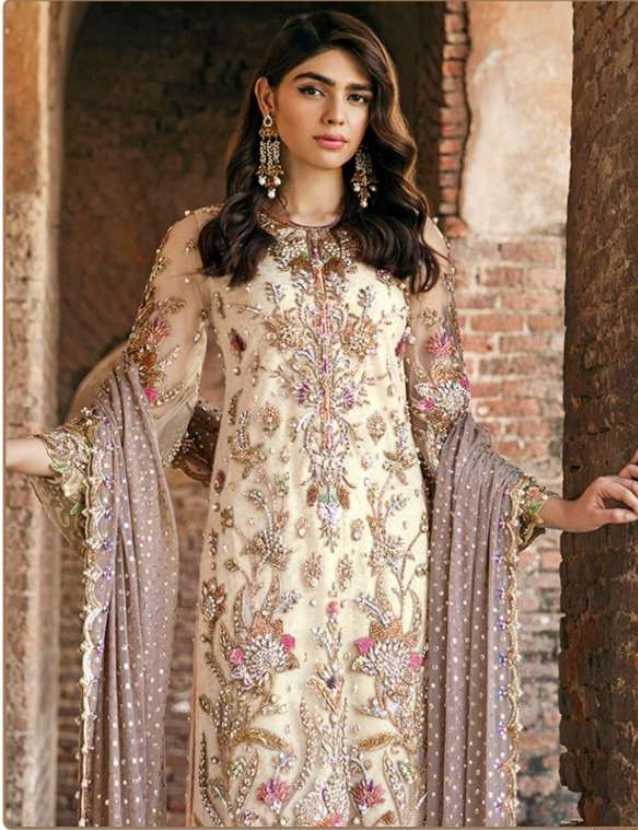
TOP- FOX GEORGETL WITH EMBROIDERY
BOTTOM- DULL SANTOON
DUPATTA - NET EMBROIDERY WITH FREEL

- Ⓟ DRY CLEAN ONLY.
- ✘ DO NOT USE ANY BLEACH OR STAIN REMOVING CHEMICAL.
- ☎ IRON THE FABRIC AT MODERATE TEMPERATURE.





#R-406-E



TOP- FOX GEORGETTE WITH HEAVY EMBROIDERY
BOTTOM- SANTOON
DUPATTA - NAMEEN WITH EMBROIDERY

- Ⓟ DRY CLEAN ONLY.
- ✂ DO NOT USE ANY BLEACH OR STAIN REMOVING CHEMICAL.
- ☎ IRON THE FABRIC AT MODERATE TEMPERATURE.



#R-381-A



TOP- FOX GEORGET WITH HEAVY EMBROIDERY
BOTTOM- SANTOON
DUPATTA - BUTTERFLY NET HEAVY EMBROIDERY

Ⓟ DRY CLEAN ONLY.
ⓧ DO NOT USE ANY BLEACH OR STAIN REMOVING CHEMICAL.
🧊 IRON THE FABRIC AT MODERATE TEMPERATURE.



#R-381-B



TOP- FOX GEORGET WITH HEAVY EMBROIDERY
BOTTOM- SANTOON
DUPATTA - BUTTERFLY NET HEAVY EMBROIDERY

Ⓟ DRY CLEAN ONLY.
ⓧ DO NOT USE ANY BLEACH OR STAIN REMOVING CHEMICAL.
☎ IRON THE FABRIC AT MODERATE TEMPERATURE.



#R-530



TOP- FOX GEORGETTE WITH HEAVY EMBROIDERY
BOTTOM- DULL SANTOON
DUPATTA - NAZMEEN WITH EMBROIDERY

- Ⓟ DRY CLEAN ONLY.
- ✗ DO NOT USE ANY BLEACH OR STAIN REMOVING CHEMICAL.
- ☎ IRON THE FABRIC AT MODERATE TEMPERATURE.



#R-QALAMKAR-C



TOP- FOX GEORGETL WITH EMBROIDERY
BOTTOM- DULL SANTOON
DUPATTA - NET EMBROIDERY WITH FREEL

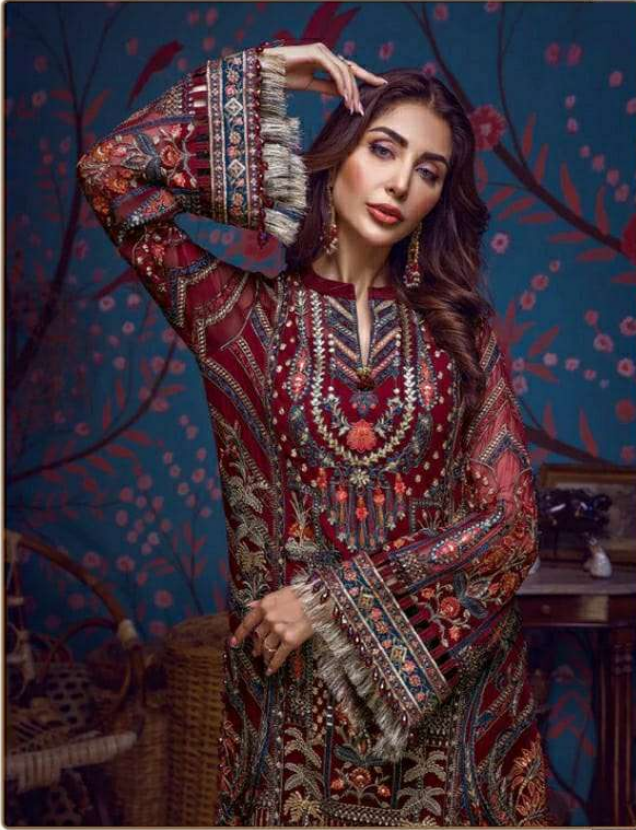


Ⓟ DRY CLEAN ONLY.
ⓧ DO NOT USE ANY BLEACH OR STAIN REMOVING CHEMICAL.
☐ IRON THE FABRIC AT MODERATE TEMPERATURE





#R-539



TOP- GEORGET WITH HEAVY EMBROIDERY

BOTTOM- DULL SANTOON

DUPATTA - JACQUARD

- Ⓟ DRY CLEAN ONLY.
- ⓧ DO NOT USE ANY BLEACH OR STAIN REMOVING CHEMICAL.
- ☎ IRON THE FABRIC AT MODERATE TEMPERATURE.



AFREEN - D



TOP- FOX GEORGET WITH HEAVY EMBROIDERY
BOTTOM- DULL SANTOON
DUPATTA - GEORGET WITH HEAVY EMBROIDERY

Ⓟ DRY CLEAN ONLY.
ⓧ DO NOT USE ANY BLEACH OR STAIN REMOVING CHEMICAL.
🧊 IRON THE FABRIC AT MODERATE TEMPERATURE.



#R-346-E



TOP- FOX GEORGET WITH HEAVY EMBROIDERY
BOTTOM- DULL SANTOON
DUPATTA - NAZMEEN WITH EMBROIDERY LESS

- Ⓟ DRY CLEAN ONLY.
- ✘ DO NOT USE ANY BLEACH OR STAIN REMOVING CHEMICAL.
- ☎ IRON THE FABRIC AT MODERATE TEMPERATURE.





#R-522



TOP- FOX GEORGETTE WITH HEAVY EMBROIDERY
BOTTOM- DULL SANTOON
DUPATTA - NAZMEEN WITH EMBROIDERY

Ⓟ DRY CLEAN ONLY.
ⓧ DO NOT USE ANY BLEACH OR STAIN REMOVING CHEMICAL.
Ⓡ IRON THE FABRIC AT MODERATE TEMPERATURE.



#R-QALAMKAR-B



TOP- FOX GEORGETL WITH EMBROIDERY
BOTTOM- DULL SANTOON
DUPATTA - NET EMBROIDERY WITH FREEL

Ⓟ DRY CLEAN ONLY.
ⓧ DO NOT USE ANY BLEACH OR STAIN REMOVING CHEMICAL.
🧊 IRON THE FABRIC AT MODERATE TEMPERATURE.

