







Emb Front

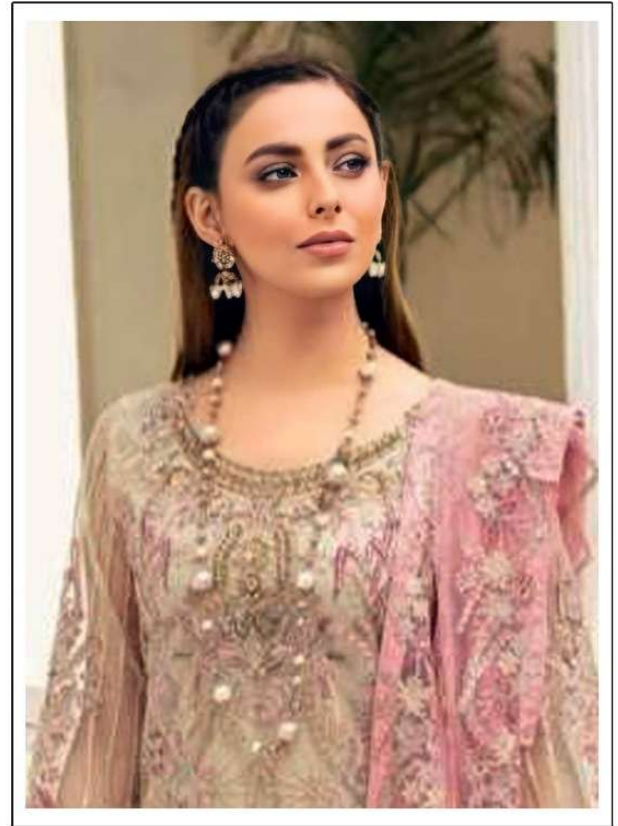
Emb Sleeves

Emb Chiffon Dupatta

Patch







M-130



- Ⓢ DRY CLEAN ONLY.
- ⓧ DO NOT USE ANY BLEACH OR STAIN REMOVING CHEMICAL.
- Ⓜ IRON THE FABRIC AT MODERATE TEMPERATURE.