





**Top- ORGANZA EMBROIDERY WITH  
APLIQUE & PEARL WORK**

**Bottom/Iner- SANTOON**

**Dupatta- ORGANZA EMBROIDERY**



**DS-178-A**



**DS-178-B**



**DS-178-C**



**DS-178-D**





DS-178-D

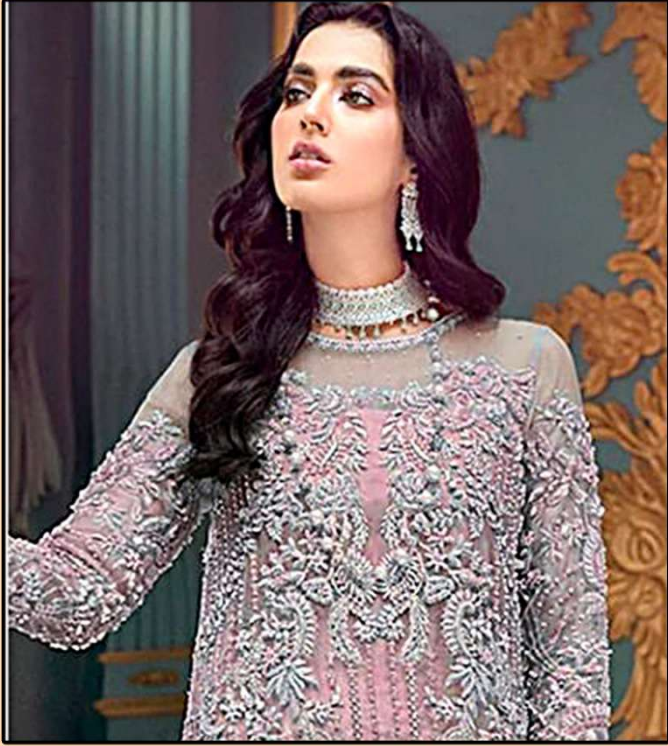
**Top- ORGANZA EMBROIDERY WITH  
APLIQUE & PEARL WORK**

**Bottom/Iner- SANTOON**

**Dupatta- ORGANZA EMBROIDERY**

**WASHING INSTRUCTIONS**  
DO NOT USE ANY TYPE OF BLEACH OR SOAKING CHEMICALS  
BEFORE CUTTING FABRIC SHOULD BE SOAKED IN WATER  
ALL COMPONENTS FOR 15 MINUTES  
DO NOT USE HOT IRON OR TUMBLE DRYER TO AVOID OF MARKS  
WASH COLOURED AND WHITE FABRICS SEPARATELY  
IRON COLOURED FABRICS AT LOW TEMPERATURES  
IRON COLOURED FABRICS AT LOW TEMPERATURES  
IRON COLOURED FABRICS AT LOW TEMPERATURES





DS-178-C

**Top- ORGANZA EMBROIDERY WITH  
APLIQUE & PEARL WORK**

**Bottom/Iner- SANTOON**

**Dupatta- ORGANZA EMBROIDERY**

**WASHING INSTRUCTIONS**  
DO NOT USE ANY TYPE OF BLEACH OR FORMALDEHYDE CHEMICALS  
BEFORE DYEING OR STAINING. SHOULD BE WASHED IN COLD WATER  
ALL COMPONENTS WASHED SEPARATELY FOR 15 MINUTES  
DO NOT USE HOT IRON OR PRESSURE TO REMOVE WRINKLES  
WASH COLOURED AND WHITE FABRICS SEPARATELY  
IRON COLOURED FABRICS AT LOW TEMPERATURE FROM THE REVERSE SIDE  
IRON WHITE FABRICS AT HIGH TEMPERATURE FROM THE REVERSE SIDE  
IRON ACCESSORIES AND TRIMMINGS AS NOT TO BE WASHED



**Dinsaa  
Suit**



DS-178-B

**Top- ORGANZA EMBROIDERY WITH  
APLIQUE & PEARL WORK**

**Bottom/Iner- SANTOON**

**Dupatta- ORGANZA EMBROIDERY**

**WASHING INSTRUCTIONS**  
DO NOT USE ANY TYPE OF BLEACH OR FORMALDEHYDE CHEMICALS  
BEFORE DYEING OR STAINING. SHOULD BE WASHED IN COLD WATER  
ALL COMPONENTS WASHED FOR 15 MINUTES  
DO NOT USE HOT IRON OR TUMBLE DRYER. PRESS TO AVOID OF MARKS  
WASH COLOURED AND WHITE FABRICS SEPARATELY  
IRON COLOURED AT MEDIUM TEMPERATURE. DO NOT USE STARCH  
DURING WASHING AND DRESSING. ARE NOT ALLOWED.





DS-178-A

**Top- ORGANZA EMBROIDERY WITH  
APLIQUE & PEARL WORK**

**Bottom/Iner- SANTOON**

**Dupatta- ORGANZA EMBROIDERY**

**WASHING INSTRUCTIONS**  
DO NOT USE ANY TYPE OF BLEACH OR FORM-BUILDING CHEMICALS  
BEFORE COTTON/STAINING FABRIC SHOULD BE SOAKED IN WATER  
ALL COMPONENTS WASHED FOR 15 MINUTES  
DO NOT USE HOT IRON OR TUMBLE DRYER IN ORDER TO AVOID DAMAGE  
WASH COLOURED AND WHITE FABRICS SEPARATELY  
IRON CLOTHES AT MODERATE TEMPERATURE TO AVOID DAMAGE TO FABRIC  
DRESSING ROOMS AND ACCESSORIES ARE NOT ALLOWED



**Dinsaa  
Suit**