

A woman with long dark hair is the central figure, wearing a dark dress with a colorful geometric and floral pattern. She is also wearing a black shawl draped over her shoulders. Her right arm is raised, holding a piece of maroon fabric. She is looking down and to the left. The background is a blurred outdoor setting with greenery and a building with a red awning.

  
POONAM  
DESIGNER

Riwaz

A woman with long dark hair is the central figure, wearing a dark dress with a colorful geometric and floral pattern. She is also wearing a black shawl draped over her shoulders. Her right arm is raised, holding a piece of maroon fabric. She is looking down and to the left. The background is a blurred outdoor setting with greenery and a building with a red awning.

  
POONAM  
DESIGNER

Riwaz



UPDATE PASTE STYLE



POONAM  
DESIGNER

10004



10003

  
POONAM  
DESIGNER



  
POONAM  
DESIGNER



  
THE TREND SETTER



10002



BRIDE & BEAUTIFUL



POONAM  
DESIGN

10001



BRIDE & BEAUTIFUL

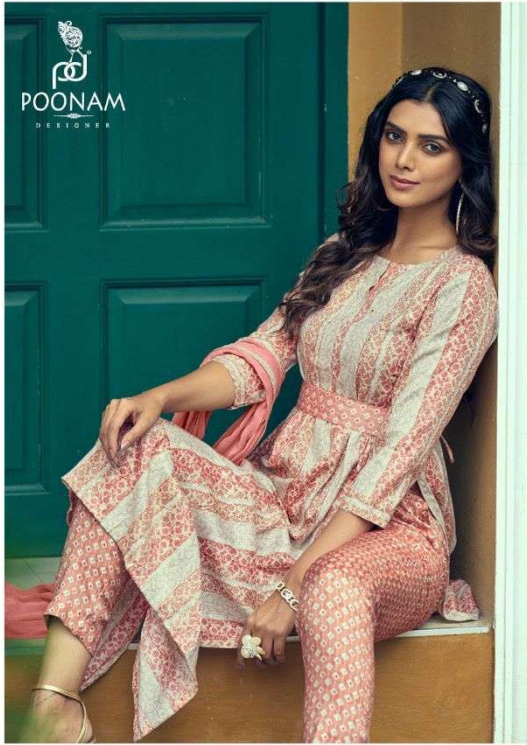




THE TREND SETTER



UPDATE PASTE STYLE



10008





RISE AND SHINE

POONAM  
DESIGNER

10005



10001



10002



10003



10007



10004



10005



10006



10008

M, L, XL, XXL