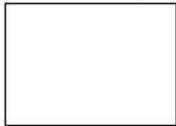




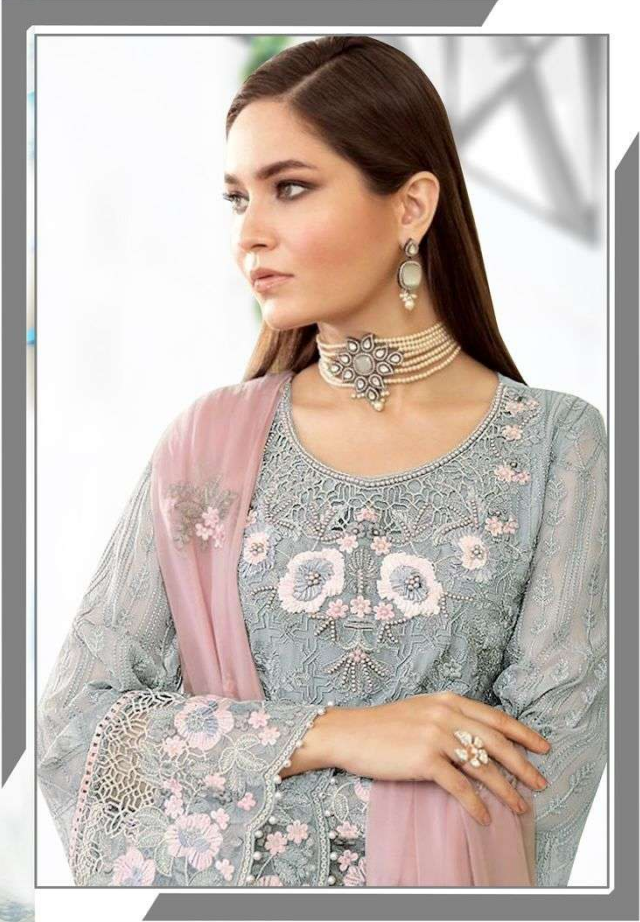
ROSE
SAFEERA



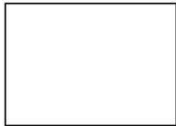
15003

WASHING INSTRUCTIONS

DO NOT USE TYPE OF BLEACH OR STAIN REMOVING CHEMICALS
BEFORE CUTTING / STITCHING, FABRIC SHOULD BE SOAKED IN WATER
(ALL COMPONENTS SEPARATELY) FOR 15 MINUTES
DO NOT KEEP WET FABRIC IN TWISTED FORM IN ORDER TO AVOID COPY MARKS |
IRON CLOTHES AT MODERATE TEMPERATURE | DO NOT DRY FABRIC IN DIRECT SUNLIGHT
(EXTRA LACES, HANGINGS AND ACCESSORIES ARE NOT INCLUDED)



ROSE
SAFEERA



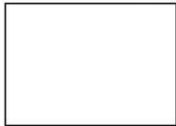
15002

WASHING INSTRUCTIONS

DO NOT USE TYPE OF BLEACH OR STAIN REMOVING CHEMICALS
BEFORE CUTTING / STITCHING, FABRIC SHOULD BE SOAKED IN WATER
(ALL COMPONENTS SEPARATELY) FOR 15 MINUTES
DO NOT KEEP WET FABRIC IN TWISTED FORM IN ORDER TO AVOID COPY MARKS |
IRON CLOTHES AT MODERATE TEMPERATURE | DO NOT DRY FABRIC IN DIRECT SUNLIGHT
(EXTRA LACES, HANGINGS AND ACCESSORIES ARE NOT INCLUDED)



ROSE
SAFEERA



15003

WASHING INSTRUCTIONS

DO NOT USE TYPE OF BLEACH OR STAIN REMOVING CHEMICALS
BEFORE CUTTING / STITCHING, FABRIC SHOULD BE SOAKED IN WATER
(ALL COMPONENTS SEPARATELY) FOR 15 MINUTES
DO NOT KEEP WET FABRIC IN TWISTED FORM IN ORDER TO AVOID COPY MARKS |
IRON CLOTHES AT MODERATE TEMPERATURE | DO NOT DRY FABRIC IN DIRECT SUNLIGHT
(EXTRA LACES, HANGINGS AND ACCESSORIES ARE NOT INCLUDED)




SHANAYA[®]

ROSE

SAFEERA



15004

WASHING INSTRUCTIONS

DO NOT USE TYPE OF BLEACH OR STAIN REMOVING CHEMICALS
BEFORE CUTTING / STITCHING, FABRIC SHOULD BE SOAKED IN WATER
(ALL COMPONENTS SEPARATELY) FOR 15 MINUTES
DO NOT KEEP WET FABRIC IN TWISTED FORM IN ORDER TO AVOID COPY MARKS |
IRON CLOTHES AT MODERATE TEMPERATURE | DO NOT DRY FABRIC IN DIRECT SUNLIGHT
(EXTRA LACES, HANGINGS AND ACCESSORIES ARE NOT INCLUDED)

SHANAYA[®]



15002



15003



15004

ROSE
SAFEERA
NX

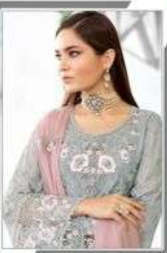




ROSE
SAFEERA
15000

IRON CARE
Wash in cold water
Do not use bleach
Do not use iron
Do not use dry clean
Do not use steam
Do not use tumble dry

SHANAYA
Exclusive Pattern, Design & Material
© Shanaya Fashion
#ShanayaFashion



ROSE
SAFEERA
150022

WEAVING INSTRUCTIONS

1. WASH IN COLD WATER

2. DO NOT BLEACH

3. DO NOT IRON

4. DO NOT DRY IN SUN

5. DO NOT WASH WITH OTHER FABRICS

6. DO NOT USE DETERGENT

7. DO NOT USE SOAP

8. DO NOT USE STARCH

9. DO NOT USE GLEAMING

10. DO NOT USE TUMBLER

11. DO NOT USE WAX

12. DO NOT USE POLISH

13. DO NOT USE OIL

14. DO NOT USE GREASE

15. DO NOT USE ACID

16. DO NOT USE ALKALI

17. DO NOT USE SODA

18. DO NOT USE LIME

19. DO NOT USE SALT

20. DO NOT USE SUGAR

21. DO NOT USE STARCH

22. DO NOT USE GLEAMING

23. DO NOT USE TUMBLER

24. DO NOT USE WAX

25. DO NOT USE POLISH

26. DO NOT USE OIL

27. DO NOT USE GREASE

28. DO NOT USE ACID

29. DO NOT USE ALKALI

30. DO NOT USE SODA

31. DO NOT USE LIME

32. DO NOT USE SALT

33. DO NOT USE SUGAR

34. DO NOT USE STARCH

35. DO NOT USE GLEAMING

36. DO NOT USE TUMBLER

37. DO NOT USE WAX

38. DO NOT USE POLISH

39. DO NOT USE OIL

40. DO NOT USE GREASE

41. DO NOT USE ACID

42. DO NOT USE ALKALI

43. DO NOT USE SODA

44. DO NOT USE LIME

45. DO NOT USE SALT

46. DO NOT USE SUGAR

47. DO NOT USE STARCH

48. DO NOT USE GLEAMING

49. DO NOT USE TUMBLER

50. DO NOT USE WAX

51. DO NOT USE POLISH

52. DO NOT USE OIL

53. DO NOT USE GREASE

54. DO NOT USE ACID

55. DO NOT USE ALKALI

56. DO NOT USE SODA

57. DO NOT USE LIME

58. DO NOT USE SALT

59. DO NOT USE SUGAR

60. DO NOT USE STARCH

61. DO NOT USE GLEAMING

62. DO NOT USE TUMBLER

63. DO NOT USE WAX

64. DO NOT USE POLISH

65. DO NOT USE OIL

66. DO NOT USE GREASE

67. DO NOT USE ACID

68. DO NOT USE ALKALI

69. DO NOT USE SODA

70. DO NOT USE LIME

71. DO NOT USE SALT

72. DO NOT USE SUGAR

73. DO NOT USE STARCH

74. DO NOT USE GLEAMING

75. DO NOT USE TUMBLER

76. DO NOT USE WAX

77. DO NOT USE POLISH

78. DO NOT USE OIL

79. DO NOT USE GREASE

80. DO NOT USE ACID

81. DO NOT USE ALKALI

82. DO NOT USE SODA

83. DO NOT USE LIME

84. DO NOT USE SALT

85. DO NOT USE SUGAR

86. DO NOT USE STARCH

87. DO NOT USE GLEAMING

88. DO NOT USE TUMBLER

89. DO NOT USE WAX

90. DO NOT USE POLISH

91. DO NOT USE OIL

92. DO NOT USE GREASE

93. DO NOT USE ACID

94. DO NOT USE ALKALI

95. DO NOT USE SODA

96. DO NOT USE LIME

97. DO NOT USE SALT

98. DO NOT USE SUGAR

99. DO NOT USE STARCH

100. DO NOT USE GLEAMING





ROSE
SAFEERA
15004

SHANAYA
www.shanaya.com
0300-1234567
0300-1234567