

ZARQASH<sup>®</sup>  
A BRAND BY KUTIA FERRA

Z-3033-A



**--:TOP:--**

**Organza Embroidered Moti Work  
Unstitched Kameez**

**--:BOTTAM/INNER:--**

**Santoon**

**--:DUPATTA:--**

**Organza Heavy Work Embroidered**



ZARQASH<sup>®</sup>  
A BRAND BY KUTIA FERRA

Z-3033-A



**--:TOP:--**

Organza Embroidered Moti Work  
Unstitched Kameez

**--:BOTTAM/INNER:--**

Santoon

**--:DUPATTA:--**

Organza Heavy Work Embroidered



ZARQASH<sup>®</sup>  
A BRAND BY KUTAYERA

Z-3033-C



**-:TOP:-**

Organza Embroidered Moti Work  
Unstitched Kameez

**-:BOTTAM/INNER:-**

Santoon

**-:DUPATTA:-**

Organza Heavy Work Embroidered





ZARQASH

Z-3033-A

TOP  
Shouldered Multi Work  
Sleeves





**ZARQASH**  
Z-3033-C

TOP: Organza Embroidered Mat Work  
Unstitched Kameez  
-DOTTAKEMNER-  
SABOOM  
DUPATTA: Organza Embroidered Mat Work Embroidered





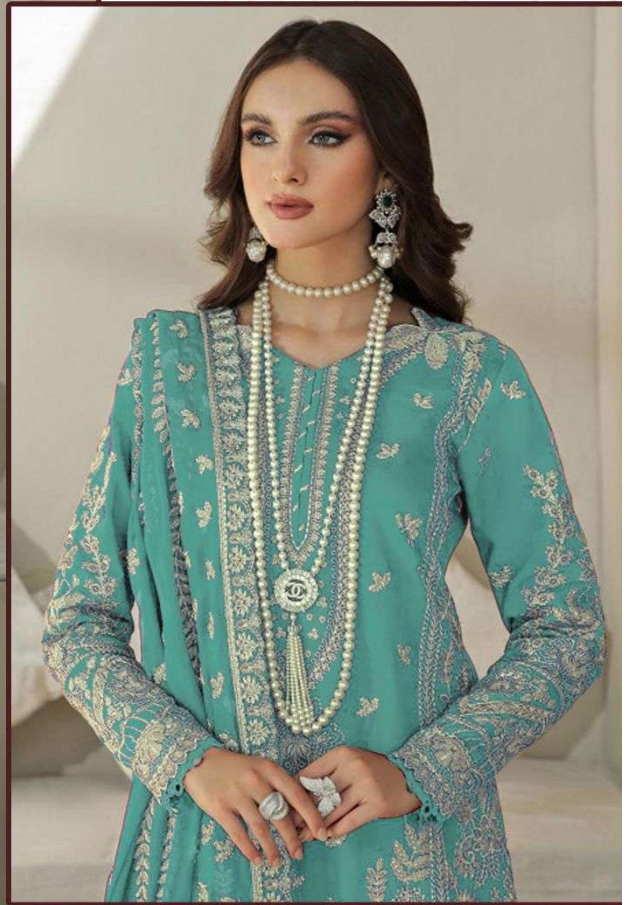
**TIKONA**  
Z-3033-B

-TOP:-  
Organza Embroidered Moti Work  
-Cuttibed Kamme:-  
-BOTTAMINNE:-  
Santoon  
-DUPATTA:-  
Organza Heavy Work Embroidered



ZARQASH<sup>®</sup>  
A BRAND BY KUTTYERA

Z-3033-E



**-:TOP:-**

**Organza Embroidered Moti Work  
Unstitched Kameez**

**-:BOTTAM/INNER:-**

**Santoon**

**-:DUPATTA:-**

**Organza Heavy Work Embroidered**





ZARQASH

Z-3033-D

TOP:-  
Organza Embroidered Matl Work  
Unstitched Kameez  
BOTTAMINNER:-  
Santoon  
DUPATTA:-  
za Heavy Work Embroidered

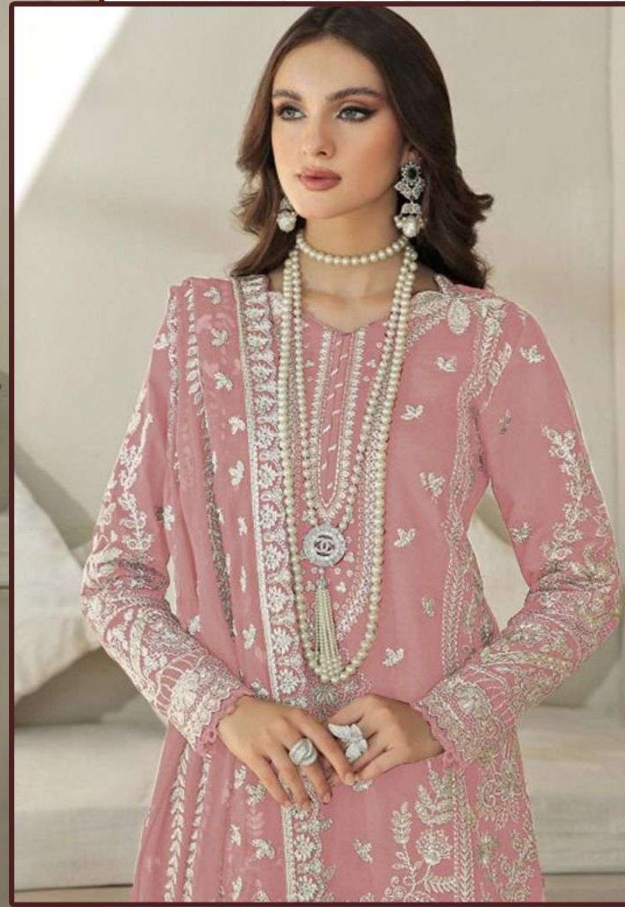






ZARQASH<sup>®</sup>  
A BRAND BY KUTIA FERRA

Z-3033-D



**-:TOP:-**

**Organza Embroidered Moti Work  
Unstitched Kameez**

**-:BOTTAM/INNER:-**

**Santoon**

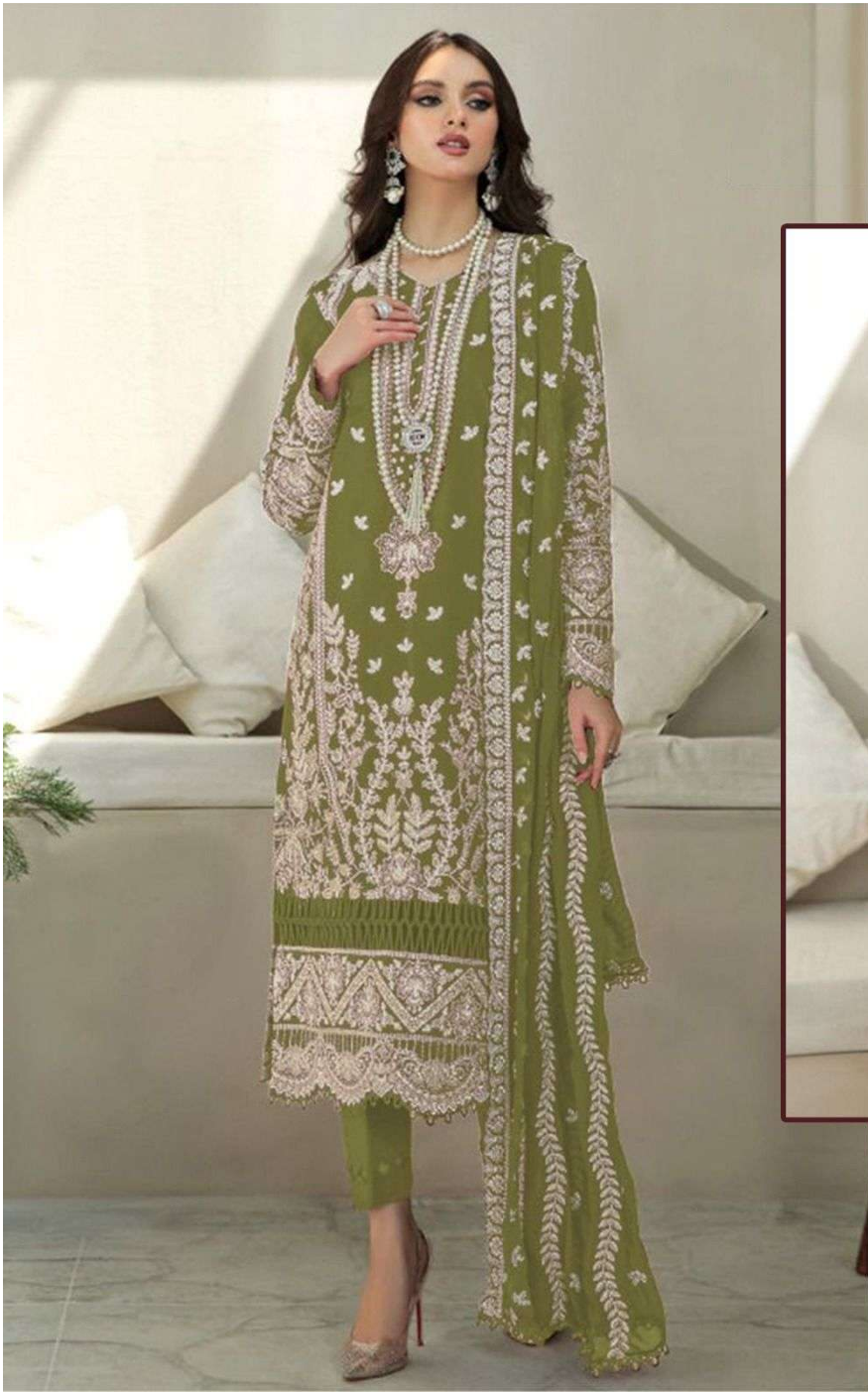
**-:DUPATTA:-**

**Organza Heavy Work Embroidered**



ZARQASH<sup>®</sup>  
A BRAND BY KUTIA FERRA

Z-3033-B



**-:TOP:-**  
Organza Embroidered Moti Work  
Unstitched Kameez  
**-:BOTTAM/INNER:-**  
Santoon  
**-:DUPATTA:-**  
Organza Heavy Work Embroidered