



MUSHQ

Luxury Lawn Collection-23

A woman with long, dark, wavy hair is shown from the waist up, wearing a black long-sleeved dress with intricate white and gold embroidery. She is also wearing a yellow shawl with a black border and a floral pattern. Her right hand is raised to her forehead, shielding her eyes from the sun. The background is a bright, sunny outdoor setting with a clear blue sky and some orange foliage on the left.

MUSHIQ

Luxury Lawn Collection-23



MUSHQ
Luxury Lawn Collection-23





MUSHQ
Luxury Lawn Collection-23



MUSHQ
Luxury Lawn Collection-23





MUSHQ

Luxury Lawn Collection-23





Shree[®]
FABRI

MUSHQ

Luxury Lawn Collection-23



MUSHQ
Luxury Lawn Collection-23





2590



2591



2594



2595



2592



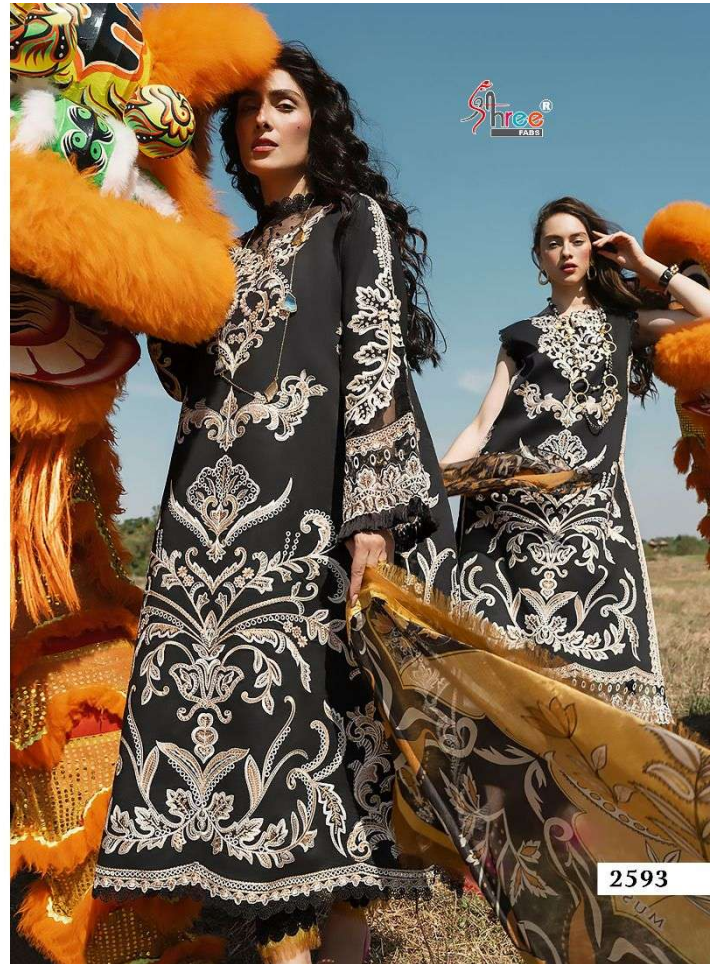
2593



MUSHQ
Luxury Lawn Collection-23



MUSHQ
Luxury Lawn Collection-23



2593



MUSHQ
Luxury Lawn Collection-23



MUSHQ

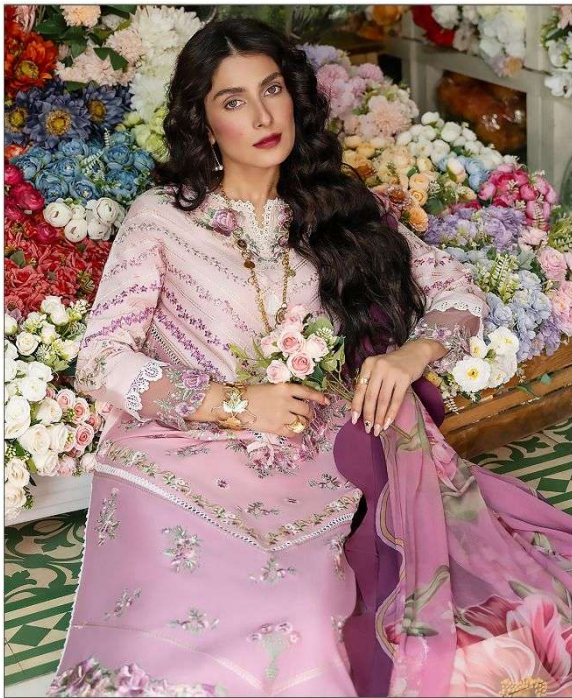
Luxury Lawn Collection-23





MUSHQ
Luxury Lawn Collection-23





MUSHQ
Luxury Lawn Collection-23





MUSHQ
Luxury Lawn Collection-23





MUSHQ
Luxury Lawn Collection-23

