

ALEENA

VOL-1

आाawiya®





Aaawiya®

BE

YOUR OWN LABEL
PRINTED, MANUFACTURED, DESIGNED, AND PACKED BY
A.A. AWAIYA & CO. PVT. LTD. 2113





Aaawiya®



YOU

SHOULD ALWAYS FEEL PRETTY

2114

आाawiya®



2111



2112



2113



2114



2115

ALEENA
VOL-1

आाawiya®

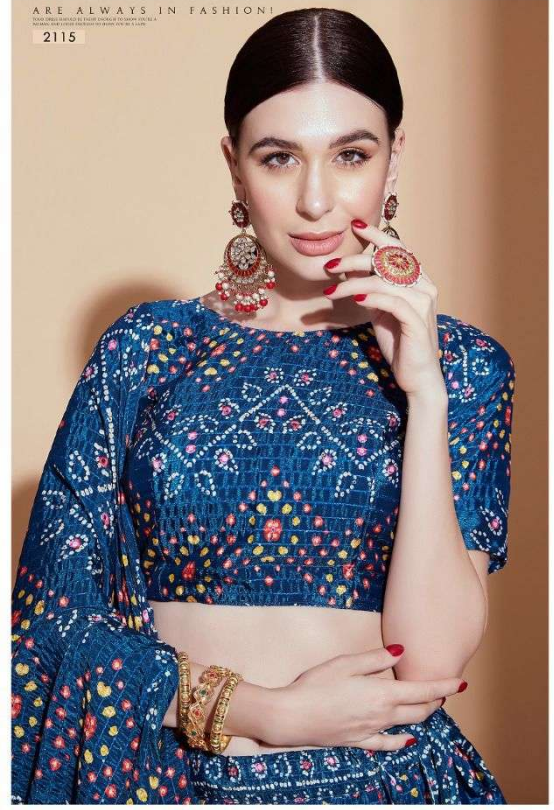
आaawiyā®



SMILES

ARE ALWAYS IN FASHION!

2115





WEIGHT - 1.5 KG

SKU	MAIN COLOR	LEHENGA FABRIC	BLOUSE FABRIC	DUPATTA FABRIC	DESCRIPTION
2111	PARPAL	CHINON CROCHET	CHINON CROCHET	CHINON CROCHET	DIGITAL PRINT & CORCHET WORK
2112	PEACH	CHINON CROCHET	CHINON CROCHET	CHINON CROCHET	DIGITAL PRINT & CORCHET WORK
2113	BLUE	CHINON CROCHET	CHINON CROCHET	CHINON CROCHET	DIGITAL PRINT & CORCHET WORK
2114	BLUE	CHINON CROCHET	CHINON CROCHET	CHINON CROCHET	DIGITAL PRINT & CORCHET WORK
2115	BLUE	CHINON CROCHET	CHINON CROCHET	CHINON CROCHET	DIGITAL PRINT & CORCHET WORK

- 1) LEHENGA & BLOUSE WORK:- DIGITAL PRINT & CORCHET
- 2) DUPATAA WORK:- DIGITAL PRINT & CORCHET WITH TASSELS
- 3) LEHENGA SEMI-STICH WITH ART SILK INNER & CAN-CAN WITH CANVAS
- 4) LEHENGA LENGTH 42" & WAIST 44"
- 5) LEHENGA FLAIR - 4 MTR & BLOUSE 1. MTR & DUPATTA LENGTH 2.3 MTR

आaawiya®

YOU

SHOULD ALWAYS
FEEL PRETTY
2114



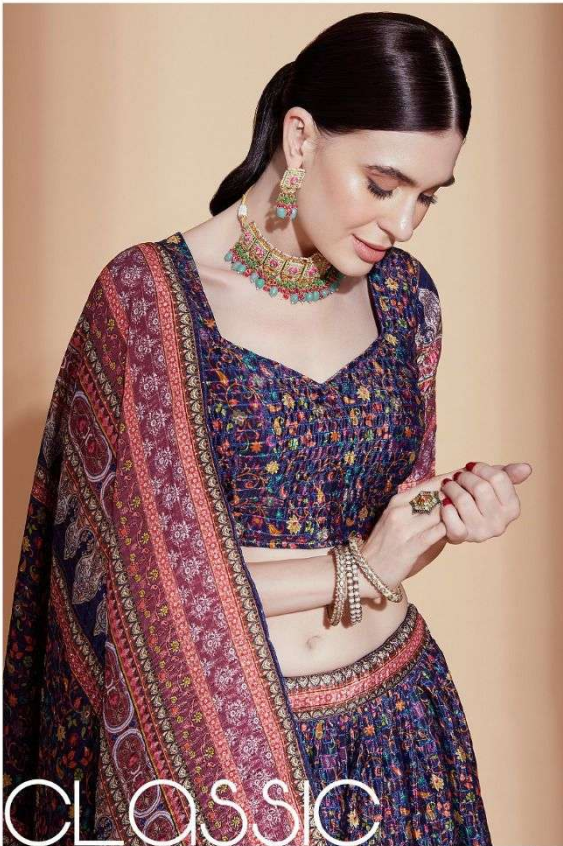


SMILES

ARE ALWAYS IN FASHION!

2115

आaawiya®



CLASSIC

NEVER GOES OUT OF STYLE

2111



ALEENA

VOL-1

आाawiya®





GO

FORTH & BE FABULOUS!

DESIGNED BY: ANITA DOLY. MANUFACTURED BY: ANITA DOLY. 100% COTTON. 100% HANDMADE. 100% EXPORT QUALITY. 100% ORIGINAL. 100% FABULOUS.

2112



Aaawiya®

Aaawiya®



BE

YOUR OWN LABEL

2113



GO

FORTH & BE FABULOUS!

2112

Aaawiyaa®





आाawiya®



CLASSIC

NEVER GOES OUT OF STYLE

2111