

A woman with long dark hair, wearing a bright yellow sari with intricate gold embroidery, stands in a three-quarter view. She is positioned in front of a white, classical-style building with arched windows. A black street lamp stands to her left. The scene is brightly lit, suggesting daytime.

 Sadhana
EST. 1971

Noor E Mohabbat



 Sadhana





9011



9012



9013



9016



9017



9018



9014



9015



9019



9020



9017



Sadhana







Sadhana
9012







 Sadhana











 Sadhana



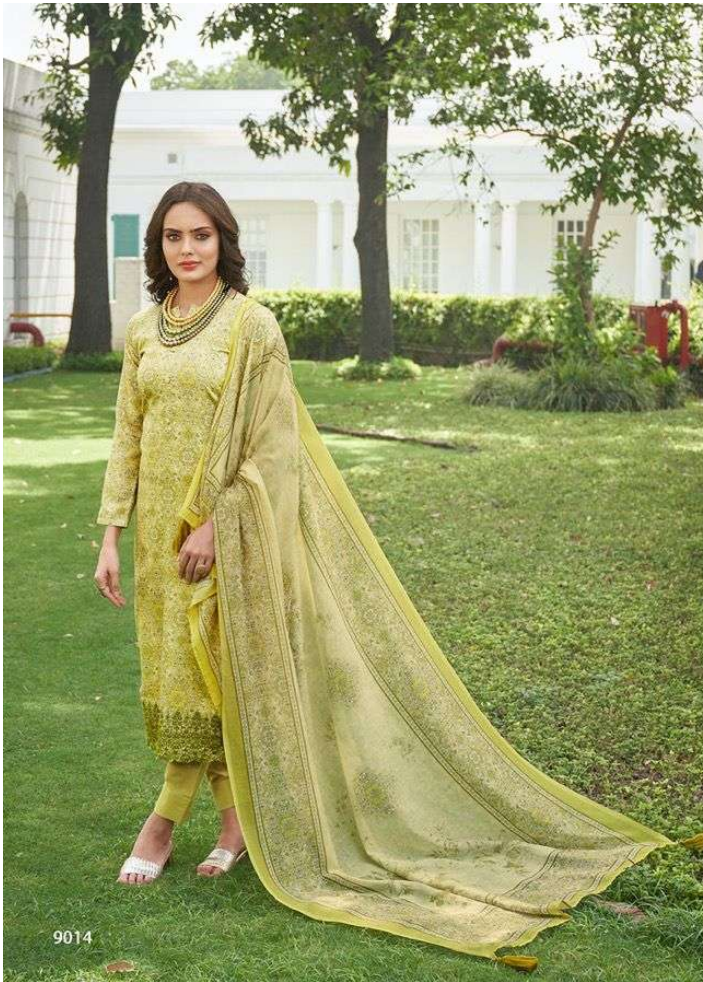
 Sadhana
DESIGNERS



 Sadhana









Sadhana



 Sadhana



Sadhana



Sadhana
9016

