

# YAVANIKA

MOHMANTHAN™  
*Elite*



MAHOTSAV®  
GROUP





*Stunning Rosewood Maroon*

When roses were to be changed, this rosewood maroon came to rescue so beautifully that even the scent of yours, created those blooming dales.



22911

Fabric : Satin Crepe Silk  
with Embroidery, Digital  
Sequence Work.  
[www.sarees.com](http://www.sarees.com)



*Stunning  
Rosewood Maroon*

This Maroon brings you the Embroidery work, carved in crepe silk, so fine that it blooms with the mixed seasoned style to cast a spell on those who look at you.

*Hexagonal Tapestry  
change mood in all directions.*

Set the analogy with this designer tapestry which brings along the taste of setting your fashion tone to the right pick.



22912

Fabric : Satin Crepe Silk  
with Embroidery, Digital  
Sequence Work.  
Only Front Side



22913

Fabric : Satin Crepe Silk  
with Embroidery, Digital  
Sequence Work.  
[www.pinkcity.com](http://www.pinkcity.com)



*Dark ocean blue*  
*Create a marine species now.*  
Like the Blue Ocean reminds us of one thing that this ocean is not only vast but beautiful too. Likewise, this marine ocean blue collection too.



**MAHOTSAV GROUP PRESENTS**  
**MOHMANZHAN-Elite**  
**"YAVANIKA"**

DESIGN NO.	DESCRIPTION	PRICE
22905	DESIGNER SAREE	3535
22906	DESIGNER SAREE	3155
22907	DESIGNER SAREE	3155
22908	DESIGNER SAREE	2915
22909	DESIGNER SAREE	2345
22910	DESIGNER SAREE	3155
22911	DESIGNER SAREE	3425
22912	DESIGNER SAREE	3435
22913	DESIGNER SAREE	3075

NOTE : GST@5% WILL BE CHARGED ON THE ABOVE PRICES.

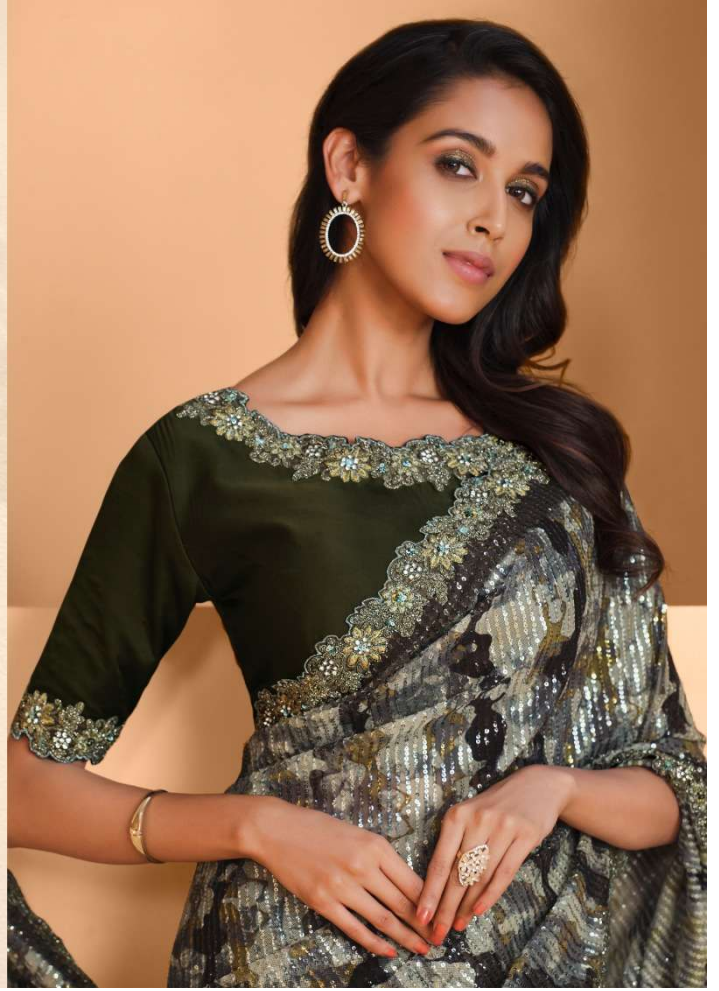
DESIGN NO	SAREE FABRIC	BLOUSE FABRIC	Saree WORK	Blouse Work	CUSTZ.(SEMISTITCH/UN-STITCH)	BLOUSE LENGTH
22905	Satin Crepe Silk	Silk Taffeta	Embroidery with Digital Sequence Work	Sequence Embroidered	Unstitched Blouse	0.8
22906	Satin Crepe Silk	Raw Silk	Embroidery with Digital Sequence Work	Sequence Embroidered	Unstitched Blouse	0.8
22907	Satin Crepe Silk	Silk Taffeta	Embroidery with Digital Sequence Work	Sequence Embroidered	Unstitched Blouse	0.8
22908	Satin Crepe Silk	Brocade	Embroidery with Digital Sequence Work	Sequence Embroidered	Unstitched Blouse	0.8
22909	Satin Crepe Silk	Brocade	Embroidery with Digital Sequence Work	Sequence Embroidered	Unstitched Blouse	0.8
22910	Satin Crepe Silk	Silk Taffeta	Embroidery with Digital Sequence Work	Sequence Embroidered	Unstitched Blouse	0.8
22911	Satin Crepe Silk	Taffeta Silk	Embroidery with Digital Sequence Work	Sequence Embroidered	Unstitched Blouse	0.8
22912	Satin Crepe Silk	Taffeta Silk	Embroidery with Digital Sequence Work	Sequence Embroidered	Unstitched Blouse	0.8
22913	Satin Crepe Silk	Raw Silk	Embroidery with Digital Sequence Work	Sequence Embroidered	Unstitched Blouse	0.8



# MOHMANTHAN™ *Elite*

## A Tapestry Across All Cones

From the latest trends on the runway to the hottest street styles, we bring you the most exciting and inspiring collections in this catalog named YAVANIKA, which true to its meaning, wrapping many things within like a curtain. We believe that fashion is a form of self-expression, and that every person has their own unique style that deserves to be celebrated. Join us, in this journey as we bring along some new designs to suit your taste, and discover new ways to express yourself through clothing, accessories, and beauty. Let's dive in!



# YAVANIKA

MOHMANTHAN™  
*Elite*



MAHOTSAV®  
GROUP





22905



22906



22907



22911



22912



22913



22908



22909



22910

MOHMANTHAN™  
*Elite*  
YAVANIKA



*Frolic  
Splashing Green*

It is not about dressing according to what's fashionable. You just proved that style is more about being yourself.



22905

Fabric: Satin Crepe Silk  
with Embroidery, Digital  
Sequence Work.

[www.ayazkhan.com](http://www.ayazkhan.com)

*Breaking Toledo Java Plum*

So beautiful, yet so calm. . . this remind me of one thing that  
Fashion should be a form of escapism, and not a form of imprisonment.



22906

Fabric : Satin Crepe Silk  
with Embroidery, Digital  
Sequence Work.  
[www.lovell.com](http://www.lovell.com)



*Curtain Drip Oxford Green*

You made me to think right. Fashion is not necessarily about labels.  
It's not about brands. It's about something else that comes from within you.



22907

Fabric : Satin Crepe Silk  
with Embroidery, Digital  
Sequance Work.  
© 2023 | www.oxfordgreen.com



*Shine with the Black*

Why do we have to look somewhere else  
when I just found that a beautiful glow is about  
something that comes from within you.



22909

Fabric: Satin Crepe Silk  
with Embroidery, Digital  
Sequince Work.

www.pinkcity.com





*The  
Purple Menace*

Your movements, wrapped in this purple  
cuts not only let my Ego dropped but broke  
its architecture all in one. Looking alone at  
this beauty is just not enough.



22908

Fabric : Satin Crepe Silk  
with Embroidery, Digital  
Sequence Work.

*Falling Navy Blue*

This style of blue not only makes you armoured to say who you are without having to speak, but derive the new benchmark for getting noticed.



22910

Fabric : Satin Crepe Silk  
with Embroidery, Digital  
Sequince Work.

[www.ajaykumar.com](http://www.ajaykumar.com)



*Falling Navy Blue*

Shall I put this? Or shall I put that? You put a full stop to all these kind of questions, when this color of Navy blue falls on you. A classic work of Embroidery in satin. Crepe silk in digital sequence is just the right fit for you.

