



sheeshmahal®





S
sheeshmahal®

TOP- GEORGETTE
BOTTOM/INER - SANTOON
DUPATTA - NET



#S-1320 A

#S-1320 B

#S-1320 C

#S-1320 D

#S-1320 E

#S-1320 F

#S-1320 G



S
sheeshmahal®



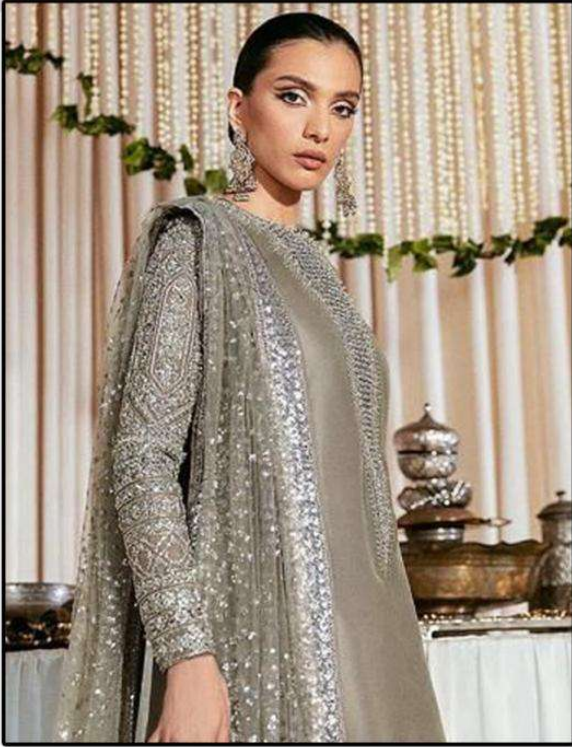
#S-1320-B

Top- GEORGETTE
Bottom/Iner- SANTOON
Dupatta- NAZMEEN

WASHING INSTRUCTIONS
DO NOT USE ANY TYPE OF BLEACH OR OTHER BLEACHING AGENTS
BEFORE DYEING OR COLORING SHOULD BE DONE IN WATER
ALL COMPONENTS WASHED FOR 15 MINUTES
DO NOT DRY IN DIRECT SUNLIGHT TO AVOID COLOR LOSS
DO NOT IRON. IF TINTED IRON IN ORDER TO AVOID COLOR LOSS
HIGH COLORED AND WHITE FABRICS SEPARATELY
IRON CLOTHES AT MODERATE TEMPERATURE DO NOT DRY FABRIC IN DIRECT SUNLIGHT
EXTRA LACES, HANGINGS AND ACCESSORIES ARE NOT INCLUDED



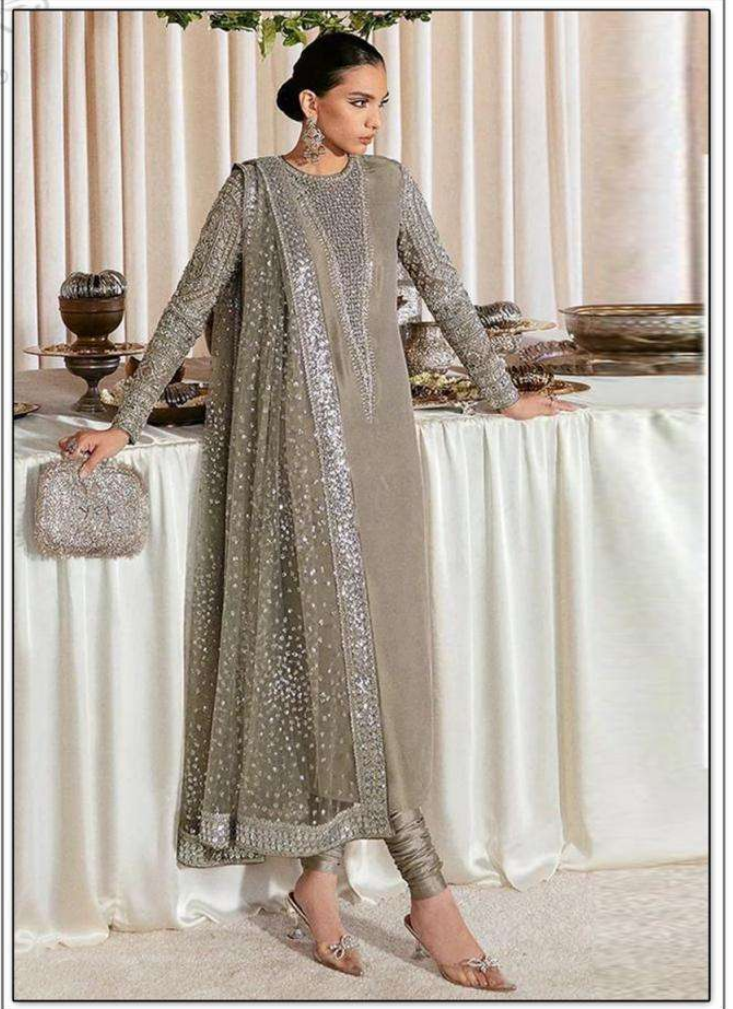
S
sheeshmahal®



#S-1320-A

Top- GEORGETTE
Bottom/Iner- SANTOON
Dupatta- NAZMEEN

WASHING INSTRUCTIONS
DO NOT USE ANY TYPE OF BLEACH OR OTHER BLEACHING AGENTS
BEFORE DRYING OR WASHING SHOULD BE COMPLETED IN WATER
ALL COMPONENTS WASHED FOR 15 MINUTES
DO NOT USE HOT WATER. IN TRIMMED ITEM IN ORDER TO AVOID TOP WASH
HIGH COLOURED AND WHITE FABRICS SEPARATELY
IRON CLOTHES AT MODERATE TEMPERATURE DO NOT DRY FABRIC IN DIRECT SUNLIGHT
EXTRA LACES, HANGINGS AND ACCESSORIES ARE NOT INCLUDED



S
sheeshmahal®



#S-1320-D

Top- GEORGETTE
Bottom/Iner- SANTOON
Dupatta- NAZMEEN

WASHING INSTRUCTIONS
DO NOT USE ANY TYPE OF BLEACH OR OTHER BLEACHING AGENTS
BEFORE DYEING COLOURS SHOULD BE SOAKED IN WATER
ALL COMPONENTS SEPARATELY FOR 15 MINUTES
DO NOT KEEP ANY FABRIC IN CONTACT WITH DIRECT SUNLIGHT
HIGH COLOURED AND WHITE FABRICS SEPARATELY
IRON CLOTHES AT MODERATE TEMPERATURE DO NOT DRY FABRIC IN DIRECT SUNLIGHT
(EXTRA LACES/HANDKERCHIEFS AND ACCESSORIES ARE NOT INCLUDED)



S
sheeshmahal®



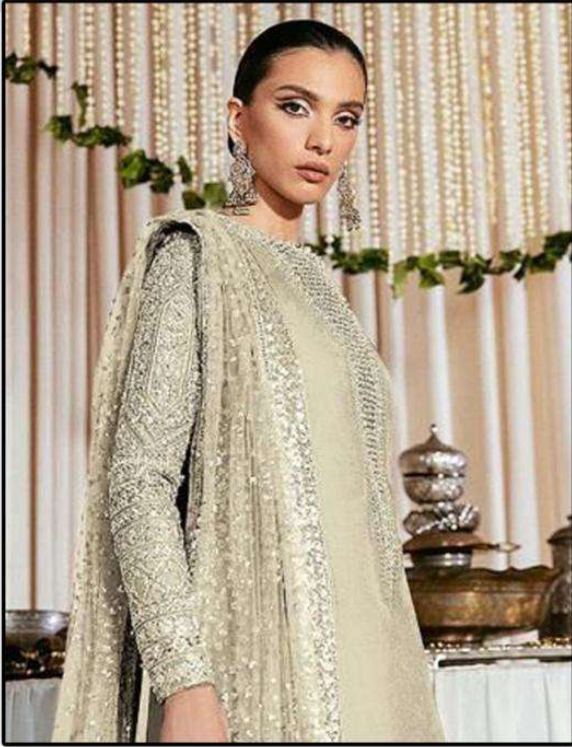
#S-1320-C

Top- GEORGETTE
Bottom/Iner- SANTOON
Dupatta- NAZMEEN

WASHING INSTRUCTIONS
DO NOT USE ANY TYPE OF BLEACH OR STAIN REMOVING CHEMICALS
BEFORE DRYING. COLOURS MAY BLEED. SHOULD BE WASHED IN WATER.
ALL COMPONENTS WASHED FOR 15 MINUTES.
DO NOT KEEP WET FABRIC IN TRAY FOR MORE THAN 24 HOURS TO AVOID COUP MARKS.
HIGH COLOURED AND WHITE FABRIC DRY CARE.
IRON CLOTHES AT MEDIUM TEMPERATURE. DO NOT DRY FABRIC IN DIRECT SUNLIGHT.
(EXTRA LACES, HANGINGS AND ACCESSORIES ARE NOT INCLUDED)



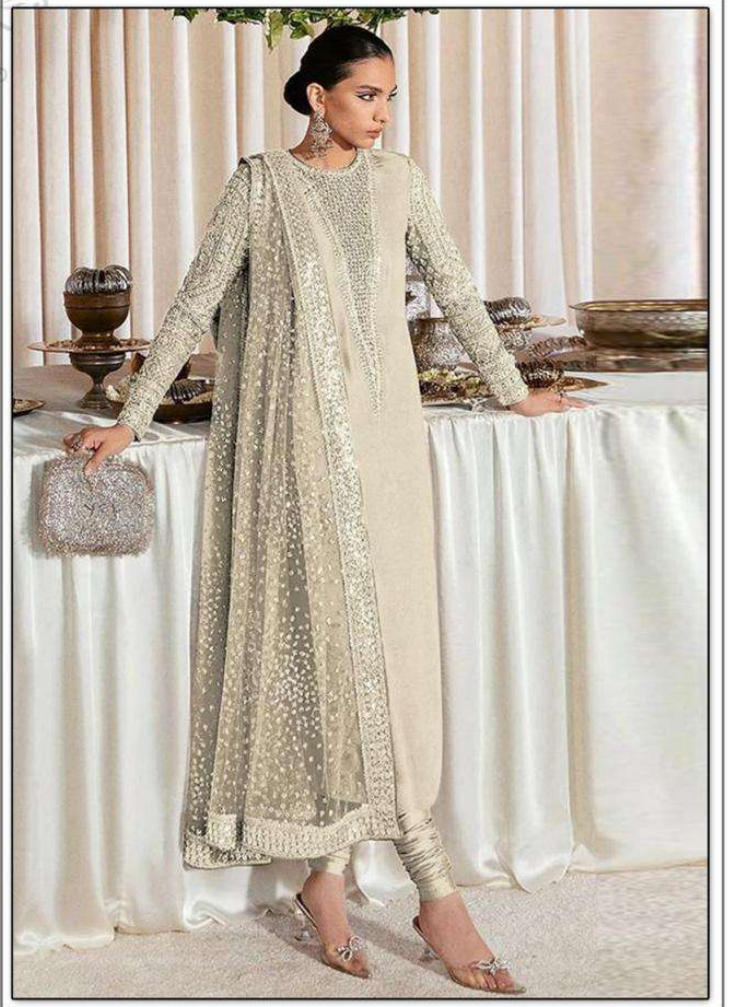
S
sheeshmahal®



#S-1320-F

Top- GEORGETTE
Bottom/Iner- SANTOON
Dupatta- NAZMEEN

WASHING INSTRUCTIONS
DO NOT USE ANY TYPE OF BLEACH OR CHLORINE BLEACHES
BEFORE DYEING COLORING FABRIC SHOULD BE SOAKED IN WATER
ALL COMPONENTS WASHED FOR 15 MINUTES
DO NOT KEEP ANY FABRIC IN CONTACT WITH IRON OBJECTS TO AVOID COP MARKS
HIGH COLORED AND WHITE FABRICS SEPARATELY
IRON CLOTHES AT MODERATE TEMPERATURE DO NOT DRY FABRIC IN DIRECT SUNLIGHT
(EXTRA LACES/HANDKERCHIEFS AND ACCESSORIES ARE NOT INCLUDED)



S
sheeshmahal®



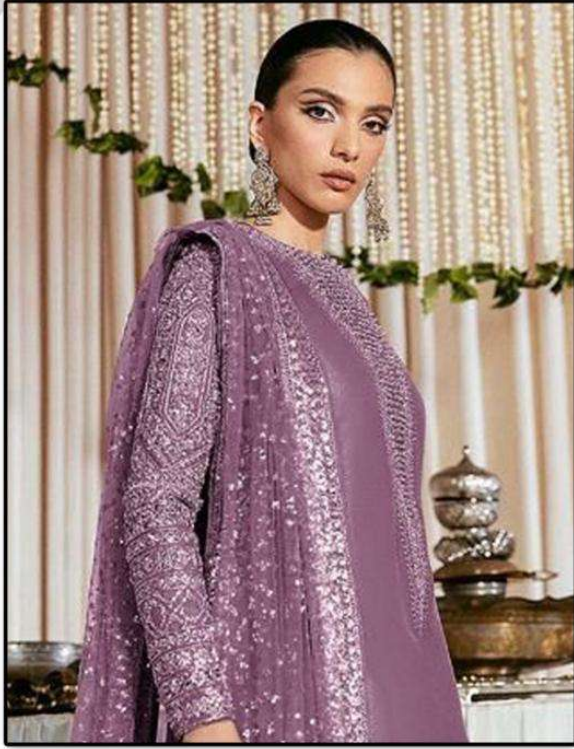
#S-1320-G

Top- GEORGETTE
Bottom/Iner- SANTOON
Dupatta- NAZMEEN

WASHING INSTRUCTIONS
DO NOT USE ANY TYPE OF BLEACH OR STAIN REMOVING CHEMICALS
BEFORE DRYING. COLORED FABRICS SHOULD BE SOAKED IN WATER
ALL COMPONENTS SEPARATELY FOR 15 MINUTES
DO NOT USE HOT WATER. IN TRIMMED ITEM IN ORDER TO AVOID COP MARKS
HIGH COLORED AND WHITE FABRICS SEPARATELY
IRON CLOTHES AT MODERATE TEMPERATURE DO NOT DRY FABRIC IN DIRECT SUNLIGHT
(EXTRA LACES/HANDKERCHIEFS AND ACCESSORIES ARE NOT INCLUDED)



S
sheeshmahal®



#S-1320-E

Top- GEORGETTE
Bottom/Iner- SANTOON
Dupatta- NAZMEEN

WASHING INSTRUCTIONS
DO NOT USE ANY TYPE OF BLEACH OR OTHER BLEACHING AGENTS
BEFORE DYEING OR COLORING SHOULD BE DONE IN WATER
ALL COMPONENTS WASHED FOR 15 MINUTES
DO NOT KEEP IN HOT DRYER. IN TIGHTLY SEWN INSECT TO AVOID TOP WASH
HIGH COLORED AND WHITE FABRIC SEPARATELY
IRON CLOTHES AT MODERATE TEMPERATURE DO NOT DRY FABRIC IN DIRECT SUNLIGHT
(EXTRA LACES/HANDKERCHIEFS AND ACCESSORIES ARE NOT INCLUDED)

