

A woman with long, dark, wavy hair is the central figure, looking slightly to her right. She is wearing a vibrant green dress with long sleeves and a matching shawl or dupatta with a pattern of orange, purple, and white. Her accessories include large, ornate gold earrings with turquoise stones and a matching ring. The background is a natural setting with a river and rocks, blurred to emphasize the subject.

Uang
FASHION

Summer shu



REDEFINING GLAMOUR

D.NO.
1001



REVAMP YOUR WARDROBE
WITH A DASH OF GOLDEN
SPARK AND MATCHLESS
DESIGNS
THIS SEASON





T R A D I T I O N A L

G I R L





D.NO. 1002 DREAMY DRAPES





Stylish elegance
EFFORTLESS SIMPLICITY OF BEAUTY



T I M E L E S S M A S T E R P I E C E

D.NO.
1003





NATURAL BEAUTY

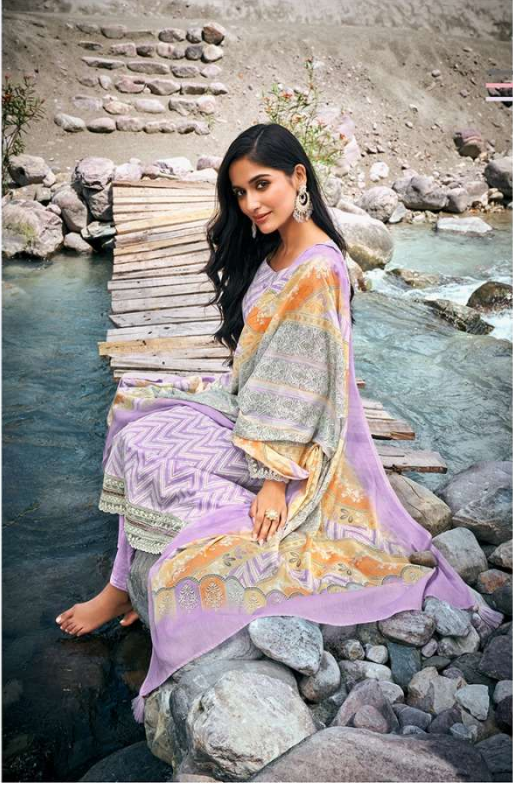
D.NO.
1005





D.NO.
1004

C E L E B R A T E M O M E N T S



TRADITIONAL SAGA

D.NO.
1008

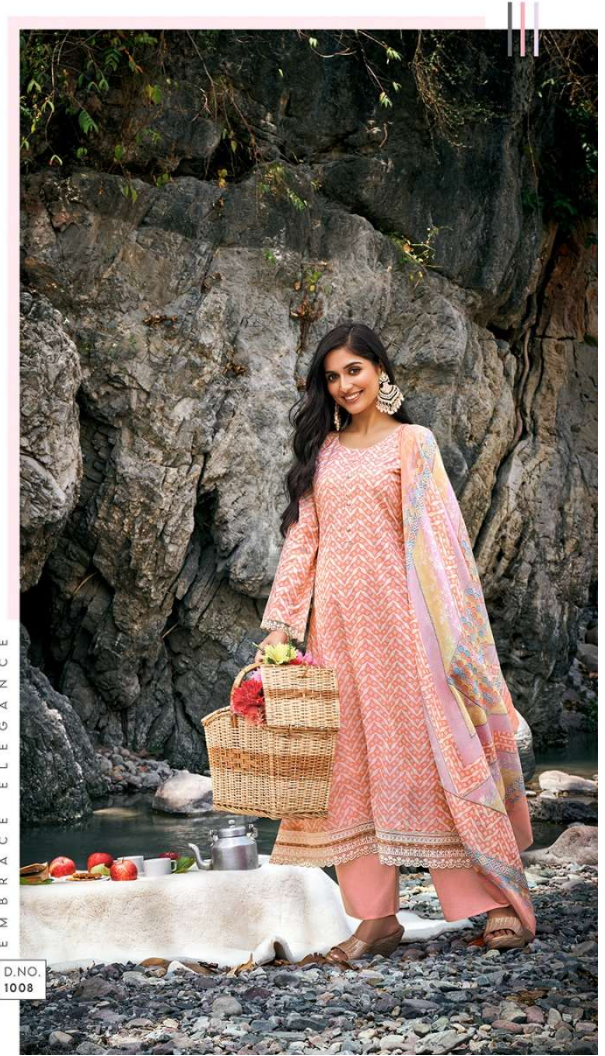




GRACE AND GRANDEUR

D.NO.
1006





EMBRACE ELEGANCE

D.NO.
1008





Summer sky

