

  
*Ramsha*<sup>®</sup>  
1035-NX





**READYMAD**  
**#R-1035-A**



**TOP**- GEORGET WITH EMBROIDERY  
**BOTTOM**- SILK STICHED  
**DUPATTA** - ORGENZA EMBROIDERY

- Ⓟ DRY CLEAN ONLY.
- ⓧ DO NOT USE ANY BLEACH OR STAIN REMOVING CHEMICAL.
- ☎ IRON THE FABRIC AT MODERATE TEMPERATURE.

Ramsha®  
1035-NX



#R-1035-A



#R-1035-B



#R-1035-C

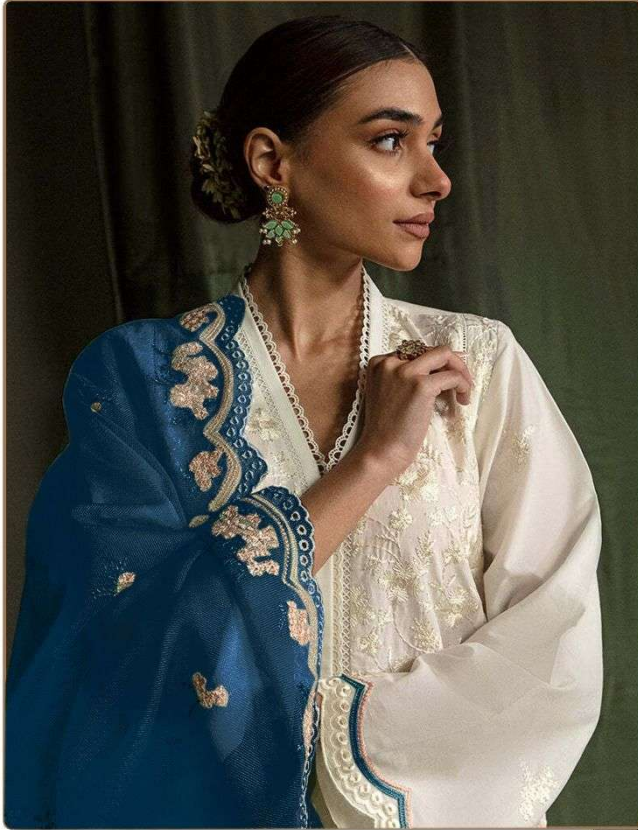


#R-1035-D

Ramsha®  
1035-NX



**READYMAD**  
**#R-1035-B**



**TOP**- GEORGET WITH EMBROIDERY  
**BOTTOM**- SILK STICHED  
**DUPATTA** - ORGENZA EMBROIDERY

- Ⓟ DRY CLEAN ONLY.
- ⊗ DO NOT USE ANY BLEACH OR STAIN REMOVING CHEMICAL.
- ☎ IRON THE FABRIC AT MODERATE TEMPERATURE.

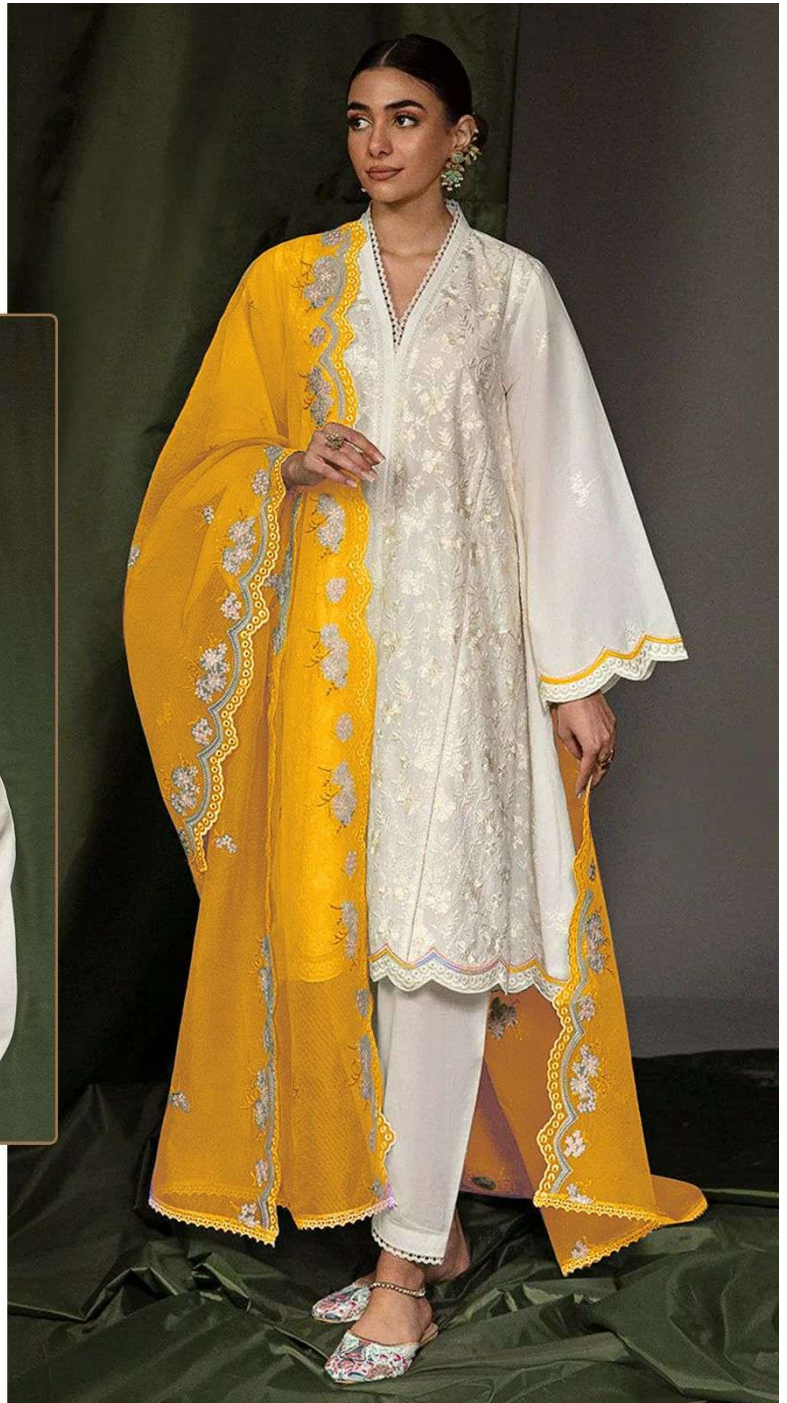


**READYMAD**  
**#R-1035-C**



**TOP**- GEORGET WITH EMBROIDERY  
**BOTTOM**- SILK STICHED  
**DUPATTA** - ORGENZA EMBROIDERY

- Ⓟ DRY CLEAN ONLY.
- ✘ DO NOT USE ANY BLEACH OR STAIN REMOVING CHEMICAL.
- ☎ IRON THE FABRIC AT MODERATE TEMPERATURE.





**READYMAD**  
**#R-1035-D**



**TOP**- GEORGET WITH EMBROIDERY  
**BOTTOM**- SILK STICHED  
**DUPATTA** - ORGENZA EMBROIDERY

- Ⓟ DRY CLEAN ONLY.
- ⊗ DO NOT USE ANY BLEACH OR STAIN REMOVING CHEMICAL.
- ☎ IRON THE FABRIC AT MODERATE TEMPERATURE.